

University of Fort Hare
Together in Excellence

HUS - 122

Supplementary Examination

November 2018

TIME: 3 HRS

SUBJECT: HUMAN MOVEMENT SCIENCE

MARKS: 100

PAPER: Introduction to Human Physiology

EXAMINER

MR. LK. Ndaba

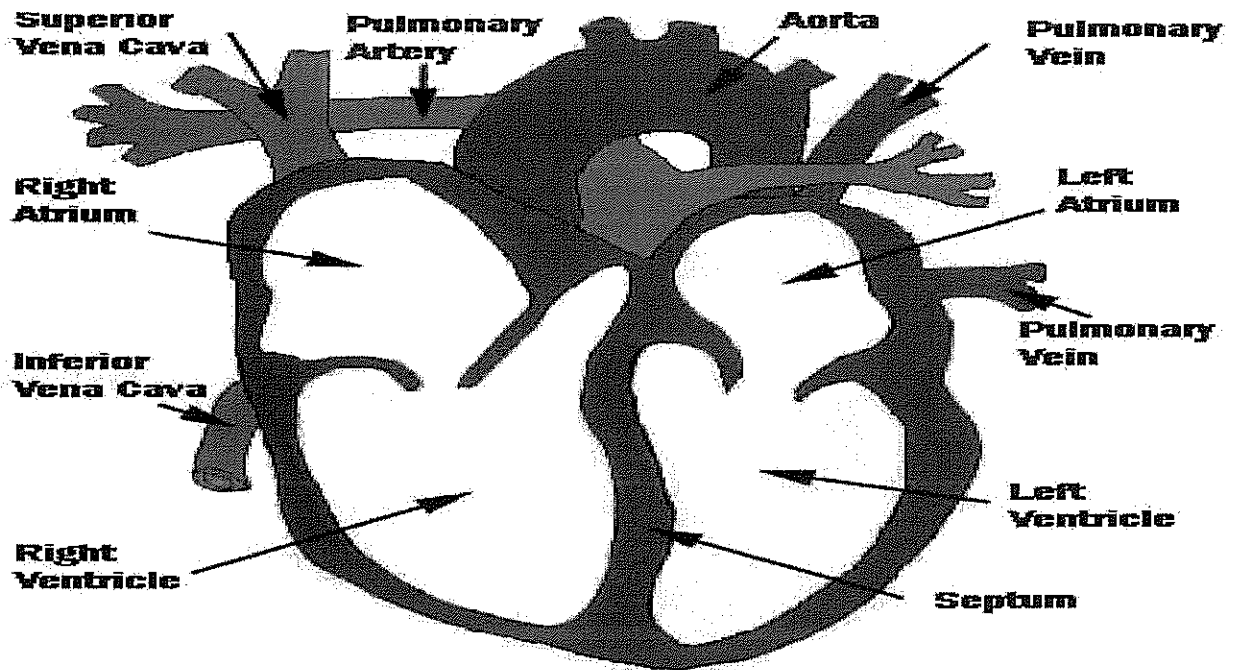
INSTRUCTIONS:

Answer All Questions

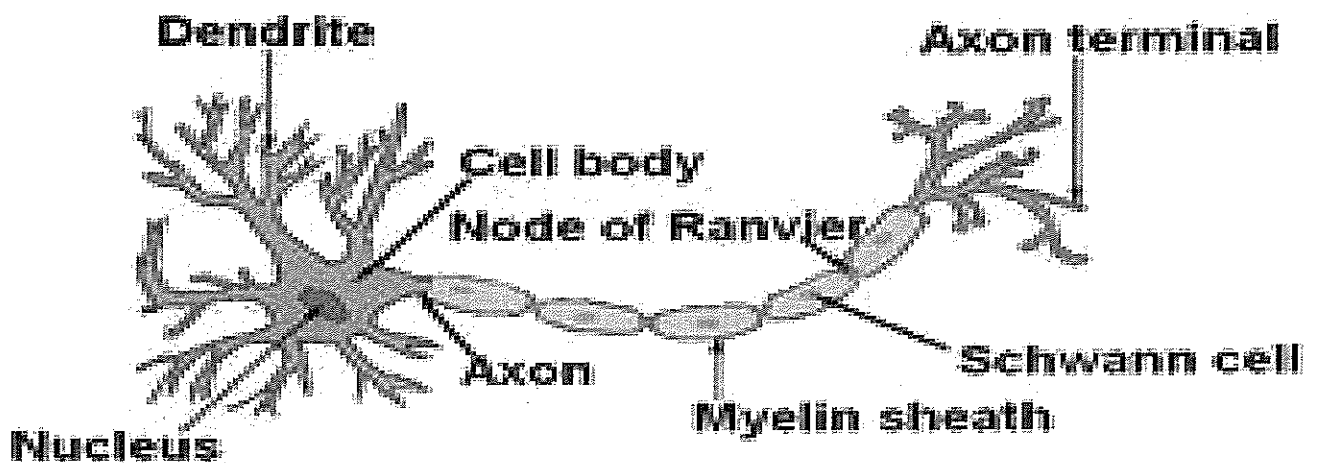
Question 1

Explain the role played by 20 of the following labelled structures on both diagrams

[20 marks]



Structure of a Typical Neuron



Question 2

Briefly explain blood circulatory system following only the oxygenated blood between the heart and the lungs

[10 Marks]

Questions 3

Discuss the functions of the tissue.

[4X5=20marks]

Question 4

Discuss in detail the changes that take place in partial pressure of gasses in different areas of circulatory system as the gaseous exchange take place in lungs and the tissue in human body.

[20 marks]

Question 5

Using a diagram follow the sequence of the heart conduction leading to it rhythmic contraction.

[10 marks]

Question 6

Explain respiratory system following the movement of oxygen from the atmosphere leading gaseous exchange in the alveolus and movement of carbon dioxide movement from alveolus to the atmosphere.

[10 marks]

Question 7

Discuss the events that take place in the heart as it continuously function to pump blood to the working muscles using the wigger's diagram.

[10 marks]

Total

[100 Marks

_____END_____