

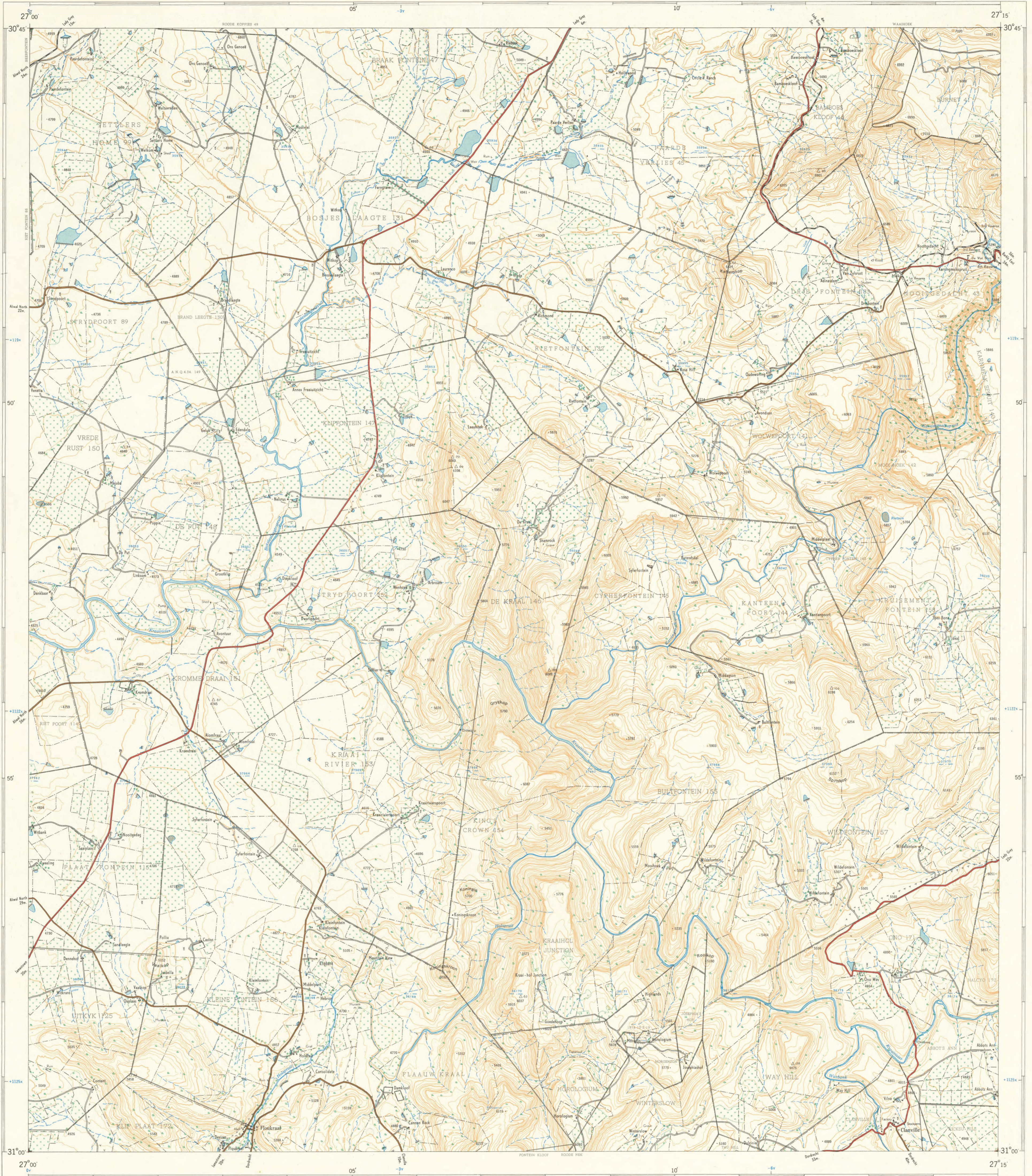


University of Fort Hare Together in Excellence

1:50,000 SOUTH AFRICA
SUID-AFRIKA

3027CC FLOUKRAAL

Refer to this Map as SOUTH AFRICA 1:50,000 Sheet 3027CC FLOUKRAAL
Verwys na hierdie Kaart as SUID-AFRIKA 1:50,000 Vel 3027CC FLOUKRAAL
FIRST EDITION EERSTE UITGAWE



Cumulative magnetic declination 27° 3' West of True North (1984 G). Cumulative peak rate maximum 4' Westward (1921-1981)
Mean magnetic declination 27° 3' West of True North (1984 G). Mean annual change 4' Westward (1921-1981)



Air Photography 1952. Surveyed in 1963 and drawn in 1964 by the Trigonometrical Survey Office.
Lugfoto's 1952. Opgeneem in 1963 en geteken in 1964 deur die Diehoekmetingskantoor.

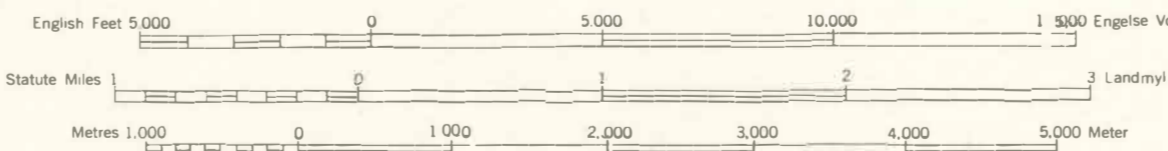
T.S.O. 200/2120

Contour Interval 50 English Feet

1:50,000

Kontour Tussenruimte 50 Engelse Voet

Printed and Published in the Republic of South Africa by the Government Printer, Pretoria, 1964.
Gedruk en uitgegee in die Republiek van Suid-Afrika deur die Staatsdrukker, Pretoria, 1964.

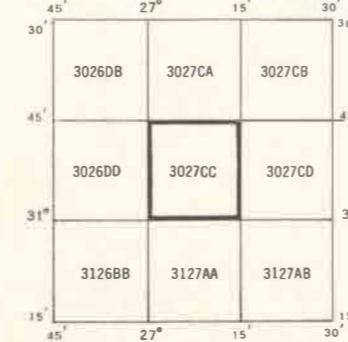


The grid lines of the South African Co-ordinate System are indicated in the margin by short black lines at 30,000 English Feet intervals, with co-ordinate values in units of 10,000 English Feet in blue.

All heights are given in English Feet to ground level.
Alle hoogtes word in Engelse Voet tot op grondhoogte aangegee.
Gauss Conform Projection. Central Meridian 27° East.
Gauss se Konforme Projekie. Midreedsmeridian 27° Oos.

Die ruitlyn van die Suid-Afrikaanse Koördinaatsisteem word in die kante van die kaart deur kort swart lyne, 30,000 Engelse Voet van mekaar, met koördinaatwaardes in eenhede van 10,000 Engelse Voet in blou.

INDEX TO SHEETS INDEKS VAN VELLE



PRICE PER SHEET 60c PRYS PER VEL
COPYRIGHT KOPIEREG

Cadastral information supplied by the Surveyor-General, Cape.
Oorspronklike Reëse.

REFERENCE	VERKLARING
International Boundaries	Internasionale Grense
Provincial Boundaries	Provinsiale Grense
Multiple Track Railways	Veelvoelige Spoorlyne
Single Track Railways	Eensvoelige Spoorlyne
Electrified Railways	Geelektifiseerde Spoorlyne
Narrow Gauge Railways	Smalspoorlyne
Service Railways	Diensspoorlyne
National Roads	Nasionale Paaie
Main Roads	Hoofpaaie
Secondary Roads	Sekondêre Paaie
Other Roads	Ander Paaie
Tracks and Footpaths	Dowwe Paaie en Voetpaaie
Power Lines	Kraglyne
Telephone and Telegraph Lines	Telefoon- en Telegraaflyne
Post and Telegraph Offices, Police Stations and Posts, Stores, Hotels, Schools and Places of Worship	Pos- en Telegraafkantore, Polisie-stasies en poste, Winkels, Hotelle, Skole en Plekke van Aanbidding
Lighthouses and Marine Lights	Vuurtorings en Seewaartligte
Marine Beacons	Seewaartbakens
Trig. Beacons (Number to right and height below)	Diehoekbakens (nommer regs en hoogte onder)

REFERENCE	VERKLARING
Magnetic Stations and Ground Signs	Magnetiese Stasies en Grondtekens
Huts	Hutte
Monuments	Monumente
Dipping Tanks	Dipbakke
Windmills	Windmolle
Walls	Mure
Anti-erosion Walls	Grondbewaringswalle
Excavations	Uitgrawings
Perennial Water	Staanthoudende Water
Non-perennial Water	Nie-staanthoudende Water
Dry Pans	Droë Panne
Fountains, Springs, Waterholes and Wells	Fonteinne, Watergate en Putte
Marshes, Swamps and Vleis	Moerasse en Vieis
Pipelines	Pylyne
Photo Centres	Fotometriepunte
Prominent Rock Outcrops	Uitstaande Klibbanke
Terraces	Terrasse
Cultivated Lands	Bewerkte Lande
Orchards and Vineyards	Boorde en Wingerde
Trees and Bush	Bome en Bos

3027CC FLOUKRAAL FIRST EDITION EERSTE UITGAWE