



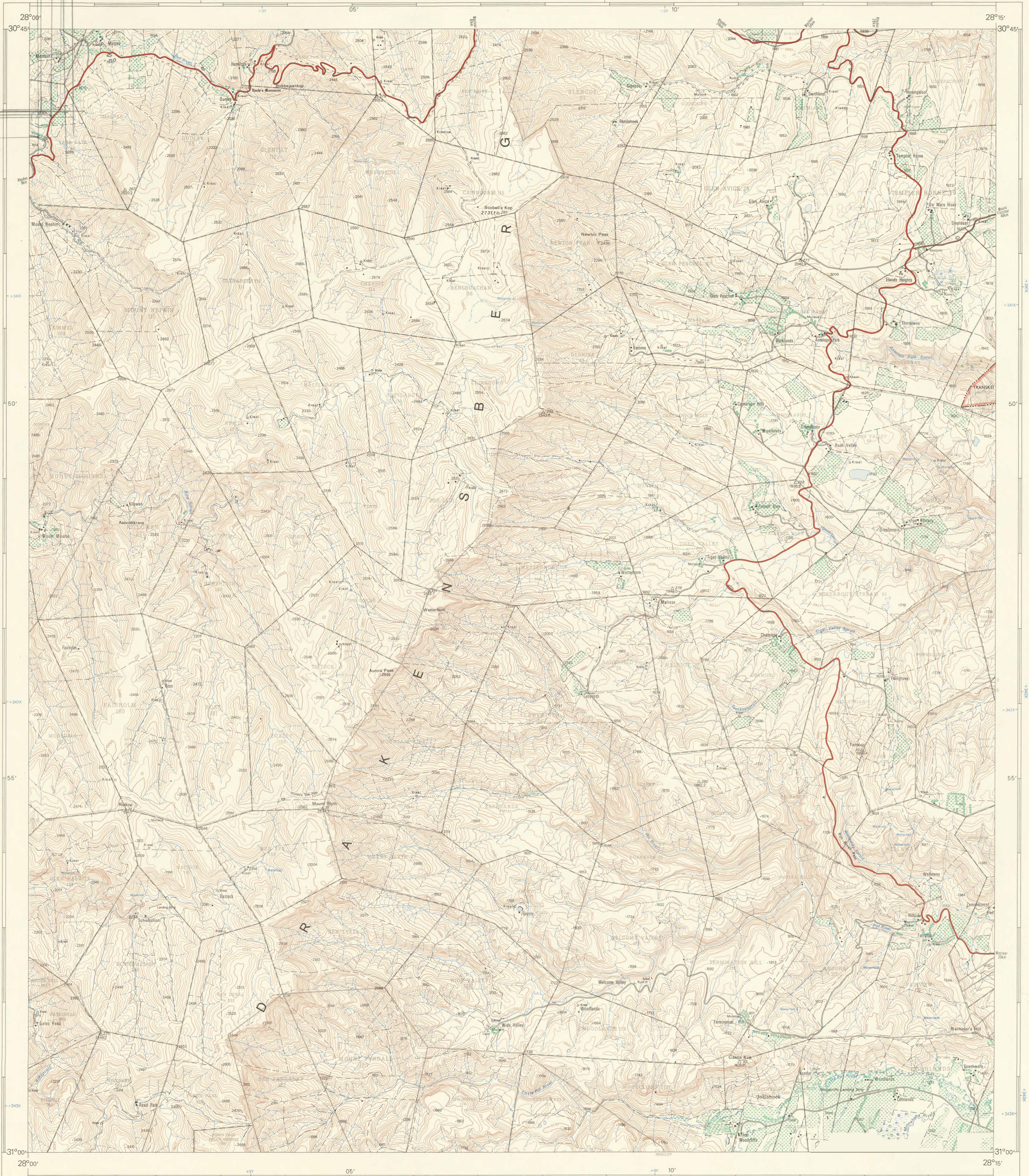
University of Fort Hare

Together in Excellence

1:50 000 SOUTH AFRICA
SUID-AFRIKA

3028CC ELANDS HEIGHTS

Refer to this Map as SOUTH AFRICA 1:50 000 Sheet 3028CC ELANDS HEIGHTS
Verwys na hierdie Kaart as SUID-AFRIKA 1:50 000 Vel 3028CC ELANDS HEIGHTS
SECOND EDITION TWEEDE UITGAWE

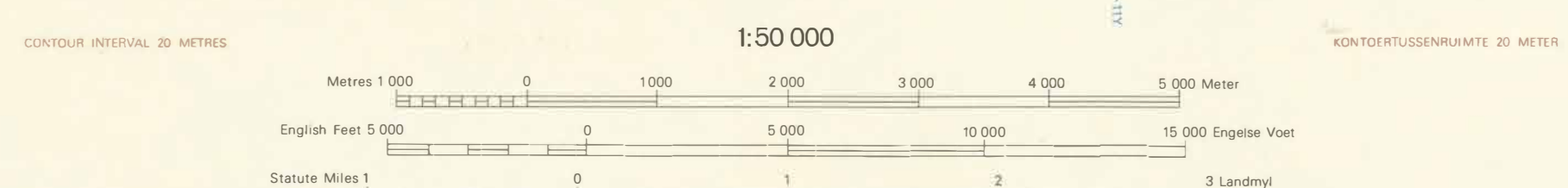


Geoidale magnetiese afwaaiering 2010 West
Geoidale magnetiese afwaaiering 2010 West
Magneetiese afwaaiering 1975 West
Magneetiese afwaaiering 1975 West

CONVERSION TABLE
OMSETTINGSTAFEL

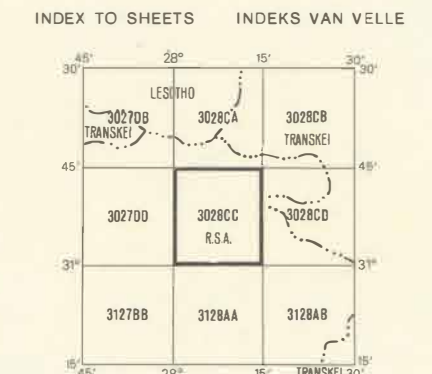
Metres	Feet
1 000	3 280
2 000	6 560
3 000	9 840
4 000	13 120
5 000	16 400
6 000	19 680
7 000	22 960
8 000	26 240
9 000	29 520
10 000	32 800

REFERENCE	VERKLARING
International Boundaries	Internasionale Grense
Provincial Boundaries	Provinsiale Grense
Multiple Track Railways	Veelkoudige Spoorlyne
Single Track Railways	Enkelspoortlyne
Electric Railways	Gelektreïseerde Spoorlyne
Narrow Gauge Railways	Smalspoorlyne
Service Railways	Diensspoorlyne
Freeways and Arterial Roads	Deurspaal en Hoofverkeerspaale
Main Roads	Hoofspaaie
Secondary Roads	Sekondêre Spaaie
Other Roads	Ander Spaaie
Trails and Hiking Trails	Doornse Spaaie en Voetspoorlyne
Power Lines	Kraglyne
Telephone Lines	Telefoonlyne
Post Offices, Police Stations and Posts	Poskantore, Polisestasies en -poste
Stores, Hotels, Schools and Places of Worship	Winkels, Hotelle, Skole en Plaaske van Aanbidding
Lighthouses and Marine Lights	Uurtoerings en Seewaartligte
Marine Beacons	Seewaartbakens



Heights are in metres above mean sea level
Hoogtes is in meter bo gemiddelde seespieël

Gauss Conform Projection Central Meridian 29° East, Clarke 1866 Spheroid
Gauss se Konforme Projeksie Middelemeridian 29° Oos, Clarke 1866 Sferoïd



REFERENCE	VERKLARING
Trig Beacons (Number and ground height)	Trig Bakens (Nommer en grondhoogte)
Magnetic Stations and Ground Signs	Magnetiese Stasies en Grondtekens
Monuments	Monumente
Dipping Tanks	Dipbakke
Windmills	Windpompe
Wells	Mure
Anti-erosion Walls	Grondbewaaringswalle
Excavations	Uitgrawings
Perennial Water	Standhoudende Water
Non-perennial Water	Nie-standhoudende Water
Dry Pans	Droë Panne
Springs	Fonteinne
Marshes Swamps and Velds	Moorasse en Vies
Pipelines	Pylyne
Prominent Rock Outcrops	Prominente Klipbanke
Terraces	Terrasse
Cultivated Lands	Bewerkte Lande
Orchards and Vineyards	Boorde en Weingarde
Trees and Bush	Bome en Bos

The delimitation of international boundaries on this map should not be considered as authoritative.
Die afbakening van internasionale grense op hierdie kaart moet nie as gegaghebend beskou word nie.

