

University of Fort Hare
Together in Excellence

Programme: BSc in Speech-Language Pathology

Department: Rehabilitative studies

Faculty of Health Sciences

East London Campus

SEMESTER EXAMINATION: NOVEMBER 2019
INTRODUCTION TO AUDIOLOGY AND SIGN
LANGUAGE

TIME: 3 HOURS

CODE: ITA121E

MARKS: 100

THIS QUESTION PAPER CONSISTS OF 5 PAGES INCLUDING THIS PAGE

INTERNAL EXAMINERS

U. Stemela

P.D. Gqiba

INSTRUCTIONS

1. Read all questions carefully before answering
2. Answer all the questions (8 in total)
3. Answer questions as they follow each other (1,2,3,4,5,6,7&8)
4. Answer both sections of the question paper

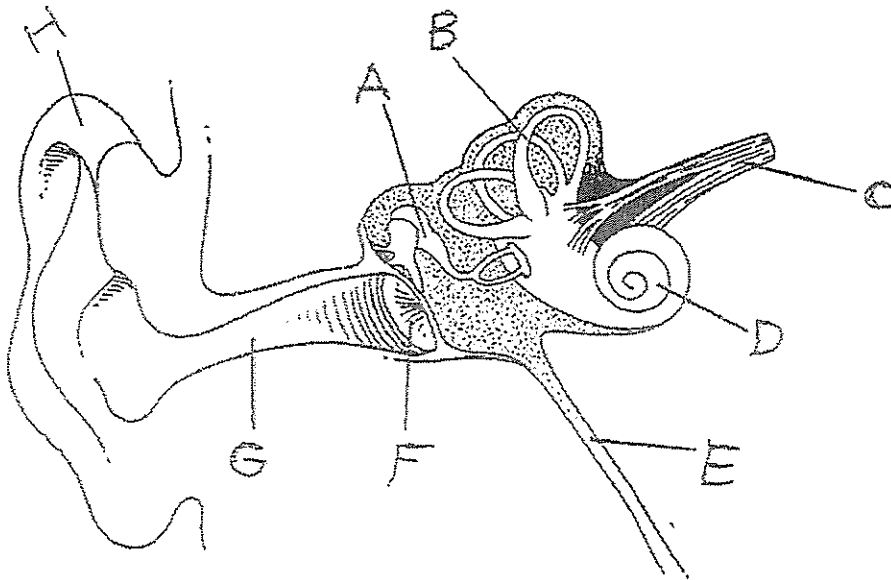
SECTION A

Question 1

1. Why do speech language pathologists have to know about audiology? (6)
2. List four domains of work or specialities of an audiologist? (4)

Question 2

1. Name the 3 main divisions of the ear and describe how each division contributes to sound transmission and hearing (6)
2. Label the following diagram (8)



3. List three ear pathologies/disorders and their possible causes (6)

Question 3

1. Define the following types of hearing losses:
 - 1.1 Conductive hearing loss (2)
 - 1.2 Sensorineural hearing loss (2)
 - 1.3 Mixed hearing loss (2)
 - 1.4 Functional/Non-organic hearing loss (2)

2. Hearing loss severity is defined according to threshold norms at different frequencies. What severity is indicated by thresholds in the following decibels:-
 - 2.1 90-120 dB (2)
 - 2.2 70-85 dB (2)
 - 2.3 45-55 dB (2)
 - 2.4 25-40 dB (2)
3. What is the meaning of the following hearing loss descriptions?
 - 3.1 Unilateral (2)
 - 3.2 Bilateral (2)

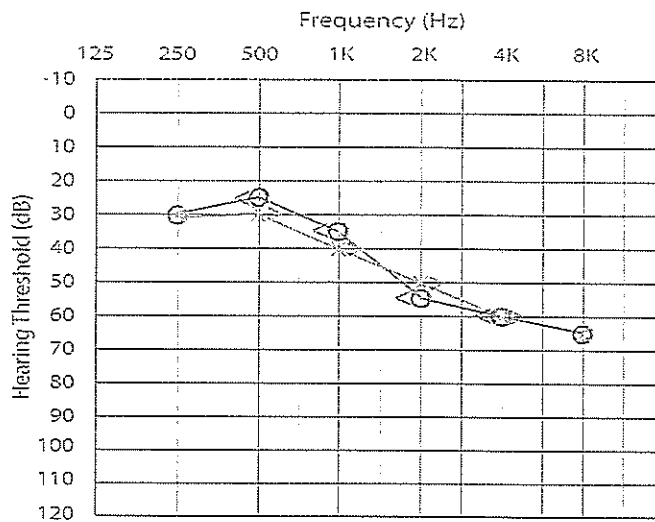
Question 4

1. Which ear part is tested with the following equipment/test? -
 - 1.1 Tympanometry (2)
 - 1.2 Otoacoustic machine (2)
 - 1.3 Otoscope (2)
 - 1.4 Auditory Brainstem Response Test (2)
2. Tympanometry results are interpreted using types of tympanograms.
 - 2.1 Which tympanogram type is for normal middle ear system? (2)
 - 2.2 Which tympanogram type is for restricted tympanic membrane mobility? (2)
 - 2.3 Which tympanogram type is for negative/positive pressure in the ear? (2)

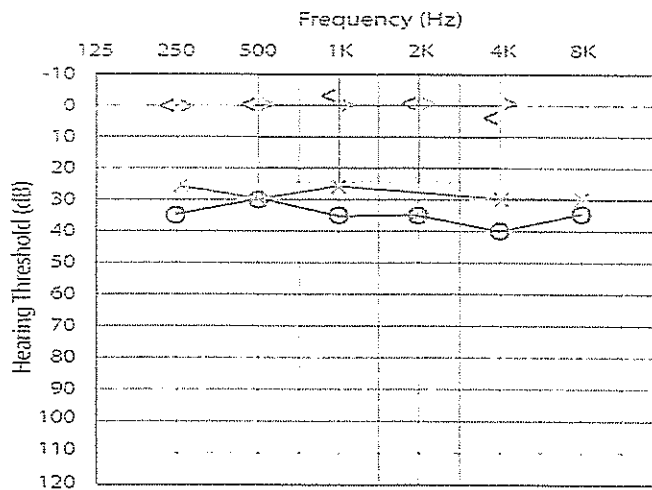
Question 5

1. Give an interpretation of each of the 2 given audiograms

Audiogram 1 (3)



Audiogram 2 (3)



SECTION B

Question 6

1. What is sign language? (2)
2. There are 4 identities related/associated to deafness list and define those identities (8)

Question 7

1. State whether the following statements regarding sign languages are True or False
 - 1.1 They are full-fledged natural languages with their own grammar and lexicon (2)
 - 1.2 They are universal languages and there might be similarities (2)
 - 1.3 Sign language is not body language / gestures or a type of non-verbal communication (2)
 - 1.4 There are three hundred sign languages are there in the world, but each country has its own native sign language (2)
 - 1.5 Despite regional dialects, SASL has the same grammatical structure countrywide (2)

Question 8

1. Fill in the missing words
 - 1.1 The method of communication where people use spoken, signed, written and other means of communication is called.....(2)
 - 1.2 The method of communication where people are taught to listen and speak is called.....(2)
 - 1.3 When deafness is not a disability it is usually taken as a(2)
 - 1.4 Finger spelling is not sign language but a technique.(2)
 - 1.5 “Nothing about us.....” is a slogan of people with disabilities. (2)

THE END