



Refer to this Map as SOUTH AFRICA 1:50,000 Sheet 3121AC WALKRAAL
Verwys na hierdie Kaart as SUIDAFRIKA 1:50,000 Vel 3121AC WALKRAAL EERSTE UITGAWE FIRST EDITION

1:50,000 SOUTH AFRICA
SUID-AFRIKA

3121AC WALKRAAL

University of Fort Hare
Together in Excellence

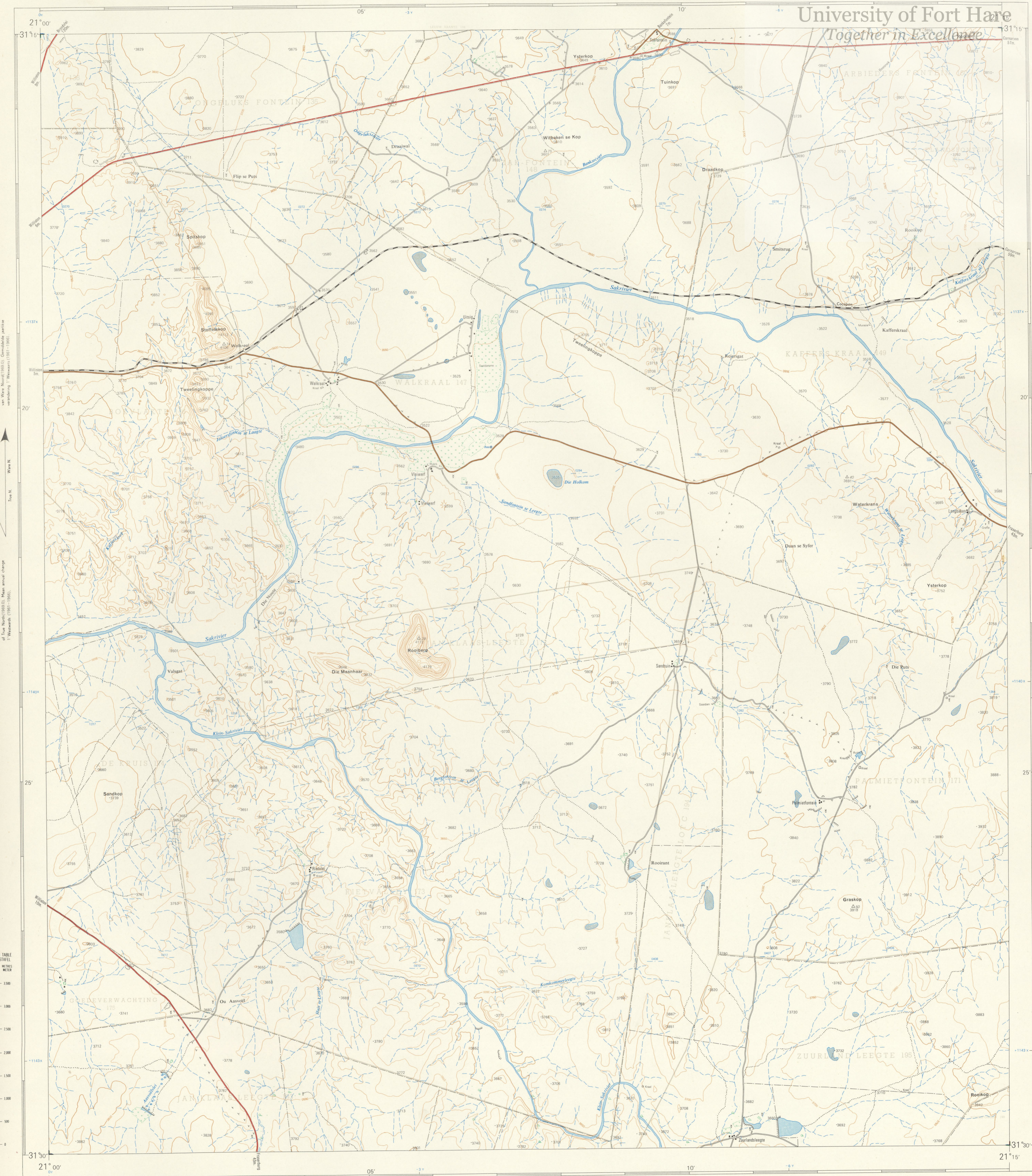


TABLE
STAFEL
METERS
METER

Air Photography 1962 (Job No. 482/82) Surveyed in 1968 and drawn in 1969 by the Trigonometrical Survey Office.
Lugfoto-grafie 1962 (Taak No. 482/82) Opgeneem in 1968 en geteken in 1969 deur die Dreiekmetsingkantoor.

T.S.O. 200/3995

Contour Interval 50 English Feet

1:50,000

Kontourruimte 50 Engelse Voet

Printed and Published in the Republic of South Africa by the Government Printer, Pretoria, 1969.
Gedruk en Uitgegee in die Republiek van Suid-Afrika deur die Staatsdrukker, Pretoria, 1969.

REFERENCE	VERKLARING
International Boundaries	Internasionale Grense
Provincial Boundaries	Provinsiale Grense
Multiple Track Railways	Veelvoudige Spoorlyne
Single Track Railways	Enkelspoornet
Electrified Railways	Gedelektreïseerde Spoorlyne
Narrow Gauge Railways	Smaltespoornet
Service Railways	Dienspoornet
National Roads	Nasionale Paaie
Main Roads	Hoofpaaie
Secondary Roads	Sekondêre Paaie
Other Roads	Ander Paaie
Trails and Footpaths	Doweë Paaie en Voetspaaie
Power Lines	Kraglyne
Telephone and Telegraph Lines	Telefoon- en Telegraaflyne
Post and Telegraph Offices, Police Stations and Posts, Stores, Hotels, Schools and Places of Worship	Pos- en Telegraafkantore, Polisie-stasies en poste, Winkels, Hotelle, Skole en Plaaske van Aandbidding
Lighthouses and Marine Lights	Vuurtoerings en Seevaartligte
Marine Beacons	Seevaartbakens
Trig. Beacons (Number to right and height below)	Driehoekbakens (Nommer regs en hoogte onder)

The grid lines of the South African Co-ordinate System are indicated in the margin by short black lines at 30,000 English Feet intervals, with co-ordinate values in units of 10,000 English Feet in blue.

All heights are given in English Feet to ground level. Alle hoogtes word in Engelse Voet tot op grondvlak aangetoon.

Die ruitlyn van die Suid-Afrikaanse Koordinatstelsel word in die sentrum aangetoon deur kort swart lyne. 30,000 Engelse Voet met saar, met koordinatwaardes in eenhede van 10,000 Engelse Voet in blou.

INDEX TO SHEETS / INDEKS VAN VELLE

31208B	31211A	31214B
31208B	31214C	31214D
31208B	31210A	31210B

Kabinets inligting verskaf deur die Landmeter-generaal, Kaap.
Omspronklike Paaie.

Cabinet information supplied by the Surveyor-General, Cape.
Original Forms.

PRICE PER SHEET 60c Prys per Vel
COPYRIGHT KOPIEREG

REFERENCE / VERKLARING

Magnetic Stations and Ground Signs	Magnetiese Stasies en Grondtekens
Huts	Hutte
Monuments	Monumente
Dipping Tanks	Dipbakke
Windmills	Mure
Anti-erosion Walls	Grondbewaringswal
Excavations	Uitgrawings
Perennial Water	Standhoudende Water
Non-perennial Water	Nie-standhoudende Water
Dry Pans	Droë Paaie
Fountains, Springs, Waterholes and Wells	Fonteinne, Waterkrans en Putte
Marshes, Swamps and Wets	Moerasse en Vieë
Pipelines	Pyplyne
Photo Centres	Fotomiddelpanne
Prominent Rock Outcrops	Uitstaande Klippanne
Terraces	Terrasse
Cultivated Lands	Bewerkte Lande
Orchards and Vineyards	Boere en Wingerde
Trees and Bush	Bome en Bos

3121AC WALKRAAL FIRST EDITION
EERSTE UITGAWE