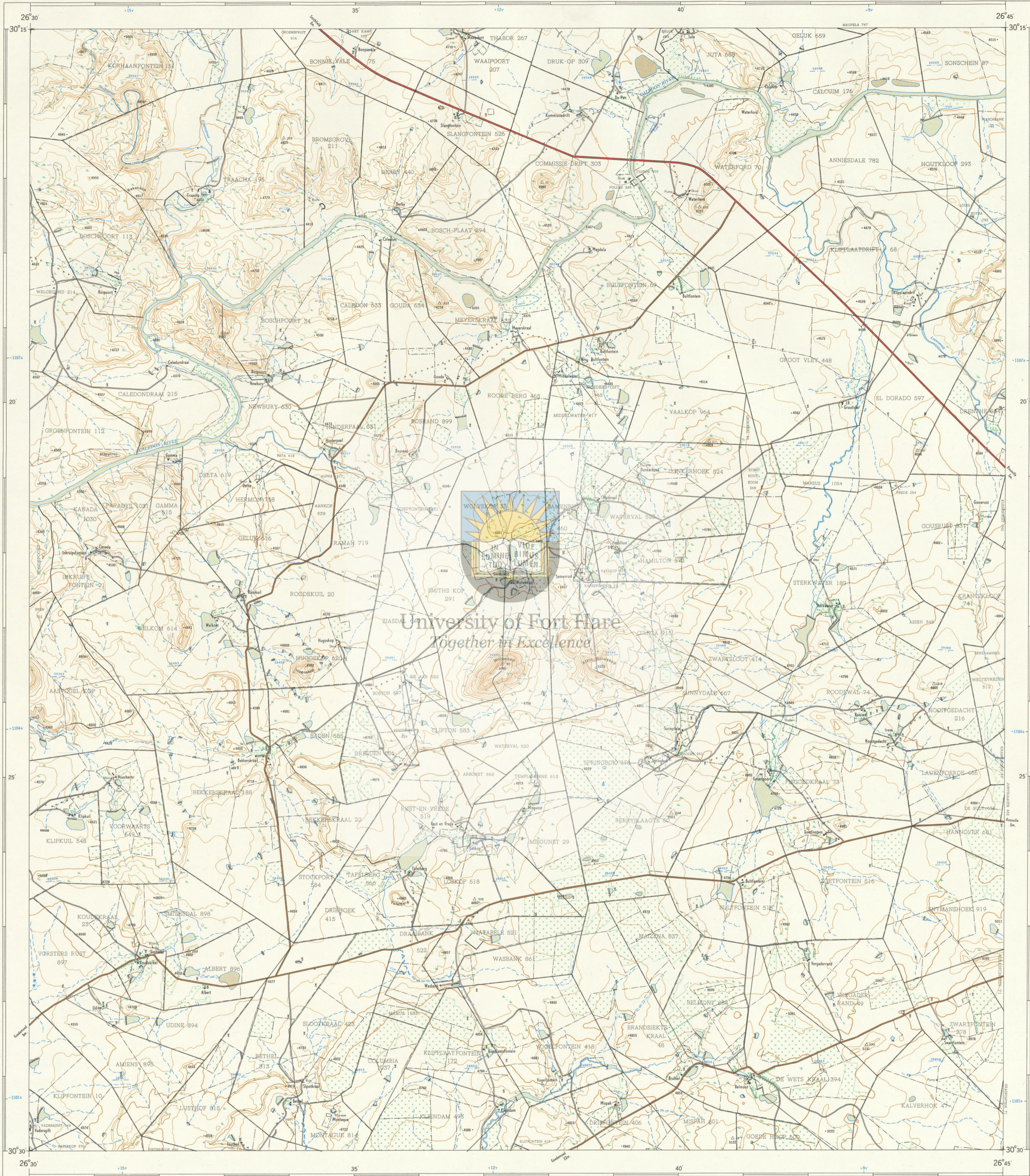




1:50,000 SOUTH AFRICA  
SUID-AFRIKA

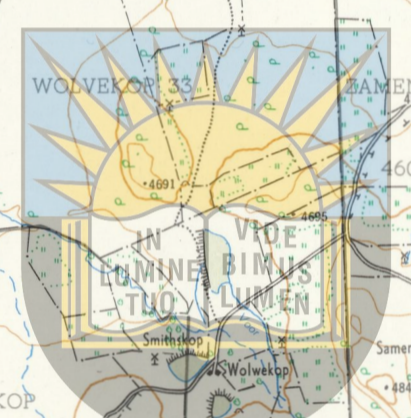
3026BC KOUKRAAL

Refer to this Map as SOUTH AFRICA 1:50,000 Sheet 3026BC KOUKRAAL  
Verwys na hierdie Kaart as SUID-AFRIKA 1:50,000 Vel 3026BC KOUKRAAL  
FIRST EDITION EERSTE UITGAVE



Magnetic declination 1964 (D) in centesimal degrees  
Magnetiese afwaaing 1964 (D) in sentesimale grade  
Annual change 3' Westward  
Jaarlikse verandering 3' Westwaarts

CONVERSION TABLE  
VERKLEENINGSTAFEL  
FEET  
METERS  
METER



University of Fort Hare  
Together in Excellence

Air Photography 1952. Surveyed and drawn in 1953 by the Topographical Survey Office.  
Lugfoto's 1952. Opgeneem en geteken in 1953 deur die Driehoeksmetingskantoor.

Contour Interval 50 English Feet  
Kontourteruimtes 50 Engelse Voet

1:50,000

Scale bars in English Feet, Statute Miles, and Metres.

Printed and Published in the Republic of South Africa by the Government Printer, Pretoria, 1964.  
Gedruk en Uitgegees in die Republiek van Suid-Afrika deur die Staatsdrukker, Pretoria, 1964.

REFERENCE VERKLARING

International Boundaries	Internasionale Grense
Provincial Boundaries	Provinsiale Grense
Multiple Track Railways	Veevoudige Spoorlyne
Single Track Railways	Enkelspoorlyne
Electric Railways	Gelektreïseerde Spoorlyne
Narrow Gauge Railways	Smalspoorlyne
Service, Canal and Mineral Railways	Diens-, Suikerriet- en Mineralspoorlyne
National Roads	Nasionale Paaie
Main Roads	Hoofpaaie
Secondary Roads	Sekondêre Paaie
Other Roads	Ander Paaie
Tracks and Footpaths	Dowwe Paaie en Voetpaaie
Power Lines	Kraglyne
Telephone and Telegraph Lines	Telefoon- en Telegraaflyne
Post and Telegraph Offices, Police Stations and Posts, Stores, Hotels, Schools and Places of Worship	Pos- en Telegraafkantore, Polisie-stasies en poste, Winkels, Hotelle, Skole en Plekke van Aanbedding
Lighthouses and Marine Lights	Vuurtoringe en Seevaartligte
Marine Beacons	Seevaartbakens
Trig. Beacons (number to right and height below)	Driehoeksbakens (Nommer regs en hoogte onder)

The grid lines of the South African Co-ordinate System are indicated in the margin by short black lines at 20,000 English Feet intervals, with co-ordinate values in units of 10,000 English Feet in blue.

All heights are given in English Feet to ground level.  
Alle hoogtes word in Engelse Voet tot op grondvlak aangetoon.  
Gauss Conform Projection. Central Meridian 27° East.  
Gauss se Konforme Projeksie. Middellandse Meridian 27° Oos.

REFERENCE VERKLARING

Magnetic Stations and Ground Signs	Magnetiese Stasies en Grondtekens
Bantu Huts	Bantoeilutte
Monuments	Monumente
Dipping Tanks	Dippbakke
Windmills	Windpompe
Stone Walls	Klipmuere
Anti-erosion Walls	Grondbewaringswalle
Excavations	Liggingswalle
Perennial Water	Standhoudende Water
Non-perennial Water	Nie-standhoudende Water
Dry Pans	Droë Panne
Fountains, Springs, Waterholes and Wells	Fonteinne, Watergate en Putte
Marshes, Swamps and Vleis	Moerasse en Vleis
Pipelines	Pylyne
Photo Centres	Fotomiddelpunte
Prominent Rock Outcrops	Uitstaande Klipbanke
Terraces	Bewerkte Lande
Cultivated Lands	Bewerkte Lande
Orchards and Vineyards	Boorde en Wingerde
Trees and Bush	Bome en Bos

INDEX TO SHEETS INDEKS VAN VELLE

3026AB	3026BA	3026BB
3026AD	3026BC	3026BD
3026CB	3026CA	3026CB

PRICE PER SHEET 60c PRYS PER VEL  
COPYRIGHT KOPIEREG

3026BC KOUKRAAL FIRST EDITION EERSTE UITGAVE