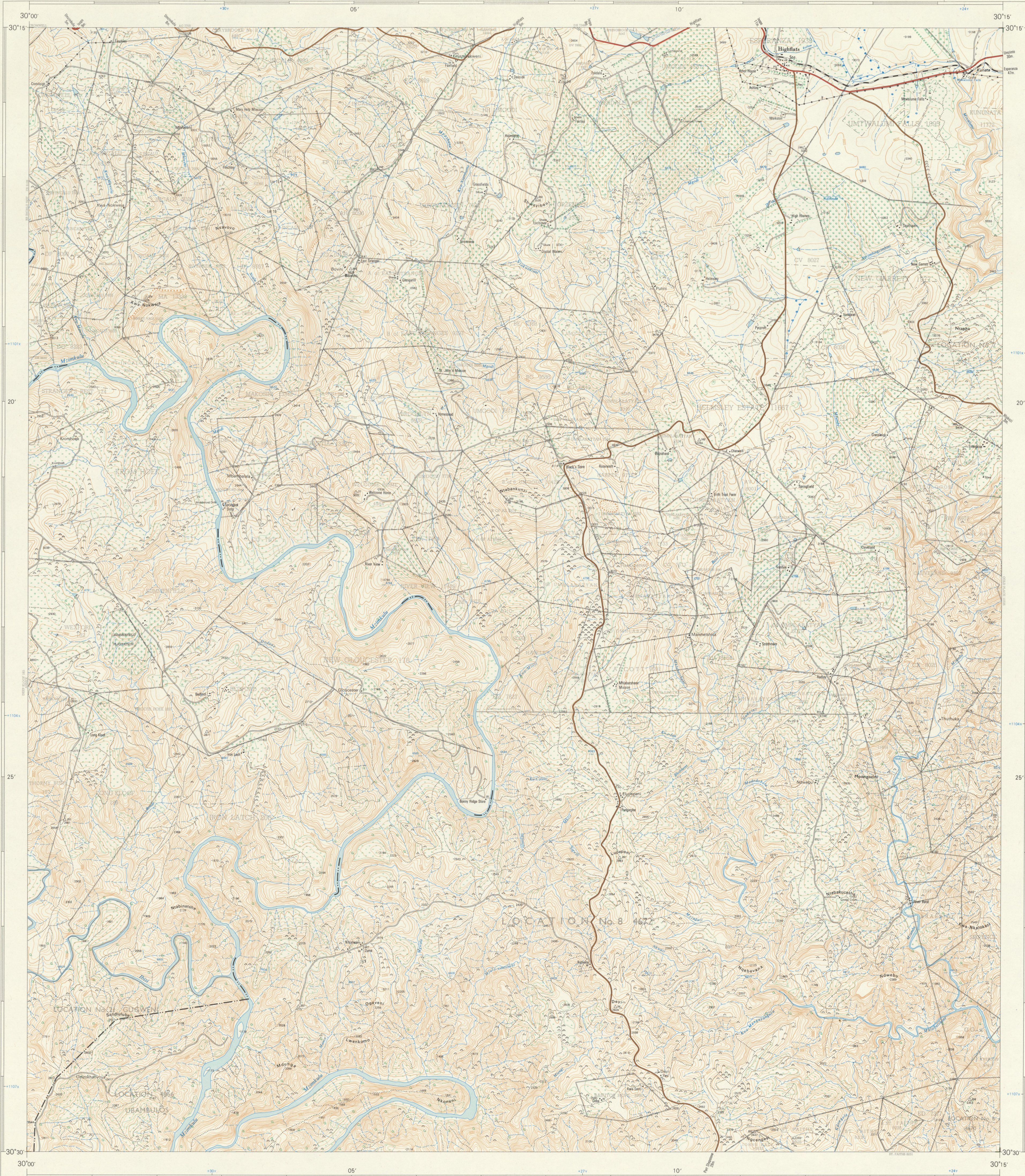


University of Fort Hare Together in Excellence

1:50,000 SOUTH AFRICA SUID-AFRIKA

3030AC HIGHFLATS

Refer to this Map as SOUTH AFRICA 1:50,000 Sheet 3030AC HIGHFLATS



Air Photography 1959 (Job No. 433/59). Surveyed in 1958 and drawn in 1959 by the Trigonometrical Survey Office.

Contour Interval 50 English Feet

1:50,000

Kontourtussenruimte 50 Engelse Voet

Printed and Published in the Republic of South Africa by the Government Printer, Pretoria.

T.S.O. 200/3744

REFERENCE VERKLARING table with symbols for boundaries, roads, railways, and other features.

The grid lines of the South African Co-ordinate System are indicated in the margin by short black lines at 20,000 English Feet intervals...

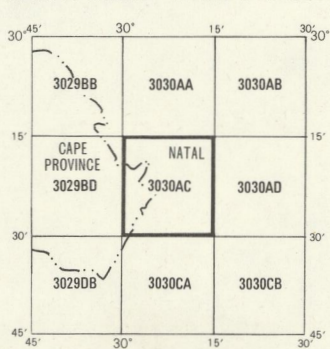
All heights are given in English Feet to ground level.

Alle hoogtes word in Engelse Voet tot op grondhoogte aangegeef.

Gauss Conform Projection, Central Meridian 31° East.

Gauss se Konforme Projeksie, Middelliniedraan 31° Oos.

INDEX TO SHEETS INDEKS VAN VELLE



PRICE PER SHEET 60c PAYS PER VELLE 60c

COPYRIGHT KOPIEREG

REFERENCE VERKLARING table with symbols for magnetic stations, huts, monuments, and other features.

3030AC HIGHFLATS FIRST EDITION EERSTE UITGAWE