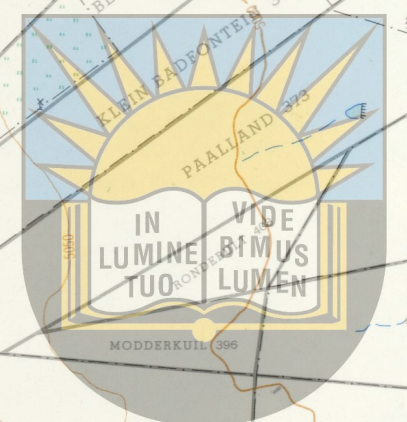
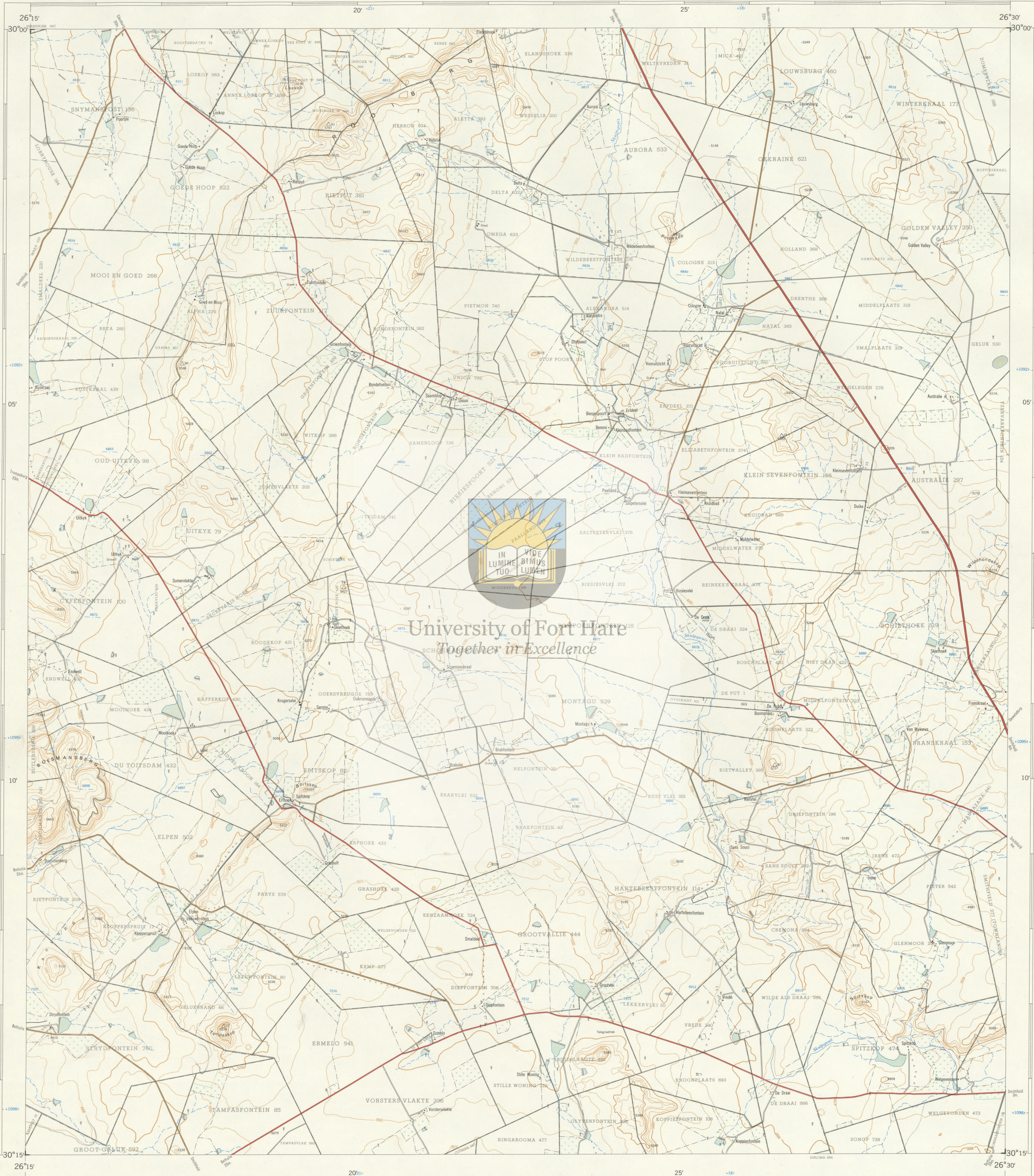




1:50,000 SUID-AFRIKA SOUTH AFRICA

3026AB SANS SOUCI

Verwys na hierdie Kaart as SUID-AFRIKA 1:50,000 Vgl 3026AB SANS SOUCI Refer to this Map as SOUTH AFRICA 1:50,000 Sheet EERSTE UITGAWE FIRST EDITION



University of Fort Hare Together in Excellence

Lugfotografie 1952 Opgeteken in 1952 en geteken in 1953 deur die Dreieksmetingskantoor. Air Photography 1952. Surveyed in 1952 and drawn in 1953 by the Trigonometrical Survey Office.

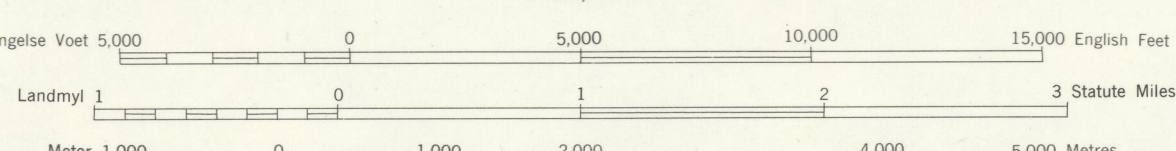
Hoogtegrens Tussenruimte 50 Engelse Voet

1:50,000

Contour Interval 50 English Feet

Gebruik en Uitgawe in die Republiek van Suid-Afrika deur die Staatsdrukker, Pretoria, 1954. Printed and Published in the Republic of South Africa by the Government Printer, Pretoria, 1954.

T.S.O. 200/1972

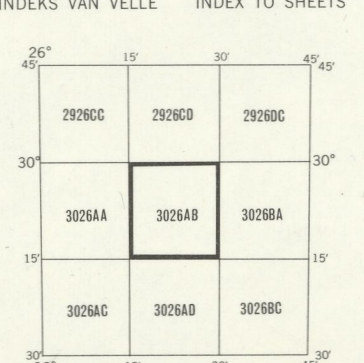


VERKLARING	REFERENCE
Internasionale Grense..... International Boundaries
Provinciale Grense..... Provincial Boundaries
Veevoedige Spoorlyne..... Multiple Track Railways
Enkelspoorlyne..... Single Track Railways
Geleëktreïseerde Spoorlyne..... Electrified Railways
Smalspoorlyne..... Narrow Gauge Railways
Diens-, Suikerriet- en Minerale spoorlyne..... Service, Cane and Mineral Roads
Nasionale Paale..... National Roads
Hoofpaale..... Main Roads
Sekondêre Paale..... Secondary Roads
Ander Paale..... Other Roads
Dowwe Paale en Voetpaale..... Tracks and Footpaths
Kraglyne..... Power Lines
Telefoon- en Telegraaflyne..... Telephone and Telegraph Lines
Post- en Telegraafkantore, Polisie-stasies en -poste, Winkels, Hotelle, Skole en Plaekke van Aanbidding..... Post and Telegraph Offices, Police Stations and Posts, Stores, Hotels, Schools and Places of Worship
Vuurtorings en Seeaartligte..... Lighthouses and Marine Lights
Seevaartbakens..... Marine Beacons
Driehoeksbakens (nommer regs en hoogte onder)..... Trig. Beacons (number to right and height below)

Die rolyne van die Suid-Afrikaanse Koordinatstelsel word in die landrems aangegewe deur kort swart lyne at 20,000 Engelse Voet en makker, met koördinaatwaardes in eenheids van 10,000 Engelse Voet in blou.

All heights are given in English Feet to ground level. All heights are given in English Feet to ground level. The grid lines of the South African Co-ordinate System are indicated in the margin by short black lines at 20,000 English Foot intervals, with co-ordinate values in units of 10,000 English Feet in blue.

INDEKS VAN VELLE INDEX TO SHEETS



Kadastrale meting verskaf deur die Landmeter-generaal, O.V.S. Cadastral measurement supplied by the Surveyor-General, O.F.S.

PHYS PER VEL 60C PRICE PER SHEET KOPIEREG COPYRIGHT

VERKLARING	REFERENCE
Magnetiese Stasies en Grondtekens..... Magnetic Stations and Ground Signs
Naturelshutte..... Native Huts
Monumente..... Monuments
Dipbakke..... Dipping Tanks
Windpompe..... Windmills
Klipmure..... Stone Walls
Grondbewaringswalle..... Anti-erosion Walls
Uitgrawings..... Excavations
Standhoudende Water..... Perennial Water
Nie-standhoudende Water..... Non-perennial Water
Droë Panne..... Dry Pans
Fontene, Watergate en Putte..... Fountains, Springs, Waterholes and Wells
Moerasse en Vleie..... Marshes, Swamps and Vleis
Pyplyne..... Pipelines
Fotostasies..... Photo Centres
Uitstaande Klipbanke..... Prominent Rock Outcrops
Terrasse..... Terraces
Bewerkte Lande..... Cultivated Lands
Borde en Wingerde..... Orchards and Vineyards
Bome en Bos..... Trees and Bush

3026AB SANS SOUCI EERSTE UITGAWE FIRST EDITION