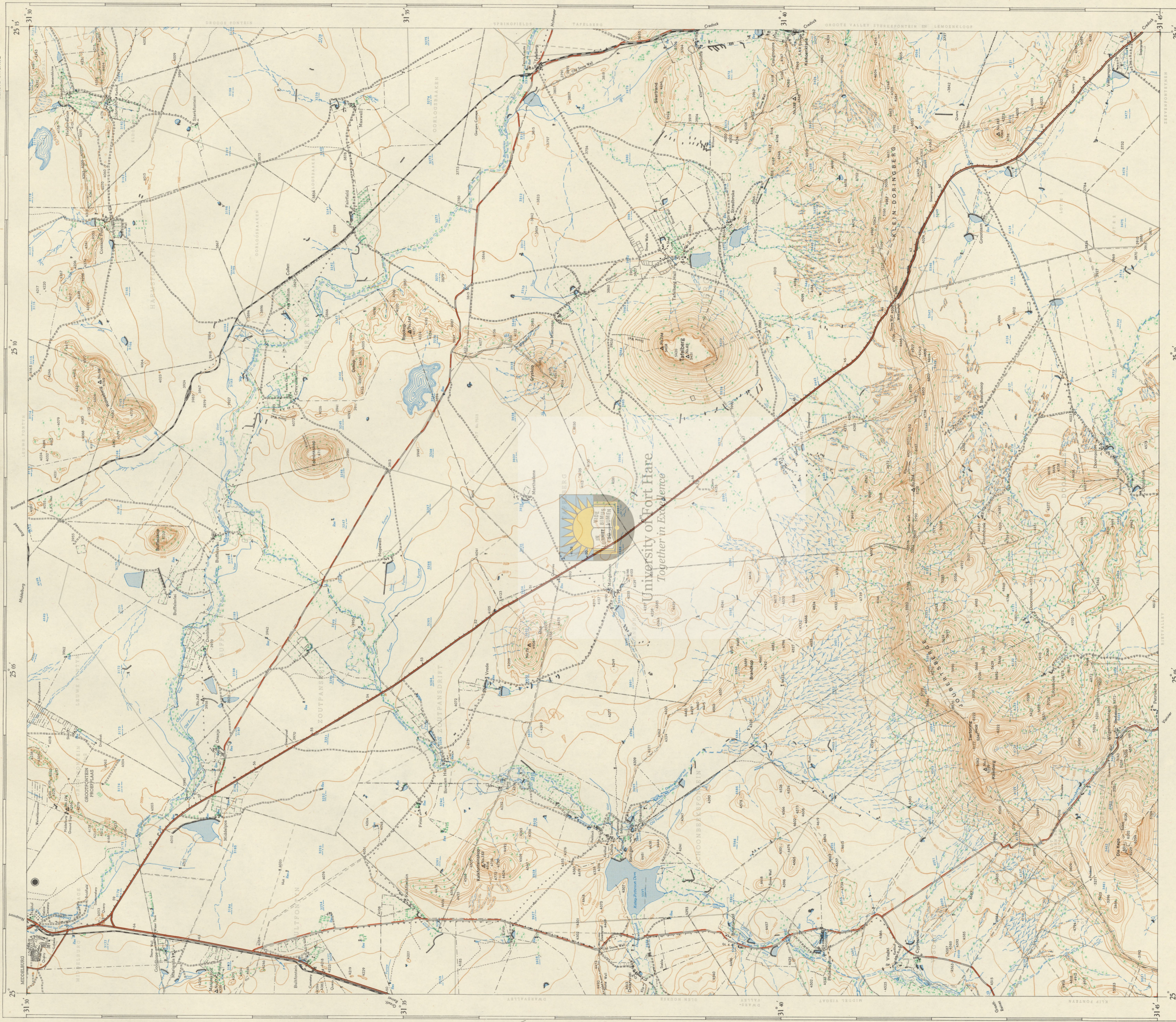


1:50,000 SOUTH AFRICA SUID-AFRIKA

TAFELBERG 3125CA

Refer to this map as SOUTH AFRICA 1:50,000 Sheet TAFELBERG 3125CA  
Verwys na hierdie kaart as SUID-AFRIKA 1:50,000 Veli

FIRST EDITION  
EERSTE UITGAWE



Magistrale wêreldreën in rooi-geel  
Met 27,20' Wêreld- en Wêreld-keëre  
1:50,000 (1:50,000)

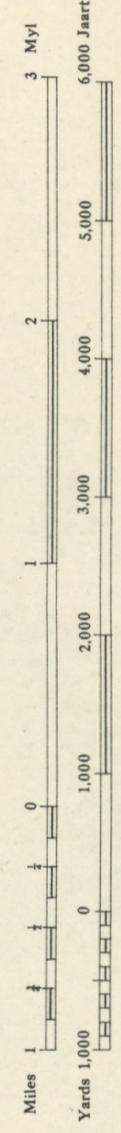
Air Photography 1948, Field Survey 1949, Compiled in 1949 and drawn by the Topographical Survey Office, 1951.  
Lugfoto's 1948, Veldtoetsing 1949, Samegestel in 1949 en geteken deur die Topografiese Afdeling, 1951.  
T.S.O. 2001833

**REFERENCE**

Boundaries, International	-----
Provincial	-----
Railways, Double	====
Electricified	====
Single	====
Narrow Gauge	====
Mineral, Sugar, Cane, etc.	====
Roads, National	====
Main	====
Secondary	====
Other	====
Treks and Footpaths	-----
Lighthouses, National Monuments	-----
Telegraph or Telephone Lines	-----
Power Lines	-----
Bench Marks (Height in metres (m))	-----
Trig. Beacon (Height in Eng. feet)	-----
Police Stations, Street, Hotels	-----
Post or Telegraph Office	-----
Native Hut, Cattle, Kral	-----
Spot Heights (Eng. feet)	-----
Quarries, Sandpits	-----
Mine Dumps	-----
Krans	-----
Coastal Rocks, Rock Outcrops	-----
Fence	-----

**VERKLARING**

Gene, Internasionale	-----
Provinsiale	-----
Spoorwag, Dubbelspoer	====
Gaalkat	====
Enkelspoer	====
Smalspoer	====
Mineraal, Suikerriet, ens.	====
Paas, Nasionale	====
Hoof-	====
Sekondêre	====
Ander	====
Dowewagte en Voerwagte	-----
Vuurtoer, Nasionale Monumente	-----
Telegraaf of Telefoonlyn	-----
Kraglyn	-----
Hoogtekeëre (Hoogte in metere (m))	-----
Trig. Baken (Hoogte in Eng. voet)	-----
Polisie-stasie, Straat, Hotelle	-----
Pos- of Telegraafkantore	-----
Indië Hut, Kattie, Kral	-----
Hoopie Punt (Eng. voet)	-----
Swangroewe, Sandgate	-----
Myn Dumps	-----
Krans	-----
Myne	-----
Karoo, Rotstegom	-----
Kranse, Rotstegom	-----
Draad	-----



**INDEX TO ADJOINING SHEETS**

31	24	30	25	31	26
30	24	30	25	31	26
32	24	30	25	31	26

THE SHEET - MATCHES - IS 3125CA  
HIERDIE VEL - GEARBEED - IS 3125CA  
PRICE PER SHEET 3/6 PAYS PER VEL

**REFERENCE**

Rivers, perennial	-----
non-perennial	-----
Moraine or Vlei	-----
Pans, Lakes	-----
Weirs, Polders (P), Fens	-----
Dams, Canals	-----
Fountains, Wharfedike or Wells	-----
Windmills, Major Pumps	-----
Sand and Sand Dunes	-----
Eroded Areas	-----
Contours	-----
Cultivated Lands	-----
Orchards, Vineyards	-----
Plantations	-----
Windbreaks and Avenues	-----
Scattered Bush, Bushveld	-----
Dense Bush and Forests	-----
Cactus	-----

**VERKLARING**

Reënreë, permanente	-----
nie permanente	-----
Moraine of Vlei	-----
Pan, Meer	-----
Stuwering, Dijk (P), Vee	-----
Damme, Kanale	-----
Fontein, Waterwiel of Wel	-----
Windmool, Moerfontein	-----
Sand en Sand Duine	-----
Verwoëde Gebiede	-----
Hooflynne	-----
Bewerkte Lande	-----
Boorde, Wynegorde	-----
Plantasies	-----
Windsakke en Lane	-----
Versepreide Bosse, Bosveld	-----
Digte Bos en Woude	-----
Kaktus	-----