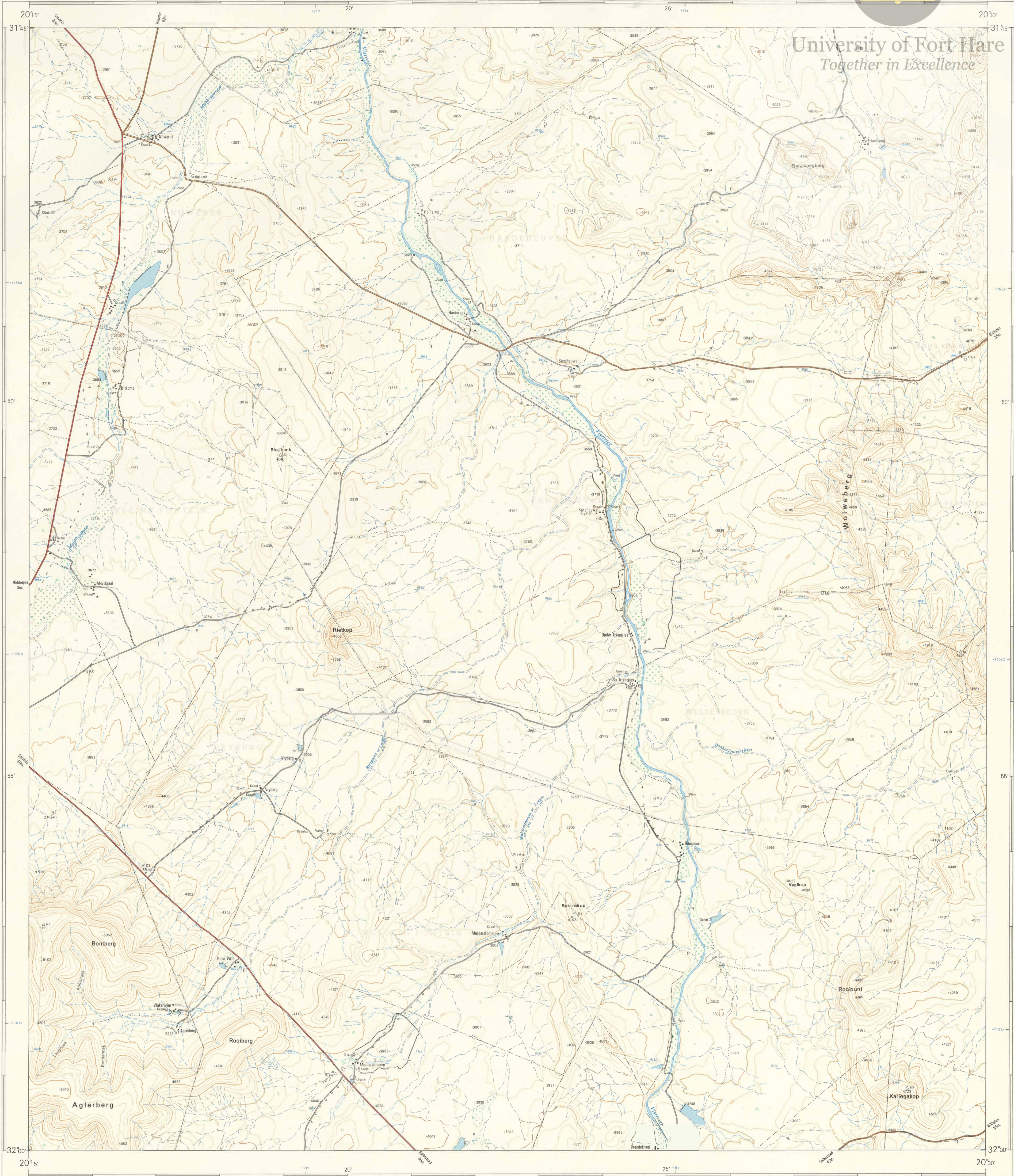




University of Fort Hare Together in Excellence



Lugfoto's 1962 (Taak No. 462/62) Opgeneem in 1968 en geteken in 1969 deur die Diehoekmetingskantoor. Air Photography 1962 (Task No. 462/62) Surveyed in 1968 and drawn in 1969 by the Trigonometrical Survey Office.

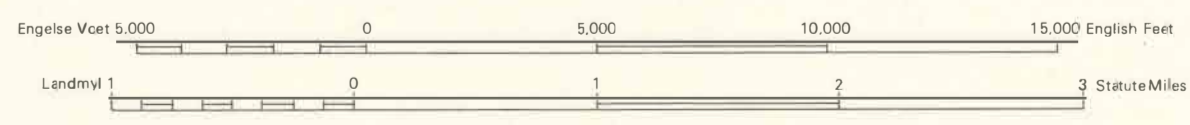
Kontuursuivalintjie: 50 Engelse Voet Contour Interval 50 English Feet

1:50,000

Contour Interval 50 English Feet

Getrukk en Uitgegeen in die Republiek van Suid-Afrika deur die Staatsdrukker, Pretoria, 1969. Printed and Published in the Republic of South Africa by the Government Printer, Pretoria, 1969.

T.S.O. 200/3989



VERKLARING	REFERENCE
Internasionale Grense	International Boundaries
Provinsiale Grense	Provincial Boundaries
Veevoudige Spoorlyne	Multiple Track Railways
Enkelspoorlyne	Single Track Railways
Gabelspoorlyne	Electrified Railways
Smalspoorlyne	Narrow Gauge Railways
Diensspoorlyne	Service Railways
Nasionale Paaie	National Roads
Hooppaaie	Main Roads
Sekondêre Paaie	Secondary Roads
Ander Paaie	Other Roads
Draing Paaie en Voetpaaie	Trails and Footpaths
Kraglyne	Power Lines
Telefoon- en Telegraaflyne	Telephone and Telegraph Lines
Pos- en Telegraafkantore, Polisie-stasies en -poste, Winkels, Hotelle, Skole en Plaaske van Aankomding	Post and Telegraph Offices, Police Stations and Posts, Stores, Hotels, Schools and Places of Worship
Vuurtorings en Seewarfigte	Lighthouses and Marine Lights
Seevaarbakens	Marine Beacons
Diehoekbakens (Nommer regs en hoogte onder)	Trig. Beacons (Number to right and height below)

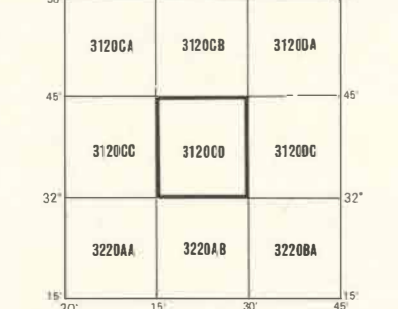
Die rooilyne van die Suid-Afrikaanse Koordinatstelsel word in die kantoelinge aangegee deur kort swart lyne. 30.000 Engelse Voet van mekaar, met koördinaatwaardes in eenhede van 10.000 Engelse Voet in blou.

Hoogtes is in Engelse Voet op grondhoogte. Elevations are in English Feet to ground level.

The grid lines of the South African Coordinate System are indicated in the margin by short black lines at 30,000 English Feet intervals, with co-ordinate values in units of 10,000 English Feet in blue.

Gauss se Kontrone Projeksjie, Middellinied 21° Oos, Clerk's 1880 Spheroid, Gauss Conform. Projection, Central Meridian 21° East, Clerk's 1880 Spheroid.

INDEKS VAN VELLE INDEX TO SHEETS



PRYS PER VEL 60c KOPIEREG PRIS PER BLAD 60c COPYRIGHT

VERKLARING	REFERENCE
Magnetiese Stasies en Grondtekens	Magnetic Stations and Ground Signs
Hutte	Huts
Monumente	Monuments
Dipbakke	Dipping Tanks
Mure	Walls
Grondbewaringswalle	Anti-erosion Walls
Uitgrawings	Excavations
Standhouende Water	Perennial Water
Nie-standhouende Water	Non-perennial Water
Droë Pannetjies	Dry Pans
Fonteinne, Watergate en Putte	Fountains, Springs, Waterholes, and Wells
Moerasse en Vlei	Marshes, Swamps and Vleis
Pyplyne	Pipelines
Fotomiddelpeunte	Photo Centres
Uitstaande Klippanke	Prominent Rock Outcrops
Terrasse	Terraces
Bewerkte Lande	Cultivated Lands
Bosreie en Wingerde	Orchards and Vineyards
Bome en Bos	Trees and Bush