

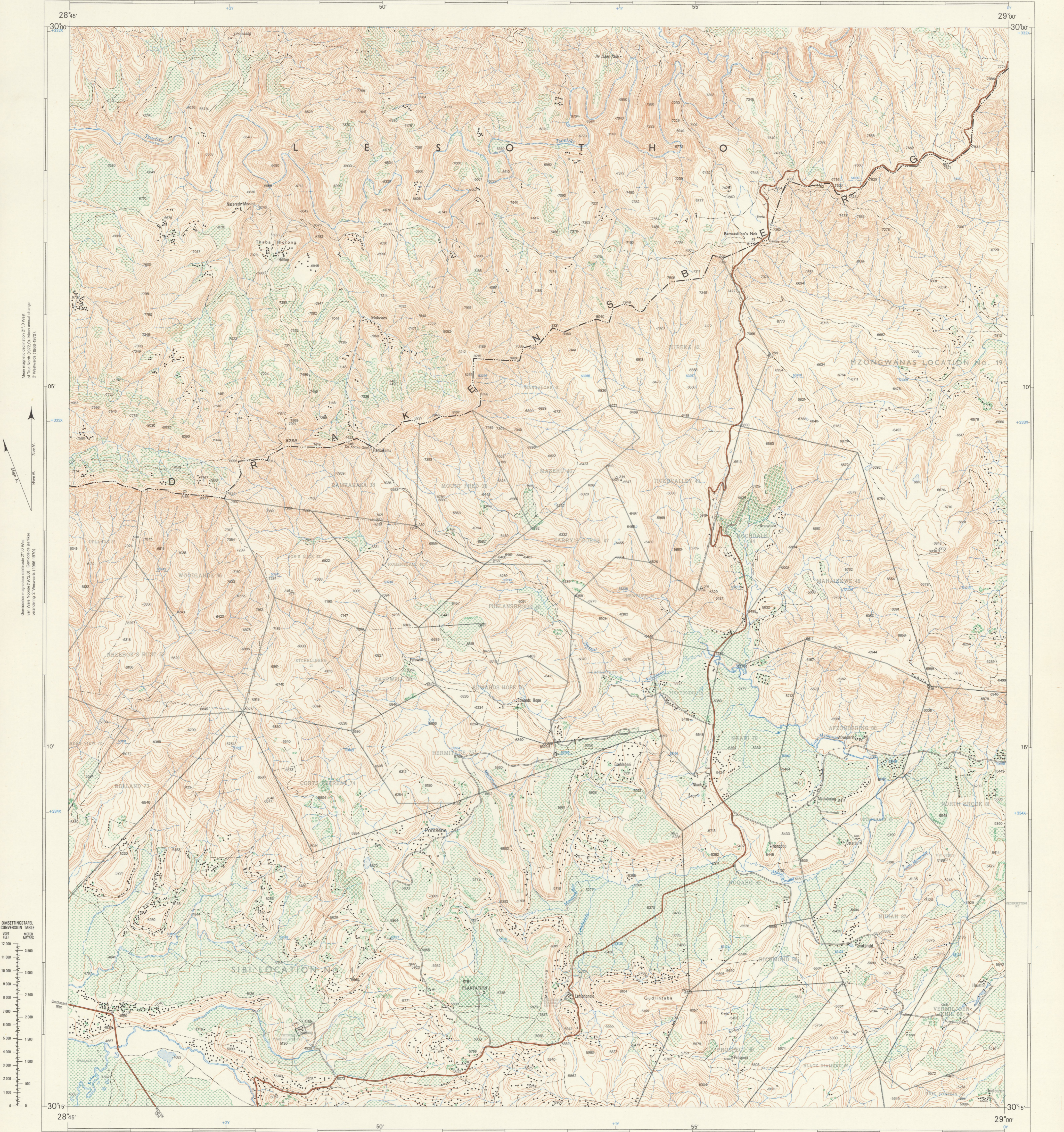


University of Fort Hare Together in Excellence

1:50 000 SUID-AFRIKA
SOUTH AFRICA

3028BB LEHLOHONOLO

Verwys na hierdie Kaart as SUID-AFRIKA 1:50 000 Vbl 3028BB LEHLOHONOLO
Refer to this Map as SOUTH AFRICA 1:50 000 Sheet EERSTE UITGAWE FIRST EDITION



Mean magnetic declination 27° 0' West of True North (1972 C). Mean annual change 2' Westwards (1986-1970).

Contour interval 50 English Feet.

Contour interval 50 English Feet.

OMSETTINGSTAFEL
CONVERSION TABLE

VOET FEET	METER METRES
12 000	3 658
11 000	3 353
10 000	3 048
9 000	2 743
8 000	2 438
7 000	2 133
6 000	1 828
5 000	1 523
4 000	1 218
3 000	913
2 000	608
1 000	303
0	0

Lugtopografie 1953. (Task No.220/53). Oppgemaakt in 1971 en geteken in 1971 deur die Driehoekmetingskantoor.
Air Photography 1953. (Job No.220/53). Surveyed in 1971 and drawn in 1971 by the Triangometrical Survey Office.

CONTOUR INTERVAL 50 ENGLISH FEET

1:50 000

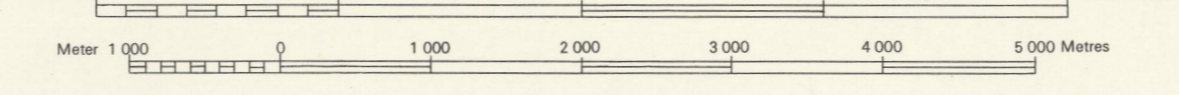
KONTORTUUSNUMMER 50 ENGLSE VOET

Gedruk en uitgegee deur die Staatsdrukker, Private Bag 85, Pretoria 1972.
Printed and published by the Government Printer, Private Bag 85, Pretoria 1972.

VERKLARING	REFERENCE
Internasionale Grense	International Boundaries
Provisoriale Grense	Provisional Boundaries
Veelwagige Spoorlynne	Multiple Track Railways
Eenkeelwagige Spoorlynne	Single Track Railways
Geelektreifiseerde Spoorlynne	Electrified Railways
Smalspoorlynne	Narrow Gauge Railways
Dienstspoorlynne	Service Railways
Nasionale Paasie	National Roads
Hooppaasie	Main Roads
Sekondere Paasie	Secondary Roads
Ander Paasie	Other Roads
Downwe Paasie en Voetpaasie	Tracks and Footpaths
Kraglynne	Power Lines
Telefoonlynne	Telephone Lines
Postkantore, Polisieostasies en -poste, Winkels, Hotelle, Skole en Plaaslike van Aandblyning	Post Offices, Police Stations and Posts, Stores, Hotels, Schools and Places of Worship
Boewerke en Senevaartgigte	Lighthouses and Marine Lights
Seewaartbaken	Marine Beacons
Trig.Bakens (Nommer regs en hoogte onder)	Trig. Beacons (Number to right and height below)

CONTOUR INTERVAL 50 ENGLISH FEET

Engelse Voet 5 000



KONTORTUUSNUMMER 50 ENGLSE VOET

VERKLARING

REFERENCE

Magnetiese Stasies en Grondtekens	Magnetic Stations and Ground Signs
Hutte	Huts
Monumente	Monuments
Dipbakke	Dipping Tanks
Windpompe	Windmills
Mure	Walls
Grondbewaringswalle	Anti-erosion Walls
Ontgrawings	Excavations
Standhouende Water	Perennial Water
Nie-standhouende Water	Non-perennial Water
Droë Panne	Dry Pans
Fontene, Watergate en Putte	Springs, Waterholes and Wells
Moerasse en Vleie	Marshes, Swamps and Vies
Pylyne	Pylones
Fotomiddelpeunte	Photo Centres
Prominente Klipbanke	Prominent Rock Outcrops
Terrasse	Terraces
Boewerke Lande	Cultivated Lands
Boesie en Wingerde	Orchards and Vineyards
Bome en Bos	Trees and Bush

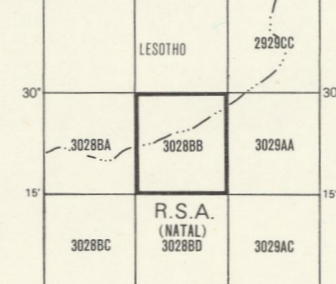
Die ruitlyn van die Suid-Afrikaanse Koördinaatsisteem word in die kantlynne aangegee deur kort swart strepe, 10 000 meter van mekaar, met koördinaatswaardes in eenheids van 10 000 meter in blou.

Hoogtes is in Engelse Voet op grondhoogte. Elevations are in English Feet to ground level.

The grid lines of the South African Co-ordinate System are indicated in the margin by short black ticks at 10 000 metre intervals, with co-ordinate values in units of 10 000 metres in blue.

Gauss se Konforme Projeksie, Middellandse 20° Oos. Clark's 1880 Sferoid. Gauss Conform Projection, Central Meridian 20° East, Clark's 1880 Spheroid.

INDEKS VAN VELLE INDEX TO SHEETS



KOPIEREG COPYRIGHT

3028BB LEHLOHONOLO EERSTE UITGAWE FIRST EDITION