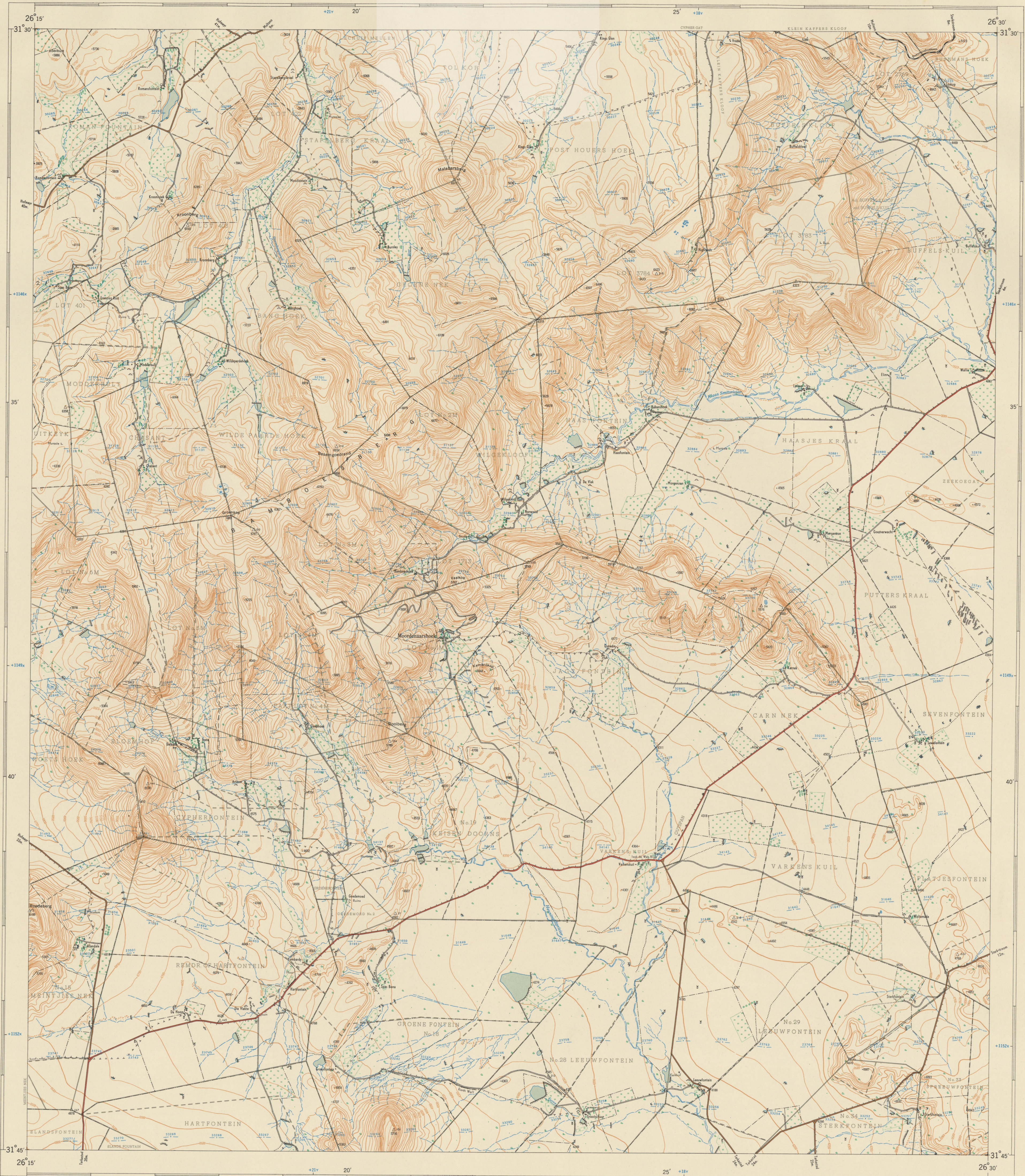


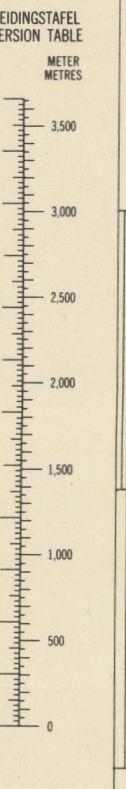
University of Fort Hare
3126CB MOORDENAARSHOEK

1:50,000 SUID-AFRIKA
SOUTH AFRICA

Verwys na hierdie Kaart as SUID-AFRIKA 1:50,000 Vbl 3126CB MOORDENAARSHOEK
Refer to this Map as SOUTH AFRICA 1:50,000 Sheet EERSTE UITGAWE FIRST EDITION



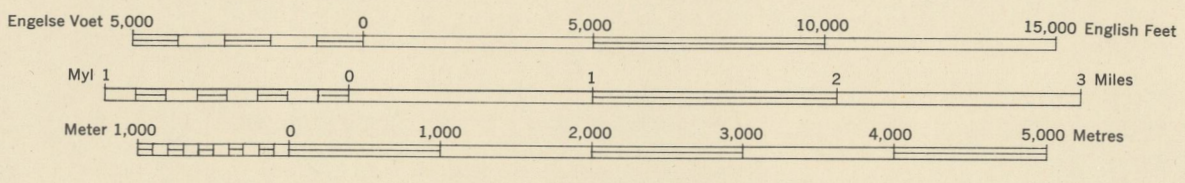
Magnetiese afwijking (1925) op afstand van west 27° 25' West van Wervellood. Jaarlijkse verandering 4" Westwaarts.
Magnetic declination (1925) on a distance of west 27° 25' West of true North. Annual change 4" Westwards.



Lugfotografie 1943. Opgemaak in 1953 en geteken in 1957 deur die Driehoekmetingskantoor.
Air Photography 1943. Surveyed in 1953 and drawn in 1957 by the Trigonometrical Survey Office.

T.S.O. 200/1202

1:50,000

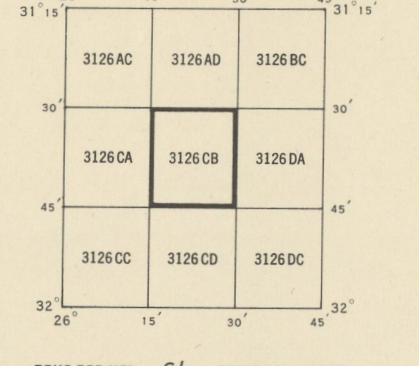


Die ruitlyn van die Suid-Afrikaanse Koordinaatstelsel word in die kantreunings aangetoon deur kort swart lyne, 30,000 Engelse Voet van mekaar, met koördinaatwaardes in eenhede van 10,000 Engelse Voet in blou.

Alle hoogtes word in Engelse Voet tot op grondhoogte aangegeef. All heights are given in English Feet to ground level. Gausse Konforme Projeksie, Middellandse 27° Oos. Gauss Conform Projection, Central Meridian 27° East.

The grid lines of the South African Co-ordinate System are indicated in the margin by short black lines at 30,000 English Feet intervals, with co-ordinate values in units of 10,000 English Feet in blue.

INDEKS VAN VELLE INDEX TO SHEETS



Kadastrale inligting verskaf deur die Landmeter-generaal, Kaap.
Original Farms.
Subdivisions.

Kadastrale inligting verskaf deur die Landmeter-generaal, Kaap.
Original Farms.
Subdivisions.

PRYS PER VEL 6/- PRICE PER SHEET
KOPIEREG COPYRIGHT

VERKLARING REFERENCE

Internasionale Grense	International Boundaries
Provisoriale Grense	Provisional Boundaries
Veelvoudige Spoorlyne	Multiple Track Railways
Eenheidspoortlyne	Single Track Railways
Elektrifiseerde Spoorlyne	Electric Railways
Smalpoortlyne	Narrow Gauge Railways
Suikerriet- en Mineralepoortlyne	Cane and Mineral Tracks
Nasionale Paale	Main Roads
Hoofpaale	Secondary Roads
Sekondêre Paale	Other Roads
Ander Paale	Tracks and Footpaths
Doewe Paale en Voetpaale	Power Lines
Kraglyne	Telephone and Telegraph Lines
Telefoon- en Telegraaflyne	Post and Telegraph Offices, Police Stations and Posts, Stores, Hotels, Schools and Places of Worship
Post- en Telegraafkantore, Polisie-stasies en -poste, Winkels, Hotelle, Skole en Plekke van Aanbidding	Lighthouses and Marine Lights
Vuurtoerings en Steewarttelle	Sewerage
Sewerartbakkens	Trig. Beacons (Number to right and height below)
Driehoeksbakkens (Nommer regs en hoogte onder)	

VERKLARING REFERENCE

Magnetiese Stasies	Magnetic Stations
Naturelle hutte	Native Huts
Vee- en Vendusielokale	Cattle Kraals and Stock Pens
Dipbakke	Dipping Tanks
Windpompe	Windmills
Kiljoure	Excavations
Groedbevestigingswal	Stone Walls
Uitgrawings	Perennial Water
Standhoudende Water	Non-perennial Water
Nie-standhoudende Water	Dry Pans
Droë Panne	Fountains, Springs, Waterholes and Wells
Fonteinne, Watergate en Putte	Marshes, Swamps and Vies
Moerasse en Vies	Poplars
Popelne	Photo Centres
Fotomiddelpeunte	Prominent Rock Outcrops
Uitstaande Klipbakkens	Terraces
Terrasse	Cultivated Lands
Bewerkte Lande	Orchards and Vineyards
Boorde en Wingerde	Avenues, Windbreaks and Hedges
Lane, Windkerms en Heininge	

Gedruk in die Unie van Suid-Afrika deur die Staatsdrukkery, Pretoria, 1958.
Printed in the Union of South Africa by the Government Printer, Pretoria, 1958.

3126CB MOORDENAARSHOEK EERSTE UITGAWE
FIRST EDITION