

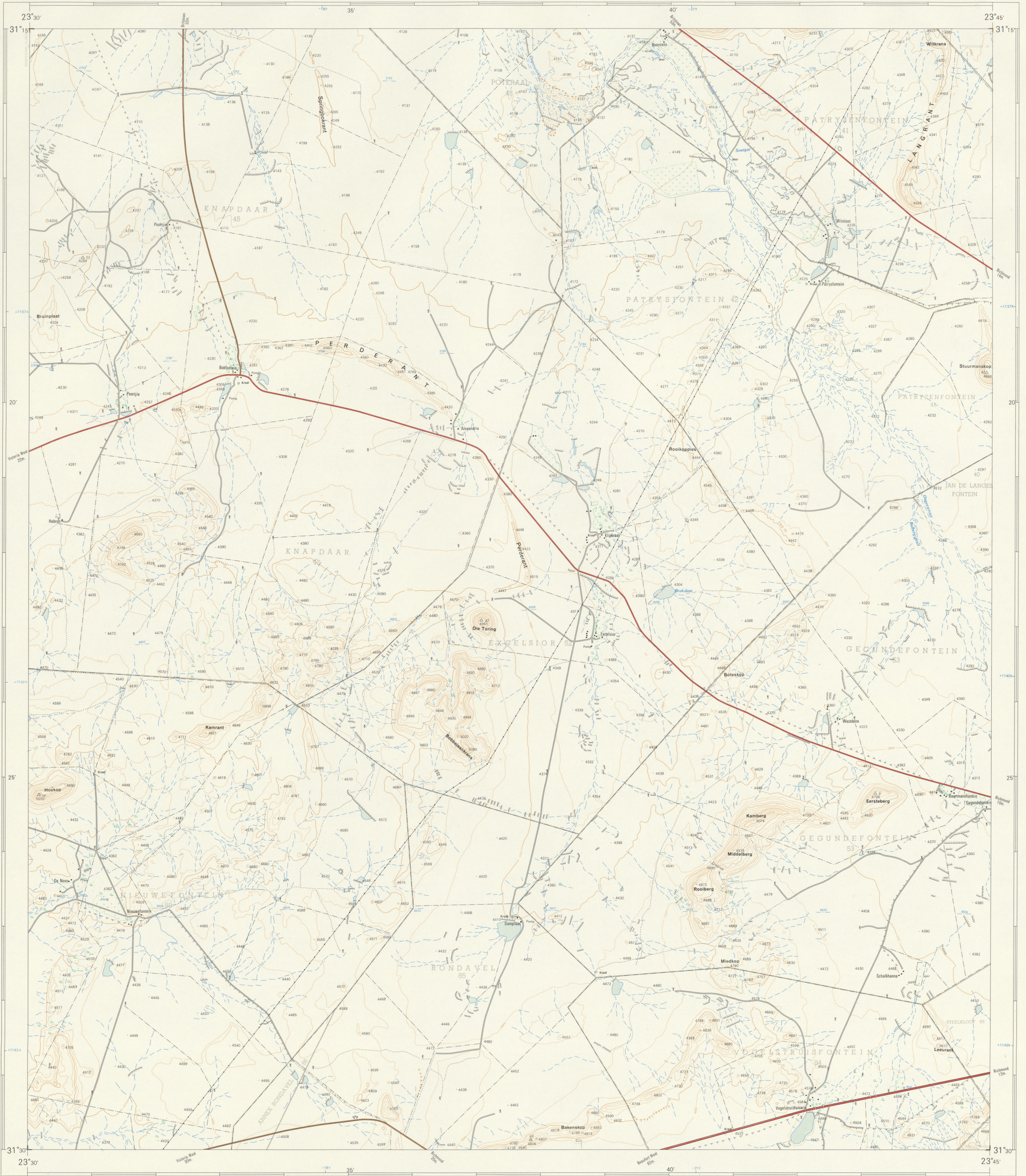


University of Fort Hare
Together in Excellence

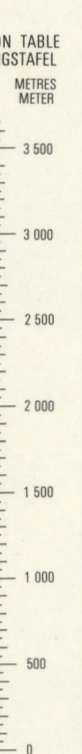
1:50 000 SOUTH AFRICA
SUID-AFRIKA

3123BC BOKFONTEIN

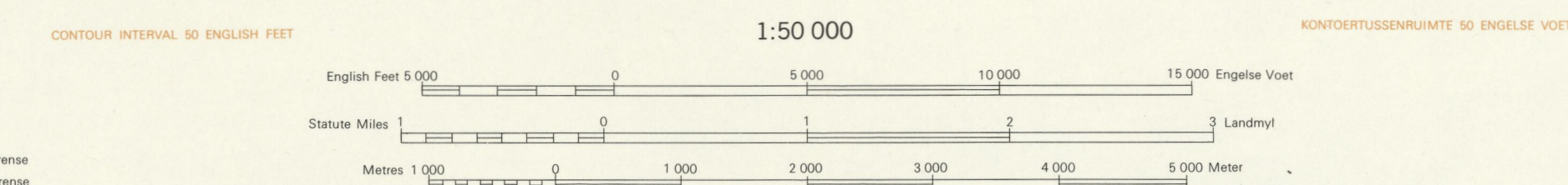
Refer to this Map as SOUTH AFRICA 1:50 000 Sheet
Verwys na hierdie Kaart as SUID-AFRIKA 1:50 000 Vel
3123BC BOKFONTEIN
FIRST EDITION EERSTE UITGAWE



Grondreël magneet deviasie 22° 3' West
 van Wêreld Nodus (1970-0). Grondreël parallel
 verandering 2° 11' 15" (1960-1965)
 Mean magnetic declination 22° 3' West
 of True North (1970-0). Groundreël parallel
 verandering 2° 11' 15" (1960-1965)

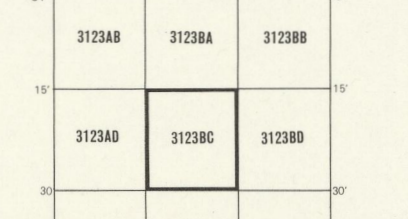


REFERENCE	VERKLARING	REFERENCE	VERKLARING
International Boundaries	Internasionale Grense	Magnetic Stations and Ground Signs	Magnetiese Stasies en Grondtekens
Provincial Boundaries	Provinsiale Grense	Huts	Hutte
Multiple Track Railways	Veeelvoudige Spoorlyne	Monuments	Monumente
Single Track Railways	Enkelspoorlyne	Dipping Tanks	Dipbakke
Electrified Railways	Geelektreiseerde Spoorlyne	Windmills	Windpompe
Narrow Gauge Railways	Smalspoorlyne	Walls	Mure
Service Railway	Diensspoorlyne	Anti-erosion Walls	Grondbeweringswalle
National Roads	Nasionale Paase	Excavations	Uitgrawings
Main Roads	Hooftpaase	Perennial Water	Standhoudende Water
Secondary Roads	Sekondêre Paase	Non-perennial Water	Nie-standhoudende Water
Other Roads	Ander Paase	Dry Pans	Droë Pannes
Tracks and Footpaths	Doonweg Paase en Voetspaaie	Springs, Waterholes and Wells	Fonteinne, Watergate en Putte
Power Lines	Kraglyne	Marshes, Swamps and Vleis	Moerasse en Vleis
Telephone Lines	Telefoonlyne	Pinelands	Pylyne
Post Offices, Police Stations and Posts.	Poskantore, Polisieostasies en -poste.	Photo Centres	Fotomidelpunte
Stores, Hotels, Schools and Places of Worship	Winkels, Hotelle, Skole en Plekke van Aandbidding	Prominent Rock Outcrops	Prominente Klippanne
Lighthouses and Marine Lights	Vuurtoringe en Seewaartligte	Terraces	Terrasse
Marine Beacons	Seewaartbaken	Cultivated Lands	Beweekte Lande
Trig Beacons (Number to right and height below)	Trig Baken (Nommer regs en hoogte onder)	Orchards and Vineyards	Boorde en Wingerde
		Trees and Bush	Bome en Bos



The grid lines of the South African Co-ordinate System are indicated in the margin by short black ticks at 30 000 English Foot intervals, with co-ordinate values in units of 10 000 English Feet in blue.
 Die rulle van die Suid-Afrikaanse Koördinaatsistiem word in die kante van die kaart deur kort swart strepe 30 000 Engelse Voet van mekaar, met koördinaatwaarde in eenhede van 10 000 Engelse Voet in blou.

Gauss Conform Projection, Central Meridian: 22° East, Clark's 1880 Spheroid
 Gauss se Konforme Projeksie, Middelliniedraan: 22° Oos, Clark's 1880 Sferoid



REFERENCE	VERKLARING	REFERENCE	VERKLARING
Castell Information supplied by the Surveyor-General, Cape	Original Farms	Original Farms	Original Farms

PRICE PER SHEET 60c PRYS PER VEL
 COPYRIGHT KOPIEREG

3123BC BOKFONTEIN FIRST EDITION EERSTE UITGAWE