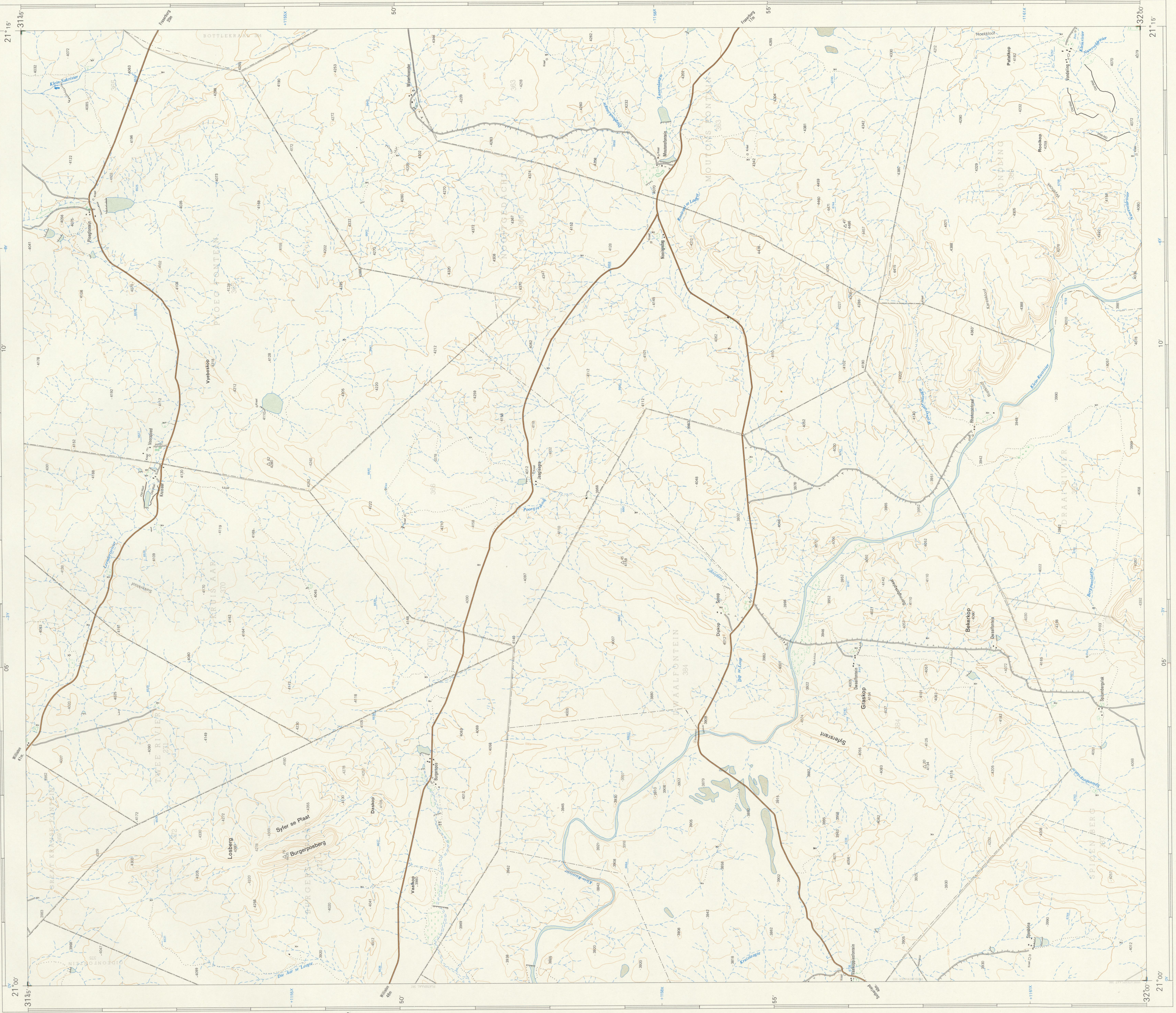


1 : 50 000 SOUTH AFRICA  
SUID-AFRIKA

3121CC JAAGLEEGTE

3121CC JAAGLEEGTE  
FIRST EDITION  
FIRST EDITION



Air Photography 1982. Leds No. 482102. Surveyed in 1968 and drawn in 1970 by the Topographical Survey Office  
Landscape 1982. (Leds No. 482102). Digitized in 1970 in grasses in 1970 for the Ordnance Survey Office  
T.S.O. 3004/69

**REFERENCE VERKLARING**

International Boundaries	— — — — —
Provincial Boundaries	— — — — —
Local Government Boundaries	— — — — —
Single Track Railways	— — — — —
Electricity Lines	— — — — —
Narrow Gauge Railways	— — — — —
Service Railways	— — — — —
National Roads	— — — — —
Other Roads	— — — — —
Trails and Footpaths	— — — — —
Power Lines	— — — — —
Telephone Lines	— — — — —
Police Stations and Posts	— — — — —
Stores, Hotels, Schools and	— — — — —
Pieces of Warship	— — — — —
Lighthouses and Marine Lights	— — — — —
Marine Buoys	— — — — —
Trig. Stations (Number to right and height below)	— — — — —

CONTOUR INTERVAL 60 ENGLISH FEET  
1:50 000

English Feet 0 500 1 000 2 000 3 000 4 000 5 000  
Statute Miles 0 1 2 3 4 5

KONTURINTERVALE 60 ENDELE VOT  
1:50 000

15 000 English Feet  
3 Lanwy

Elevations are in English Feet to ground level  
Hoogtes is in English Feet to ground level  
The grid lines of the South African Co-ordinate System are indicated in the  
margin by short lines at 30 000 English Feet intervals, with co-ordinate  
values in units of 10 000 English Feet to the  
Gaas Co-ordinate Projection. Gauss Meridian 21° East. Clark's 1880 Spheroid  
Gaas se Koördinatsprojeksie. Modusmeridiaan 21° Oos. Clark's 1880 Sferoid

**INDEX TO SHEETS INDEKS VAN VELLE**

3120B	3121A	3121B
3120C	3121C	3121D
3120D	3121D	3121E

Published in the Republic of South Africa by the Government Printer, Pretoria 1971.  
Uitgegeven in die Republiek van Suid-Afrika deur die Staatsdrukker, Pretoria 1971.

**REFERENCE VERKLARING**

Magnetic Stations and Ground Signs	— — — — —
Huts	— — — — —
Monuments	— — — — —
Dipping Tanks	— — — — —
Waterfalls	— — — — —
Excavations	— — — — —
Perennial Water	— — — — —
Non-perennial Water	— — — — —
Springs, Waterholes and Wells	— — — — —
Marshes, Swamps and Vales	— — — — —
Pipelines	— — — — —
Photo Centres	— — — — —
Prominent Rock Outcrops	— — — — —
Coloured Lands	— — — — —
Orchards and Vineyards	— — — — —
Trees and Bush	— — — — —
Magnetic Stations and Ground Signs	— — — — —
Monuments	— — — — —
Wingspans	— — — — —
Munitions	— — — — —
Excavations	— — — — —
Perennial Water	— — — — —
Non-perennial Water	— — — — —
Springs, Waterholes and Wells	— — — — —
Marshes, Swamps and Vales	— — — — —
Pipelines	— — — — —
Photo Centres	— — — — —
Prominent Rock Outcrops	— — — — —
Coloured Lands	— — — — —
Orchards and Vineyards	— — — — —
Trees and Bush	— — — — —

3121CC JAAGLEEGTE  
FIRST EDITION  
ERSTE UITGAWE