



Candidate's attention: Attention: 25.2° W of True North (1964.0). Mean annual change: 1" Westward (1963-1961).
 Candidate's attention: Attention: 25.2° W of True North (1964.0). Mean annual change: 1" Westward (1963-1961).

CONVERSION TABLE
 METRES
 METERS
 1500
1000
500
0
500
1000
1500

An Photograph 1957. Surveyed and drawn in 1964 by the Topographical Survey Office.
Lugfoto 1957. Opgeneem en geteken in 1964 deur die Driehoeksmetingkantoor.
T.S.O. 200/2142

Contour Interval 100 English Feet.

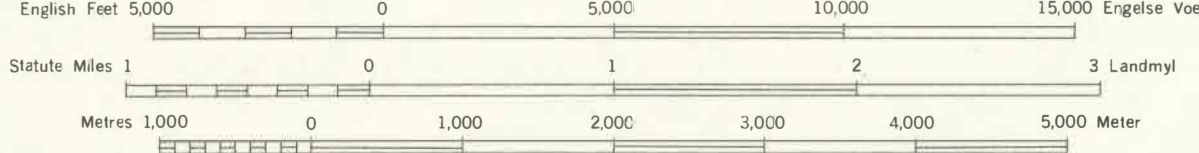
1:50,000

Maatstaf 1:50,000

Printed and Published in the Republic of South Africa by the Government Printer, Pretoria, 1965.
Gedruk en Uitgegee in die Republiek van Suid-Afrika deur die Staatsdrukker, Pretoria, 1965.

REFERENCE VERKLARING

International Boundaries.....	Internasionale Grense.....
Provincial Boundaries.....	Provinsiale Grense.....
Multiple Track Railways.....	Veelvoudige Spoorlyne.....
Single Track Railways.....	Enkelspoorlyne.....
Electrified Railways.....	Geëlektrifiseerde Spoorlyne.....
Narrow Gauge Railways.....	Smalspoorlyne.....
Service, Cane and Mineral Railways.....	Diens-, Suikerriet- en Mineralspoorlyne.....
National Roads.....	Nasionale Paaie.....
Main Roads.....	Hoofpaaie.....
Secondary Roads.....	Sekondêre Paaie.....
Other Roads.....	Ander Paaie.....
Tracks and Footpaths.....	Dowwe Paaie en Voetpaaie.....
Power Lines.....	Kraglyne.....
Telephone and Telegraph Lines.....	Telefoon- en Telegraaflyne.....
Post and Telegraph Offices, Police Stations and Posts, Stores, Hotels, Schools and Places of Worship.....	Post- en Telegraafkantore, Politie-stasies en poste, Winkels, Hotelle, Skole en Plekke van Aanbidding.....
Lighthouses and Marine Lights.....	Vuurtoerings en Seewaartligte.....
Trig. Beacons (number to right and height below).....	Driehoeksbaken (nommer regs en hoogte onder).....



The grid lines of the South African Co-ordinate System are indicated in the margin by short black lines at 10,000 English Feet intervals, with co-ordinate values in units of 10,000 English Feet in blue.

All heights are given in English Feet to ground level.
Alle hoogtes word in Engelse Voet tot op grondvlak aangegee.
Geos Conform Projection, Central Meridian 19° East, Gauss se Konforme Projeksie, Middelliniede 19° Oos.

Die ruitlyn van die Suid-Afrikaanse Koordinatstelsel word in die kantelingsmargin deur kort swart lyne 10,000 Engelse Voet van mekaar met koördinaatwaardes in eenhede van 10,000 Engelse Voet in blou.

INDEX TO SHEETS INDEKS VAN VELLE

3119C0	3119C1	3119C2
3119B8	3119BA	3119B8
3119A0	3119A1	3119A2

REFERENCE VERKLARING

Magnetic Stations and Ground Signs.....	Magnetiese Stasies en Grondtekens.....
Bantu huts.....	Bantuhutte.....
Monuments.....	Monumente.....
Dipping Tanks.....	Dipbakke.....
Windmills.....	Windpompe.....
Wells.....	Mure.....
Anti-erosion Walls.....	Grondbewaringswalle.....
Excavations.....	Opgrawings.....
Perennial Water.....	Standhoudende Water.....
Non-perennial Water.....	Nie-standhoudende Water.....
Dry Pans.....	Droë Panne.....
Fountains, Springs, Waterholes and Wells.....	Fonteinne, Watergatse en Putte.....
Marshes, Swamps and Vlees.....	Moerasse en Vlees.....
Pipelines.....	Pyplyne.....
Photo Centres.....	Fotomidelpunte.....
Prominent Rock Outcrops.....	Uitspringende Klipbanke.....
Terraces.....	Terrasse.....
Cultivated Lands.....	Bewerkte Lande.....
Orchards and Vineyards.....	Boorde en Wingerde.....
Trees and Bush.....	Bome en Bos.....

PRICE PER SHEET 60c 90c PER VEL
COPYRIGHT KOPIEREG