

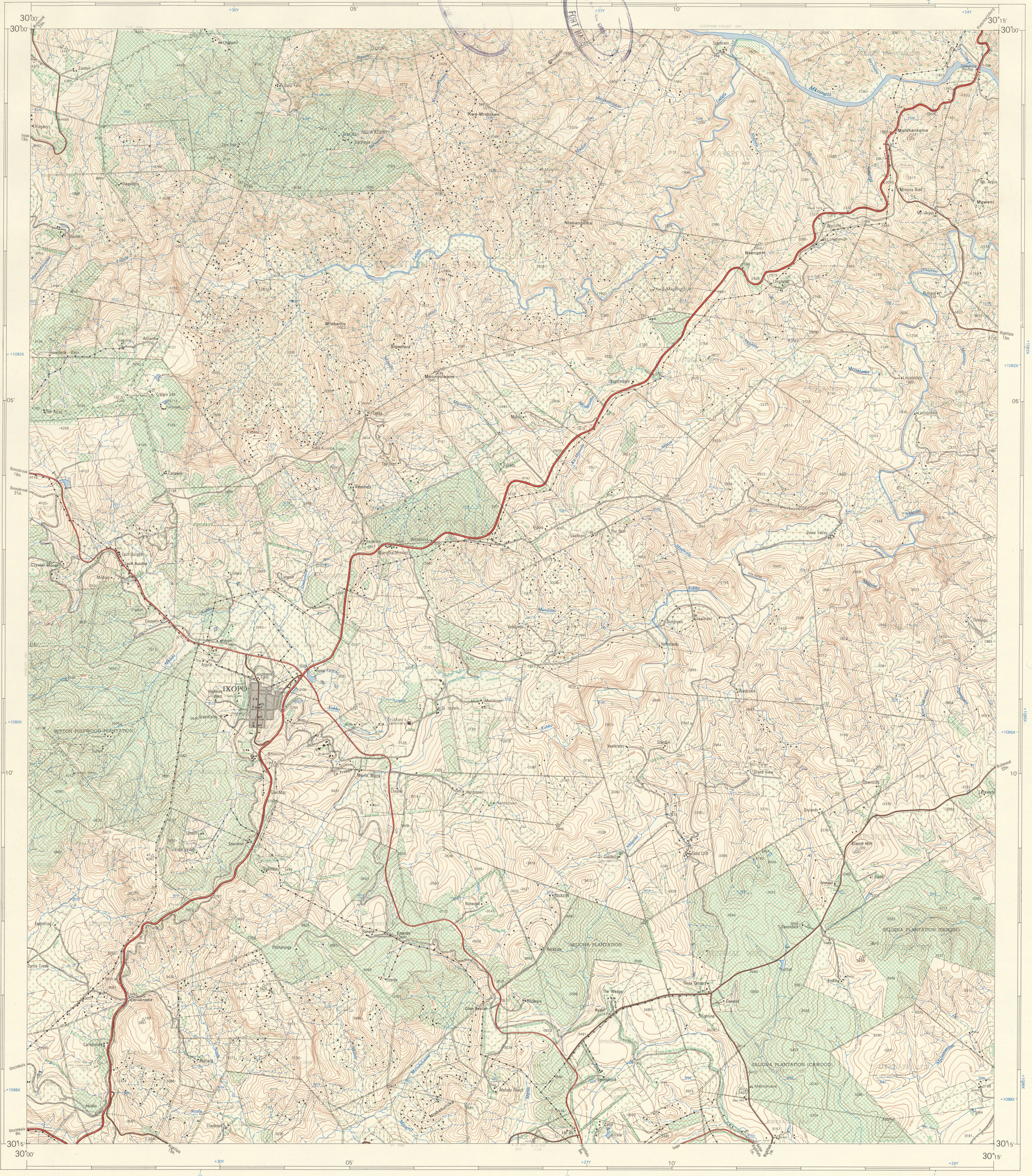


University of Fort Hare
Together in Excellence

1:50 000 SOUTH AFRICA
SUID-AFRIKA

3030AA IXOPO

Refer to this Map as SOUTH AFRICA 1:50 000 Sheet 3030AA IXOPO
Verwys na hierdie Kaart as SUID-AFRIKA 1:50 000 Vel 3030AA IXOPO
FIRST EDITION: EERSTE UITGAWE



Air Photography 1959 (Job No. 443/59). Surveyed in 1968 and drawn in 1970 by the Trigonometrical Survey Office
Lugfoto 1959 (Taak No. 443/59). Opgeneem in 1968 en geteken in 1970 deur die Dreinhoekmetingskantoor.

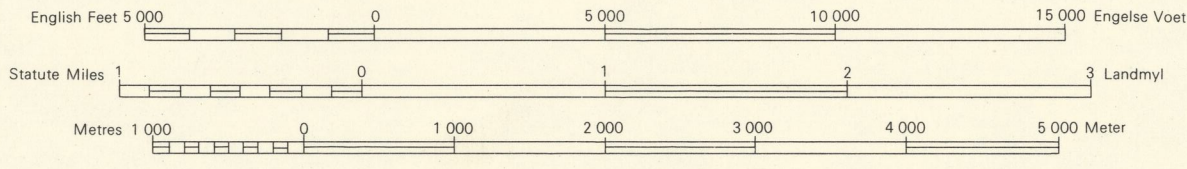
CONTOUR INTERVAL 50 ENGLISH FEET

1:50 000

KONTOERTUUSSENRIJTE 50 ENGELE VOET

Reprinted and published by the Government Printer, Private Bag X85, Pretoria 1980
Herdruk en uitgegee deur die Staatsdrukker, Private Bag X85, Pretoria 1980.

© State Copyright Staatsouteursreg



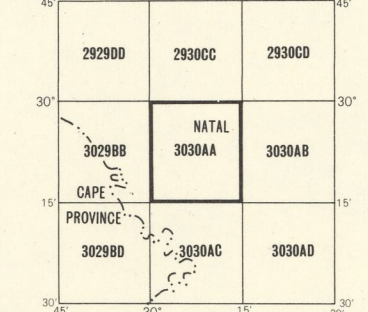
The grid lines of the South African Co-ordinate System are indicated in the margin by short black ticks at 30 000 English Feet intervals, with co-ordinate values in units of 10 000 English Feet in blue.

Elevations are in English Feet to ground level
Hoogtes is in Engelse Voet op grondhoogte

Die ruitlyne van die Suid-Afrikaanse Koordinatstelsel word in die kante van die kaart deur kort swart strepe 30 000 Engelse Voet van mekaar, met koördinaatwaardes in eenhede van 10 000 Engelse Voet in blou, aangedui.

Gauss Conform Projection, Central Meridian 31° East, Clark's 1880 Spheroid
Gauss se Konforme Projeksie, Middelleraans 31° Oos, Clark's 1880 Stelsel

INDEX TO SHEETS INDEKS VAN VELLE



REFERENCE	VERKLARING
International Boundaries	Internasionale Grense
Provincial Boundaries	Provinsiale Grense
Multiple Track Railways	Veelroetes Spoorlyne
Single Track Railways	Enkelroetes Spoorlyne
Electrified Railways	Geëlektrifiseerde Spoorlyne
Narrow Gauge Railways	Smalroetes Spoorlyne
Service Railways	Diensroetes Spoorlyne
National Roads	Nasionale Paasie
Main Roads	Hoofpaasie
Secondary Roads	Sekondêre Paasie
Other Roads	Ander Paasie
Tracks and Footpaths	Dowwe Paasie en Voetpaasie
Power Lines	Diensroetes Spoorlyne
Telephone Lines	Telefoonlyne
Post Offices, Police Stations and Posts	Poskantore, Polisieostasies en poste
Stores, Hotels, Schools and Places of Worship	Winkels, Hotelle, Skole en Plekke van Aanbidding
Lighthouses and Marine Lights	Vuurtorings en Seevaartligte
Marine Beacons	Seevaartbaken
Trig. Beacons (Number to right and height below)	Trig. Baken (Nommer regs en hoogte onder)

REFERENCE	VERKLARING
Magnetic Stations and Ground Signs	Magnetiese Stasies en Grondtekens
Huts	Hutte
Monuments	Monumente
Dipping Tanks	Dipbakke
Windmills	Windpompe
Walls	Mure
Anti-erosion Walls	Grondbewaringswalle
Excavations	Uitgrawings
Perennial Water	Standhoudende Water
Non-perennial Water	Nie-standhoudende Water
Dry Pans	Droë Pannes
Springs, Waterholes and Wells	Fonteinne, Watergate en Putte
Marshes, Swamps and Vleis	Moerasse en Vleis
Pipelines	Pyplyne
Photo Centres	Fotomiddelpeunte
Prominent Rock Outcrops	Prominente Klippanke
Terraces	Terrasse
Cultivated Lands	Bewerkte Lande
Orchards and Vineyards	Borde en Wingerde
Trees and Bush	Bome en Bos

Cadastral information supplied by the Surveyor-General, Natal
Oorspronklike Plaaie

Kadastrale inligting verskaf deur die Landmeter-generaal, Natal
Oorspronklike Plaaie

3030AA IXOPO FIRST EDITION EERSTE UITGAWE