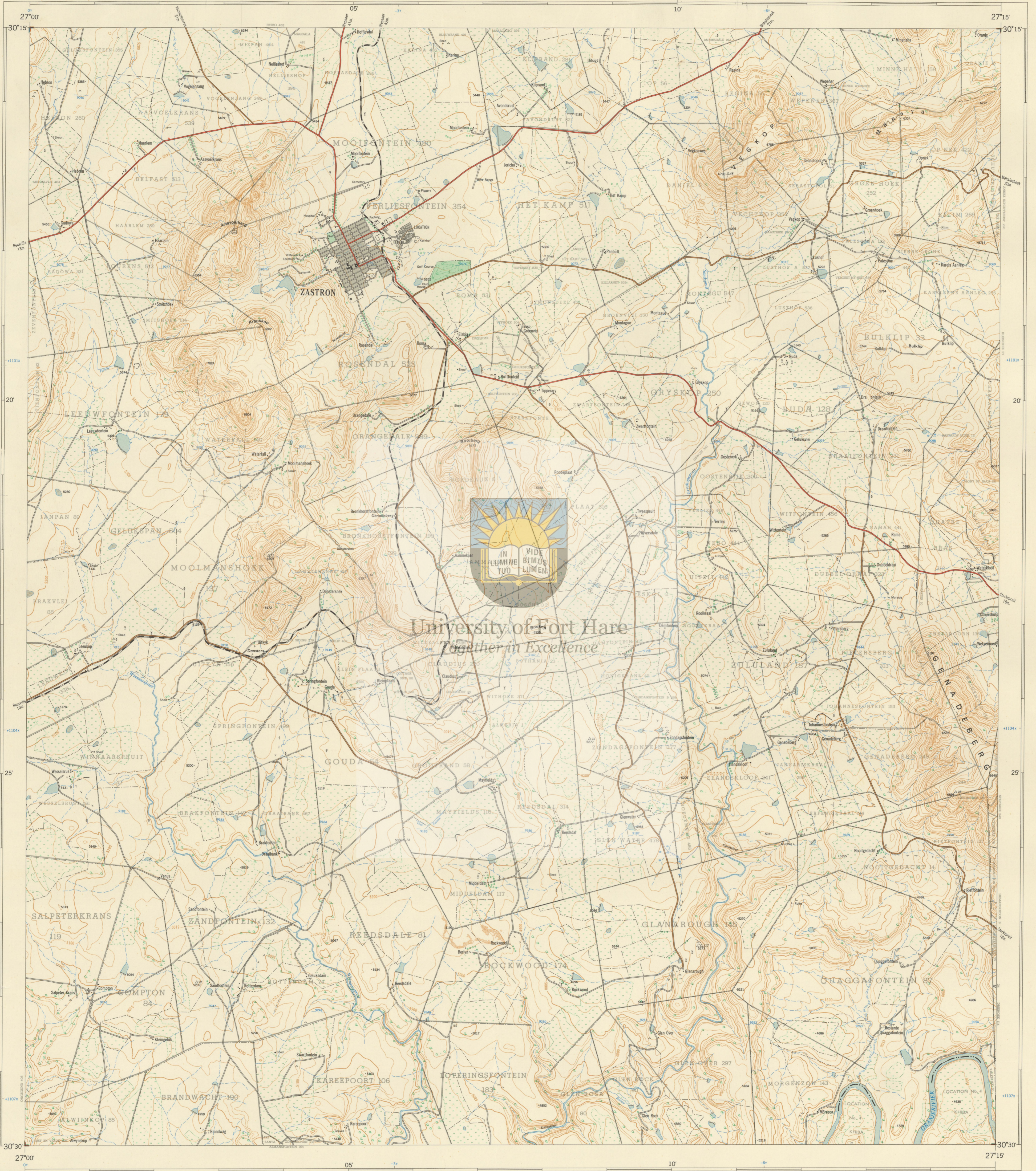


1:50,000 SOUTH AFRICA
SUID-AFRIKA

3027AC ZASTRON

Refer to this Map as SOUTH AFRICA 1:50,000 Sheet 3027AC ZASTRON
Verwys na hierdie Kaart as SUID-AFRIKA 1:50,000 Vel 3027AC ZASTRON
FIRST EDITION EERSTE UITGawe



University of Fort Hare
Together in Excellence

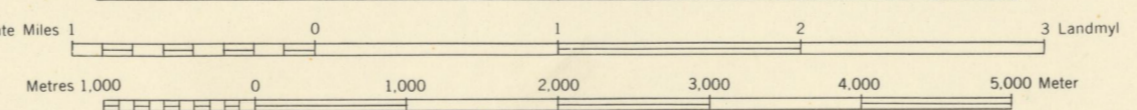
Air Photography 1952 (Job No. 381/57). Surveyed in 1955 and drawn in 1957 by the Trigonometrical Survey Office.
Lugfoto's 1952 (Taak No. 381/57). Opgeneem in 1955 en geteken in 1957 deur die Driehoekmetingskantoor.

T.S.O. 200/2947

1:50,000

Printed and Published in the Republic of South Africa by the Government Printer, Pretoria, 1957.
Gedruk en Uitgegeen in die Republiek van Suid-Afrika deur die Staatsdrukker, Pretoria, 1957.

Contour interval 50 English Feet English Feet 5,000 0 5,000 10,000 15,000 Engelse Voet Kontourtussenruimte 50 Engelse Voet



The grid lines of the South African Co-ordinate System are indicated in the margin by short black lines at 30,000 English Feet intervals, with co-ordinate values in units of 10,000 English Feet in blue.

All heights are given in English Feet to ground level.
Alle hoogtes word in Engelse Voet tot op grondhoogte aangegeef.

Die ruitlyn van die Suid-Afrikaanse Koordinatstelsel word in die kantlynne aangegeef deur kort swart lynne 30,000 Engelse Voet van mekaar, met koördinaatwaardes in eenhede van 10,000 Engelse Voet in blou.

REFERENCE VERKLARING

International Boundaries	Internasionale Grense
Provincial Boundaries	Provinsiale Grense
Multiple Track Railways	Veelvouige Spoorlyne
Single Track Railways	Eenwouige Spoorlyne
Electrified Railways	Getelegrafiseerde Spoorlyne
Narrow Gauge Railways	Smalspoorlyne
Service Railways	Diensspoorlyne
National Roads	Nasionale Paaie
Main Roads	Hoofpaaie
Secondary Roads	Sekondêre Paaie
Other Roads	Andere Paaie
Tracks and Footpaths	Dowwe Paaie en Voetpaaie
Power Lines	Kraglyne
Telephone and Telegraph Lines	Telefoon- en Telegraaflyne
Post and Telegraph Offices, Police Stations and Posts, Stores, Hotels, Schools and Places of Worship	Pos- en Telegraafkantore, Polisie-stasies en poste, Winkel, Hotelle, Skole en Plekke van Aanbidding
Lighthouses and Marine Lights	Vuurtorings en Seewaartligte
Marine Beacons	Seewaartligte
Trig. Beacons (Number to right and height below)	Driehoeksbakens (Nommer regs en hoogte onder)

Cadastral information supplied by the Survey-General, O.F.S., and the Department of Banks Administration and Development.
Ligging van Lande en Plaaslike Administrasie en Ontwikkeling.

INDEX TO SHEETS INDEKS VAN VELLE

302788	302789	302790
302789	302790	302791
302790	302791	302792

PRICE PER SHEET 60c PRYS PER VELLE 60c
COPYRIGHT KOPIEREG

REFERENCE VERKLARING

Magnetic Stations and Ground Signs	Magnetiese Stasies en Grondtekens
Huts	Hutte
Monuments	Monumente
Dipping Tanks	Dipbakke
Windmills	Windpompe
Walls	Mure
Anti-erosion Walls	Grondbewingswalle
Excavations	Uitgrawings
Perennial Water	Standhoudende Water
Non-perennial Water	Nie-standhoudende Water
Dry Pans	Droë Pannas
Fountains, Springs, Waterholes and Wells	Fonteinne, Watergate en Putte
Marshes, Swamps and Vlees	Moerasse en Vlees
Pipelines	Pyplyne
Photo Centres	Fotomiddelplekke
Permanent Rock Outcrops	Uitstaende Klippanne
Terraces	Terrasse
Cultivated Lands	Bewerkte Lande
Orchards and Vineyards	Borde en Wingerde
Trees and Bush	Bome en Bos

3027AC ZASTRON FIRST EDITION EERSTE UITGawe