



KLAARFONTEIN 3126CA

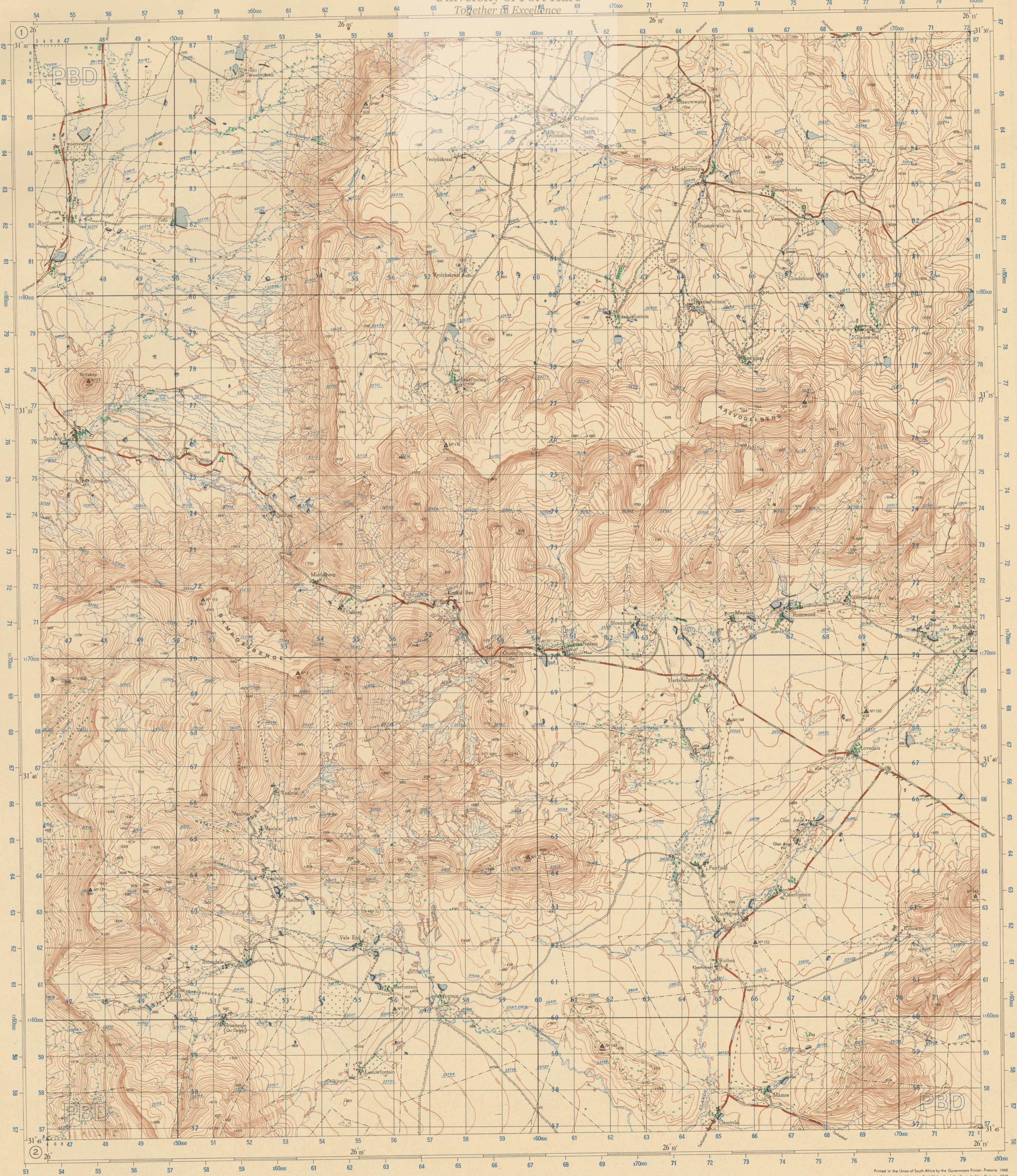
University of Port Hare
Together in Excellence

ZONE N 1:50,000 SOUTH AFRICA
SONE P SUID-AFRIKA

ZONE
SONE P

Refer to this Map as SOUTH AFRICA 1:50,000 Sheet KLAARFONTEIN 3126CA
Verwys na hierdie Kaart as SUID-AFRIKA 1:50,000 vel

FIRST EDITION EENSTE UITGAWE

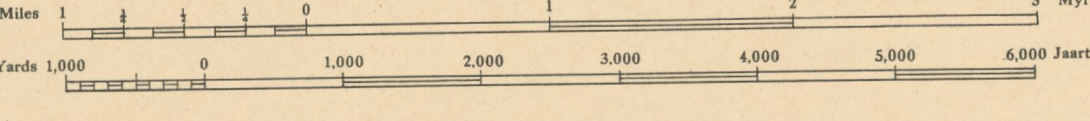


Magnetic variation in middle of sheet 20'10" West of True North.
Annual change 1" Eastwards.
Grid North 23'2" East of True North at centre of sheet.

The grid bearing of magnetic north at the centre of the sheet is 337'2".
At January 1948, 137'2" here is getting west at rate of 1" per year.

Surveys in 1944 and drawn by the Topographical Survey Office, 1947.
Ongesien in 1944 en geteken deur die Topografiese Kantoor, 1947.
T.S.O. 200/660

1:50,000



REFERENCE	VERKLARING
Boundaries, International	Grense, Internasionale
Provincial	Provinsiale
Railways, Double	Spoorwee, Dubbelspoor
Electrified	Geëlektrifiseer
Single	Enkelspoor
Narrow Gauge	Smalspoor
Mineral, Sugar Cane, etc.	vir Minerale, Suikerriet, ens.
Roads, National	Paasie, Nasionale
Main	Hoof-
Secondary	Sekondêre
Other	Ander
Tracks and Footpaths	Dowwepaie en Voetspaie
Lighthouses, National Monuments	I Vuurtoringe, Nasionale Monumente
Telegraph or Telephone Lines	Telegraaf- of Telefoonlynne
Power Lines	Kraglynne
Bench Marks (Heights to nearest foot)	Hoogtemerke (Hoogtes tot naaste voet)
Trig. Beacons (Heights in Eng. Feet)	Trig. Bakens (Hoogtes in Eng. Voet)
(Ground Level)	(Grondevlak)
Police Stations, Stores, Hotels	Polisiestasies, Winkels, Hotelle
Post or Telegraph Offices	Pos- of Telegraafkantore
Native Huts, Cattle Kraal	Kaffertrouee, Veekraal
Spot Heights (Eng. Feet)	Hoogte Punte (Eng. Voet)
Quarries, Sandpits	Steenegroewe, Sandgate
Mine Dumps	Mynhlope
Krans	Krans
Coastal Rocks, Rock Outcrops	Kuurotse, Rotsdagsome
Fence	Draad

INDEX TO ADJOINING SHEETS INDEKS VIR BYGAANDE VELLE

INCIDENCE OF LETTERS ON GRID LETTERVOORKOMS OP VIERKANTENET

DATA FOR TRANSFORMATION OF CO-ORDINATES FROM ADJOINING GRID ZONE

Change points

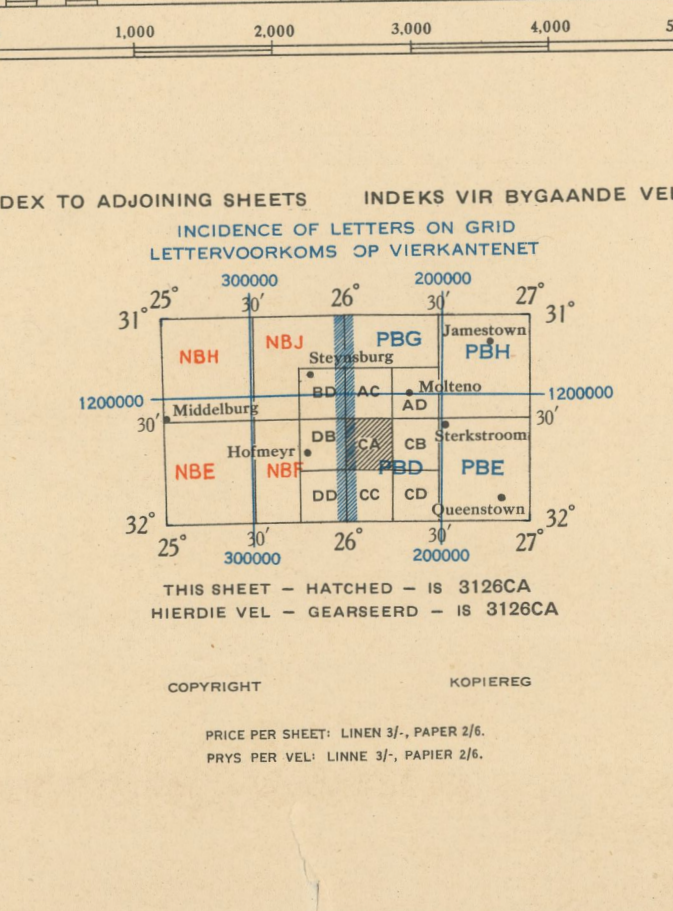
① (N.W. Corner of Sheet)	353903 Yds.	1186599 Yds.	146097 Yds.	1186999 Yds.
② (S.W. Corner of Sheet)	353625 Yds.	1156683 Yds.	146375 Yds.	1156683 Yds.

Angle of swing, Adjoining Grid to Face Grid = $1^{\circ}02'56'' = -0183$ radians.

$dE_2 = dE_1 - 0183 dN_1$
 $dN_2 = dN_1 + 0183 dE_1$

THIS SHEET - HATCHED - IS 3126CA
 HIERDIE VEL - GEARBEED - IS 3126CA

PRICE PER SHEET, LINEN 3f., PAPER 2f.
 PRYS PER VEL, LINNE 3f., PAPIER 2f.



REFERENCE	VERKLARING
Rivers, perennial	Riviere, standhoudend
non-perennial	nie standhoudend
Marshes or Vleis	Moerasse of Vleis
Pans, Lakes	Panne, Mere
Weirs, Pipelines (P), Furrows	Studamme, Pyplyne (P), Vore
Dams, Canals	Damme, Kanale
Fountains, Waterholes or Wells	Fonteinne, Watergate of Putte
Wind or Motor Pumps	Wind- of Motorpompe
Photo Centres	Fotosentrum
Sand and Sand Dunes	Sand en Sandduine
Eroded Areas	Verspoelde Gebiede
Contours	Hoogtelynne
Cultivated Lands	Bewerkte Lande
Orchards, Vineyards	Boorde, Wingerde
Plantations	Plantasies
Windbreaks and Avenues	Windsutte en Lane
Scattered Bush, Bushveld	Verspreide Bosse, Bosveld
Dense Bush and Forests	Digte Bos en Woude
Cactus	Kaktus

Printed in the Union of South Africa by the Government Printer, Pretoria, 1948.
Gedruk in die Unie van Suid-Afrika deur die Staatsdrukker, Pretoria, 1948.