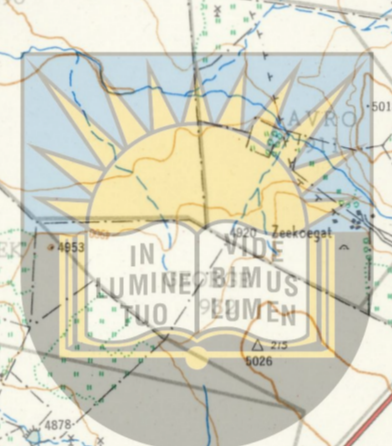
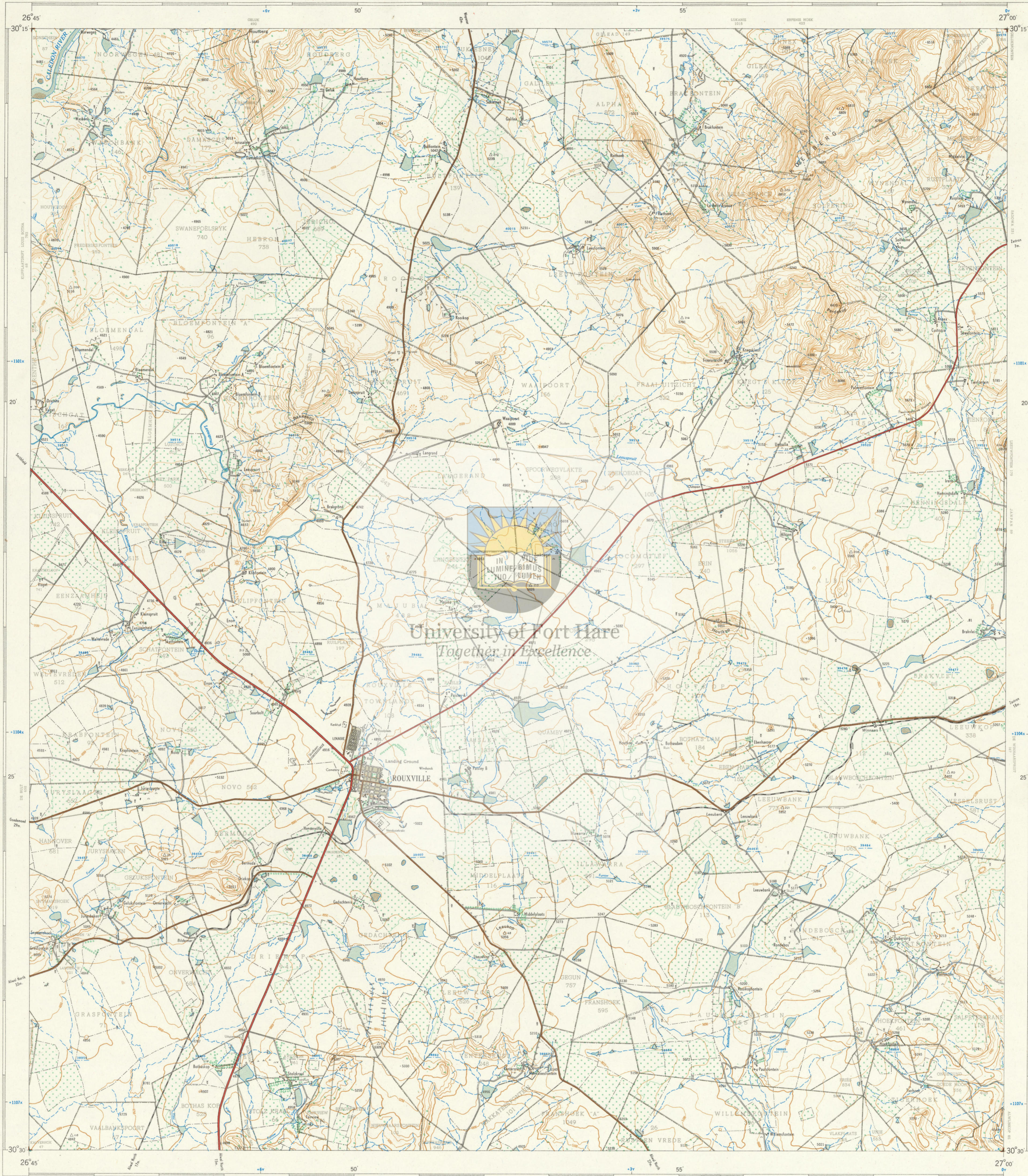




1:50,000 SUID-AFRIKA SOUTH AFRICA

3026BD ROUXVILLE

Verwys na hierdie Kaart as SUID-AFRIKA 1:50,000 Vel Refer to this Map as SOUTH AFRICA 1:50,000 Sheet 3026BD ROUXVILLE EERSTE UITGAWE FIRST EDITION



University of Fort Hare Together in Excellence

Lugfoto's 1952. Opgemaak en geteken in 1963 deur die Driehoeksmetingskantoor. Air Photography 1952. Surveyed and drawn in 1963 by the Triangulation Survey Office.

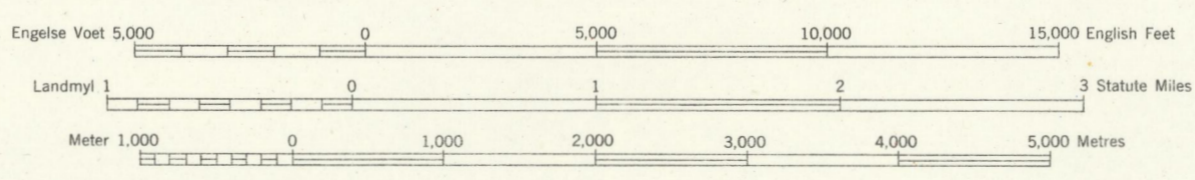
Hoogte-interval 50 Engelse Voet

1:50,000

Contour Interval 50 English Feet

Getrukk en Uitgegeef in die Republiek van Suid-Afrika deur die Staatsdrukker, Pretoria, 1964. Printed and Published in the Republic of South Africa by the Government Printer, Pretoria, 1964.

T.S.O. 200/1984



VERKLARING	REFERENCE
Internasionale Grense..... International Boundaries
Provisoriale Grense..... Provincial Boundaries
Veelvoorige Spoorlyne..... Multiple Track Railways
Enkelvoorige Spoorlyne..... Single Track Railways
Gaaslyne..... Electrically Equipped Railways
Smalvoorige Spoorlyne..... Narrow Gauge Railways
Diens- en Minerale Spoorlyne..... Service, Cane and Mineral Railways
Nasionale Paaie..... National Roads
Hoopstaple Paaie..... Main Roads
Sekondêre Paaie..... Secondary Roads
Ander Paaie..... Other Roads
Dowwe Paaie en Voetpaaie..... Tracks and Footpaths
Kraglyne..... Power Lines
Telefoon- en Telegraaflyne..... Telephone and Telegraph Lines
Pos- en Telegraafkantore, Polisie-stasies en -poste, Winkels, Hotelle, Skole en Plaaske van Aandbidding, Vuurtoringe en Seewarltligte..... Post and Telegraph Offices, Police Stations and Posts, Stores, Hotels, Schools and Places of Worship, Lighthouses and Marine Lights
Seewarltbakens..... Marine Beacons
Driehoeksbakens (Nommer regs en hoogte onder)..... Trig. Beacons (Number to right and height below)

Die rolyne van die Suid-Afrikaanse Kotlindstelsel word in die kaarte uitgesien deur kort swart lyne, 30,000 Engelse Voet van mekaar, met koördinaatwaardes in eenhede van 10,000 Engelse Voet in blou.

Alle hoogtes word in Engelse Voet tot op grondhoeke aangetoon. All heights are given in English Feet to ground level.

The grid lines of the South African Co-ordinate System are indicated in the margin by short black lines at 30,000 English Foot intervals, with co-ordinate values in units of 10,000 English Feet in blue.

INDEKS VAN VELLE INDEX TO SHEETS

30° 30'	45'	27'	15'	30'
3026BA	3026BB	3027AA		
3026BC	3026BD	3027AC		
3026DA	3026DB	3027CA		
30° 15'				

Cadastral information supplied by the Surveyor-General, O.F.S.

PRYS PER VEL 60c KOPIEREG PRICE PER SHEET COPYRIGHT

VERKLARING	REFERENCE
Magnetiese Stasies en Grondtekens..... Magnetic Stations and Ground Signs
Naturrelieffte..... Native Huts
Monumente..... Monuments
Dipbakke..... Dipping Tanks
Windmole..... Windmills
Klipmure..... Stone Walls
Grondbewaringswalle..... Anti-erosion Walls
Uitgrawings..... Excavations
Standhoudende Water..... Perennial Water
Nie-standhoudende Water..... Non-perennial Water
Droë Pannetjies..... Dry Pans
Fonteinne, Watergate en Putte..... Fountains, Springs, Waterholes and Wells
Moorasse en Vlede..... Marshes, Swamps and Vlede
Pylyne..... Pipelines
Fotomiddelgelyke..... Photo Centres
Uitstaande Klippanne..... Prominent Rock Outcrops
Terrasse..... Terraces
Bewerkte Lande..... Cultivated Lands
Boorde en Wingerde..... Orchards and Vineyards
Bome en Bos..... Trees and Bush

3026BD ROUXVILLE EERSTE UITGAWE FIRST EDITION