

# University of Fort Hare

Together in Excellence

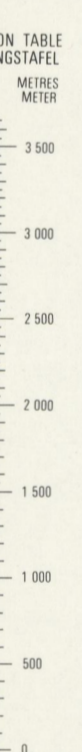
1:50 000 SOUTH AFRICA  
SUID-AFRIKA

3028 DC KATKOP

Refer to this Map as SOUTH AFRICA 1:50 000 Sheet 3028 DC KATKOP  
Verwys na hierdie Kaart as SUID-AFRIKA 1:50 000 Vel 3028 DC KATKOP



Geometrische meetkundige veranderinge van 1:50 000 tot 1:250 000  
van 1966 tot 1973 (3) Mean annual change van 1966 tot 1973 (3)  
Mean magnetic declination 27° E West of True North (1973) (3) Mean annual change of 1966 tot 1973 (3)



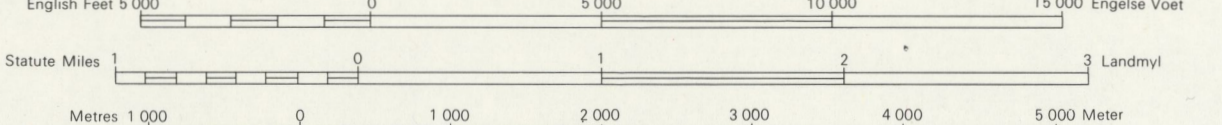
REFERENCE	VERKLARING	REFERENCE	VERKLARING
International Boundaries	Internasionale Grense	Magnetic Stations and Ground Signs	Magnetiese Stasies en Grondtekens
Provincial Boundaries	Provinsiale Grense	Hills	Heute
Multiple Track Railways	Veelvoudige Spoorlyne	Monuments	Monumente
Single Track Railways	Enkelspoorlyne	Dipping Tanks	Dipbakke
Electrified Railways	Gelektreïseerde Spoorlyne	Windmills	Windpompe
Non-gauge Railways	Smalspoorlyne	Walls	Mure
Service Railways	Diensspoorlyne	Anti-erosion Walls	Grondbewaringswalle
Arterial Roads	Hoofverkeerspaase	Excavations	Uitgrawings
Main Roads	Grootpaase	Perennial Water	Standhoudende Water
Secondary Roads	Sekondêre Paase	Non-perennial Water	Nie-standhoudende Water
Other Roads	Ander Paase	Dry Pans	Droë Panne
Tracks and Footpaths	Dowwe Paase en Voetpaase	Springs, Waterholes and Wells	Fontein, Watergate en Putte
Power Lines	Kraglyne	Marshes, Swamps and Vies	Moerasse en Vies
Telephone Lines	Telefoonlyne	Pipelines	Pyplyne
Post Offices, Police Stations and Posts	Poskantore, Polisie-stasies en -poste	Photo Centres	Fotomiddel-punte
Stores, Hotels, Schools and Places of Worship	Winkels, Hotelle, Skole en Plaase van Aandbidding	Prominent Rock Outcrops	Prominente Klipbarke
Lighthouses and Marine Lights	Vuurtorings en Seewaartligte	Terraces	Terrasse
Marine Beacons	Seewaartbaken	Cultivated Lands	Bewerkte Lande
Trig. Beacons (Number to right and height below)	Trig. Baken (Nommer regs en hoogte onder)	Orchards and Vineyards	Bome en Wingerde
		Trees and Bush	Bome en Bos

CONTOUR INTERVAL 50 ENGLISH FEET

1:50 000

KONTOURTUSSENRUIMTE 50 ENGELE VOET

Printed and published by the Government Printer, Private Bag X85, Pretoria 1973.  
Gedruk en uitgegee deur die Staatsdrukker, Private Bag X85, Pretoria 1973.



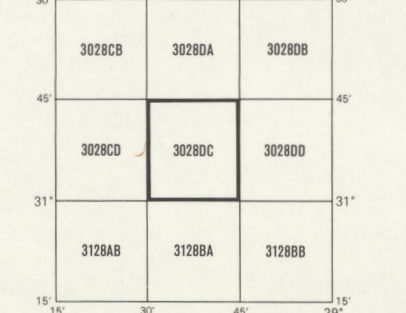
The grid lines of the South African Co-ordinate System are indicated in the margin by short black ticks at 10 000 metre intervals, with co-ordinate values in units of 10 000 metres in blue.

Elevations are in English Feet to ground level  
Hoogtes is in Engelse Voet op grondhoogte

Die ruttine van die Suid-Afrikaanse Koördinaatsisteem word in die kante van die kaart deur kort swart strepe, 10 000 meter van mekaar met koördinaatwaarde in eenhede van 10 000 meter in blou.

Gauss Conform Projection Central Meridian 29° East Clarke 1880 Spheroid  
Gauss se Konforme Projeksie Middelemeridian 29° Oos, Clarke 1880 Steroid

INDEX TO SHEETS INDEKS VAN VELLE



Cartabular information supplied by the Surveyor-General, Cape  
Original Farms

Natuerlike vindinge verskaf deur die Landmeter-generaal, Kaap  
Kompressieplan

COPYRIGHT KOPIEREG

3028 DC KATKOP FIRST EDITION  
EERSTE UITGAWE