

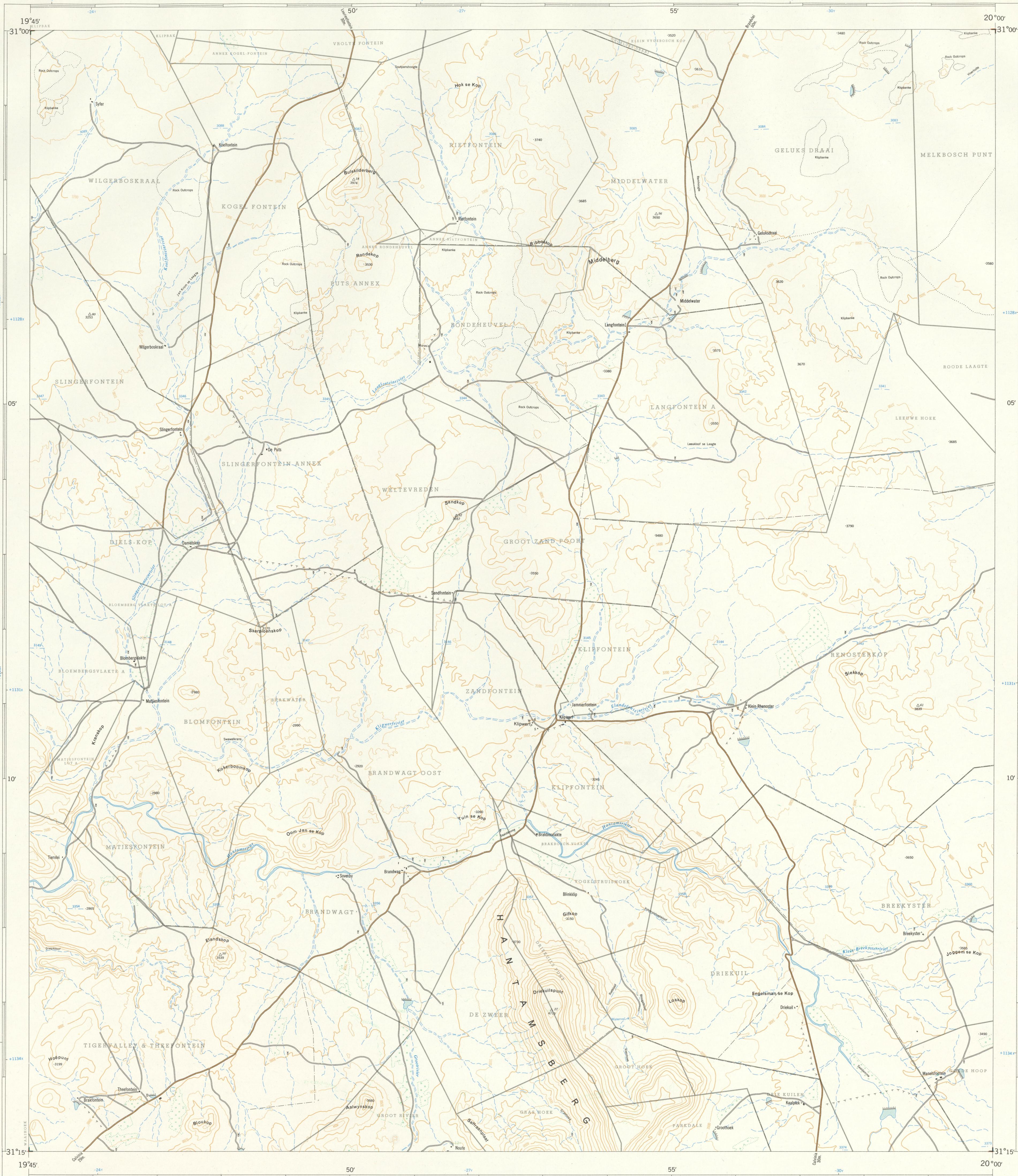


University of Fort Hare
Together in Excellence

1:50,000 SUID-AFRIKA
SOUTH AFRICA

3119BB KLIPWERF

Verwys na hierdie Kaart as SUID-AFRIKA 1:50,000 Vel
Refer to this Map as SOUTH AFRICA 1:50,000 Sheet
3119BB KLIPWERF
EERSTE UITGAVE FIRST EDITION



Lugfoto's 1957. Opgeteken en geteken in 1964 deur die Driehoeksmetingkantoor.
Air Photography 1957. Surveyed and drawn in 1964 by the Trigonometrical Survey Office.

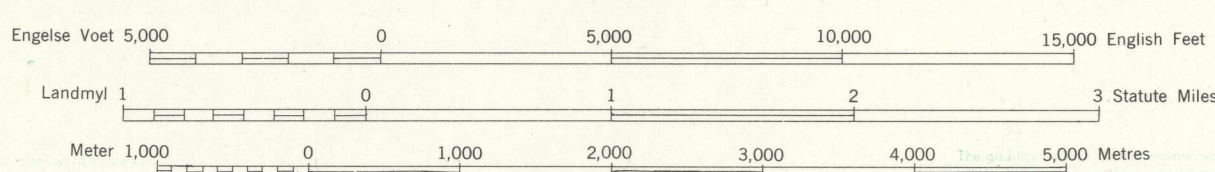
Hoogte in Tussenruimte 100 Engelse Voet

1:50,000

Contour Interval 100 English Feet

Gedruk en Uitgegeen in die Republiek van Suid-Afrika deur die Staatsdrukker, Pretoria, 1965
Printed and Published in the Republic of South Africa by the Government Printer, Pretoria, 1965

T.S.O. 200/2144



VERKLARING	REFERENCE	INTERNATIONAL BOUNDARIES
Internasionale Grense	International Boundaries
Provisoriale Grense	Provisional Boundaries
Veelvoudige Spoorlyne	Multiple Track Railways
Enkelspoorlyne	Single Track Railways
Gedeleë Spoorlyne	Electrified Railways
Diens-, Suikerriet- en Minerale Spoorlyne	Narrow Gauge Railways
Nasionale Paaie	National Roads
Hoofpaaie	Main Roads
Sekondêre Paaie	Secondary Roads
Ander Paaie	Other Roads
Doewe Paaie en Voetpaaie	Tracks and Footpaths
Kraglyne	Power Lines
Telefoon- en Telegraaflyne	Telephone and Telegraph Lines
Pos- en Telegraafkantore, Polisie-stasies en poste, Winkels, Hotelle, Skole en Plaaske van Aambodding	Post and Telegraph Offices, Police Stations and Posts, Stores, Hotels, Schools and Places of Worship
Vuurtoerings en Seewaartligte	Lighthouses and Marine Lights
Seewaartbakens	Marine Beacons
Driehoeksbakens (Nommer regs en hoogte onder)	Triang. Beacons (Number to right and height below)

Die ruitjies van die Suid-Afrikaanse Koordinatiese Sisteem word in die hantsems aangewys deur kort swart lyne. 30,000 Engelse Voet van mekaar, met koördinaatwaardes in eenhede van 10,000 Engelse Voet in blou. Die ruitjies van die aangrensende toerant word op dieselfde manier as die buitekant van die graadverdeling aangedui.

Alle hoogtes word in Engelse Voet tot op grondhoeke aangedui. All heights are given in English Feet to ground level. The grid lines of the South African Co-ordinate System are indicated in the margin by short black lines at 30,000 English Feet intervals, with co-ordinate values in units of 10,000 English Feet in blue. The grid lines of the adjoining grid system are indicated similarly on the outside of the graticule strip.

Kadastrale inligting verskaf deur die Landmeter-generaal, Kaap. Cadastral information supplied by the Surveyor-General, Cape.

INDEX VAN VELLE	INDEX TO SHEETS
30190	30190
30195	30195
30200	30200
30205	30205
30210	30210
30215	30215
30220	30220
30225	30225
30230	30230
30235	30235
30240	30240
30245	30245
30250	30250
30255	30255
30260	30260
30265	30265
30270	30270
30275	30275
30280	30280
30285	30285
30290	30290
30295	30295
30300	30300

VERKLARING	REFERENCE	
Magnetiese Stasies en Grondtekens	Magnetic Stations and Ground Signs
Bantuhutte	Bantu huts
Monumente	Monuments
Dipbakke	Dipping Tanks
Windpompe	Windmills
Mure	Walls
Grondbeweringswalke	Anti-erosion Walls
Uitgrawings	Excavations
Standhoudende Water	Perennial Water
Nie-standhoudende Water	Non-perennial Water
Droë Panne	Dry Pans
Fonteinne, Watergate en Putte	Fountains, Springs, Waterholes and Wells
Moerasse en Vleie	Marshes, Swamps and Vleis
Pyplyne	Pipelines
Fotomidepunte	Photo Centres
Uitstaande Klipbanke	Prominent Rock Outcrops
Terrasse	Terraces
Bewerkte Lande	Cultivated Lands
Boorde en Wingerde	Orchards and Vineyards
Bome en Bos	Trees and Bush

PRYS PER VEL 60C PRICE PER SHEET
KOPIEREG COPYRIGHT

3119BB KLIPWERF EERSTE UITGAVE FIRST EDITION