



University of Fort Hare Together in Excellence

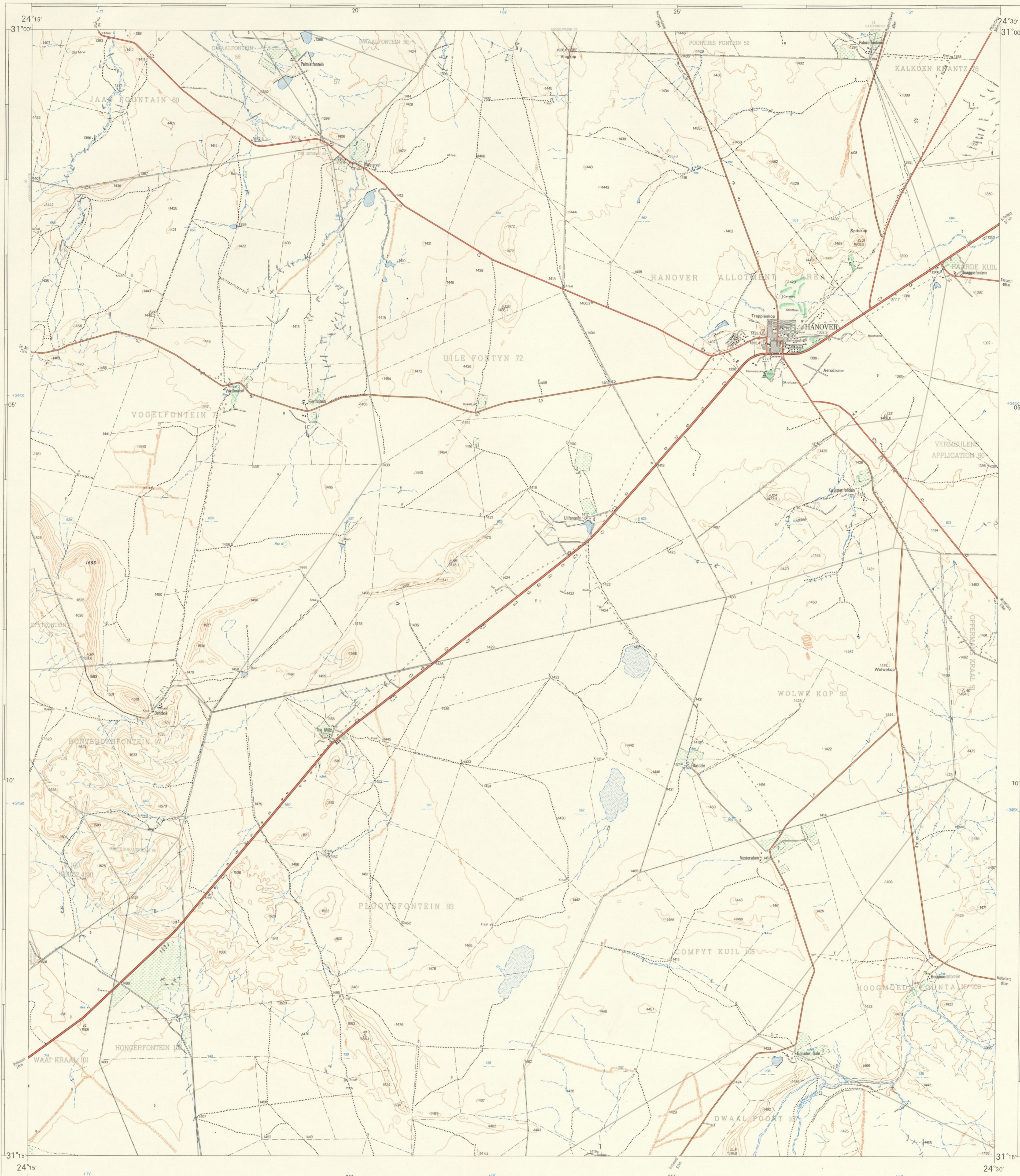
1:50 000 SUID-AFRIKA
SOUTH AFRICA

HOOGTES IN METER

3124AB HANOVER

HEIGHTS IN METRES

Verwys na hierdie Kaart as SUID-AFRIKA 1:50 000 Vel
Refer to this Map as SOUTH AFRICA 1:50 000 Sheet
3124 AB HANOVER
EERSTE UITGAWE FIRST EDITION



Magn. magneet deklinasie 27° S (1975)
of True North (1975.0). Mean annual change
1° (1960-1975)

ETTINGSTAFEL
GRONN TABEL
IN
VEET
FEET
11 000
10 000
9 000
8 000
7 000
6 000
5 000
4 000
3 000
2 000
1 000
0

Lugtfotografie 1966 (Taak No 566/66). Opgeneem in 1972 en geteken in 1973 deur die Dierhoekwagtingkantoor.
Air Photography 1966 (Libb No 566/66). Surveyed in 1972 and drawn in 1973 by the Trigometrical Survey Office

KONTOERLUSINTERVAL 20 METER
1:50 000
Meter 1 000 0 1 000 2 000 3 000 4 000 5 000 Metres
Engelse Voet 5 000 0 5 000 10 000 15 000 English Feet
Landmyl 0 1 2 3 Statute Miles

CONTOUR INTERVAL 20 METRES
1:50 000
Hendruk en uitgawe deur die Staatsdrukker, Privaatsak 435, Pretoria 1975.
Reprinted and published by the Government Printer, Private Bag 385, Pretoria 1975.
PRYS PER VEL R1.00 PRICE PER SHEET

VERKLARING	REFERENCE
Internasionale Grense	International Boundaries
Provinsiale Grense	Provincial Boundaries
Veevoldige Spoorlyne	Multiple Track Railways
Eenkeelspoorlyne	Single Track Railways
Gedieftelysteende Spoorlyne	Electric Railways
Smalspoorlyne	Narrow Gauge Railways
Diensspoorlyne	Service Railways
Hoofverkeerspaasie	Arterial Roads
Grootpaasie	Main Roads
Sekondêre Paasie	Secondary Roads
Ander Paasie	Other Roads
Dowwe Paasie en Voetspaasie	Tracks and Footpaths
Kraglyne	Power Lines
Telefoonlyne	Telephone Lines
Postkantore, Polisie-stasies en poste	Post Offices, Police Stations and Posts
Winkels, Hotelle, Skole en Plekke van Aasbuiding	Stores, Hotels, Schools and Places of Worship
Vuurtoerings en Seewaartligte	Lighthouses and Marine Lights
Seewaartligte	Marine Beacons
Trig Baken (Nommer regs en hoogte onder)	Trig. Beacons (Number to right and height below)

Die ruitlyne van die Suid-Afrikaanse Koordinatstelsel word in die kantoorlyne aangegee deur kort swart strepe, 10 000 meter van mekaar, met koördinaatwaardes in eenhede van 10 000 meter in blou.

Hoogtes in meter op grondhoogte
Heights in metres on ground level
Gauss se Konforme Projeksie, Middellandse 21° Oos, Clarke 1880 Sferoid
Gauss Conform Projection, Central Meridian 21° East, Clarke 1880 Spheroid

The grid lines of the South African Co-ordinate System are indicated in the margin by short black ticks at 10 000 metre intervals, with co-ordinate values in units of 10 000 metres in blue.

INDEKS VAN VELLE INDEX TO SHEETS

3124C	3124D	3124E
3124A	3124B	3124A
3124C	3124B	3124E

VERKLARING	REFERENCE
Magnetiese Stasies en Grondtekens	Magnetic Stations and Ground Signs
Hutte	Huts
Monumente	Monuments
Dobbakke	Dipping Tanks
Windpompe	Windmills
Mure	Walls
Grondbewaringswal	Anti-erosion Walls
Uitgrawings	Excavations
Standhoudende Water	Perennial Water
Nie-standhoudende Water	Non-perennial Water
Droë Paaie	Dry Pans
Fonteinne, Watergate en Putte	Springs, Waterholes and Wells
Moerasse en Vlies	Marshes, Swamps and Vlies
Pylyne	Pipelines
Fotomidepunte	Photo Centres
Prominente Klipbänke	Prominent Rock Outcrops
Terasse	Terraces
Bewerkte Lande	Cultivated Lands
Boorde en Wingerde	Orchards and Vineyards
Bome en Bos	Trees and Bush

KOPIEREG COPYRIGHT

3124AB HANOVER EERSTE UITGAWE FIRST EDITION