



University of Fort Hare Together in Excellence

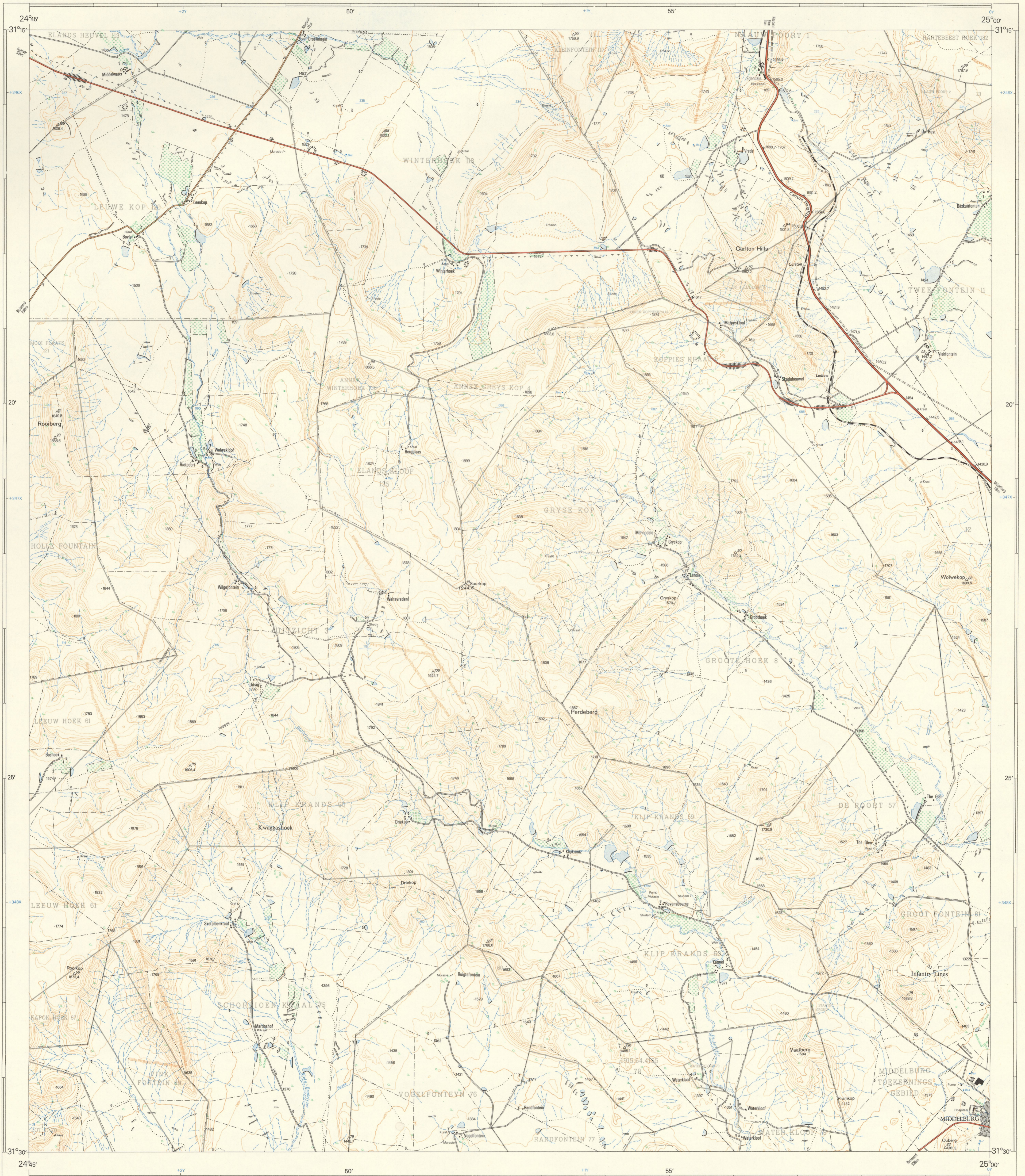
1:50 000 SUID-AFRIKA
SOUTH AFRICA

HOOGTES IN METER

3124BD CARLTON

HEIGHTS IN METRES

Verwys na hierdie Kaart as SUID-AFRIKA 1:50 000 Vel
Refer to this Map as SOUTH AFRICA 1:50 000 Sheet
3124BD CARLTON
ERSTE UITGAVE: EERSTE EDITION



Luigfotografie: 1965 (Task No. 522/65) Opgeneem en geteken in 1975 deur die Direkteur-generaal van Opname.
Air Photography: 1965 (Job No. 522/65) Surveilled and drawn in 1975 by the Director-General of Surveys.

T.S.O. 200/6548

KONTOURTUSSENRUIMTE 30 METER

1:50 000

CONTOUR INTERVAL 30 METRES

Gedruk en uitgegee deur die Staatsdrukker, Private Bag X85, Pretoria 1975.
Printed and published by the Government Printer, Private Bag X85, Pretoria 1975.

PRYS PER VEL R1,00. PRICE PER SHEET

VERKLARING

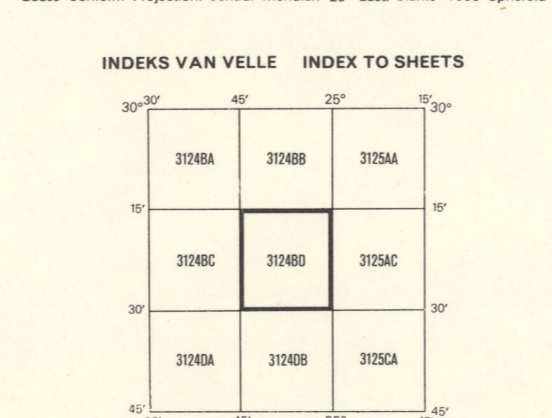
REFERENCE

Internasionale Grense	International Boundaries	Postkantore, Polisie-stasies en poste	Post Offices, Police Stations and Posts
Provinsiale Grense	Provincial Boundaries	Winkels, Hotelle, Skole en Plekke van Aandbidding	Stores, Hotels, Schools and Places of Worship
Veevoedige Spoorlynne	Multiple Track Railways	Vuurtoringe en Seevaartligte	Lighthouses and Marine Beacons
Elektrisifiseerde Spoorlynne	Single Track Railways	Trig Baken (Nommer regs en hoogte onder)	Trig Beacons (Number to right and height below)
Gaaspoorlynne	Electric Railways		
Smalvoedige Spoorlynne	Narrow Gauge Railways		
Dienspoorlynne	Service Railways		
Hooftverkeerspaasie	Arterial Roads		
Groepasie	Main Roads		
Sekondêre Paasie	Secondary Roads		
Ander Paasie	Other Roads		
Downse Paasie en Voetpaasie	Tracks and Footpaths		
Telefoonlynne	Power Lines		
	Telephone Lines		

Die natinne van die Suid-Afrikaanse Koordinatstelsel word in die kante van die kaart deur kort swart strepe, 10 000 meter van mekaar, met koördinaatwaardes in eenheids van 10 000 meter in blou.

The grid lines of the South African Co-ordinate System are indicated in the margin by short black ticks at 10 000 metre intervals, with co-ordinate values in units of 10 000 metres in blue.

INDEKS VAN VELLE INDEX TO SHEETS



Koördinaat-inligting verskaf deur die Landmeter-generaal Kaap.
Co-ordinate information supplied by the Surveyor-General Cape.

Original Form

KOPIEREG COPYRIGHT

VERKLARING

REFERENCE

Magnetiese Stasies en Grondtekens	Magnetic Stations and Ground Signs
Hutte	Huts
Monumente	Monuments
Digbake	Dipping Tanks
Windpomp	Windmills
Mure	Walls
Grondbeweringswalle	Anti-erosion Walls
Uitgrawings	Excavations
Standhoudende Water	Perennial Water
Nie-standhoudende Water	Non-perennial Water
Droë Panne	Dry Pans
Fonteinne, Watergate en Putte	Springs, Waterholes and Wells
Moerasse en Vieë	Marshes, Swamps and Vies
Pylyne	Pipelines
Fonteindeurpunte	Photo Centres
Prominente Klippanke	Prominent Rock Outcrops
Terrasse	Terraces
Bewepte Lande	Cultivated Lands
Boude en Wingerde	Orchards and Vineyards
Bome en Bos	Trees and Bush

3124BD CARLTON ERSTE UITGAVE: EERSTE EDITION

