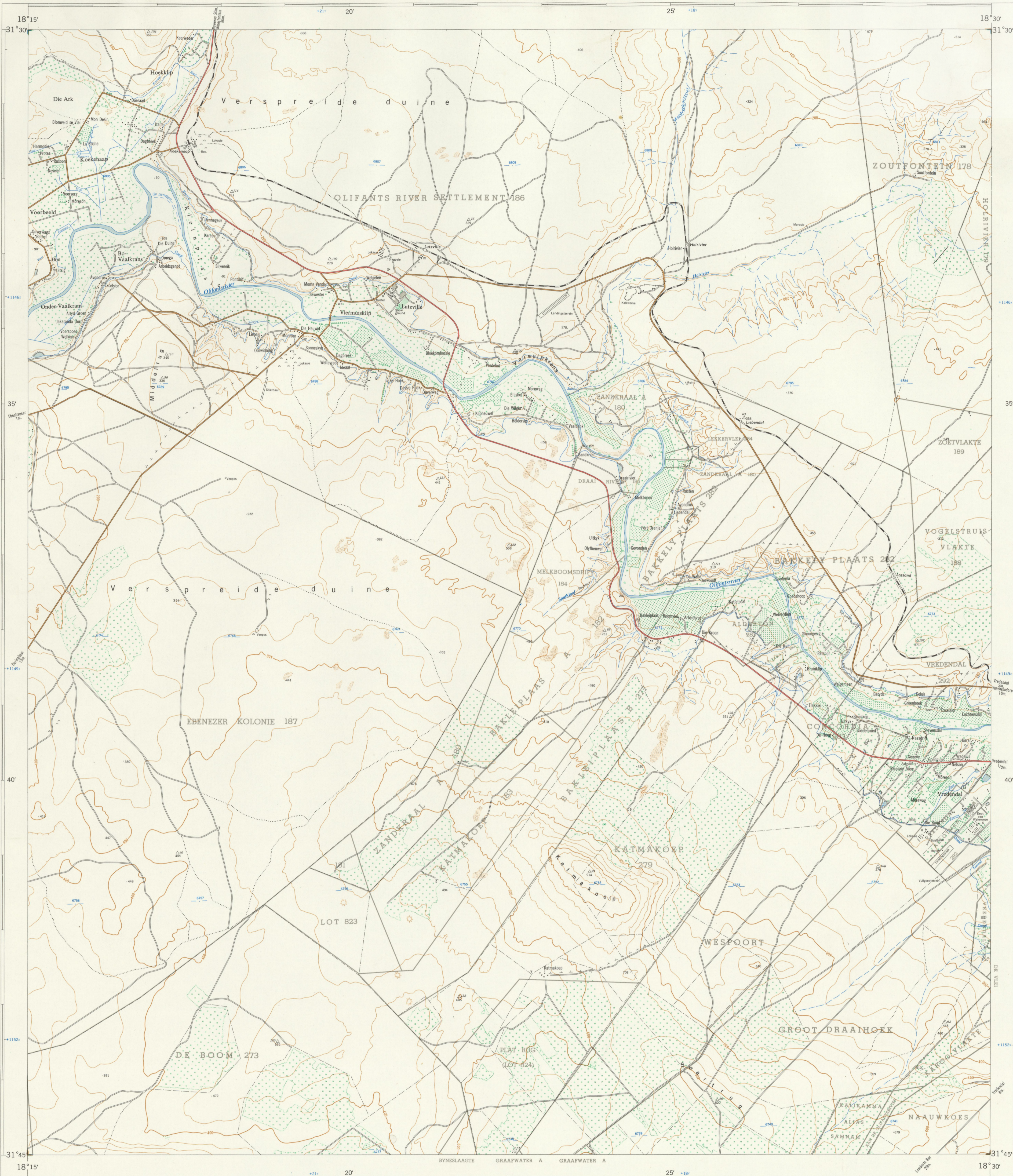




1:50,000 SUID-AFRIKA SOUTH AFRICA

3118CB LUTZVILLE

University of Fort Hare
3118CB LUTZVILLE
Refer to this Map as SOUTH AFRICA 1:50,000 Sheet
EERSTE UITGAWE FIRST EDITION



Mean magnetic declination 2° 0 West of True North (1965.0) No annual magnetic change (1961-1965)

Vertical scale in meters

Lugtfotografie 1959 Opgeteken in 1961 en geteken in 1966 deur die Driehoekmetringstryk.
Air Photography 1959. Surveyed in 1961 and drawn in 1966 by the Triangometrical Survey Office.

Kontourruimte 50 Engelse Voet

1:50,000

Contour Interval 50 English Feet

Getek en Uitgegee in die Republiek van Suid-Afrika deur die Staatsdrukker, Pretoria, 1966.
Printed and Published in the Republic of South Africa by the Government Printer, Pretoria, 1966.

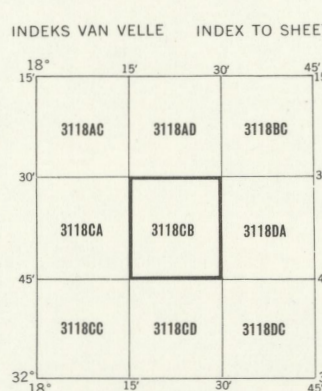
VERKLARING REFERENCE table with symbols for international boundaries, roads, railways, etc.

Dië ruitjies van die Suid-Afrikaanse Koordinatstelsel word in die kantsjette geskoon deur kort swart lyne, 30,000 Engelse Voet van mekaar, met koördinaatwaardes in eenhede van 10,000 Engelse Voet in blou.

Alle hoogtes word in Engelse Voet tot op grondhoogte aangegee. All heights are given in English Feet to ground level. Gaus se Konforme Projeksie, Middellandseans 19° Oos. Gauss Conform Projection, Central Meridian 19° East.

The grid lines of the South African Co-ordinate System are indicated in the margin by short black lines at 30,000 English Feet intervals, with co-ordinate values in units of 10,000 English Feet in blue.

VERKLARING REFERENCE table with symbols for magnetic stations, huts, monuments, etc.



PRYS PER VEL 60c PRICE PER SHEET KOPIEREG COPYRIGHT