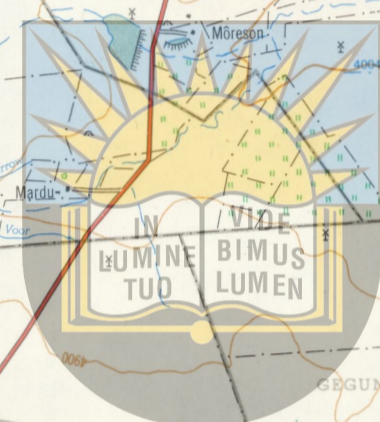
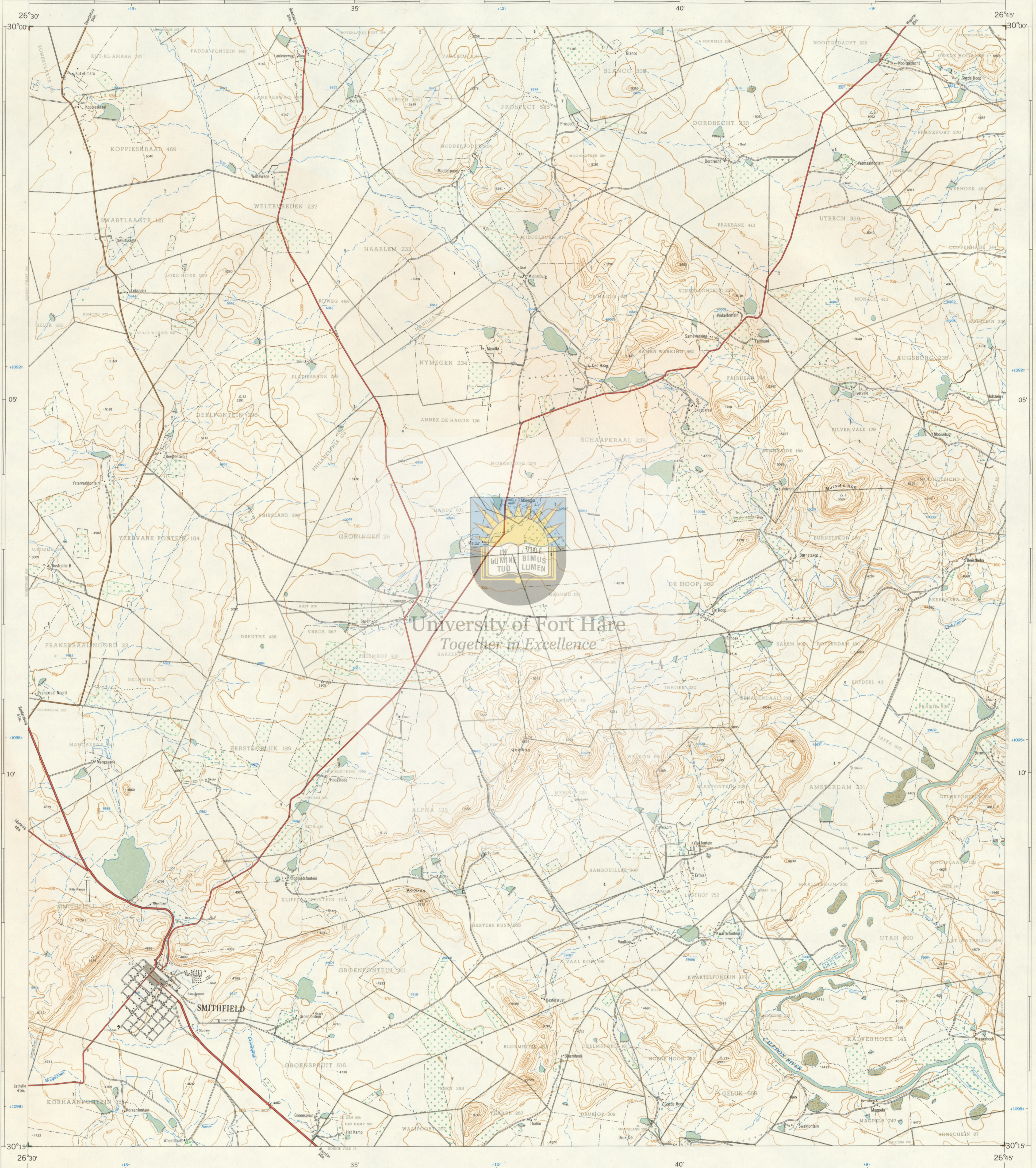




1:50,000 SOUTH AFRICA SUID-AFRIKA

3026BA SMITHFIELD

Refer to this Map as SOUTH AFRICA 1:50,000 Sheet 3026BA SMITHFIELD Verwys na hierdie Kaart as SUID-AFRIKA 1:50,000 Vel 3026BA SMITHFIELD FIRST EDITION EERSTE UITGAWE



University of Fort Hare Together in Excellence

Air Photography 1952&1957. Surveyed in 1963 and drawn in 1963 by the Trigometrical Survey Office. Lugfoto's 1952&1957. Opgeneem in 1963 en geteken in 1963 deur die Dreiekmetsingkantoor.

Contour Interval 50 English Feet

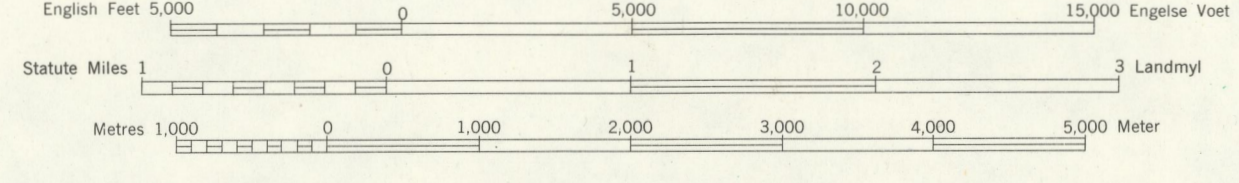
1:50,000

Hoogtegrens Tussenruimte 50 Engelse Voet

Printed and Published in the Republic of South Africa by the Government Printer, Pretoria 1964. Gedruk en Uitgegee in die Republiek van Suid-Afrika deur die Staatsdrukker, Pretoria 1964

REFERENCE VERKLARING table with symbols for international boundaries, railways, roads, and other features.

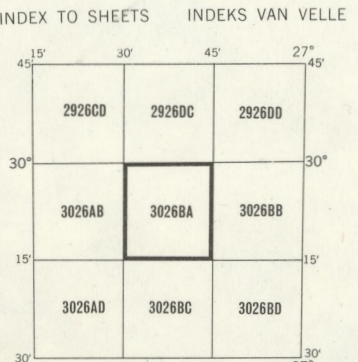
REFERENCE VERKLARING table with symbols for magnetic stations, native huts, monuments, and other features.



The grid lines of the South African Co-ordinate System are indicated in the margin by short black lines at 30,000 English Feet intervals, with co-ordinate values in units of 10,000 English Feet in blue.

All heights are given in English Feet to ground level. Alle hoogtes word in Engelse Voet tot op grondhoogte aangetoon. Gauss Conform Projection, Central Meridian 27° East. Gauss se Konforme Projeksie, Middellandse Meridian 27° Oos.

The null lines of the South African Co-ordinate System are indicated in the margin by short black lines at 30,000 English Feet intervals, with co-ordinate values in units of 10,000 English Feet in blue.



Cadastral information supplied by the Surveyor-General, O.F.S. Oorspronklike Plaaie.

PRICE PER SHEET 60c PRYS PER VEL 60c COPYRIEGT KOPIEREIG

3026BA SMITHFIELD FIRST EDITION EERSTE UITGAWE