

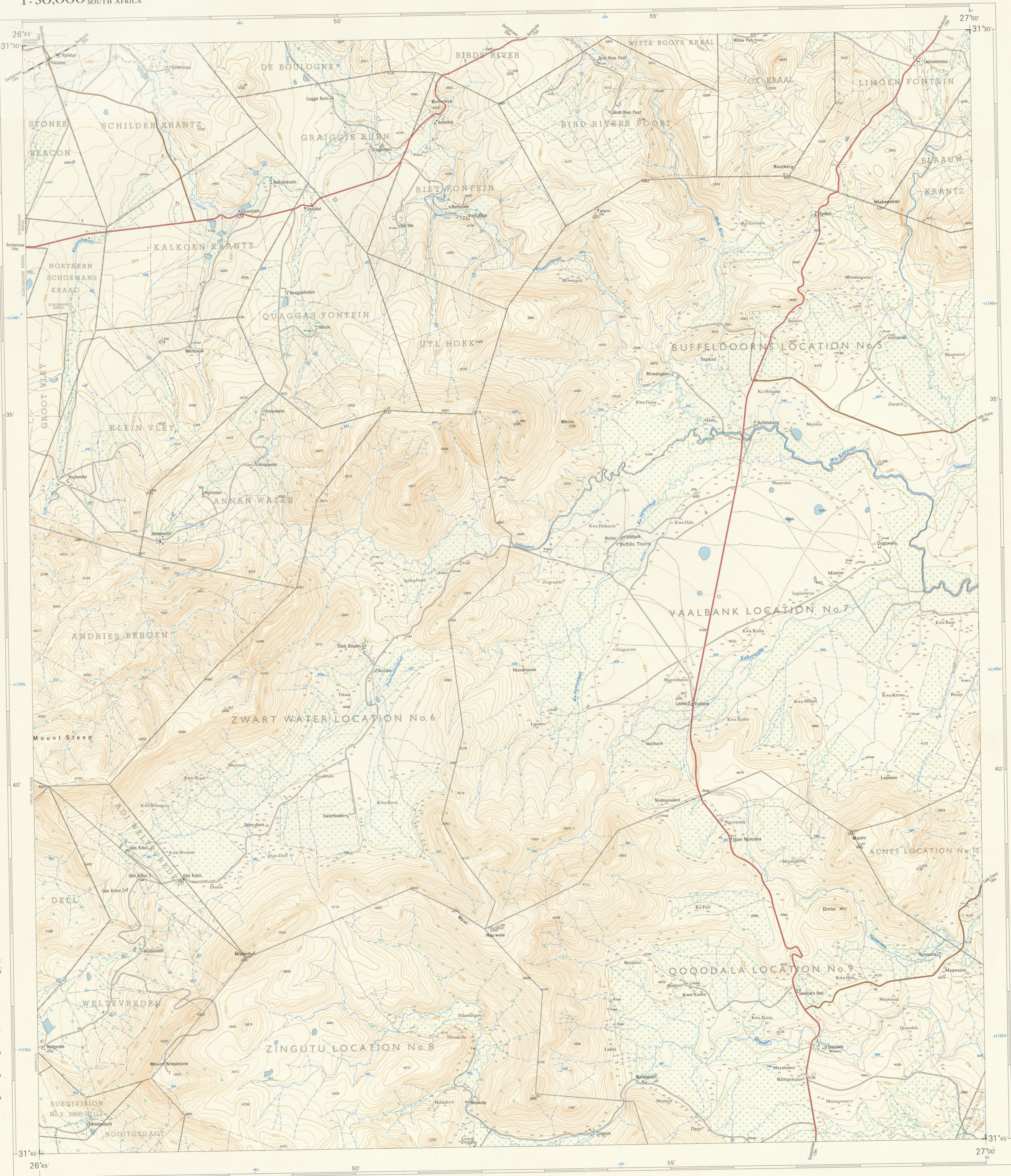
University of Fort Hare  
Together in Excellence

1:50,000 SUID-AFRIKA SOUTH AFRICA

# 3126DB VAALBANK

Verwys na hierdie Kaart as SUID-AFRIKA 1:50,000 Vel  
Refer to this Map as SOUTH AFRICA 1:50,000 Sheet

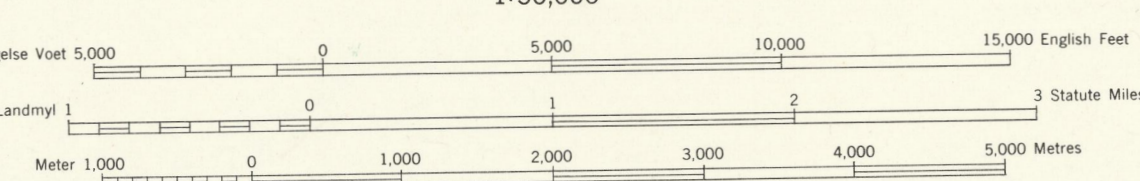
3126DB VAALBANK  
EERSTE UITGAWE FIRST EDITION



Lugfoto's 1950 Opgemaak in 1968 en geteken in 1969 deur die Drieboekommeting.  
Air Photography 1950 Surveyed in 1968 and drawn in 1969 by the Triangulation Survey Office.

Kontourinterval 50 Engelse Voet  
Contour interval 50 English Feet

1:50,000



Gedruk en Uitgegeen in die Republiek van Suid-Afrika deur die Staatsdrukker, Pretoria, 1969.  
Printed and Published in the Republic of South Africa by the Government Printer, Pretoria, 1969.

**VERKLARING REFERENCE**

Internasionale Grense	International Boundaries
Provisoriale Grense	Provisional Boundaries
Vesvoigende Spoorlynne	Multiple Track Railways
Elektrifiserende Spoorlynne	Electrified Railways
Smalspoorlynne	Narrow Gauge Railways
Dienspoorlynne	Service Railways
Nasionale Paale	Main Roads
Hooppaale	Secondary Roads
Sekondêre Paale	Other Roads
Ander Paale	Tracks and Footpaths
Doorn Paale en Voetpaale	Power Lines
Kraglynne	Telephone and Telegraph Lines
Telefoon- en Telegraaflynne	Post and Telegraph Offices, Police Stations and Posts, Stores, Hotels, Schools and Places of Worship
Pos- en Telegraafkantore, Polisie-stasies en -poste, Winkel, Hotelle, Skole en Plaaske van Aandbidding	Lighthouses and Marine Lights
Vuurtoerings en Seewaartligte	Marine Beacons
Sewaartligte	Trig. Beacons (Number to right and height below)
Drieboekommeting (Nommer regs en hoogte onder)	

Die ruitlyn van die Suid-Afrikaanse Koordinatstelsel word in die kaartomtrek aangegee deur kort swart lynne, 50,000 Engelse Voet van mekaar, met koördinaatwaardes in eenhede van 10,000 Engelse Voet in blou.

All heights are given in English Feet to ground level.  
All heights are given in English Feet to ground level.  
Gauss se Konforme Projeksie, Middellandse 27° Oos.  
Gauss Conform Projection, Central Meridian 27° East.

Kadastrale inligting verskaf deur die Landmeter-generaal, Kaap en die Departement van Bantoe-administrasie en -ontwikkeling.

Grense van Lokasies  
Grense van Waaie  
Oregraspaale

**INDEX VAN VELLE INDEX TO SHEETS**

30	45	27	15
3126BC	3126BD	3126BE	
3126BA	3126BB	3126BB	
3126BC	3126BD	3126BE	
30	45	27	15

The grid lines of the South African Co-ordinate System are indicated in the margin by short black lines at 50,000 English Feet intervals, with co-ordinate values in units of 10,000 English Feet in blue.

Cadastral information supplied by the Surveyor-General, Cape, and the Department of Bantoe Administration and Development.

Location Boundaries  
Ward Boundaries  
Original Farms

**VERKLARING REFERENCE**

Magnetiese Stasies en Grondtekens	Magnetic Stations and Ground Signs
Hutte	Huts
Monumente	Monuments
Dipbakke	Dipping Tanks
Windpompe	Windmills
Mure	Anti-erosion Walls
Grondbewaringswalle	Excavations
Uitgrawings	Perennial Water
Standhoudende Water	Non-perennial Water
Nie-standhoudende Water	Dry Pans
Droë Panne	Fountains, Springs, Waterholes and Wells
Fontein, Watergate en Putte	Marshes, Swamps and Vleis
Moerasse en Vleis	Photo Centres
Pylyne	Prominent Rock Outcrops
Fotomiddelpunte	Terraces
Uitsaande Kilpanke	Cultivated Lands
Terrasse	Orchards and Vineyards
Beweirde Lande	Trees and Bush
Boorde en Wingerde	
Bome en Bos	

T.S.O. 200/3746

PRYS PER VEL 60c PRICE PER SHEET  
KOPIEREG COPYRIGHT

3126DB VAALBANK EERSTE UITGAWE FIRST EDITION