

South African Native
College.

CALENDAR

FOR 1934

University of Fort Hare
Together in Excellence



NINETEENTH YEAR.

Fort Hare, Alice, Cape Province, S. A.

Table of Contents.

Calendar, 1934	3
Almanac	4
Historical Sketch	5
Council	10
Staff	12
Senatus	13
General Information :					
Scope and Objects, Situation	15
Terms, Admission of Students	15
Fees	16
Medical Examination	17
General Regulations	17
Hostels	18
Scholarships	20
Entrance Qualifications	23
Courses of Study	24
Regulation for External Students	27
Arts, College Diploma, and Pre-Medical Syllabuses	31
Higher Diploma in Education	51
College Diploma in Education	56
Joint Board Matriculation	58
College Matriculation Examination	67
Agriculture	71
Commercial Examinations and Syllabuses	76
College Library	77
College Societies	79
College Record	85
College Register	103
Constitution	107
Schedule of Regulations Affecting Hostels	112
Theological Training	116
Rules for Procedure of Council	117
Rules and Regulations of Senatus	119
Reports, 1932	122
Statistics	136
Balance Sheet					
Higher Education Act No. 30 of 1923. Appendix					



University of Port Harcourt
Together in Excellence

Calendar for 1934.

- January 8—Opening of "Stewart Hall," 1921.
 February 8—Anniversary of College Opening by
 General Botha, 1916.
 September 4—Foundation Stone of Dining Hall laid
 by General Hertzog, 1925.
 December 10—Foundation Stone of Christian Union
 laid by Dr. Henderson, 1929.

Friday	Feb.	23—	First term begins.—Students arrive.
Friday	March	30—	Good Friday.
Monday	April	2—	Mid Term Holiday.
Tuesday	May	1—	Last Day for paying Second Quarter's Fees.
Wednesday	June	13—	First Term Examinations begin.
Thursday	"	21—	First Term ends.
Friday	July	20—	Second Term begins—Students arrive.
Wednesday	Aug.	1—	Last Day for paying Third Quarter's Fees.
Wednesday	Aug.	15—	Entries close for Commercial Exami- nations.
Saturday	Sept.	1—	Entries close for December Exami- nations.
Wednesday	"	12—	College Sports.
Wednesday	"	19—	Second Term Examinations.
Saturday	"	22—	Inter-College Athletic Contest.
Friday	"	28 to Oct. 1—	Term Holiday.
Tuesday	Oct.	2—	Last Day for paying Fourth Quarter's Fees.
Monday	Dec.	3—	Degree and College Examinations begin.
Wednesday	"	12—	Fourth Term ends.



University of Fort Hare
Together in Excellence

Almanac for 1934.

JANUARY

Su	Mo	Tu	We	Th	Fr	Sa
	1	2	3	4	5	6
7	8	9	10	11	12	13
14	15	16	17	18	19	20
21	22	23	24	25	26	27
28	29	30	31			

FEBRUARY

Su	Mo	Tu	We	Th	Fr	Sa
				1	2	3
4	5	6	7	8	9	10
11	12	13	14	15	16	17
18	19	20	21	22	23	24
25	26	27	28			

MARCH

Su	Mo	Tu	We	Th	Fr	Sa
				1	2	3
4	5	6	7	8	9	10
11	12	13	14	15	16	17
18	19	20	21	22	23	24
25	26	27	28	29	30	31

APRIL

Su	Mo	Tu	We	Th	Fr	Sa
1	2	3	4	5	6	7
8	9	10	11	12	13	14
15	16	17	18	19	20	21
22	23	24	25	26	27	28
29	30					

MAY

Su	Mo	Tu	We	Th	Fr	Sa
		1	2	3	4	5
6	7	8	9	10	11	12
13	14	15	16	17	18	19
20	21	22	23	24	25	26
27	28	29	30	31		

JUNE

Su	Mo	Tu	We	Th	Fr	Sa
					1	2
3	4	5	6	7	8	9
10	11	12	13	14	15	16
17	18	19	20	21	22	23
24	25	26	27	28	29	30

University of Fort Hare
Together in Excellence

JULY

Su	Mo	Tu	We	Th	Fr	Sa
1	2	3	4	5	6	7
8	9	10	11	12	13	14
15	16	17	18	19	20	21
22	23	24	25	26	27	28
29	30	31				

AUGUST

Su	Mo	Tu	We	Th	Fr	Sa
			1	2	3	4
5	6	7	8	9	10	11
12	13	14	15	16	17	18
19	20	21	22	23	24	25
26	27	28	29	30	31	

SEPTEMBER

Su	Mo	Tu	We	Th	Fr	Sa
						1
2	3	4	5	6	7	8
9	10	11	12	13	14	15
16	17	18	19	20	21	22
23	24	25	26	27	28	29
30						

OCTOBER

Su	Mo	Tu	We	Th	Fr	Sa
	1	2	3	4	5	6
7	8	9	10	11	12	13
14	15	16	17	18	19	20
21	22	23	24	25	26	27
28	29	30	31			

NOVEMBER

Su	Mo	Tu	We	Th	Fr	Sa
				1	2	3
4	5	6	7	8	9	10
11	12	13	14	15	16	17
18	19	20	21	22	23	24
25	26	27	28	29	30	

DECEMBER

Su	Mo	Tu	We	Th	Fr	Sa
						1
2	3	4	5	6	7	8
9	10	11	12	13	14	15
16	17	18	19	20	21	22
23	24	25	26	27	28	29
30	31					

Historical Sketch.

The South African Native College was declared open by the Rt. Hon. General Botha, in the presence of a large and representative gathering of Europeans and Natives on the 8th of February, 1916. Thus, after many years, the ideal of a College for the higher education of the Natives of South Africa reached the stage of working realization.

As early as the year 1880 Dr. James Stewart of Lovedale recognized that if the desire for education on the part of Natives continued to grow, sooner or later it would be necessary to provide an Institution which would give an education, under Christian auspices, of University standard. In November 1904, Dr. Stewart represented this view to the Inter-Colonial Native Affairs Commission, of which Sir Godfrey Lagden was President, and when this Commission reported in January 1905, the recommendation was made "that a Central Native College or similar institution be established and aided by the various States for training Native teachers and in order to afford opportunity for higher education to Native students."

On the 28th of December, 1905, a week after the death of Dr. Stewart, a convention of Natives from all the States of South Africa was held at Lovedale under the presidency of the late Mr. J. W. Weir of King William's Town, to consider the steps that should be taken to give effect to the recommendation of the Inter-Colonial Native Affairs Commission. It was resolved to prepare a petition for presentation to the High Commissioner and the various Governments of South Africa, praying that an Inter-State Native College should be established.

In the years that followed much was done to enlist the sympathy of the Governments concerned and to obtain the support of the Churches and of the Native Races throughout the Sub-Continent. Much is due to the efforts of the late Hon. J. W. Sauer, General Sir C. P. Crewe, and Senator the Hon. Colonel Stanford. An Executive Board, appointed by the Conference of Representatives of the Guarantee Fund, met for the first time on the 3rd of October 1907, under the Chairmanship of the

Rev. James Henderson, M.A., Principal of Lovedale. The interest of the Natives in the scheme was manifested by the grant of £10,000 made by the Transkeian Territories General Council in the same year. The United Free Church of Scotland offered a site at Fort Hare as part of a contribution of £5,000, and other contributions were made or promised.

In 1908 a Select Committee on Native Education appointed by the Parliament of Cape Colony reported in favour of support being given to the Inter-State College but owing to the large political questions engaging the attention of statesmen both before and after the passing of the Act of Union in 1910, the College scheme suffered delay.

Meanwhile, with the capital already available, a property adjoining the site at Fort Hare promised by the United Free Church of Scotland had been purchased. The whole formed a compact block with buildings suitable for staff housing and capable of adaptation to allow of the carrying on of the College until such time as permanent buildings might be erected. The site proposed for the future College Buildings was the historic one at Fort Hare, on which the lines, trenches, bastions and block-house of that important military station, the largest on the frontier, are still clearly visible. From the site the ground slopes away to the Tyumie River which girdles the lands now occupied by the College Farm.

In November 1914 an important step forward was taken when the Constitution of the College which had been submitted in draft to the contributors and various bodies interested, was finally adopted. The Governing Council of the College, established under the Constitution, held its first meeting in January 1915, and took over the funds hitherto administered by the Executive Board. The Council decided that the site offered by the United Free Church of Scotland was suitable for the purposes of the College, which, in view of the incorporation in the Union of the various States interested in its foundation, was hereafter to be called "THE SOUTH AFRICAN NATIVE COLLEGE." The Government of the Union of South Africa pledged its support by promising an annual grant and appointed its representatives to the Governing Council, a step that was



STEWART HALL, (TUITION BLOCK), FORT HARE.

also taken by the University of the Cape of Good Hope and by the various contributing bodies.

In February 1916, as already noted, the College was declared open by the Prime Minister of the Union, and classes were inaugurated on the 22nd of the same month with a roll of twenty students, drawn from all the provinces of the Union and from Basutoland.

In 1917 the Governing Council approved of plans which had been prepared by the Public Works Department of the Union. The scheme makes provision for the gradual development of the College through a long series of years.

In 1918, the Union Government placed upon the loan estimates a sum of £10,800 for the erection of the middle portion of the main tuition block which the Governing Council unanimously agreed to associate with the name of Dr. Stewart. The loan was passed by Parliament and thus, in spite of the difficulty of war conditions, the erection of the permanent building of the College was ensured.

In the same year the Wesleyan Methodist Church of South Africa which had been interested in the scheme from its inception determined in Conference to proceed immediately with the erection of the Hostel to accommodate students belonging to that denomination and, availing itself of opportunities provided by the Governing Council, resolved to transfer its Theological Seminary for Native ministers to Fort Hare.

In 1919, the Administration of Basutoland intimated its intention of contributing an annual grant of £300 to the funds of the College, and of sending a representative to sit on the Governing Council of the College.

In 1920, the erection of the Wesleyan Hostel and Warden's Residence was begun and the Warden was appointed to the Staff. The Hostel was completed in 1921.

In the same year the Church of the Province rented a house as temporary hostel and the Warden was appointed to the Staff.

In 1920, also, the first portion of "Stewart Hall" was completed and taken over for teaching. This was opened by the Rt. Hon. F. S. Malan, Minister for Education, on the 8th day of January, 1920, in the presence of a large gathering of Europeans and Natives.

In 1923 the College was incorporated under the Higher Education Act (No. 30 of 1923). By this Act the Government of the Union of South Africa is entitled to nominate *four* representatives to the Council instead of *two*, while the Senatus, or Board of Studies, obtains *two* representatives for the first time. The Governing Council which had fashioned the policy of the College since 1916 and had seen it through the uncertainties of its early days held its last meeting on the 30th August, 1923, when certain alterations to the constitution, necessary to bring it into line with the provisions of the Act, were passed.

In 1923 the Presbyterian Hostel was erected on a site granted to the United Free Church of Scotland in 1919. It was occupied in February 1924.

In 1925 the Foundation stone of the Assembly and Dining Hall was laid by the Hon. the Prime Minister, General J. B. M. Hertzog, and an extension of Stewart Hall was undertaken.

In 1926, for the better prosecution of the Agricultural Training given at the College, an additional farm of 1250 acres was purchased, and adequately stocked with dairy cattle. The College Farm land was thus brought up to a total of 1600 acres (approx.) and room for expansion secured.

In 1926 also, £1,500, being the balance of a donation promised in 1926 on condition that £50,000 of capital was raised, was paid over by De Beers Diamond Syndicate.

In 1929 Dr. Henderson laid the foundation stone of the Student Christian Union, the cost of which had been given by the Student Christian Associations of the United States and Canada. This hall was officially opened on 27th June, 1930, by Mrs. Max Yergan. It provides the headquarters of the Native Branch of the Student Christian Movement in South Africa, and is intended to afford a training ground for social workers.

On 19th July, 1930, died Dr. Henderson, Principal of Lovedale. Dr. Henderson was elected first chairman of the Executive Board formed to promote the College scheme in 1907, and on the formation of the Governing Council in 1915 was continued as chairman, an office which he held until his death. Dr. Henderson thus directed the promoting and governing bodies of the College for the first twenty-three years of its development.



University of Fort Hare
Together in Excellence

Council.

Members of the Council.

Representing the Union Government :

THE SECRETARY FOR EDUCATION.

(Secundus: REV. W. S. CONRADIE.)

THE SECRETARY FOR NATIVE AFFAIRS.

(Secundus: THE CHIEF MAGISTRATE OF THE
TRANSKEI.)

D. MCK. MALCOLM, B.A.

(Secundus: H. F. G. KUSCHKE.)

M. G. APTHORPE, B.A.

(Secundus: G. H. WELSH, B.A.)

Representing the University of South Africa :

PROF. G. F. DINGEMANS, M.A.

PROF. J. EWING, M.A.

Representing Basutoland Administration :

F. H. DUTTON, M.A.

(Secundus: F. M. REID.)

Representing Native Secondary Education :

REV. A. CARDROSS GRANT, M.A.

Representing the College Senatus :

D. J. DARLOW, B.A.

C. P. DENT, M.Sc.

Representing the Transkeian General Council :

CR. JOSIAH XAKAKILE.

(Secundus: CR. M. M. BALFOUR.)

CR. REV. J. J. XABA.

(Secundus: CR. S. LEHANA.)

Representing the Church of Scotland :

REV. A. W. WILKIE, O.B.E., D.D.

(Secundus: J. CHALMERS, M.A., B.Sc.)

NEIL MACVICAR, M.D., D.P.H.

(Secundus: D. A. HUNTER.)

Representing Donors of Sums from £5 and less than £5,000.
HOWARD PIM, C.B.E.

Representing the Methodist Church of South Africa :
REV. A. A. WELLINGTON.
(Secundus : REV. T. STANTON.)

Representing the Church of the Province of South Africa :
REV. J. B. M. GRIMES, M.A.

*Representing the International Committee of the American
Y.M.C.A. :*

REV. MAX YERGAN, M.A.

Principal of the College ex-officio :
ALEXANDER KEIR, M.A.

Chairman : PROFESSOR G. F. DINGEMANS, M.A.

Vice-Chairman : M. G. APTHORP, B.A.
University of Fort Hare
Together in Excellence

Standing Committee :

(To be appointed at the first meeting of the Council as constituted under the Higher Education Act No. 30, 1923.)

Executive :—

DR. N. MACVICAR
REV. A. CARDROSS GRANT
M. G. APTHORP, B.A.
THE SENIOR REPRESENTATIVE OF SENATUS
THE PRINCIPAL.

Representatives on Water Board :—

THE PRINCIPAL
PAUL GERMOND.

Staff.

PRINCIPAL ...		ALEXANDER KERR, M.A. (Edin.)
English	DAVID J. DARLOW, B.A. HONS. (Lond.)
Logic, Psychology,	}	O. C. JENSEN, M.A. (Edin.) Ph.D. (Wit.)
Ethics, Economics,		
Latin ...	}	DAVIDSON D. T. JABAVU, B.A. (Lond.)
Bantu Studies		
Mathematics ...		W. T. MURDOCK, B.A. (R.U.I.)
Physics & Chemistry		CLIFFORD P. DENT, M.Sc. (S.A.)
Biology	MISS ALICE LYLE, M.Sc. (S.A.)
Education ...		THE PRINCIPAL.
Afrikaans & English		MISS BEATRICE D. TOOKE, B.A. (S.A.)
History & English		MISS MARY DICK, M.A. (Edin.)
Commerce ...		J. THABISO MOHAPELOA.
Agriculture ...		PAUL GERMOND. Dipl. in Agriculture (Elsenburg.)
		University of Fort Hare <i>Together We Advance</i>
		A. W. FRANCIS (Assist. Farm Manager.)
		EMMANUEL TEFO (Farm Assistant.)
Bursar	REV. J. LENNOX, O.B.E., M.A. (Edin.)
Clerk in Principal's Office		PHILIP RAMOLAHLOANE.

ANGLICAN HOSTEL :

Warden : ... RT. REV. C. J. FERGUSON-DAVIE M.A., D.D. (Bp.)

PRESBYTERIAN HOSTEL

Warden & Theological Tutor : REV. J. LENNOX, O.B.E., M.A.

METHODIST HOSTEL :

Warden & Theological Tutor : REV. A. J. COOK, B.A.

College Hostel : ... MRS. JABAVU.

Dining Hall : ... G. H. G. DUNLOP.

MEDICAL OFFICER :

NEIL MACVICAR, M.D., D.P.H.

AUDITOR :

J. W. M. WILLIAMSON, C.A., Grahamstown.



THE DINING HALL, FORT HARE.

The Senatus.

Officers for 1934.

Chairman :

THE PRINCIPAL.

Members :

W. T. MURDOCK (*Vice-Chairman*).

P. GERMOND.

D. J. DARLOW.

O. C. JENSEN.

C. P. DENT.

RT. REV. BP. FERGUSON-DAVIE.

MISS LYLE.

REV. J. LENNOX.

MISS DICK.

D. D. T. JABAVU (*Secretary*).

REV. A. I. COOK

MISS B. D. TOOKER

DR. MACVICAR

} Representing
the Council.

COMMITTEES :

A. *Board of Studies :*

THE PRINCIPAL.

W. T. MURDOCK.

D. D. T. JABAVU.

MISS LYLE.

O. C. JENSEN.

D. J. DARLOW.

B. *Library Committee :*

D. J. DARLOW (*Convenor*).

MISS LYLE.

W. T. MURDOCK.

THE PRINCIPAL.

C. Committee of Wardens :

RT. REV. BISHOP FERGUSON DAVIE,
 REV. J. LENNOX.
 REV. A. J. COOK.
 THE PRINCIPAL.

D. Committee on Theological Studies.

THE PRINCIPAL.
 REV. J. LENNOX.
 REV. A. J. COOK.
 RT. REV. BISHOP FERGUSON DAVIE.

E. Editors of College Calendar and Publications :

D. J. DARLOW.
 MISS B. D. TOOKE.
 THE PRINCIPAL.

F. Representatives on Finance Committee of S.R.C.

W. T. MURDOCK (*Treasurer*).
 D. D. T. JABAVU.
 D. J. DARLOW.
 C. P. DENT.

General Information.

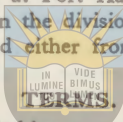
SCOPE AND OBJECT.

The College is designed to provide a liberal education of University standard, and also training for those who wish to qualify themselves to enter upon one of the learned professions or to follow Agriculture, Commerce, Industries or Domestic Arts.

Native, Coloured and Indian students, both men and women, are admitted.

SITUATION.

The College is situated at Fort Hare, half a mile from the railway station of Alice, in the division of Victoria East, Cape Province. Alice is reached either from King William's Town or from Cookhouse.



The College year is divided into two sessions of two terms each. The first session in 1934 commences on Friday, February 23rd, and ends on Thursday, June 21st. The second session commences on Friday, July 20th, and ends on Wednesday, December 12th.

All students must make arrangements to stay away from College during summer and winter vacations unless arrangements can be made for them to work on the farm.

ADMISSION OF STUDENTS.

1. All students when making application for admission must satisfy the College authorities as to character, by forwarding a certificate granted by a minister of religion or the responsible head of the school last attended, who shall also certify the stage of attainment reached by the candidate.
2. Admission forms may be had by candidates on application to the Principal. These forms, duly filled in and accompanied by certificates of character and attainment, should be returned without delay. Candidates will then be notified in due course if their applications can be entertained.
3. All entrants are required to indicate the vocations for which they intend to prepare.

4. Students are required to justify their choice of Course and grouping of subjects to the Board of Studies before they enter upon their classes.

5. Reports on the progress and conduct of the students are sent out to parents twice yearly, in June and December.

6. The usual time for enrolling is at the beginning of the College year in February. Only in exceptional circumstances will students be admitted after classes have been arranged.

7. Students of the Methodist, Anglican and Presbyterian denominations will be assigned to their respective hostels. Students of other denominations should state in their application form which hostel they wish to reside in and effect will be given to their wishes as far as the available accommodation allows. *No student will be allowed to change his denomination or his hostel while at College.*

FEES.

All Fees are payable in advance, i.e. at the beginning of each quarter on account of which they are due. Dates for paying fees are

- (1) First day of Session.
- (2) First day of May.
- (3) First day of August.
- (4) First day of October.

Students whose accounts are not settled within the first fortnight of each quarter are liable to suspension from their classes till their accounts are paid. This regulation is strictly observed.

In the event of a student's leaving before the completion of a quarter no refund of fees will be made unless in respect of a full month.

Cheques and Money Orders should be made payable to *The Bursar*, S. A. Native College. Cheques must include exchange.

INCLUSIVE FEE : The inclusive fee for students in attendance upon all courses is £7 10s. per quarter or £30 per annum, viz., £10 for Tuition, £16 for Board, £3 10s. for Hostels including Medical Attendance and Laundry, 5s. for Administration and 5s. for Students' Societies.

For Post Matriculation Science Students, the following laboratory fees are additional :

Premedical Students : Inclusive fee of £4.

Chemistry : 30s. per annum.

Zoology : 25s. " "

Botany : 15s. " "

Physics : 10s. " "

A Caution Fee of £1 is required of all Science Students. This is returnable if no breakages are charged against the student.

EXAMINATION FEES.

Matriculation	}	7s. 6d. per subject. Maximum £1 15s.
		Registration Fee 10s.
B.A.	}	25s. per subject.
College Diploma Diploma in Education		Registration Fee £1.

MEDICAL ATTENDANCE.

All students are medically examined upon entrance and are enrolled subject to the receipt of a favourable report from the Medical Officer.

The fee for medical attendance does not cover operations or attendance for dentistry.

GENERAL REGULATIONS.

1. Students are required to take part in practical indoor or outdoor work.
2. Students on production of a certificate signed by the Principal travel by rail under certain conditions at reduced fares. When making application students should notify the Principal of the name of the nearest Railway Station and also the class in which they wish to travel. Railway concession certificates are available to College and for return home. The forward journey must be completed by the day on which the term opens.
3. Students wishing to study Music must make their own arrangements for tuition. A piano has been provided to enable such students to practise. A charge of half-a-crown per quarter is made for the use of the piano.

ANGLICAN HOSTEL.

The Church of the Province has made provision for a temporary hostel which accommodates thirty students. The Warden is the Rt. Rev. Bishop Ferguson-Davie, M.A., D.D.

PRESBYTERIAN HOSTEL.

In the hostel erected by the U.F. Church of Scotland and the Presbyterian Church of South Africa, there is accommodation for 40 students. The Warden is Rev. J. Lennox, O.B.E., M.A.

METHODIST HOSTEL.

In the hostel erected by the Methodist Church of South Africa there is accommodation for 50 students. The Warden is Rev. A. J. Cook, B.A.

COLLEGE HOSTEL.

This hostel is for women students and will accommodate 20. It is in the charge of Mrs. Jabavu.

THE "CHRISTIAN UNION."

On June 27th 1930 the "Christian Union" was formally opened. This building is a gift of the Young Men's Christian Association of North America and is an earnest of that Association's interest in the work being done among the Bantu students and people of South Africa by Mr. Max Yergan. The building was made possible by an initial gift of £5,000 by Mr. John D. Rockefeller, Jr., to which sum were added other contributions of the White and Negro races of America. It is a substantially constructed building containing an assembly hall, social and reading rooms, large and small committee rooms, office accommodation, several dormitory rooms and other facilities for the special purposes of the building.

The purpose of this latest addition to the buildings at Fort Hare is several fold. In addition to providing accommodation for the College Chapel, the daily assembly and other public meetings of the College, it will house all student meetings and in its social and reading rooms furnish a common centre for the student body. Secondly it is planned to make this building the



THE PRESBYTERIAN HOSTEL, FORT HARE.

centre for a part, at least, of the social service work now being carried on by the Student Christian Association of the College among the Native people in the vicinity of Fort Hare. Thirdly the building serves as general headquarters of the Native section of the S.C.A. of South Africa and for some time will be the centre from which will be developed the proposed Y.M.C.A. work to be carried on amongst both the rural and the urban Bantu population. In the fourth place, it is in the plan of the leaders of the S.C.A. and the proposed Y.M.C.A. work to set up a course of training specifically for Y.M.C.A. workers and for Christian Social Service workers in general.



University of Fort Hare
Together in Excellence

Scholarships.

A. Scholarships in the Gift of the South African Native College.

I. THE GREENSLADE MEDICAL SCHOLARSHIP.

A Scholarship, worth £50 per annum, has been made available by a gift from the late Mr. F. J. Greenslade. It is to be granted by the Council of the South African Native College to a member of an aboriginal tribe who desires to study medicine.

It will be awarded upon satisfactory completion of the Pre-medical Science Courses at Fort Hare, and will be tenable for four or five years at an approved University.

Applications must be made to *The Principal*, South African Native College, Fort Hare.

II. THE REV. WILLIAM GIRDWOOD MEDICAL LOAN-SCHOLARSHIP.

A Loan Scholarship, worth £50 per annum for four years has been made available by Miss Girdwood for a First year Medical Student of Fingo or Xosa race domiciled in the Transkei.

III. NEW ZEALAND MEDICAL SCHOLARSHIP.

A Scholarship to cover the fees and maintenance of a South African Native student studying medicine, has been provided by the Student Christian Associations of New Zealand and will be tenable at the University of New Zealand.

IV. THE TENGO JABAVU SCHOLARSHIP.

A Scholarship, worth £5 per annum, has been made available from funds subscribed by friends of the late J. Tengo Jabavu, member of Council of the South African Native College. It will be awarded to a student entering College, who, in the opinion of the Senate, needs and is deserving of help, and will be tenable in the first instance for two years.



THE CHRISTIAN UNION, FORT HARE.

Applications must be made to *The Principal*, South African Native College, Fort Hare.

B. Scholarships tenable at the South African Native College, Fort Hare.

I. BUNGA SCHOLARSHIPS.

Fifty Scholarships of £30 each per annum are offered to students from the Territories of the United Transkeian General Council. Candidates, who must hold the Junior Certificate, should make application to their Magistrate or to the *Secretary of the General Council, Umtata*.

II. NATAL SCHOLARSHIPS.

Six (four for Natives and two for Indians) Scholarships of the value of £30 each per annum are awarded to students from Natal who hold the Junior Certificate. Candidates should make application to *The Chief Inspector for Native Education, Pietermaritzburg*.

III. BASUTOLAND SCHOLARSHIPS.

Two Scholarships of the value of £20 each per annum are awarded by the Resident Commissioner of Basutoland to students who hold the Junior Certificate. Applications should be made to *The Director of Education, Maseru*.

IV. TRANSVAAL SCHOLARSHIPS.

Two Scholarships of the value of £20 each per annum are awarded to students from the Transvaal who hold the Junior Certificate. Candidates should make application to *The Secretary of the Transvaal Education Department*.

V. ORANGE FREE STATE SCHOLARSHIP.

One Scholarship of the value of £20 per annum is awarded to a student from the Orange Free State who holds the Junior Certificate. Application should be made to *Chief Inspector of Native Education, Education Department, Bloemfontein*.

VI. GLEN GREY SCHOLARSHIP.

One Scholarship of the value of £30 per annum is awarded to a student from Glen Grey District who holds the Junior Certificate. Application to be made to *Magistrate, Glen Grey.*



University of Fort Hare
Together in Excellence

Entrance Qualifications.

The following classes of students are eligible for admission to the College.

1. *For all courses.*

Students who have matriculated at a recognised University, or who hold the School Leaving Certificate issued by the Joint Matriculation Board or an equivalent certificate issued by a Provincial Education Department.

For a limited period.

Students who hold the Junior Certificate of the University of South Africa, a Departmental Leaving Certificate or other equivalent certificate. (In preparation for a B.A. degree course the following subjects should be included in the Junior Certificate course,—English, Latin, Vernacular or Afrikaans, Mathematics, Physical Science or Biology.)

Together in Excellence

Students entering with a Junior Certificate must, before promotion, pass a College examination at the end of their first year.

2. *For a limited period.* Students who hold the Third Class Teacher's Junior (T3) Certificate of the Cape Education Department, the Natal *Second Grade* Native Teacher's Certificate, or other Teacher's Certificate judged to be equivalent, will be accepted for courses in Theology, Agriculture and Business.

Courses of Study.

A. Post Matriculation Courses.

1. Courses for the Degrees of the University of South Africa.
2. An Arts Course which includes Subjects selected from the following : English, Afrikaans, Bantu Studies, History, Mathematics, Chemistry, Physics, Zoology, Botany, Logic and Psychology, Ethics and Economics, leading to the College Diploma in Arts
3. A Higher Teachers' Course for students who have matriculated, leading to the College Diploma in Education, and/or to the University Higher Diploma.
4. Pre-Medical Course. The Subjects are Botany, Zoology, Chemistry, Physics. (Course in each Subject.)

B. Matriculation Courses.

1. *University Matriculation*.
For a limited period students who are eligible will be prepared for the Matriculation Examination of the Joint Matriculation Board.
2. *College Matriculation*.

A Course, designed for those who are preparing (a) for the Ministry, (b) to be Chiefs, (c) for Agriculture, (d) for Business, embracing English, Afrikaans, Bantu Studies, History, Mathematics, Elementary Natural and Mental Science, leading to the Matriculation Examination of the College.

C. Theological Courses.

The Methodist Church of South Africa and the United Free Church of Scotland Mission have established Theological Courses. For information with respect to these, address enquiries to the Theological Tutors.

Note.—Guidance is sometimes sought as to the courses suitable for different careers. The following notes may be useful to students intending to enter certain well-defined professions.



University of Fort Hare
Together in Excellence

WESLEYAN HOSTEL, FORT HARE.

A. The Ministry.

The College does not itself prepare students for the Ministry of the Christian Church, but courses are provided at two of the Denominational Hostels, the Methodist and Presbyterian. The course at the Methodist Hostel is at present of two years duration, and at the Presbyterian of four years, including one preparatory year spent mainly in general education. While carrying on their course of training, students are allowed to attend certain College classes and to work for one of the Matriculation Certificates or for a Degree or Diploma. Most advantage can be taken of the College classes when the theological student has passed the Junior Certificate. Application for admission to Theological Courses must, in the first instance, be made to the Theological Tutor, Methodist or Presbyterian Hostel, Fort Hare.

B. Medicine.

Those who wish to study medicine must first pass the Matriculation Examination of the Joint Board of the South African Universities. Thereafter, they may take the Premedical Course, i.e., First Year B.Sc. examinations in Physics, Chemistry, Botany, and Zoology, at Fort Hare. Passes in these subjects, and attendance at Fort Hare classes, are recognised by certain overseas Universities as exempting from Premedical or First Professional Examinations and classes. At present non-European students must be prepared to go overseas to complete their medical course.

C. Teaching.

Students who wish to train as teachers or to obtain an additional qualification must first take the Matriculation or Senior Certificate. They may then adopt one or other of two courses : (1) They may study for the Diploma in Education of the College, which is recognised by the Provincial Authorities and which, in addition to professional subjects, involves study as for the first year of the B.A., or (2) They may take the Degree in Arts and study for

the College Diploma in Education or for the University Higher Diploma (see p. 50), in a post-graduate year. As uncertainty sometimes exists as to the time that a student can spend at College, it is generally better to make sure of the professional certificate by adopting the first alternative, and to proceed to the Higher Diploma (Univ.) later if possible.

D. Civil Service.

New grades in the Clerical Division of the Civil Service are gradually being opened up to non-Europeans. One such new grade has been provided in the Native Territories of the Transkei. The pre-requisite for admission is *Matriculation*. Lower grades are available for those who have taken the Commercial Certificates of the Union Education Department. After August 1928, all persons admitted to the Civil Service must have passed in both official languages.

E. Agriculture. *Together in Excellence*

A demand exists for trained Agricultural Demonstrators, and it is possible that a type of field-officer will be called for at an early date. The three years Agriculture course at Fort Hare will be the best preparation for this new grade of civil servant. Splendid opportunities for practical work are now available on the College Farm and students get sound scientific training in well equipped laboratories as well as theoretical and practical training in field and animal husbandry.

UNIVERSITY OF SOUTH AFRICA.

Regulations for External Students.

1. Any person who—

- (1) is entitled to become registered as a matriculated student of the University; and
- (2) is not registered as an internal student of the University,

shall, subject to the provisions of paragraphs 2 and 3 below, be eligible for registration and for admission as an *external student* to examinations qualifying for degrees granted by the University.

2. A person who is not qualified to become registered as a *matriculated* student of the University may be admitted to such examinations as the Senate may determine, but such person shall not be eligible for any degree granted by the University, but shall be entitled to receive a certificate from the University specifying the examinations which he has passed.

3. A matriculated student who shall have been registered as an *internal student* at a Constituent College of the University shall be eligible for registration as an *external student*, provided he produces an *exeat* certificate from the authorities of that college deemed satisfactory by the Senate.

4. A registered matriculated student of any other South African University shall be eligible for registration as an *external student* provided that he produces from such University a certificate as to conduct deemed satisfactory by the Senate.

5. In place of paragraph 3 of the regulations for internal students the following shall apply in the case of *external students* :—

The Senate shall have the power in the case of an *external student* to accept examinations passed in any subject at any other University specially recognised by the Senate for the purpose, as exempting from examinations of the University in such subject for any degree of Bachelor, provided that no such student

shall be admitted to the degree of Bachelor unless he shall have—

- (a) passed such examinations as the Senate may determine ;
- (b) paid such fees as may be prescribed by regulation ;
- (c) complied in such other respects as the Senate may determine with the requirements for the degree.

6. The regulations with regard to courses of study and examinations as prescribed for internal students of the University shall hold, as far as they are applicable, for external students except as specified hereunder :—

- (a) The regulations **in respect** of attendance at a Constituent College shall **not apply** in the case of external students.
- (b) External students who do not attend any lectures of a Constituent College of the University shall receive no credit for class or other work done during the year, but shall be required to obtain the prescribed minimum on the University Examination alone.
- (c) External students who attend a full course of lectures at a Constituent College in any subject or subjects shall be required to take the same examination paper as the internal students in that subject or those subjects, and shall be credited with College record in the same way as internal students.
- (d) External students who are candidates for the degree of B.A. or B.Sc. (Pure Science) are required to pass the University Examination in the first or second course of a subject before being permitted to enter for the second or third course respectively of that subject ; and such students who, in their first year of study, have not passed the University Examination in at least three subjects or in any subsequent year in at least two subjects, shall receive no credit for the work of that year, provided that, when a student has passed the final examinations in his two major subjects, the latter part of this regulation shall not apply.

- (e) External students must lodge with the Registrar at the beginning of their course a curriculum record, showing the full curriculum proposed by them for the degree.

7. Special examination papers on syllabuses prescribed by the University* for B.A. and B.Sc. (Pure Science) shall be set for all external students, except those provided for under paragraph 6 (c) above.

8. External students shall be required to take their practical examinations in science subjects at a Constituent College centre, except where other arrangements have been especially authorized by the Senate.

Written examinations may be taken at any centre where a suitable Commissioner approved by the University, is obtainable; provided that, the Commissioner's fee and any other local expenses must be paid by the candidates concerned.

External candidates will be required to produce satisfactory evidence of practical (laboratory) training before being admitted to examination in any experimental science subject.

9. An external student shall not be admitted to examination in any subject for degree purposes until the expiration of one academic year from the time of his passing the matriculation examination.

10. An external student shall not be admitted to any degree unless the period of time which shall have elapsed since the date of his passing the matriculation or other examination qualifying for registration as a matriculated student shall have been not less than the minimum period of attendance required for admission to such degree of internal students of the University.

11. Every matriculated external student of the University is required to pay the registration fee of one pound upon the first occasion on which he enters for a University Examination, and to renew his registration by payment of a similar fee for

*See "Syllabuses for External Students" below.

every subsequent year in which a University Examination is taken by him.

12. Every external student shall pay the prescribed examination fees before being admitted to any examination and the prescribed graduation fee before being admitted to any degree (other than an honorary degree.)

13. The examinations for the B.A. and B.Sc. (Pure Science) degrees for external students (except those referred to in paragraph 6 (c) above) shall commence annually on the first day of December, unless the day is a Saturday or a Sunday, in which case the examinations shall commence on the first Monday of the month ; provided that practical examinations in Science subjects and papers common to internal and external students may have to be taken before that date.

14. External students who are candidates for any degree other than those of B.A. and B.Sc. (Pure Science), B.Com., and B.Econ. shall be required to follow the same syllabus and to take the same examination papers as internal candidates for such degrees.

(i) *Master's Degree.* External candidates for the Master's degree must have obtained the Bachelor's degree of the University, with the subject in question as one of their major subjects.

Arts, College Diploma and Pre-Medical Syllabuses.

Latin.

Course I.

First Paper. (150 marks).

Cicero : *De Senectute*

Vergil : *Aeneid III.* (Translation 35 p.c., Notes 15 p.c.,

General Questions 15 p.c.)

Outlines of Roman History to the death of Augustus (30 p.c.)

Knowledge of the elegiac couplet (5 p.c.)

Second Paper. (150 marks).

Unseen translation (50 p.c.) and prose composition (50 p.c.).

University of Fort Hare

English
Together in Excellence

Course I.

First Paper.

(a) History of English Literature in outline with special reference to Chaucer, Shakespeare, Milton, Pope, Keats, Wordsworth, Browning, Tennyson.

(b) The poems of Milton, Pope, Keats, and Tennyson, (omitting *In Memoriam*) contained in the *English Parnassus*, and Chaucer's *Prologue*.

Second Paper.

(c) Shakespeare : *Henry IV. Pt. I.*

(d) *Mrs. Gaskell to Henry James.* (World's Classics.)

(e) History of the English Language.

Third (Half) Paper.

(f) Essay-Writing.—The subject will be related to the work of the year.

N.B.—The scope of (a) is indicated by Gwynn, *The Masters of English Literature*, and biographies in the *English Men of Letters* series ; and of (e) by Wyld, *The Growth of English*.

Course II.

First Paper.

- (a) History of English Literature in the Nineteenth Century.
 (b) Chaucer, *The Pardoner's Tale*.

Second Paper.

- (c) Shakespeare with special reference to *Henry V*, *As You Like It*, *Macbeth*, *The Tempest*.

Third Paper.

- (d) Short Stories: *Series* (World's Classics.)
 (e) Shelley: *Adonais*. Lobban: *Selections from Tennyson and Selections from Browning*.

University of Fort Hare
 Together with Excellence

First Paper.

- (a) History of English Literature, 1558-1625.

Second Paper.

- (b) Shakespeare with special reference to *Hamlet*, *Antony and Cleopatra*, *Winter's Tale*, *Love's Labour's Lost*; Jonson: *Every Man In His Humour*.

Third Paper.

- (c) Hazlitt, *Characters of Shakespeare's Plays*; Sidney: *Apology for Poetry*; Shelley, *Defence of Poetry*; Coleridge, *Lectures on Shakespeare and Milton*. (Series 1811-12).
Life in Shakespeare's England (ed. D. Wilson, C.U.P.)

Fourth Paper.

- (d) English Phonetics (Hopwood: *S.A. English Pronunciation*. Juta).
 (e) A. J. Wyatt, *The Threshold of Anglo-Saxon*: Sweet, *First Middle-English Primer*.

M.A.

Section A. Linguistic.

Middle English :—Chaucer's Works, Langland's Works, Emerson's *Middle-English Reader*, Sir Gawayne and the Green Knight, The Pearl.

Wright : Elementary Mid-English Grammar.

Section B. Literary.

(ii) Middle English Literature to 1400.

(iv) 1558-1625. (vi) 1700-1784.

(vii) 1784-1832.

Section C. Criticism.

(a) Aristotle's *Poetics* ; (b) Longinus : *De Sublimitate* or Horace : *Ars Poetica* ; (c) Dante or du Bellay ; (d) Sidney or Lessing ; (e) Coleridge or Hazlitt.



University of Fort Hare
Hollands.
Together in Excellence

N.B.—“Hollands” omvat sowel Afrikaans as Nederlands. Dit staat 'n kandidaat vry om sig te bedien van Afrikaans as medium deur die hele eksamen. In die laaste geval moet die spelreëls van die Akademie gevolg word, soos te vind in die “Woordelys,” vir Nederlands die vereenvoudigde spelling of die spelling van De Vries en Te Winkel.

Streng eise sal gestel word met betrekking tot taal en spelling.

*Kursus I.**Eerste Vraestel:—*

(a) 'n Opstel van 1 uur. Die onderwerpe wat daarvoos. opgegee sal word, sal hoofsaaklik verband hou met litteratuurgeskiedenis en voorgeskrewe werke ; (b) Litteratuurgeskiedenis.

Die volgende werke word aanbeveel vir (b) :—

De Vooy's: Historiese Schets der Nederlandse Letterkunde (Wolters, Groningen) ; *E. Rypma* : Gids by die Studie der Nederlandse Letterkunde (Wolters, Groningen) ; *Prinsens* Beknopte Geschiedenis van de Nederlandse Letterkunde ; en

daarby, *Poelhekke*: *Woordkunst* (Wolters, Groningen); of as alternatief daarby, *Schoonees en Van Bruggen*: *Inleiding tot die Studie van Letterkunde* (De Bussy).

N.B.—Die kandidaat behoort minstens enige werke (romans drama's, gedigte) in hul geheel te lees.

Twede Vraestel:—

Voorgeskrewe werke

Voorgeskrewe werke:—

1. Boshoff-Dekker: *Bloemlesing van Maerlant tot Boutens.*
2. Malherbe: *Bloemlesing uit die Afrikaanse Letterkunde.*
3. Vondel: *Josef in Dothan.*
4. Leipoldt: *Die Heks*; Grasskopf: *As die Tuig Skawe.*
5. Scharren-Antinck: *Het Geuk hangt als een Druiventros.*
6. F. van der Heever: *Droogte.*

University of Fort Hare
Together in Excellence
Psychology.

Course I.—(One Paper).

Standpoint, definition, and methods of psychology; knowledge of one's own and other minds; general nature of mental process; structure and functions of the nervous system; relations between mind and body.

Reflex action; instinct; habit; volition; relations between instinct and intelligence.

Sensation; perception; memory and learning; imagination; conception; judgment and reasoning; thought and language; attention and interest; association and apperception.

Feeling; emotion; sentiment; development of sentiments and organisation of character.

Growth of self-consciousness; nature of the self.

Textbooks: McDougall, *Outline of Psychology*; Reyburn, *Introduction to Psychology*; further ref: Woodworth: *Psychology*.

*Course II.**First Paper.*

- (a) General Psychology.
- (b) Social Psychology.
- (c) Child Psychology.

Second Paper.

- (a) Psychopathology.
- (b) Experimental Psychology.

For full particulars apply to the Lecturer.

Textbooks: McDougal's *Outlines of Psychology*; McDougal's *Social Psychology*; Allport's *Social Psychology*; Butle's *Mental Development of the Child*; *Wheeler's Introduction to Abnormal Psychology*; *A First Laboratory Guide in Psychology*, Collens and Drever; *Experimental Psychology*, Collens and Drever.

University of Fort Hare
 Together with Excellence

Course I.

Nature and functions of logic; relation of logic to knowledge generally; laws of thought.

Kinds of terms; definition and division; kinds of proposition; import of categorical propositions; opposition of propositions; immediate inference; syllogism; validity of syllogistic reasoning; fallacies.

Principles of scientific method; observation and experiment; origination and verification of hypothesis; analogy; methods of induction; postulates of induction; scientific explanation; relation between induction and deduction.

Textbook: Welton and Monahan, *Intermediate Logic*.

Course II.—(Two Papers).

1. Knowledge as the mental construction of reality; relation of form to content of knowledge; judgment as the medium of knowledge; nature of judgment; types of judgment and their

relations to one another ; the elements of judgment, and its unity ; nature and functions of negation ; the conditions and forms of inference, deductive and inductive.

2. Nature and problems of metaphysics ; relation of reality to experience ; unity and individuation of reality ; reality and appearance ; problems of (a) qualities and relations, (b) change and causality ; concepts of matter, law and evolution ; relations between soul and body ; problem of the self ; problem of moral freedom.

3. A study of : Descartes, *Discourse on Method*, pts. i—iv, and *Meditations* (Everyman's Lib.) ; Berkeley, *Principles of Human Knowledge* (Everyman) and *Three Dialogues between Hylas and Philonous* (Open Court Philosophical Classics).

Textbooks ; Bosanquet, *Essentials of Logic* ; Taylor, *Elements of Metaphysics* ; Rogers, *Brief Introduction to Modern Philosophy* ; further ref: Rogers, *Student's History of Philosophy*.

University of Fort Hare

Together in Excellence

Ethics.

Course I.

Nature of ethics ; relation of ethics to conduct or practice.

Psychology of moral experience : want, desire, and will ; motive and intention ; habit and character ; freedom of will.

Moral judgment ; subject of moral judgment ; development of moral judgment.

Theories of the moral standard ; custom and law ; conscience and moral intuitions ; pleasure ; duty ; self-realization.

Moral order and progress ; the individual and society ; moral institutions, duties and virtues ; responsibility and punishment ; conditions of moral progress.

Textbooks : Mackenzie, *Manual of Ethics*.

Plato, *Republic*.



University of Fort Hare
TYUMIE BRIDGE FORT HARE.
Together in Excellence



TYUMIE BRIDGE, FORT HARE.

Course II.

1. *First Paper.* Nature of moral good; the good will; relation of good to pleasure and to desire; moral goodness a union of will and reason; character and development of the moral ideal; idea of a common good; the Greek and the modern conceptions of virtue; personal and social character of the good; practical and theoretical values of different moral theories; the grounds of moral obligation and moral responsibility; the various factors contributive to the moral experience; the individual and his social and cultural environment; relations between ethics and metaphysics.

2. *Second Paper.* A study of the following texts:

Aristotle, *Ethics*, books i, ii, iii, iv, v, vi, vii, viii, ix, x; Butler, *Three Sermons on Human Nature*, and *Dissertation upon the Nature of Virtue*, (Bell's English Classics); Mill, *Utilitarianism* (Everyman). Kant, *Fundamental Principles of the Metaphysic of Ethics*.
 Together in Excellence

Text-books: Green, *Prolegomena to Ethics*, book iii and book iv; Bradley, *Ethical Studies*, essays I—V. Reference: Rogers, *Short History of Ethics*.

Economics.

Course I.

- (i) Fundamental Concepts.
 (ii) Production (a) Land and Natural Forces, (b) Labour, (c) Capital, (d) Organisation or Management.
 (iii) Value.
 (iv) Mechanism of Exchange and Markets.
 (v) Distribution (a) Rent, (b) Wages, (c) Interest, (d) Profits, (e) Forms of Organisation of Factors of Production.

(For details see Univ. Cal. p. 376-8).

Text-books : Marshall, *Economics of Industry* ; Withers, *Meaning of Money* ; Clay, *Economics for the General Reader* ; Gide, *Political Economy*, Taussig: *Principles of Economics* ; Chapman, *Outlines of Political Economy*.

Politics.

Course I. (One Paper).

Scope of politics and its relations to ethics, sociology, and history.

Main theories of the origin, nature and function of the State : Plato, Aristotle, Hobbes, Locke, Rousseau ; Bentham, Hegel, Mill, Spencer.

Development of institutions of the family, social groups and types of society ; legal and administrative institutions.

Functions of modern government, legislative, judicial, executive, and administrative forms of modern government and types of constitution ; sovereignty, international relations.

Textbooks : Leacock : *Elements of Political Science* ; Pollock : *History of the Science of Politics* ; Jenks : *The State and the Nation* ; Lord : *Principles of Politics* ; Seeley : *Introduction to Political Science*.

History.

Course I. (One Paper).

- (a) General survey of European History from the Renaissance to 1871 (both included).
- (b) The constitutional development of South Africa in the nineteenth century.

(For text-books see the Univ. Cal., p. 360).

Course II.

First Paper. Mediæval History A.D. 800-1453.

Second Paper. English constitutional history in the seventeenth century with reference to printed collections of documents. (For text-books see Univ. Cal. pp. 360 & 362).

Mathematics.

Course I.—(Two Papers).

Algebra.—Surds Σn , Σn^2 , arithmetic, geometric and allied series. The quadratic function. Graphic and algebraic treatment of $y = \frac{ax^2 + bx + c}{px^2 + qx + r}$.

Mathematical induction. Binomial theorem for a positive integral index. Simple partial fractions.

Geometry.—(a) *Plane*: Theorems of Ptolemy, Ceva and Menelaus. Apollonius' circle. Harmonic section. Pole and polar with respect to a circle.

(b) *Solid*: Fundamental notions. Parallelism and perpendicularity of straight lines and planes. Dihedral angle. Polyhedra. Euler's Theorem. Regular polyhedra. Volume and area of prism, pyramid, cylinder, cone, sphere.

Trigonometry.—Trigonometric functions of an angle of any magnitude. Addition theorems. Functions of half-angles. Solutions of triangles. The Radian. General solution of equations. Ratios of small angles.

Analytic Geometry.—Straight line and circle in rectangular Cartesian co-ordinates.

Chemistry.

Course I. (One Paper and one Practical).

1. *Inorganic Chemistry*:

The constitution of matter. Atoms and molecules. Fundamental chemical laws. Principal methods of obtaining the volumetric composition of gaseous compounds. Methods of determining atomic and equivalent weights. Molecular weights of gases. Electrolysis and elementary notions of mass action, reversible reactions, chemical equilibrium. Dissociation, Allotropy. Solutions of gases and solids in water.

Classification of the elements. Elementary notions of the ionic theory of solutions. General laws of gases. Exothermic and endothermic reactions.

Combustion, structure of flame. Oxidation and reduction. Classification of oxides. Nature of acids, bases, salts. Chemical equations and calculations relating to weight and volume. Calculations of percentage composition and empirical formulae.

The chief sources, preparation, and properties of the elements and their more common compounds, in particular : Oxygen, hydrogen, water, hydrogen peroxide, ozone, nitrogen, atmospheric air, compounds of nitrogen and oxygen, nitric acid, nitrous acid, ammonia and ammonium compounds, the halogens and their hydrogen compounds, hypochlorites and chlorates, sulphur, sulphurous oxide and acid, sulphuric oxide and acid, hydrogen sulphide, carbon, oxides of carbon, methane, ethylene, acetylene, coal gas, carbon disulphide, boracic acid, silica, silicon fluoride, phosphorus, gaseous phosphorus hydride, phosphorus and phosphoric oxides, phosphorus tri-chloride and penta-chloride, phosphoric acids.

The principles of qualitative analysis.

A detailed study of the following elements as an introduction to the study of the metals : Sodium, potassium, calcium, copper, mercury, lead, arsenic, chromium, iron, manganese.

2. Practical Work :

Candidates will be expected to undertake the following work :—

(1) Qualitative analysis of a simple mixture, soluble in water or acids, involving separation of metals belonging to different groups only, and containing not more than four of the following radicals : Nitrate, nitrite, chloride, bromide, iodide, fluoride, sulphide, sulphate, carbonate, borate, silver, lead, mercurous, mercuric, bismuth, copper, cadmium, arsenious, antimony, stannous, stannic, aluminium, chromium, ferrous, ferric, zinc, manganese, nickel, cobalt, barium, strontium, calcium, ammonium, sodium, potassium.

(2) Simple preparations of inorganic substances in a state of purity.

(3) Simple gravimetric estimations, such as loss of weight on heating, determination of equivalents, etc.

(4) Simple volumetric estimations, with acids and alkalis.

3. *Organic Chemistry (for Medical and Agricultural Students).*

Classification of carbon compounds, marsh gas and its homologues, chloroform, methyl and ethyl alcohols and ethers, substituted ammonias and ammonium salts, formic and acetic acids, aldehyde, acetone, chloral, olefiant gas, acetylene, oxalic acid, lactic acid, tartaric acid, citric acid, fats and oils, saponification, glycerine, cellulose, sugars, starch, distillation of wood and of coal, benzene, benzoic acid, phenol, salicylic acid, oil of bitter almonds, hydrocyanic acid, cyanides, cyanates, thiocyanates, urea, uric acid.



Course I. (One paper and one practical).

Mechanics and Hydrostatics; Heat; Light; Magnetism and Electricity; Sound. *Practical Test: Hare*

Together in Excellence
BOTANY SYLLABUS.

Course I.

A general knowledge of :

1. The external morphology of the seed plants: different forms of stem, leaf and root with special emphasis on those modifications which are important from the ecological point of view: corms, rhizomes, bulbs, tubers, phylloclades and phyllodes, spines, tendrils: different forms of inflorescences and flowers, fruits and seeds.
2. The plant cell: the protoplasm with its nucleus and plastids; the vacuoles and their contents; the cell-wall; the multiplication of vegetative cells and the division of their nuclei (mitosis); free cells (unicellular organisms, zoospores of the Algae, the non-motile spores of the Fungi, pollen-grains) and the tissue cells of seed plants (parenchymatous, collenchymatous and sclerenchymatous cells, tracheids and vessels, sieve tubes, wood and phloem fibres, cork cells).
3. The internal structure of the seed plants: structure and

- arrangement of primary tissue in stem, leaf and root of a Monocotyledon (e.g. *Zea*) and of a Dicotyledon (e.g. *Helianthus*); changes due to the activity of the wood-cambium and of the phellogen in a gymnosperm (e.g. *Pinus*) and a Dicotyledon (e.g. *Quercus*).
4. The principles of plant physiology: the principal constituents of the plant body; transpiration and the absorption of water and of the nutrients contained in it; the assimilation of carbon dioxide by plants possessing chlorophyll; storage and transport of carbohydrates, oil and protein; respiration and fermentation; growth; phototropism and geotropism.
 5. The ecology of South African seed plants; hydrophytes, mesophytes and xerophytes; phototropism and various kinds of parasitism; the bacterial symbiosis of the Leguminosae; mycorrhiza; insectivorous plants; pollination by wind, insects and birds; dispersal of fruits and seeds; germination; vegetative propagation.
 6. Structure, propagation and economic importance of the Bacteria; saprophytic and parasitic forms; methods of sterilisation; structure, life-history and ecology of a few fresh-water Algae (*Chlamydomonas*, *Spirogyra*, *Vaucheria*); structure, life history and ecology of a few Fungi (*Saccharomyces*, *Mucor*, *Pythium* or another parasitic fungus, *Agaricus*); structure and vegetative propagation of a lichen; the structure and life-history of a moss (*Funaria*), and of a homosporous Pteridophyte (*Asplenium* or *Aspidium*); and of a heterosporous Pteridophyte (*Selaginella*) the structure of the pollen sacs and of the ovule, and the process of fertilisation in a Gymnosperm (*Pinus*) and in an Angiosperm (*Lilium* or an equivalent type).
 7. General characters of Dicotyledons and Monocotyledons, and of a few families belonging to them, viz., Aizoaceae, Rununculaceae, Cruciferae, Crassulaceae, Asclepiadaceae, Leguminosae, Rosaceae, Umbelliferae, Labiatae, Solanaceae, Compositae; Liliaceae, Amaryllidaceae, Iridaceae, Gramineae.

8. Economic Botany illustrated by plants belonging to the families studied; food plants (cereals and other plants with edible fruits or seeds; vegetables; food plants for stock); plants yielding products of economic importance such as wood, fibre, gum, oil, sugar, starch, tannin, alkaloids.

The Practical Examination will deal with all sections including interpretation of experiments under section 4. The candidates will have to show moreover their acquaintance with the use of the microscope and with a few simple microchemical tests for starch, cellulose, and lignin, and they must know how to make sections through stems, leaves, and roots for the study of their internal structure.

Text-Books—Lowson :

Freksch and Salisbury :

Textbook of Botany;



An Introduction to the Study of

Plants.

(b) *An Introduction to the Struc-*

University of Fort Hare

Together in Excellence

ture and Reproduction of

Plants.

Cavers: *Practical Botany.*

Zoology.

Course I.

(One written paper and a practical examination).

The Elements of Anatomy, Histology, and Physiology as exemplified by the frog or rabbit.

2. The distinguishing characters of the following groups and of the sub-divisions mentioned under each with a special knowledge of the morphology, physiology, and reproduction of the types specified :—

(a) *Protozoa*—

Rhizopoda (*Amoeba* or *Entamoeba*).

Mastigophora (*Euglena*, *Trypanosoma*).

Infusoria (*Paramecium*, *Vorticella*).

Sporozoa (*Plasmodium*).

(b) *Coelenterata*—

Hydrozoa (*Hydra*, *Obelia*, or other Leptoline).

Anthozoa.

(c) *Platyhelminthes*—

Trematoda (*Fasciola* or *Schistosoma*).
Cestoda (*Taenia*).

(d) *Nemathelminthes*—

Nematoda (*a Nematode*).

(e) *Annelida*—

Polychaeta.
Oligochaeta (*Lumbricus*).

(f) *Arthropoda*—

Crustacea (*Palinurus* or *Astacus*).
Insecta (*Locust* or *Cockroach*, and the general characters of the chief orders of insects, with special reference to South African forms).

(g) *Mollusca*—

Gasteropoda (*Helix*).
Lamellibranchia

(h) *Vertebrata*—

Pisces (*Scyllium* or *Acanthias*).
Amphibia (*Rana* or *Xenopus* or *Bufo*).
Reptilia.
Aves.
Mammalia (*Lepus* or other type).

3. The fundamental facts as to the structure and functions of the cell. The elements of embryology—structure of the germ cells, maturation, fertilization, segmentation, germinal layers, as illustrated by *Amphioxus* and the frog.

4. An elementary knowledge of evolution, variation, heredity, natural selection, and degeneration.

5. An elementary knowledge of the local fauna, as represented under different environmental conditions such as vleis, veld, sea-shore or forest.

6. Candidates must be prepared to dissect, to examine microscopically, and to describe or identify specimens or parts of the animal listed in italics in paragraph 2. They may also be expected to refer typical examples of the groups named to their proper systematic position.

Text-books—Borrodaile : *Manual of Zoology.*

Wells and Davies : *Textbook of Zoology.*

Dakin : *Elements of General Zoology.*

Gilchrist and von Bonde : *Practical Zoology.*

The general trend of the course will be on the lines of Dakin's book.

AFRICAN STUDIES.

1. Language.

1. Grammar and simple phonology.
2. Simple translation into and from the language.
3. Simple test in five compositions.

Half the paper shall have a grammatical-phonological tendency and a sub-minimum of 40% should be obtained in this section.

Course II.

1. More advanced grammar and phonology and introduction to Bantu Philology, the scope of the questions on Bantu Philology to be that of Werner : *Introductory Sketch of Bantu Languages.*
2. Set books, not of great difficulty, with questions involving translation or retranslation of the text, questions on the subject-matter and on the language of such books.
3. Free composition ; an essay, letter, dialogue, etc., of about a page-and-half in length.

Course III.

- (a) Phonetics of the language. The nature and classification of the sounds, Intonation.
- (b) The morphology and syntax of the language in detail and with references to other (especially neighbouring) Bantu languages.

- (c) Translation of passages of an advanced nature into and from the language.
- (d) An essay of about 300 words in the language.
- (e) Outline of the study of the African language-families, the scope of the questions to be that of Werner : *The Language Families of Africa*.
- (f) A survey of the literature of the language. Some knowledge to be shown of the subject matter of three or four works with some appreciation of different styles of writing. Some acquaintance with the traditional literature such as tales, fables, proverbs, riddles, etc.

(See also University Calendar).

2. Social Anthropology.

Course I. (With special reference to S. Africa.)

University of Fort Hare

- (a) The family and the clan. *Excellence in Lineage.*
Kinship systems and terms of relationship. Behaviour patterns.
- (b) Position of women. Marriage. Bride-price. " Houses." Succession and inheritance.
- (c) Orders and grades in society. Age-grades and initiation. Status of the individual and of the family.
- (d) Clans and totemistic classes. Political organisation of the tribe. Position and functions of the chief. Officials and their functions. Tribal and family councils. The social and political will.
- (e) Law. Sanctions. Jurisprudence and judicial practice. Property, movable and immovable. The individual and the community in law. The ethical and religious background of jurisprudence.
- (f) Religion. The religious and ritual background of society. Magic, white and black. The powers of nature. Ancestor cults. The supreme spirit. Taboos. The priesthood. Family, clan, and tribal ritual.

Course II. (With special reference to S. Africa.)

- (a) Forms of social structure and the classification.
- (b) The family and kinship. Forms of the family, kinship systems, relationship terms and behaviour patterns. Matrilineal and patrilineal descent. The clan. Exogamy. Forms of marriage and marriage customs.
- (c) Law, its origin and development. Sanctions. Types of offences. Punishment and condonation. Judicial authority. Jurisprudence and judicial procedure.
- (d) Ritual, its social functions and background. Types of ritual. Ritual and stages of life. The priest in ritual.
- (e) Religion. The supreme deity. Lesser spirits. Ancestor cults. Animism. *Mana*. Fetishism. Mythology. Taboos. Sacred acts.
- (f) The political organization of the society. The central authority. Local authorities. The general will. Councils. Officials and their functions. Types of political structure.
- (g) The culture-complexes of Africa. Different types of society in Africa. Culture-streams and culture-contacts.
- (h) The detailed study of one tribe or group of tribes in Africa.

3. Ethnic History of Africa.

Course I. (With special reference to South Africa.)

- (a) The early inhabitants of South Africa.
- (b) The Bushman tribes. Theories of their origin. Their wanderings and displacement.
- (c) The Hottentot tribes. Theories of their origins, their migrations and later wanderings. Relationship of Hottentot with Bushmen and Bantu.
- (d) The Bergdama. Their origin and present ethnic position.

(e) The Southern Bantu.

- (i) Theories of the origin of the Bantu. Affinities of the Bantu peoples. Main divisions of the Bantu. Streams of migration and culture-contacts of the Southern Bantu.
- (ii) Ethnic history of the Southern Bantu, in outline, by sub-groups, as follows :—
 - (a) The south-western sub-group (Herero, Ndonga, etc.)
 - (b) The south-central sub-group.
 - (i) The "Mashona" tribes (Karanga, Manyika, etc.)
 - (ii) The Suto-Chuana tribes (Chuana, Pedi, Suto, etc.)
 - (iii) The Venda and Lemba tribes.
 - (c) The south-eastern sub-group.
 - (i) The Nguni-BaMbo peoples (Zulu, Xosa, Fingo, etc.)
 - (ii) The Thonga peoples (Thonga, "Shangaan," etc.)

Course II. (with reference to Africa generally).

- (a) Classification of the peoples of Africa : Racial : Negro, Negrillo, Negroid, Mediterranean, etc.
Cultural : Culture-zones, culture-complexes, culture-streams. Linguistic : Sudanic, Nilotic, Hamitic, Bantu, Bushman, etc. Intra-African and extra-African theories.
- (b) Ethnic history of the main tribal groups of Africa, in outline. Origins, migrations, and culture-contacts of the main groups of peoples in Africa. The opening-up of Africa by alien races.
- (c) Detailed study of the ethnic history of one South-African sub-group.

M.A. in African Studies.

Prerequisite :—

Candidates presenting themselves for examination for the above Degree must have taken at least one course in a Bantu language and one course in Social Anthropology for the B.A. Degree, or, alternatively, must present themselves for examination in these courses concurrently with the papers for the M.A. Degree.

Provided that the Senate may, in special cases, upon the recommendation of the African Studies Committee, dispense with one of these two prerequisites.

The Degree may be taken in (A) Language, (B) Anthropology, or (C) Administration.

(A) *Language.*

Language offered as main subject	2 papers.
Second Language offered as subsidiary subject	1 paper.
Comparative Bantu Philology in Excellence	1 paper.
Philology of non-Bantu Languages of Africa	1 paper.

In addition a Dissertation must be offered dealing with an approved topic within the field of African Linguistics.

(B) *Anthropology.*

Ethnology of a tribe or tribal group selected for special study	1 paper.
Ethnology of a tribe or tribal group selected for more general study	1 paper.
Ethnology of the Bantu-speaking tribes in general	1 paper.
Ethnology of the non-Bantu-speaking African peoples in general	1 paper.
Either (a) Outlines of Physical Anthropology with special reference to Africa	
or (b) Archaeology of Africa	
or (c) Technology with special reference to Africa	
or (d) Comparative Native Administration of Africa	1 paper.

In addition a Dissertation must be offered, dealing with an approved topic within the field of African Anthropology.

(C) *Administration.*



University of Fort Hare
Together in Excellence

DEPARTMENT OF EDUCATION.

Higher Diploma in Education.

Two Courses in Education may now be obtained at the College.

I. POST-GRADUATE COURSE.

Higher Education Diploma of the University of South Africa.

At a meeting held at Potchefstroom on 29th March, 1932, the Senate of the University of South Africa adopted the following recommendations of a committee with regard to the recognition of the South African Native College, Fort Hare, as a training centre for the Higher Education Diploma.

(a) That the South African Native College be recognised as a training centre for the Higher Education Diploma in terms of regulation 7, page 268 of the 1931 Calendar of the University of South Africa.

(b) That the College lecturers in the Higher Education Diploma subjects be recognised as internal examiners for the Higher Education Diploma examination ;

(c) That the South African Native College be represented by at least one member on the Senate of the University of South Africa and on the Faculty of Education.

The Regulations are as follows :—

1. Candidates for admission to the Higher Diploma in Education must previously have been admitted to the degree or to the status of Bachelor in some Faculty of the University. No candidate will be admitted to the Higher Diploma who has not included as major or principal subjects in his previous degree two subjects which are capable of being offered as subjects of instruction in a secondary school or technical institution ; provided that, in place of one such major or principal subject, the Senate may, on cause being shown, allow the substitution of another teaching subject in which a minimum of two qualifying courses has been taken : and provided also that, in place of two such separate teaching subjects, candidates holding the degree of B.A. (Fine

Arts) may, for the purposes of this regulation and of Regulation 3 (a) following, offer the single general teaching subject of the Fine Arts.

The subjects offered in terms of the previous paragraph shall be known as the candidate's principal teaching subjects.

2. The duration of the course shall be one complete academic year (i.e. a full course of lectures), entirely devoted to the course prescribed, subject to the modifications contained in paragraphs 4 and 5 below.

3. Every curriculum for the Higher Diploma in Education shall include the following subjects :—

- (a) Short courses, from the point of view of curriculum and method, in the candidate's two principal teaching subjects, these courses to consist of about thirty lecture-periods each and not to include work towards a Master's degree ; or, in place of the above and in the special case only of candidates holding the degree of B.A. (Fine Arts), an equivalent general course on the teaching of the Fine Arts.
- (b) Principles of Education ; Psychology of Education ; History of Education ; requiring more extensive reading than in the case of the Lower Diploma, evidence of which must be shown in examination.
- (c) Practical Teaching to the extent of at least thirty school days ; Language Work in one or both of the official language media ; Elocution ; Blackboard Work.
- (d) I. In the case of candidates holding degrees with a three-year curriculum, the examination will also include tests in the subjects of one of the following groups :—
 - (i) Hygiene and Physical Education ; and either Woodwork, or Sewing, or Music, or Drawing, (Compulsory for graduates in Pure Arts or Pure Science).
 - (ii) Shorthand and Typewriting. (Compulsory for graduates in Commerce).

II. In the case of candidates holding degrees with a four-year curriculum, the examination will include a test, if a satisfactory test has not already been passed, in one of

the following subjects : (i) Craftwork. (Compulsory for graduates in Fine Arts). (ii) First Aid. (Compulsory for graduates in Engineering).

4. Candidates who have taken one qualifying course in Education for the degree of B.A. or B.Sc. may be excused relevant portions of the above syllabus and the relative examination, but must, in all cases, add one other qualifying course from the B.A. or B.Sc. curriculum.

Application for such exemption shall be made at the commencement of the course.

5. Although the post-graduate course will cover *one* academic year only, as stated under paragraph 2 above, provision should be made, where possible, for the accumulation of experience during the undergraduate years by means of

- (a) attendance at demonstration exercises or discussions of educational problems;
- (b) attendance at selected schools for observation and practice;
- (c) practical training in elocution and phonetics, blackboard work, and (in the case of Science students) laboratory arts.

6. The Diplomas of successful candidates shall bear an endorsement showing the official language or languages through the medium of which the holders are qualified to give instruction, and the grade of the test in such language and languages.

There shall be a higher test and a lower test in each official language, and every candidate must pass in the higher test in at least one official language.

The examination shall consist of :—

- (1) an oral test, including any necessary phonetics ;
- (2) a written test—an essay of suitable type ;
- (3) a teaching test ;

all of which shall be judged only from the point of view of proficiency in the use of the medium.

7. No candidate shall be granted a Higher Diploma in Education unless he can produce evidence to the satisfaction of the Senate that he has taken a course of professional training of an equivalent standard at an approved institution.

8. University examinations will be held at the conclusion of the course covering all the professional part of the course; provided that elocution, blackboard work, and the subjects of Regulation 3 (d) above may be completed at any time by internal examination.

Candidates are required to pass in each separate subject of the examination, the minimum for a pass and the percentage of the total marks to be assigned to the College record, if any, in each subject being as follows :—

Percentage allowed for College Record.	Minimum for a pass in	
	(a) Univ. Exam.	(b) Univ. Exam. and College Record Combined
25	35	40

When a candidate fails in a portion of the examination, the decision as to the subjects to be repeated by him rests with the Dean of the Faculty, provided that failure to pass in more than one of the five principal sections of the examination involves re-examination in all these five sections. The five principal sections are: One principal teaching subject; the three subjects under paragraph 3 (b); and teaching tests.

Candidates who fail in one (subsidiary) subject only may be allowed a supplementary examination in such subject before the 30th June of the following year, provided they bear the cost of the examination.

Candidates who fail in one only of the five principal sections of the examination may be allowed a supplementary examination in June of the following year, under the same conditions.

Entries for such examination close on 31st March.

A candidate who obtains an aggregate mark of 63 per cent. or over in the full examination shall be entitled to receive a Diploma of the first class, provided that he obtains an aggregate of at least 60 per cent. in the five principal sections.

9. Any holder of the Lower Diploma in Education who subsequently obtains a degree may convert this Lower Diploma into a Higher Diploma by the satisfactory completion, at one and the same examination, of the following :—

- (1) The academic work and examinations prescribed in the two secondary school subjects.
- (2) A general paper on the Psychology of Education set for any constituent college.
- (3) A teaching test in each of the two secondary school subjects.

Candidates converting a Diploma under this paragraph must pass in all subjects at the same examination.

10. Candidates holding Bachelor's degrees other than those specially provided for in the above regulations will not be admitted to the Higher Education Diploma except by special permission of the Senate, which, if such permission is granted, shall inform the candidate of the conditions under which he may enter.

For Syllabuses consult University Calendar.

University of Fort Hare

Together in Excellence

II. UNDER-GRADUATE COURSE.

College Diploma in Education.

This is a Post-Matriculation Course for those who may not be able to complete the degree course.

Holders of the College Diploma in Education may convert this into the Higher Education Diploma of the University by satisfying the conditions of paragraph 9 above.

College Diploma in Education.

1. Prerequisite : Matriculation Certificate or equivalent.
2. Students who hold a teacher's certificate will take Course I. Others will take Courses I. and II.

Course I. (First Year.)

- (a) English Literature and Composition, Education, Psychology or Ethics as for the first year B.A., also Physiology and Hygiene and Biology as for College Matriculation.
- (b) Teaching and Organization.
 - (1) Principles of Education.
 - (2) Practice in teaching with discussions and criticism.
 - (3) Methodology : Scripture, Language, Number, History, Geography, Elementary Science, Agriculture and School-gardening, Music, Art.
 - (4) School and Class Management :
 - (i) Discipline, Play, Use of text-books and Library, Arrangement of class-room, Ventilation, Lighting, Registration.
 - (ii) School buildings, Types of Schools, Grading, Staffing, Accommodation, Furnishing and Decoration, Requisition of Material, School Accounts. Cleaning, Sanitation, Water Supply, Care of Grounds and School Gardens.
 - (iii) Principles underlying the construction of Time Tables and School Curricula.
 - (5) The School as a community centre.
 - (6) Provincial and Union Laws regulating educational administration.
3. All candidates must satisfy the Examiner in practical teaching.

Course II. (Second Year.)

- (a) Three approved subjects for second year B.A.
- (b) Teaching and organization. Course I, in greater detail and with special reference to secondary schools and curricula.
- (c) Practice in Teaching with discussions and criticism.



University of Fort Hare
Together in Excellence

Joint Board Matriculation.

(For Regulations see Matriculation Handbook.)

English.—A.

First Paper.

Questions on six books prescribed for general study. The books should be studied from a literary aspect. Annotations, etymological or other, save where necessary for an intelligent appreciation of the text, should be avoided.

Books for December, 1934, and February, 1935.

1. Shakespeare: *Midsummer Night's Dream*.
2. J. M. Barrie: *Dear Brutus* (Hodder & Stoughton).
3. Palgrave: *Golden Treasury*, Book IV.
4. Trollope: *Barchester Towers*.
5. Patterson: *The Man-Eaters of Tsavo* (Macmillan).
6. Henry & Treble: *A Round of Tales* (O.U.P.).

Books for December, 1935, and February, 1936.

1. *Romeo and Juliet*
2. *The Rivals* (Sheridan). O.U.P.
3. *A Pocket Book of Poems and Songs for the Open Air* (Travellers' Library, Cape.)
Reveille (p. 2); pp. 29-72; 97-104; 163-212; 264-284.
4. *The Memoirs of a Fox-hunting Man*: Sassoon (Faber Library).
5. Boswell's *Journal of a Tour in the Hebrides* (Chapman. O.U.P.)
6. *A Century of Essays* (Everyman).

Second Paper.

Section A.—An essay on one of six given subjects. (The essay should fill two or three pages of the answer book and should occupy about an hour.)

Section B.—Questions dealing with some or all of the following :—

- (1) A letter on some suggested topic.
- (2) Paraphrasing : précis.

- (3) The correct employment of words in sentences or in a continuous passage,
- (4) Syntax with special attention to analysis, word-order, *oratio recta*, *oratio obliqua*, sequence of tenses, concord, use of prepositions.
- (5) Outlines of Accidence; word formation.

English Literature.

(For School-Leaving Certificate only.)

Period of Literature for 1934; 1880-1930.

1. R. Desier: *The Barretts of Wimpole Street* (Collins).
2. *Poems of To-day, Second Series* (Sedgwick and Jackson).
3. J. B. Priestley: *The Good Companions* (Heinemann).
4. Conrad: *A Set of Six* (Benn).
5. J. Masfield: *Gallipoli* (Heinemann).
6. A. E. W. Mason: *Four Feathers*.

Period of Literature for 1935: Outlines of the History of English Poetry 1750-1880:

Prescribed pieces to be studied in connection with this course:—

1. Goldsmith's *The Deserted Village*.
2. Gray's *Elegy*.
3. Cowper's *Lines on the Receipt of my Mother's Picture*.
4. Crabbe's *Peter Grimes*.
5. Wordsworth's *Michael*, *The Happy Warrior*, *Resolution and Independence*, *Immortality Ode*.
6. Coleridge's *Ancient Mariner*, *Christabel*, *Kubla Khan*.
7. Byron's *Childe Harold*, *Canto IV*.
8. Shelley's *Adonais*.
9. Keats' *Isabella*, *The Eve of St. Agnes*.
10. Tennyson's *The Lady of Shalott*, *The Lotos Eaters*, *Morte d'Arthur*, *Ulysses*.
11. Browning's *Fra Lippo Lippi*.
12. Arnold's *Sohrab and Rustum*, *The Scholar Gipsy*, (*English Parnassus*, O.U.P.)

The questions on the prescribed works will deal with the subject-matter of the works and the lives of their authors and will mainly take the form of topics for short essays. Some choice of questions will be given.

Afrikaans.—B.

First Paper. (1½ hours.)

Prescribed Works. Questions involving a general acquaintance with the subject matter of *four* out of *six* works prescribed for general study.

(Candidates will be required to answer *one* question on each of the *four* books studied, and definite credit, to the extent of two-thirds of the marks, will be assigned to the subject matter of the answers given.)

Second Paper. (2 hours.) Language and Composition.

Section A.—Questions testing the candidate's ability in the practical use of the language.

(N.B.—Formal questions on grammar, and questions involving the correction of faulty forms of the language and the less common niceties of idiom, to be excluded.)

Section B.—An essay (of about 250 words, i.e. about one page) on one of *four* given subjects.

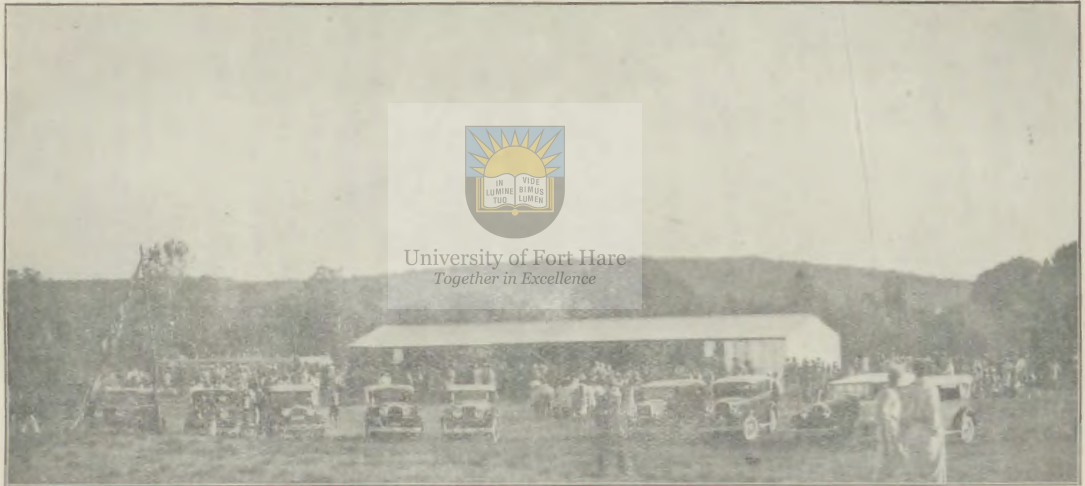
Section C.—Translation into the "A" language of a simple passage, or passages, of narrative in prose.

Section D.—Writing in the "B" language of a simple letter or narrative, the substance or headings of which have been set out in the "A" language.

Eerste Vraestel 1934.

1. Totius : *Rachel* (Die Weste, Potchefstroom).
2. Marie Linde : *Onder Bevoorregte Mense* (van Schaik, Pretoria).
3. Sangiro, van Bruggen en Maré : *Nuwe Afrikaanse Kortverhale* (De Bussy, Pretoria).
4. Eybers : *Outydse Sketse en Stories uit die ou Reisiger* (Maskew Miller, Kaapstad).

Fort Hare Agricultural Show.



University of Fort Hare
Together in Excellence

Eerste Vraestel 1935 :

1. Eugene Marais: *Gedigte*, (Nasionale Pers.).
2. Jonker: *Die Plaasverdeling*, (van Schaik).
3. W. Kamp: *Mattheo en Leonardo*, (van Schaik).
4. G. Dekker: *Grettir*, (de Bussy).

Latin :

Section A.—Translation of four passages. Five passages will be set—three from Caesar and two from Ovid—and Candidates may select any four (Total 140 marks).

N.B.—To test the candidates' knowledge of quantity, verses from "Metamorphoses" will be set for scansion.

Dec. 1934.—Feb. 1935

Ovid: *Metamorphoses*. Satchell & Rollo (J. C. Juta & Co.)

Extracts from the first three books—pp. 1-42.

Caesar: *Galic War*, Books I.-VI. Oxford Classical Texts.

Dec. 1935 and Feb. 1936:

Caesar: *De Bello Gallico I—VI*.

Ovid: *Selections*. Satchell and Rollo, pp. 43-83 (incl.)

Section B.—A choice of questions on the general contents of the works prescribed and on the life and times of the authors. (Not more than one question on each author or his works to be answered) (60 marks).

Section C.—(a) Accidence and syntax, based on the books prescribed (75 marks).

(b) Translation into Latin of short sentences based on the works prescribed (35 marks).

(c) Translation into Latin of a short continuous prose passage based on the works prescribed (40 marks).

N.B.—Mem. on Classics in Matric. Handbook.

Mathematics :

See Matriculation Handbook, pp. 28-35.

Physical Science :

(Physics and Chemistry) :

The use of the balance. Practical determination of volumes of rectangular blocks and cylinders. Direct determination of densities of solids and liquids ; measurements of volumes of vessels.

Elementary notions of force. Hooke's Law. Balancing of three forces at a point ; balancing of parallel forces ; the moment of a force. Elementary notions of work and energy (involving simple direct calculations only.)

Pressure of liquids and variation of pressure in a liquid with depth. Archimedes' principle ; determination of density of a liquid ; specific gravity of solids insoluble in water and of liquids. Weight and pressure of the air ; barometer ; Boyle's Law, with applications, for example, to suction.

Heat.

Heat and temperature ; chief sources and effects of heat. Temperature and its measurement ; mercurial thermometer, construction, graduation and use ; simple forms of maximum and minimum thermometers. Expansion of solids and liquids. Expansion and change of pressure of gases ; Charles' Law. Liquefaction and solidification ; melting points. Vaporisation and condensation ; pressure of water-vapour ; boiling points, effect of pressure ; distillation. Calorimetry ; specific heat, measurement in case of a solid ; latent heats of liquefaction and vaporisation, measurement in the case of ice and water. Conduction and convection of heat ; distinction between heat and radiant energy ; mutual conversion ; formation of dew.

Elementary Experimental Chemistry.

The characteristics of a pure substance. Distinction between pure substances and mixtures. Laboratory methods for the separation of the components of a simple mixture. Calculation of densities of mixtures, assuming the simple

mixture law. The study of chemical combination, including the synthesis of a pure substance from its elements. Elements and compounds.

The heating of metals in air. A brief historical study of the composition of the atmosphere. The discovery of oxygen. Lavoisier's theory of combustion. The preparation and properties of oxygen. Catalysis. Oxides of metals and of non-metals. The rusting of iron, its technical importance, and its prevention.

The laws of chemical combination by weight. The idea of equivalents, and the practical determination of equivalent weights. Symbols of the elements and the methods of representing chemical compounds by formulae. Calculation of the percentage composition of a compound from its empiric formula, given the atomic weights of the elements.

The preparation and properties of hydrogen.

The preparation of salts from metals, oxides, hydroxides or carbonates treated respectively. The determination of solubility. Solubility and equilibrium.

The gravimetric and volumetric composition of water. Gay Lussac's law of volumes. Avogadro's hypothesis, and its application in simple chemical calculations. Conception of the molecule. Molecular weights. The application of Avogadro's hypothesis to the determination of the formula of water from the volumetric composition of steam. The valency of common elements and radicles. The formulae of salts. The general properties of acids, bases and salts. Neutralization. The making of equations and their qualitative and quantitative meaning. Simple calculations bearing on equations involving weights of substances and volumes of gases.

A study of the element carbon, allometry.—The oxides of carbon, their preparation, properties and uses. The reactions taking place in a charcoal fire. Fire extinguishers. The combustion of a typical gaseous hydrocarbon. A study of the flame of a candle and of a Bunsen burner.

The study of the carbonate, bicarbonate, oxide and hydroxide of calcium. Natural waters, the hardness of water and its

removal. A study of chlorine and hydrogen chloride. A study of the atmosphere.

The preparation and properties of nitrogen and ammonia. The preparation, properties and uses of nitric acid and the common nitrates. Nitric acid as an oxidizing agent.

A study of the element sulphur and of hydrogen sulphide, sulphur dioxide and sulphur trioxide. The chemical properties and uses of sulphuric acid. A general outlined study of oxidation and reduction.

The experimental facts of electrolysis, including Faraday's laws. The general properties of metals, and the chemical distinction between metals and non-metals.

(In all parts of the course, stress should be laid on the exemplifications of physical processes in natural phenomena and in every-day life).

University of Fort Hare

Botany
Together in Excellence

Section A. Anatomy and Morphology.

Section B. Physiology and Ecology.

Section C. The Classification of Plants.

(For details see *Matric. Handbook* pp.—45-47.) Text books—Storey and Wright: *South African Botany*; Fritch and Salisbury: *Study of Plants.*)

Xosa, Zulu, Sesuto, Sechuana.

Section A.—Questions of accidentance and simple syntax which may be based on the prescribed works.

Section B.—Translation both from and into an official language of simple prose passages.

Section C.—Questions on the language and the content of the prescribed books.

Section D.—Composition (essay, narrative, dialogue, letter) of about one page to a page and a half of the answer-book.

(75 marks will be assigned to each section.)

Prescribed books for 1934.

- Xosa :** G. B. Sinxo ; *Nomsa* (2nd Ed. Lovedale Press.)
S. E. Mqayi ; *Ityala Lama Wele* (Lovedale Press.)
- Zulu :** M. J. Mpanza : *uGuqabadele* (Milne St., Durban.)
- Sesuto :** Z. Mangoela : *Har'a Libatana le Linyamatsane.*
- Sechuana :** A. J. Wookey : *Dico tsa Secwana* (Tiger Kloof Press).

Prescribed books for 1935.

- Xosa :** G. B. Sinxo : *Um-Fundisi wase-Mtuqwas* (Lovedale Press).
H. M. Ndowo : *U-Hambo luka-Gqoboka* (Lovedale Press).
- Zulu :** J. Stuart : *u-Baxweli* (Longmans.)
M. M. Fuze : *Abantu Abamnyama lapa bavela Ngakona* (City Printing Press, Maritzburg).
- Southern Sotho :** A. M. Sekese : *Pitso ea Linonyana* (Moriija Press.)
E. Segoete : *Raphepheng* (Moriija Press).
- Tswana :** R. Haydon Lewis : *Tshimologò ea Phuthegò ea ga Yesu Keresete* (Tiger Kloof).
Shakespeare : *Diphosho-phosho* (Moriija Press).

Book-keeping and Commercial Arithmetic :**Part I. Book-keeping.** (Three hours, 225 marks).

General introduction. Book-keeping by double entry as the essential basis of the study of affairs ; its nature, object and utility. The books used : Cash books, journal, ledger, sales-book, purchases-book, bill-book, and other subsidiary books. The balancing of books. Trial balances and preparation therefrom of profit and loss accounts, and balance sheets of individuals and partners. Elementary treatment of consignments, joint ventures, departmental accounts, and columnar book-keeping. Bills of exchange, reserves, depreciation, suspense accounts. Partnership accounts, including division of profits, admission of new partners, and goodwill.

Part II. Commercial Arithmetic. (One hour, 75 marks.)

Decimalization of money, weights and measures.

Metric system.

Discount, commission, brokerage, present value, compound interest (logs. may be used).

Rates and taxes, partnerships, distribution of profits. Stocks and shares. Foreign currencies of the chief commercial nations.

Shorthand and Typewriting.

(See Matriculation Handbook, pages 74-75.)



Part A.—South African History Circa 1775-1910.

Part B.—General History, 1763-1910.

(For details see Matric. Handbook pp. 35-37.)

University of Fort Hare
Together in Excellence

College Matriculation Examination.

(Regulations for Theological, Business, Agriculture, Chiefs' Course, Domestic Science and other students.)

I. SUBJECTS.

Group 1. *English* 4.

„ 2. (a) *Bantu Language* 2, (b) *Afrikaans* 2, (c) *Latin* 2
(d) *N. T. Greek* 2.

„ 3. (a) *Physics and Chemistry* 3.
(b) *Botany* 3.
(c) *Biology* 1.
(d) *Physiology and Hygiene* 1.
(e) *Agriculture* 1.
(f) *Agricultural Biology* 6.
(g) *Mathematics* 4.

„ 4. (a) *History* 2.
(b) *Geography* 2.
(c) *History and Geography* 2.
(d) *Psychology* 1.
(e) *Logic* 1.
(f) *Ethics* 1.
(g) *Economics* 1.
(h) *Sociology* 1.
(i) *Civics* 1.

„ 5. (a) *Church History* 2.
(b) *Theology* 2.
(c) *Old Testament Text* 1.
(d) *New Testament Text* 1.

„ 6. (a) *Business Methods* 2.
(b) *Bookkeeping* 2.
(c) *Shorthand* 2.
(d) *Typewriting* 2.
(e) *Commercial Arithmetic* 2.
(f) *Commercial History and Geography* 2.

- Group 7.
- (a) Cookery 2.
 - (b) Laundry 2.
 - (c) Dressmaking 2
 - (d) Millinery 1.
 - (e) Mothercraft 1.
 - (f) Kitchen-Gardening 1.
 - (g) Household Accounts 1.
 - (h) Nursing 1.

II.

GENERAL REGULATIONS

1. The numbers appended to names of subjects indicate the number of units possible in the subjects.
2. A unit generally means a subject pursued for one year for not fewer than two periods a week ; but in some subjects, such as English, Agriculture and Mathematics, the unit is more heavily weighted.
3. Students who have completed the Junior Certificate or equivalent may be granted credits up to a maximum of ten units.
4. Students will be held to have completed the Matriculation Examination when they have taken at least 20 units and passed the terminal tests. No student who fails at one stage of a subject will be permitted to go on to a further stage until he has secured a pass in the subject in which he failed.
5. Students taking two or three units of Physical Science must include at least one unit of Mathematics in their course.
6. Students taking History and Geography must not include either History or Geography as separate subjects in Group 4.

III.

REGULATIONS GOVERNING THE COURSES OF VARIOUS CLASSES OF STUDENTS.

1. *Theological Students' Course.*

Every Theological Student must take four units in Group 1, two Units in Group 2 ; (c) or (d) in Group 3 ; two Units in Group 4 ; one of (b) in Group 6 and ten additional Units.

For details of the Theological Course application should be made to the Principal.

2. *Chiefs' Courses.*

Every student in this course must take four units in Group 1, four units in Group 2, (c) and (d) in Group 3, (f) in Group 4, and six units from Groups 3, 4, and 6 but not more than four may be taken from Group 6.

3. *Business Course.*

Every student in this course must take four units in Group 1, two in Group 2, at least ten in Group 6, and (f) in Group 4.

4. *Agricultural Course.*

Every student in this course must take four units in Group 1, two in Group 2, eleven in Group 3, viz., two in (a), one in (b), one in (c), six in (d) and one in (e); (d) in group 4, two units in Group 6 of which one must be (b) and one (e).

5. *Domestic Course.*

Every student in this course must take four units in Group 1, two in Group 2, (c) in Group 3, (f) in Group 4, ten in Group 7, and two other units from 3, 4, or 6.

COLLEGE MATRICULATION EXAMINATION.

SYLLABUSES.

English, Bantu Studies, Afrikaans, History, Geography, History and Geography, Mathematics, Latin, Physics and Chemistry as for Matriculation of the Joint Board.

Physiology and Hygiene.

Course I. —Elementary Anatomy and Physiology (February-June.)

Course II. —Elementary Hygiene (July-December.)

Course I.

- (a) *Introductory.* Life and energy; the living organism and its environment; plants and animals; protozoa and metazoa; the living cell and its metabolism; growth and reproduction; tissues. The Animal Kingdom; Man.
- (b) General structure of the human body; skeleton; digestive, circulatory, excretory, nervous and reproductive systems; skin, muscles; the senses.
- (c) Functions of various systems with special reference to digestion and enzyme action; respiration, excretion and transport of materials in the body and the functions of blood. The nervous system; reflex action; co-ordination. Growth and reproduction; an elementary knowledge of sex and heredity.

Course II.

- Air**—impurities; ventilation; overcrowding; deep breathing; need of exercise and fresh air.
- Food**—elementary dietetics; classification of foods; vitamins; wholemeal bread; mealies; Kafir corn; peas and beans; tinned foods; fresh vegetables; fresh milk; amasi.
- Water**—sources; contamination; water storage and precautions to be observed; typhoid.
- Alcohol**—its influence on health. Tobacco and dagga.
- Dwellings**—site; dampness; cleansing; sanitation; ventilation; light.
- Personal Hygiene**—cleanliness; exercise; rest; sleep; manual work; care of teeth, of ears, and of eyes; the skin.
- Bacteria**—where found; fermentation and putrefaction; infectious diseases; typhoid; consumption; disinfection; sterilization; cleansing of food utensils; milk.
- Control of pests and vermin**—flies; mosquitoes; fleas; bugs; lice; "ticks"; rats and mice; rats and bubonic plague.

Man and Animals—diseases transmissible from animals to man ; the pig ; protozoan diseases.

First Aid—burns ; cuts ; fainting ; sunstroke ; nose-bleeding ; snake bite ; drowning ; some types of poisoning.

BIOLOGY.

1. The Nature of living material and the difference between it and the non-living.
2. Cells, Cell-division and the organisation of multicellular individuals and colonies.
3. Differentiation of tissues and their adaptation to specialized functions.
4. General morphology of a flowering plant and of a mammal.
5. Sources of energy among organisms. Nutrition, photosynthesis, respiration, fermentation, decay, enzymes.
6. Locomotion in animals and plants.
7. Systematic Biology.
8. Weeds and their control.
9. Outlines of evolution.
10. Maturation, fertilization and segmentation, metamorphosis, symbiosis.
11. Parasitism and saprophytism.
12. Biology of insects.

AGRICULTURE.

Field Husbandry.

Part I. (First Year.)

Soils.

Some general considerations ; soil forming processes ; geological classification ; the soil particle ; physical properties of the soil ; organic matter ; structure ; soil water ; air and water ; plant nutrients and their availability ; acid and alkali soils ; germ life of the soil ; nitrogen cycle.

Soil Management.

Sources of loss and gain to the cultivated soil ; tillage ; drainage and irrigation ; commercial fertilizers ; fertilizer ; constituents ; specific effect of nitrogen, phosphorus and potash ; soil amendments ; farm manures ; green manures.

Part II. (Second Year.)**Crops.**

Agro-geographical conditions in relation to distributions in South Africa ; the rotation of crops ; the history, classification and raising of the principal summer crops, the principal winter crops, and miscellaneous crops.

Part III. (Third Year.)**General :**

Dry-farming ; Seed selection and breeding ; Plant diseases, pests and weeds ; Farm-management ; Extensive and Intensive farming ; Cost of production ; Markets ; Co-operation and co-operative bodies ; Machinery and Implements.

Animal Husbandry.**Part I. (First Year.)****Principles of Breeding.**

Reproductive organs and germ cells ; prolificacy ; sterility ; estrum ; conception ; gestation ; parturition ; heredity ; Mendel's law ; monohybrids ; dihybrids ; selection in animal breeding ; character as unit of selection ; variation as basis of selection ; variation ; pedigree and selection ; performance and prepotency.

Systems of Breeding—Stud-breeding ; grading ; cross-breeding ; line-breeding ; in-breeding ; co-operative breeding ; formation of breeds ; improvement of breeds ; community breeding.

Farm Animals—

A study of the origin, history and description of the chief breeds of cattle, horses and pigs.

Part II. (Second Year.)

Feeds and Feedings.

Composition of foods ; function of food materials ; food requirements of animals ; nutritive ratio ; balanced rations ; palatability ; South African fodder crops and pastures ; Silage.

Beef Cattle—Characteristics of beef animals ; systems of beef raising ; management of herd ; economic feeding.

Dairy Cattle—Characteristics of the dairy-cow ; management of and feeding ; the calf ; management and feeding ; breeding for milk-production.

Horses—Horse-breeding as an industry ; breeding, feeding and management of horses and mules.

Pigs—Systems of swine raising ; feeding for gain ; economic types ; housing ; pests and diseases of the pig.

Sheep—History of sheep in South Africa ; mutton breeds ; history of the merino sheep ; types of merino ; breeding and management ; wool ; shearing and the treatment of the fleece.

University of Fort Hare
Part III. (Third Year.)

Specific Animal Diseases.

Causes, history and nature ; Symptoms, diagnosis and treatment of :

- (a) Some South African diseases caused by animal and vegetable parasites.
- (b) Caused by insects.
- (c) Caused by worms.
- (d) Caused by an ultra-visible virus.

General—Various ailments of domesticated animals ; Wounds and their treatment ; Farm-medicines and their administration
Parasitic pests ; Dipping.

Dairying—Milk, its production, composition and properties ; Cream-separation ; Butter-fat ; Butter-making.

Practical Work.

Students taking the College Matriculation in Agriculture are

required to do practical work in ploughing, cultivation, sowing, irrigation, harvesting, etc., and in fencing, the management of farm-animals and poultry, and in butter-making.

Elementary Philosophy.

Elementary Logic :

The aim of Logic. The name, the term, the concept and the laws of thought. The proposition. Division, definition, classification. Immediate Inference. The Syllogism. Induction. Scientific method. Fallacies.

Elementary Psychology :

Aim, scope and methods. Body and Mind. Consciousness. Interest and Attention. Cognition. Sensation, Perception, Imagination, Association, Memory. Conception, Reasoning, Feeling: Connection with cognitive and other processes. Action: Impulse, Instinct, Volition, Habit, Character.

Elementary Ethics : Together in Excellence

The definition, scope and method of Ethics. The Psychology of Conduct; Feeling, Desire, Motive, Intention, Will. Theories of the Moral Ideal. The Moral Life: Freedom and Responsibility, Temperance and Culture, Justice and Benevolence. The State.

Elementary Economics. (As for Business Course.)

Sociology.

- (i) Relation of the Individual to the State.
- (ii) Race relationship.
- (iii) Types of Government with special reference to South Africa.
- (iv) Local government.
- (v) Public Health: Town Planning and Housing, Water, Light, Sanitation.
- (vi) Public morals: Crime and Punishment.
- (vii) Treatment of Statistics.
- (viii) Community enterprises.

Civics.

(As for Business Course.)

Business Methods.

(As for Business Course.)

Commercial History.

(As for Business Course.)

Commercial Geography.

(As for Business Course.)

Commercial Arithmetic.

(As for Business Course.)

Book-keeping.

(As for Business Course.)

Shorthand.

(As for Business Course.)

Together in Excellence

Commercial Examinations and Syllabuses.

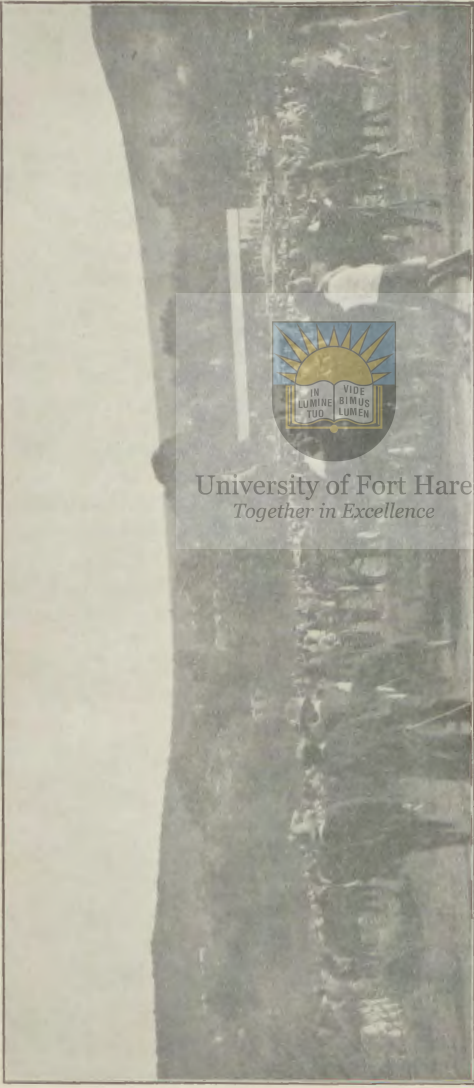
Students are referred to the handbooks issued by the Union Education Department.

The Certificates most suitable for Native students are :—

1. **The Junior Certificate in Commerce :** Entry to the course for this certificate is, in general, restricted to candidates who have obtained the Preliminary Commercial Certificate.
2. **The National Commercial Certificate :** A year's course after the Junior Certificate in Commerce.
3. **The Senior Certificate in Commerce :** A two years' course. This certificate is recognised, under certain conditions, for purposes of exemption from the Matriculation Examination.



Fort Hare Agricultural Show.



University of Fort Hare
Together in Excellence

College Library.

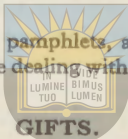
Library Committee.

D. J. Darlow, (Convener), W. T. Murdock, Miss Lyle, and the Principal.

Librarian : — — —

A Library, to which all students have access free of charge, has been formed.

Gifts of pictures, books, pamphlets, and periodicals of general interest, but especially those dealing with Native Life or Language, are welcomed.



The following gifts of Books, Pictures, etc., have been received since last issue of the *Calendar in Excellence*

Gifts of Books to the Library by

Mr. W. G. Bennie, B.A., late Chief Inspector of Native Education.

Miss Alice Werner, formerly of the International School of Oriental Languages, London.

Dr. R. Leigh, Reitz, O.F.S.

The University of Witwatersrand.

Sir Thomas Muir.

Professor Macmillan.

The following publishers of newspapers are thanked for weekly copies :—

Publishers of : *Imvo Zabantsundu.*

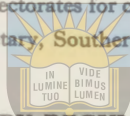
„ *Leselinyana.*

„ *Mochochonono.*

„ *The Bantu World.*

- Publishers of : *Umteteli wa Bantu.*
 „ *Ilanga lase Natal.*
 „ *Ixindaba za Bantu.*
 „ *Umsebenzi Womlimi Nomfuyi.*
 „ *The Servant of India.*

The Union Government is thanked for copies of the *Gazette*,
 The Chairman and Councillors of the Transkeian Territories
 General Council for copies of the *Bunga Proceedings*.
 The Governors and High Commissioners of various African
 States and Protectorates for copies of *Reports and Laws*,
 The Colonial Secretary, Southern Rhodesia, for *Year Book*
 and *Reports*.



LIBRARY REGULATIONS.

1. Books of Reference must not be removed from the Library.
2. No books may be retained for a longer period than two weeks.
3. The same book may be re-taken if available after an interval of 24 hours.
4. Duplicate slips must be filled in when a book is taken and one slip placed in the book.
5. Returned books with the duplicate slips in them must be placed on the Librarian's table.
6. Only one book should be taken out at a time.
7. Books lost or damaged must be replaced to the satisfaction of the Principal.

College Societies.

STUDENTS' REPRESENTATIVE COUNCIL.

1. *Aims.*

This Council shall be :—

- (a) The intermediary between the students and the Senatus ;
- (b) The controlling body over all societies and clubs of students ;
- (c) The body responsible for the issue of the College Magazine ;
- (d) The body for electing from the students, subject to the approval of the Principal such censors as may be required for the session ;
- (e) The body for promoting the best interests of the students.

University of Fort Hare

Together in Excellence

2. *Membership.*

The Council shall consist of :—

- (a) One representative from each of the following :—
S.C.A., Athletic Union, Literary Society ;
- (b) Two representatives elected by Post Matriculation students only, by ballot ;
- (c) Five representatives elected by open ballot among all students.

Note. Only students of at least one session's standing have the right to vote.

3. *Officers.*

- (a) The office-bearers, comprising : President, Vice-President, Secretary and Assistant Secretary, shall be elected annually from among the representatives by the representatives ;
- (b) The President and the Secretary (*ex-officio*) and two members elected by the Council shall represent it on the Finance Committee.

4. Procedure.

- (a) The Council shall meet on the first Thursday of each month ;
- (b) An emergency meeting may be called on such occasions as the Council may find necessary ;
- (c) The Council shall convene a Mass Meeting of College students if a requisition to the Secretary be signed by at least ten students.

5. Elections.

- (1) The elections under Sec. 2, Clauses (b) and (c) shall be arranged by the Council and those under Sec. 2. Clause (a) by the several clubs and societies themselves ;
- (2) The members shall be elected in September of each year to hold office during the next academic year ;
- (3) The office-bearers for the next academic year shall be elected immediately after the elections.

6. General.

- (1) The estimates of the various societies and clubs shall be brought by their respective representatives before the S.R.C. for approval ;
- (2) The Council shall arrange for an Old Students' Reunion every decade ;
- (3) All societies and clubs shall submit their constitutions before being recognised by this Council as constituent bodies ;
- (4) Audited financial statements shall be presented by the representatives of the respective societies and clubs at the end of each academic year ;
- (5) All minute books of the various societies and clubs under the S.R.C. shall be handed to the Secretary at the end of each academic year ;

- (6) A social gathering shall be arranged at the beginning of each academic year ;
- (7) This constitution may be added to or amended as occasion arises at any Mass Meeting comprising at least two-thirds of the enrolled students of the College, and by a majority of two-thirds to one-third of the members present, provided that notice of such motion be handed to the Secretary in writing, and posted up, at least a fortnight beforehand ; but no alteration of the constitution shall become effective until it has received the written approval of the Senatus.

FORMER STUDENTS' UNION.

Students on leaving the College may on application be enrolled as members of this Union. They will be entitled to subscribe to and receive such Magazine or Circular as the Students' Council may issue. Information as to their whereabouts and doings will always be welcomed by the Editor.

Together in Excellence

STUDENTS' REPRESENTATIVE COUNCIL 1934.

President	E. Mancoba
Vice-President	V. Kwinana
Secretary	M. Moerane
Assistant Secretary	A. Mayeza

Representing :

Post Matriculation	J. E. Tsekiso
	H. Mjamba
S.C.A.	M. Moerane
Literary Society	S. Coopan
Athletic Union	S. T. Sukati
All Students	E. Mancoba
	M. Ntja
	V. M. Kwinana
	E. Mesatywa
	A. Mayeza

COLLEGE MAGAZINE.

Editors	H. Mjamba, S. Coopan
Secretary	E. Mesatywa
Sports Reporter	S. T. Sukati
Publishers	D. Mosena, A. Ntshona

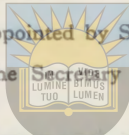
FINANCE COMMITTEE.

(a) Nominated by Senatus :

Rev. D. J. Darlow	Mr. D. D. T. Jabavu
Mr. W. T. Murdock (Treas.)	Mr. Dent

(b) Appointed by S. R. C.

The President and the Secretary (ex-officio), M. Ntja, and E. Tsekiso.

**THE LITERARY SOCIETY.**

University of Fort Hare

Main Object

(1) To aid its members in developing fluency of expression in public speaking by prepared and impromptu addresses as well as discussions.

(2) To foster a taste for the best literature and to bring enlightened discussion to bear on vital questions of the present and future.

Meetings are held on Saturday evenings.

The sessional programme is usually varied by a Social evening, a Lecture and a Musical Entertainment.

President	Miss M. Dick
Chairman	E. Mancoba
Vice-Chairman	S. Coopan
Secretary	M. Ntja
Assistant Secretary	H. Mjamba
Committee Members	M. Moerane, S. Rajuili, D. Zwakala

STUDENT CHRISTIAN ASSOCIATION.

This is affiliated to the world-wide inter-denominational movement known as the Student Christian Movement.

It is a voluntary organisation aiming at :

- (1) Winning students to real decision for God ;
- (2) Uniting them in seeking a fuller Christian life ;
- (3) Inspiring them to give themselves to lives of Christian service at home and abroad.

Weekly meetings are held on Friday evenings. In connection with the Association a free evening school has been arranged for servants of the neighbourhood. This is under the sole management of the members. Troops of Pathfinders, Wayfarers, and Pioneers are in operation.

President	Mr. C. P. Dent
Chairman	J. E. Tsekiso
Vice-Chairman	M. T. Moerane
Secretary	A. Maseza
Assistant Secretary	V. Mbobo

Conveners of Committees.

S. Sukati (Missionary)	B. Molaba (Bible Study)
V. Kwinana (Night School)	F. Mgobozi (Canvassing)
S. Bulube (Order)	C. Matshikwe (Library & Organ)
	N. Honono (Sunday School)

ATHLETIC UNION.

President	Mr. P. Germond
Vice President	V. Kwinana
Secretary	J. Matshiwe
Committee Members :	A. Phillips, S. T. Sukati, E. Mesatywa, L. Lusaseni

Cricket Sub-Committee.

E. Mesatywa (Captain)	W. Tsotsi (Secretary)
J. Matshikwe (Vice-Captain)	T. Ngcwabe, L. Lusaseni (Committee Members)

Soccer Sub-Committee.

W. Tsotsi (Captain)	S. Sukati (Secretary)
T. Ngcwabe (Vice-Captain)	V. Crutse, P. Sililo (Committee Members)

Rugby Football Sub-Committee.

J. Matshikwe (Captain)	R. Peterson (Secretary)
A. Phillips (Vice-Captain)	W. Tsotsi, V. Mboho (Committee Members)

Basket Ball.

Miss G. Quali (Captain)	Miss C. Jukuda (Secretary)
„ D. Mahlangeni (Vice Captain)	Misses M. Madapuna, M. Ntloko (Committee Members)

Tennis Sub-Committee.

E. Mesatywa (Captain)	L. Raditladi (Secretary)
A. Phillips (Vice-Captain)	E. Kuzwayo, D. Moikangoa (Committee Members)

University of Fort Hare
Together in Excellence

MUSICAL AND DRAMATIC ASSOCIATION.

President and Conductor	Miss B. D. Tooke
Chairman	E. Kuzwayo
Secretary	Miss D. Mahlangeni
Committee Members	M. Moerane, A. Ntshona

BANTU STUDIES SOCIETY.

Purpose : To foster the study of the various aspects of Native life, past and present.

The Society meets one Saturday evening each month in conjunction with the Literary Society.

President :	Mr. D. D. T. Jabavu
Chairman :	E. Mjamba
Vice-Chairman :	A. Mayeza
Secretary :	A. Ntshona
Vice-Secretary :	E. Mathu
Committee :	J. Bam, Miss Ntloko

College Record.

MASTER OF ARTS (UNIVERSITY OF SOUTH AFRICA).

Donald Mtimkulu, M.A. (English) 1931
Samuel Oppelt, M.A. (Philosophy) 1932

BACHELOR OF ARTS.

Zachariah Matthews, B.A.,	1923
Milner Kabane, B.A.,	1924
Thomas Carey, B.A.,	1926
Alfred Ferreira, B.A.,	1926
Samuel Oppelt, B.A.,	1926
Benjamin Mahlasela, B.A.,	1927
Donald Mtimkulu, B.A.,	1927
Gertrude Ntlabati, B.A.,	1927
Henry Gannon, B.A.,	1928
Zobeida Gool, B.A.,	1928
Mildred Kay, B.A.,	1929
Wilberforce Joshua, B.A.,	1929
Cecil Accom, B.A.,	1930
Arthur Lazarus, B.A.,	1930
Weaver Ncwana, B.A.,	1930
Cecilia Nikani, B.A.,	1930
John M. Noah, B.A.,	1930
Bennie Mashologu, B.A.,	1931
Isaiah Oldjohn, B.A.,	1931
Selby Ngcobo, B.A.,	1931
Johannes Shembe, B.A.,	1931
James J. R. Jolobe, B.A.,	1932
George B. Molefe, B.A.,	1932
Frank N. Lebentlele, B.A.,	1932
Ellen P. Ngozwana, B.A.,	1932
George Singh, B.A.,	1932

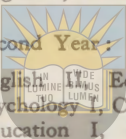
First Year :

Matthews, Zachariah — English I, Latin I, Mathematics I,
Logic I, 1921

Kabane, Milner	— English I, Latin I, Mathematics I, Ethics I,	1922
Gumede, Innes	— English I, Latin I, Mathematics I, Ethics I,	1922
Ntlabati, Gertrude	— English I, Education I, Ethics I, Psychology I,	1922
Morolong, Berenice	— English I, Education I, Psycho- logy I,	1923
Gool, Zobeida	— English I, Education I, Psycho- logy I,	1923
Ferreira, Alfred	— English I, Education I, Psycho- logy I, Ethics I,	1923
Oppelt, Samuel	— English I, Mathematics I, Chemis- try I, Ethics I, Education I,	1924
Carey, Thomas	— English I, Education I, Chemistry I, Ethics I,	1924
Sikutshwa, Theophilus	— English I, Latin I, Education I,	1924
Gool, Janub	— English I, Latin I, Education I, Ethics I,	1924
Goetham, Daniel	— English I, Latin I, Education I, Ethics I,	1924
Mtimkulu, Lionel	— English I, Chemistry I, Education I, Ethics I,	1924
Mahlasela, Benjamin	— English I, Education I, Chemistry I,	1924
Bokwe, Frieda	— English I, Education I, Psychology I, Chemistry I,	1925
Marillier, Arthur	— Physics I, Zoology I,	1925
Mtimkulu, Donald	— English I, Education I, Psychology I, Chemistry I,	1925
Gannon, Henry	— English I, Education I, Mathematics I, Ethics I, Chemistry I,	1926
Kumalo, Nathaniel	— English I, Latin I, Ethics I, Chemis- try I,	1926
Joshua, Wilberforce	— English I, Botany I, Psychology I,	1927
Kay, Mildred	— English I, Education I, Botany I,	1927

- Mancotywa, Harry — Roman Law I, Roman Dutch Law I,
Constitutional Law I, South African
Criminal Law I, 1927
- Ncwana, Weaver — Education I, Mathematics I, Chemis-
try I, 1927
- Noah, John M. — English I, Psychology I, Education I,
Mathematics I, 1927
- Oldjohn, Isaiah — English I, Bantu Studies I, Psycho-
logy I, Education I, 1927
- Accom, Cecil F. — English I, Psychology I, Chemistry I,
Physics I, 1928
- Gcwensa, Arthur — English I, History I, Zoology I,
Ethics I, 1928
- Jolobe, James J. R. — English I, Psychology I, Ethics I,
Zoology I, 1928
- Lazarus, Arthur D. — English I, Ethics I, Psychology I, 1928
- Molefe, George B. — English I, Psychology I, Zoology I,
Ethics I, 1928
- Nikani, Cecilia — English I, Psychology I, Mathematics I,
Physics I, 1928
- Bopela, Pascoe — English I, Chemistry I, Psychology I,
Mathematics I, 1929
- Cingo, Reginald — English I, Ethics I, Zoology I, Psycho-
logy I, 1929
- Demas, Charles — English I, Chemistry I, Logic I, Ma-
thematics I, Psychology I, 1929
- Mashologu, Benjamin — English I, Chemistry I, Ethics I, 1929
- Moerane, Fraser — English I, Chemistry I, Psychology I,
Soc. Anthropology I, 1929
- Mtimkulu, Laughton — English I, Chemistry I, Psychology I,
Social Anthropology I, 1929
- Ngcobo, Selby — English I, Chemistry I, Social Anthro-
pology I, 1929
- Shembe, Johannes — English I, Chemistry I, Ethics I,
Psychology I, 1929
- Jijana, J. — English I, Ethics I, Physics I, 1930
- Lebentlele, Frank — English I, Botany I, Psychology I, 1930

Leqela, M.	— English I, Psychology I, Chemistry I, 1930
Makae, J.	— English I, Psychology I, Social Anthro- pology I, Physics I, 1930
Moeletsi, J.	— English I, Psychology I, Social Anthro- pology I, Chemistry I, 1930
Moshesh, J.	— English I, Psychology I, Ethics I, Social Anthropology I, 1930
Mtshali, Birdsie	— English I, Ethics I, Mathematics I, Chemistry I, 1930
Ngozwana, Ellen	— English I, Ethics I, Social Anthro- pology I, Botany I, 1930
Ntshona, Nozipo	— English I, Psychology I, Zoology I, Ethics I, Xosa I, 1930
Ntwasa, Templeton	— Social Anthropology I, Psychology I, Zoology I, 1930
Singh, George	— English I, Chemistry I, Mathematics I, Psychology I, 1930
Coopan, S.	— English I, Psychology I, History I, Chemistry I 1931
Dhlamini, A. W.	— Psychology I, Zoology I, Zulu I, 1931
Khomo, Gilbert	— English I, Psychology I, Chemistry I, 1931
Mashupye, Stephen	— Psychology I, Mathematics I, Chemis- try I, 1931
Mosaka, P. O.	— English I, Chemistry I, Mathematics I, Ethics I, Psychology I, 1931
Qwelane, H.	— Psychology I, Chemistry I, Zoology I, 1931
Rajuili S. S.	— Psychology I, Chemistry I, Mathema- tics I, 1931
Tsoebebe, A. M.	— English I, History I, Sesuto I, 1931
Yako, Harvey	— English I, Psychology I, History I, Botany I, Zoology I, 1931
Hlabangana, Cephas	— English I, Psych. I, Hist. I, 1932
Jordan, A. C.	— English I, Latin I, Ethics I, Psych. I, Zoo. I. 1932
Hliso, Joash	— English I, Xosa I, Ethics I, Zoo. I, 1932

Kwinana, Vayeke	— English I, Latin I, Psych. I,	1932
Mancoba, Ernest	— English I, Logic I, Psych. I, Hist. I,	1932
Moerane, Manasseh	— English I, Latin I, Psych. I, Physics I,	1932
Phooko, S. Teboho	— English I, Sesuto I, Psych. I, Maths. I, Chemistry I,	1932
Jhuria, Ramfakir	— English I, Psych. I, Hist. I, Physics I, Chemistry I,	1932
Zwakala, Drummond	— English I, Latin I, Logic I, Chemistry I,	1932
Mjamba, Harry	— English I, Latin I, Logic I, Xosa I,	1932
		
Matthews, Zachariah	— English I, Education I, Ethics I, Psychology I, Chemistry I,	1922
Kabane, Milner	— Education I, Chemistry I, Psycho- logy I,	1923
Gool, Zobeida	— English II, Latin I, Economics I, Zoology I, Logic I, Econ. Hist. I,	1924
Ferreira, Alfred	— Chemistry I, Economics I, — Ethics II, Economics II, Logic I, Economic History I,	1924 1925
Ntlabati, Gertrude	— English II, Logic I,	1925
Oppelt, Samuel	— English II, Logic I, Psychology I,	1925
Carey, Thomas	— English II, Psychology I, Mathe- matics I, Logic I,	1925
Sikutshwa, Theo.	— Bantu Studies I, Ethics I, — Logic I, Chemistry I,	1925 1926
Gool, Janub	— English II, Psychology I, Econo- mics I, Economic History I,	1925
Goetham, Daniel	— English II, Logic I, Psychology I, Chemistry I,	1925
Mahlasela, Benjamin	— Ethics I, Bantu Studies I, Chemis- try I, — English II, Psychology I,	1925 1926
Mtimkulu, Donald	— English II, Latin I, Mathematics I, Ethics I,	1926

Gannon, Henry	— English II, Logic I, Psychology I, Zoology I, 1927
Joshua, Wilberforce	— English II, Mathematics I, Education I, Zoology I, 1928
Kay, Mildred	— English II, Psychology I, Ethics I, Zoology I, 1928
Oldjohn, Isaiah	— English II, Ethics I, Chemistry I, 1928
Noah, John M.	— Ethics I, Chemistry I, 1928 — English II, Psychology II, Ethics II, 1929
Ncwana, Weaver	— Ethics I, Zoology I, 1928 English I, Psychology I, Economics I, Social Anthropology I, Latin I, 1929
Molefe, George	— Ethics II (1st Cl.), English II, Psycho- logy I, Social Anthropology I, 1929
Jolobe, James	— English II, History I, Social Anthro- pology I, 1929
Gcwensa, Arthur	— Botany I, Social Anthropology I, Economics I, 1929
Accom, Cecil	— English II, Logic I, Ethics I, 1929
Lazarus, Arthur	— English II, Botany I, Logic I, Econo- mics I, Latin I, 1929
Nikani, Cecilia	— English II, Economics I, Chemistry I, Social Anthropology I, Latin I, 1929
Mashologu, Ben	— English II, Social Anthropology I, Politics I, Psychology I. 1930
Moerane, Fraser	— English II, Psychology I, Ethics I. 1930
Ngcobo, Selby	— English II, Ethics I, Politics I, Mathe- matics I, Psychology I. 1930
Shembe, Johannes	— Politics I, Social Anthropology I, Physics I. 1930
Cingo, Reginald	— Constit. Law I, Roman Dutch Law, S. A. Criminal Law, 1930
Jijana, E. G.	— Zoology I, Xosa I, Psychology I, 1931
Lebentlele, Frank	— English II, Psychology II, Sesuto I, Zoology I, 1931
Makae, Joel	— English II, Ethics I, Logic I, Sesuto I, 1931

Moshesh, J. D.	— English II, Ethics II, Logic I, Chemistry I,	1931
Ngozwana, Ellen	— Psychology I, Zoology I, Xosa I,	1931
Singh, George	— English II, Ethics I, History I, Logic I, Zoology I,	1931
Demas, Chas.	— Mathematics II, Ethics I,	1931
Bopela, Pascoe	— English II, Latin I, Logic I, Ethics I,	1932
Coopan, Somarsundram	English II, Latin I, Ethics I, Hist II, Maths. I,	1932
Dhlamini, Amos	— English I, Logic I, Soc. Anth. I,	1932
Ntshona, Nozipo	— English II, Ethics II, Psych. II, Botany I,	1932
Jijana, Ebenezer	— Native Languages I, Soc. Anth. I,	1932
Mashupye, Stephen	— English I, Latin I, Ethics I, Logic I, Zoo. I,	1932
Moeletsi, Joas	— Sesuto I, History I,	1932
Mosaka, Paul	— Latin I, Hist. I, Soc. Anth. I,	1932
Rajuili, Solomon	— English I, Latin I, Ethics I, Sesuto I,	1932
Yako, Harvey	— Xosa I, Ethics I, Soc. Anth. I,	1932

Third Year :

Matthews, Zachariah	— English III, Education II,	1923
Kabane, Milner	— English II, Ethics II, Education II, Logic I,	1924
Carey, Thomas	— English III, Latin I, Logic II,	1926
Ferreira, Alfred	— English III, Political Science I,	1926
Oppelt, Samuel	— English III, Latin I, Logic II,	1926
Ntlabati, Gertrude	— English III, Latin I, Logic II, Botany I, Economics I, (1927)	1926
Mahlasela, Benjamin	— Psychology II, Ethics II, Logic I,	1927
Mtimkulu, Donald	— English III (Class I,) Ethics II, (Class I,) Logic I,	1927
Gannon, Henry	— Logic II, Ethics II, Physica I,	1928
Goetham, Daniel	— English III, Logic II,	1928
Gool, Zobeida	— English III, Economics II,	1928

Joshua, Wilberforce	— English III, Psychology II, Logic I, Latin I,	1929
Kay, Mildred	— English III, Psychology II, Logic I, Latin I,	1929
Oldjohn, Isaiah	— English III, Psychology II, Politics I,	1929 1930
	Ancient Phil. I, Social Anth. I,	1931
Accom, Cecil	— English III, Ethics II, Politics I, Latin I.	1930
Lazarus, Arthur	— English III, Psychology II, Poli- tics I,	1930
Ncwana, Weaver	— Ethics II, Psychology II, English II,	1930
Nikani, Cecilia	— English III, Zoology I, Psychology I, Ethics I,	1930
Noah, John M.	— Geography I, Xosa I,	1930
Jolobe, James	— English III, Ethics II,	1930
Molefe, George	— Logic I, History I, Zulu I,	1930
Cingo, Reginald	— Ethics II, Psychology II, Roman Law I,	1931
Mashologu, Bennie	— English III, Ethics II, Physics I, Se- suto I,	1931
Moerane Fraser	— English III, Ethics II,	1931
Ngcobo, Selby	— English III, Ethics II, Logic I,	1931
Shembe, Johannes	— Ethics II, Psychology II, English II, Logic I.	1931
Lebentlele, Frank	— English III, Sesuto II (Cl. I), Ethics I, Soc. Anth. I,	1932
Moshesh, Jeremiah	— English III, Psych. II,	1932
Ngozwana, Ellen	— English II, Xosa II, Ethics II, Psych. II,	1932
Singh, George	— English III, (Cl. I), Ethics II, Hist. II,	1932

BACHELOR OF SCIENCE.

1st Year.

Bulube, N. P.	— Chemistry I, Botany I, Zoology I,	1931
---------------	-------------------------------------	------

PRE-MEDICAL.

(First Year B.Sc.)

Marillier, Arthur	— Physics I, Zoology I,	1925
Blume, Emil	— Physics I, Chemistry I,	1926
Bramdaw, Shivajee	— Physics I, Chemistry I, Botany I, Zoology I,	1926
Ismail, Abdullah	— Physics I, Chemistry I,	1926
Ismail, Moseda	— Chemistry I, Botany I, Zoology I,	1926
Mahonga, Stewart	— Physics I, Chemistry I, Zoology I,	1926
Sosibo, William	— Physics I, Chemistry I, Zoology I,	1926
Lebentlele, Frank	— Physics I, Chemistry I,	1927
Mbuli, Enoch	— Physics I, Chemistry I, Botany I, Zoology I,	1927
Piliso, Clarence	— Chemistry I, Botany I, Zoology I,	1929
Khomo, Gilbert	— Physics I, Botany I, Zoology I,	1932

COLLEGE DIPLOMA IN ARTS.

<i>Licentiates :</i>	Edwin Ncwana, L.A.	1923
	George B. Molefe, L.A.	1930
	First Year.	
Ncwana, Edwin	— English I, Mathematics I, Logic I, Psychology I,	1921
Gcabashe, Walter	— English I, Ethics I, Bantu Studies I,	1926
	Second Year.	
Ncwana, Edwin	— English II, Education I, Ethics I, Economics I,	1922
	Third Year (Final).	
Ncwana, Edwin	— English III, Ethics II, Chemistry I,	1923

COLLEGE DIPLOMA IN EDUCATION.

Gertrude Ntlabati	1922
Rosebery Bokwe	"
Zobeida Gool	1923
Berenice Morolong	"
Attwell Madala	"

Alfred J. Ferreira	1923
Zachariah Matthews, B.A.	1924
Thomas Carey	"
Benjamin Mahlasela	"
Theophilus Sikutshwa	"
Milner Kabane, B.A.	1925
Janub Gool	"
Frieda Bokwe	1926
Samuel Oppelt, B.A.	"
Daniel Goetham	1928
Henry Gannon, B.A.	"
Wilberforce Joshua	"
Mildred Kay	"
Arthur Gwensa	1929
Bennie Mashologu	1930
Donald Mtimkulu, B.A.	"
Weaver Ncwana	"
Cecilia Nikani	"
Nozipo Ntshona	"
Cecil Accom, B.A.	1931
J. G. Shembe, B.A.	"
S. B. Ngcobo, B.A.	"
F. Moerane	"
Ellen Ngozwana,	"
George Singh	"
Harvey Yako	"
P. Bopela	1932
R. Cingo	"
A. W. Dhlamini	"
A. C. Jordan	"
F. N. Lebentlele	"
S. Mashupye	"
J. S. Moeletsi	"
J. Moshesh	"



University of Fort Hare
Together in Excellence

UNIVERSITY MATRICULATION CERTIFICATE.

Masiza, Hamilton
Mahlangeni, Felix

December

1918

"

"

McGillivray, Ian P.	..	1919
Matthews, Zachariah
Motebang, Calvin	December	1919
Mahlasela, William C.
Peters, Maurice	June	1920
Kabane, Milner
Jansen, Marthinus
Gumede, Innes	December	..
Bokwe, Rosebery
Carey, Thomas
Sikutshwa, Theophilus
Ntlabati, Gertrude	December	1921
Gow, Levi
Bolani, Abijah
Madala, Attwell	June	1922
Rooi, Frans van	June	1922
Ferreira, Alfred
Mtimkulu, Lionel (Cl. II.)	December	..
Mahonga, Stewart
Lekhoathi, Benjamin
Morolong, Berenice
Oppelt, Jappie
Oppelt, Samuel	..	1922
Thelejane, M.	..	1923
Goetham, Daniel
Mahlasela, Benjamin
Bokwe, Frieda	June	1924
Ismail, Moseda
Demas, Charles	December	..
Majombozi, Ebenezer
Mtimkulu, Donald Sydney
Naidoo, Govindasamy
Ngobese, James Percy
Marillier, Arthur	February	1925
Bramdaw, Shivajee	June	..
Du Randt, John
Terris, Jessie
Gannon, Henry G.
Dietrich, Ernest J.



University of Fort Hare
Together in Excellence

Kumalo, Nathaniel	"	1925
Maitin, Celi	December	1924
Ncwana, Weaver	"	"
Gcabashe, Walter	February (Senior Cert.)	1926
Mancotwya, Henry (Class I)	December	"
Moerane, Michael (Class II)	"	"
Msimang, Richard (Class II)	"	"
Blume, Emil	"	"
Gibb, Olaf	"	"
Ismail, Abdullah	"	"
Kirk, Richard	December	1925
Masiza, Ebenezer	"	"
Mbuli, Enoch	"	"
Noah, John Milton	"	"
Ntwasa, Clement	"	"
Kay, Mildred	December	1925
Dingiswayo, Moffat (Senior Cert.)	"	"
Yako, Hamilton	"	"
Oldjohn, Isaiah	February	1927
Lebentlele, Frank	"	"
Nikani, Cecilia (First Class)	December	"
Accom, Cecil (Second Class)	"	"
Piliso, Clarence (Second Class)	"	1927
Cingo, Reginald	"	"
Dhlamini, Chadwick	"	"
Mashologu, Benjamin	"	"
Mbali, George	"	"
Moeletsi, Joas	"	"
Msweli, Beatrice	"	"
Lazarus, Arthur	"	"
Gcwensa, Arthur (Snr. Leaving Cert.)	"	"
Bopela, Pascoe (Cl. II)	December	1928
Shembe, J. G. (Cl. II)	"	"
Moerane, Fraser	"	"
Mtimkulu, Laughton	"	"
Ntshona, Nozipo (Sen. Leaving Cert.)	"	"
Ngcobo, Selby	February	1929
Makae, Joel (Cl. II)	December	"



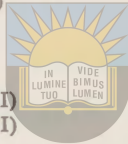
University of Fort Hare
Together in Excellence

Mtshali, Birdsey (Cl. II)	December	1929
Ngozwana, Ellen (Cl. II)	"	"
Jijana, Ebenezer	"	"
Leqela, Max	"	"
Mahase, Edwin	"	"
Mnyani, Colenso	"	"
Moshesh, Jeremiah	"	"
Mzoneli, Wellington	"	"
Tshandu, Tainton	"	"
Khomo, Gilbert	February	1930
Qwelane, Herbert	"	"
Xala, Gilbert	"	"
Mgudlwa, Slingsby	"	"
Yako, Harvey (Sen. Leaving Cert.)	"	"
Ntwasa, Templeton	"	"
Ntsihlele, Peacock (Sen. Leaving Cert.)	"	"
Mosaka, Paul (Class I)	December	1930
Kwinana, V. W. (Class II)	"	"
Jordan, A. C. (Class II)	"	"
Phooko, S. T. J. (Class II)	"	"
Mnyani, G. (Class II)	"	"
Rajuili, S. S. (Class II)	"	"
Nyangiwe, P. M. (Class II)	"	"
Kuzwayo, E. N.	"	1930
Mashupye, S. J. M.	"	"
Motshumi, T. J.	"	"
Rakale, D. K.	"	"
Bulube, N. (New Regulations.)	"	"
Sosibo, W.	"	"
Hliso, J. Y. (Snr. Leaving Cert.)	"	"
Le Grange, C.	February	1931
Tsoebebe, A.	"	"
Sililo, J. S.	"	"
Appavoo, S.	"	"
Carr, G. L. (Class II)	December	1931
Mjamba, H. (Class II)	"	"
Moerane, M. (Class II)	"	"
Ntusi, D. (Class II)	"	"
Ramathe, A. C. (Class II)	"	"



University of Fort Hare
Together in Excellence

Hlabangana, C.	December	1931
Mancoba, E.	"	"
Mpotulo, Mc.	"	"
Zwakala, D. D.	"	"
Jhuria, R. (New Regulations)	"	"
Samuels, H. C. (New Regulations)	"	"
Mohapelo, J. T. (Snr. Leaving Cert.)	"	"
Gcabushe, W.	"	"
Mona, A.	February	1932
Tshandu, H.	"	"
Dauids, J.	"	"
Mesatywa, Ezra W. (Cl. I)	December	1932
Ntja, Michael F. (Cl. I)	"	"
Tshiki, Lovett T. (Cl. I)	"	"
Bulube, Sandili (Cl. II)	"	"
Chiepe, Monametsi (Cl. II)	"	"
Kuali, Gertrude T. (Cl. II)	"	"
Mayeza, Albert (Cl. II)	"	"
Mokitimi, Seth (Cl. II)	"	"
Mzamane, Godfrey (Cl. II)	"	"
Toni, Morris (Cl. II)	"	"
Mahlangeni, Daisy	"	"
Maku, Percival	"	"
Matshikwe, Cecil	"	"
Mgudlwa, Halley	"	"
Mpitso, Henry	"	"
Peterson, Ronald W.	"	"
Qunta, Anders	"	"
Yako, Percival	"	"
Finca, Titus (Sen. Leaving Cert.)	"	"
Matshoba, Daniel (Sen. Leaving Cert.)	"	"
Mohapelo, Josias M. (Sen. Leaving Cert.)	"	"
Sililo, Percival T.	February	1933
Sukati, Samuel T.	"	"
Yako, Harvey N.	"	"
Lepolesa, S. Macfarlane	"	"
Ntshona, Adolphus G. (Sen. Leaving Cert.)	"	"



University of Fort Hare
Together in Excellence

COLLEGE MATRICULATION CERTIFICATE.

Newana, Edwin Mtobi		1919
Jolobe, Lennox		1922
Ngxwana, Columbus		1923
Miza, Gaza		"
Sikutshwa, David		"
Mnari, Samson		1924
Ndzotyana, Gilbert		1926
Jolobe, James		1927
Mathule, Achim	(Agriculture First Class)	"
Nthlakane, Seth	(Agriculture First Class)	1927
Molefe, George		1927
Pieterse, John		"
Mzimande, Africa		1928
Magooa, D. J.		"
Vabaza, L. M.		"
Hongo, J.		"
Kumalo, Ezra		1931
Mbete, P. S.		"
Njoloza, I.		"
Kraai, P. T.	(Agriculture)	1932
Vanqa, H.	(Agriculture)	"



University of Fort Hare
Together in Excellence

COLLEGE DIPLOMA IN BUSINESS

Mopeli, Charles	(Second Class)	1917
Modibeli, Lazarus	(First Class)	1919
Molapo, Mohaeka	" "	1920
Ntsihlele, Peacock	" "	"
Mahlasela, Francis	(Second Class)	"
Mabandla, Andrew	" "	1922
Msimang, Richard	(First Class)	1924
Mohapeloa, Joel	" "	1925
Ndamase, John Wesley	" "	1926
Mosese, Samuel	" "	1926
Mashologu, Benjamin	" "	1927

COLLEGE DIPLOMA IN AGRICULTURE

Sonjica, Stanford	(Second Class)	1920
Gule, William	" "	1923
Makunga, Dodds	" "	"
Moletsane, Edwin	(Second Class)	1923
Ngwenya, Henry	" "	"
Ntsasa, Edwin	" "	1924
Kumalo, Martin	(First Class)	1926
(Distn.—Field Husbandry and Poultry.)		
Maku, George	(Second Class)	1926
Ntlabati, Victor	" "	"
Tau, Everett	(First Class)	1930
Bulube, N.	" "	1931

PRELIMINARY COMMERCIAL CERTIFICATE OF THE
NATIONAL ADVISORY BOARD.

University of Fort Hare

Together in Excellence

Makiwane, Ndodipela	1918
Mahlasela, Francis	"
Matlosa, Reynolds	"
Molapo, Mohaeka	"
Ntsihlele, Peacock	"
Nqandela, Robert	1919
Vilakazi, Raymond	"
Mabandla, Andrew	1920
Motsoane, Samuel	1921
Boti, Milner	"
July, Julius	1922
Mpantsha, James	"
Masisi, George	1923
Ndamasi, John Wesley	1923
Masisi, Agnes Felicia	1924
Mosese, Samuel	"
Motsepe, Gilbert	1929
Ramolahlwane, Philip	"

JUNIOR CERTIFICATE IN COMMERCE.

Xapile, Wilfred	1930
Ramolahlwane, Phillip	1932

SENIOR CERTIFICATE IN COMMERCE.

Mosese, Samuel S.	1932
-------------------	----	----	----	------

SUCCESSSES OF FORMER STUDENTS.

- William Fowler, B.Sc., (Mining), Glasgow University.
- Calvin Motebang—Graduated, M.B., Ch.B. (Edinburgh).
- Maurice Peters—M.B., Ch.B., (Edin.), D.T.M. (Liverpool).
- Innes Gumede—M.B., Ch.B. (Birm.).
- Ernest Dietrich: M.B., Ch.B. (Edin.)
- Arthur Marillier M.B., Ch.B. (Glas.)
- Govindasamy Naidoo M.B., Ch.B. (Edin.)
- Rosebery Bokwe passed Third Professional Medical (Edin.)
- Zachariah Matthews, B.A., passed L.L.B. 1930.
- M. M. Moerane, passed 2nd year Mus. Bac. 1931.
- Mosedra Ismail passed Third Professional Medical (Edin.)
- Shivajee Bramdaw " " " " "
- Chadwick Dhlamini " " " " "
- Emil Blume, passed Second Professional Medical (Edin.)
- Jessie Terris—B.Sc., (S.A.)
- James Coventry, B.A., M.Sc., (Cape Town) Medallist in Psychology and Applied Mathematics.
- Olaf Gibb, B.A., (S.A.)
- Alfred Ferreira, B.A., passed M.A. (Columbia, N.Y.).
- Samuel Oppelt, B.A., passed M.A. (S.A.), 1932.
- Mildred Kay, B.A., Diploma in Educ. (Bristol).
- Lionel Mtinkulu—Qualified Attorney—1928
- Michael Thelejane—Passed Second Year B. Com,

SPORTS.

Championship Events 1933.

Winner.

Cross Country	Kwinana	15 min. 44 secs.
Throwing Cricket Ball	Mesatywa	91 yds. 1 ft.
High Jump	Crutse	5 ft. 1 in.
Long Jump	Lekhethoa	19 ft. 3 in.
Putting the Weight	Phillips	27 ft. 2½ in.
100 Yards	Phillips	10 7/10 secs.
220 "	Phillips	24 2/5 secs.
440 "	Phillips	57 4/5 secs.
880 Yards	Kwinana	2 mins. 14 4/5 secs.
1 Mile	Kwinana	5 mins. 4 3/5 secs.*
120 yards Hurdles	Raditladi	18 secs.*
Relay Race	Anglican Hostel	4 min. 17 3/10 sec.

*College Records

Hostel Cup	1930	Iona
	1931	Iona
	1932	Anglican

Holder of Cup Presented by Mrs. W. T. Murdock for the Victor Ludorum.

1922	Ferreira, Alfred J.
1923	Ferreira, Alfred J.
1924	Ferreira, Alfred J.
1925	Ferreira, Alfred J.
1926	Sosibo, William
1927	Mtimkulu, Donald
1928	Goetham, Daniel
1929	Tsoebebe, Archelaus
1930	Mtimkulu, Donald
1931	Mona, Alfred
1932	Nkabinde, Keith
1933	Phillips, Andrew

COLLEGE REGISTER, 1933.

<i>Name.</i>	<i>Address.</i>	<i>Hostel.</i>
1. Bam, Jellicoe	Qumbu, Transkei	M
2. Bam, Melville	Umtata, Transkei	M
3. Bikitsha, Charles	Butterworth, Transkei	M
4. Bikitsha, Gladstone	Butterworth, Transkei	M
5. Bokako, Edison	Fauresmith, O.F.S.	M
6. Bopela, Pascoe	Phoenix, Natal	P
7. Bulube, Sandile	Butterworth, Transkei	M
8. Cook, Alison T.	Fort Hare, Alice	—
9. Coopan, Somarsundram	Durban, Natal	A
10. Crutse, Vincent Peter	Vryburg, Cape	A
11. Dandala, Jackson J.	Umtata, Transkei	M
12. Davids, Jeffrey	Gravet, Reinet, Cape	A
13. Deenadayalu, Soaba R.	Maritzburg, Natal	A
14. Dhladhla, R. Z.	Umzimkulu, Natal	M
15. Dhlamini, Amos W.	Alcockspruit, Natal	M
16. Dyarvane, Enoch	Ludeke, Transkei	M
17. Futshane, Benedict	Ndabakazi, Transkei	P
18. Gabriel Joseph	Durban, Natal	A
19. Govender, Arumugan	Maritzburg, Natal	A
20. Godfrey, Ivan	Durban, Natal	A
21. Hermanus, Victor	Idutywa, Transkei	P
22. Honono, Nathaniel	Qumbu, Transkei	M
23. Jingiso, Patricia	St. Matthews, Cape	W
24. Jordan, Archibald C.	Tsolo, Transkei	A
25. Jukuda, Catherine	Libode, Pondoland	W
26. Kakana, Geoffrey	Ludeke, Transkei	M
27. Kambule, S. S.	Dannhauser, Natal	M
28. Kati, Noble	Queenstown, Cape	A
29. Kay, John	Port Elizabeth, Cape	A
30. Kualu, Gertrude Thoa	Qhobosheaneng, Griqual'd E.	W
31. Kuzwayo, Ephraim	Durban, Natal	P
32. Kwinana, Vayeke	Herschel, Cape	A
33. Lekhethoa, Herbert	Matatiele, Cape	A
34. Liphuko, Jabez	Thaba-Nchu, O.F.S.	M
35. Lusaseni, Lawrence	Nqamakwe, Transkei	P

Name.	Address.	Hostel.
36. Mabiletsa, Philip	Johannesburg, Transvaal	M
37. Madapuna, Maria	Matatiele, Cape	W
38. Mafanya, Dumakude	Tsomo, Transkei	P
39. Mahlangeni, Daisy M.	Mount Frere, Transkei	W
40. Makaluza, Clement	Willowvale, Transkei	M
41. Makgahlela, Asa	Molsgat, Transvaal	P
42. Makongwana, Lennox	Ngqeleni, Transkei	M
43. Maku, Percival	Umtata, Transkei	P
44. Mall, Darwood S.	Waschbank, Natal	A
45. Mancoba, Ernest	Benoni, Transvaal	A
46. Maqanda, De Wet	Butterworth, Transkei	P
47. Masupha, Marcellinus	Teyateyaneng, Basutoland	A
48. Mathu, Eliud W.	Kikuyu, Kenya Colony	P
49. Matshikwe, Cecil	Port Elizabeth, Cape	P
50. Matshikwe, John	Cape Town, Cape	P
51. Matshoba, Daniel	Tabankulu, Transkei	M
52. Mayekiso, S. D.	Matatiele, Cape	M
53. Mayeza, Albert	Ndlenzi, Pondoland East	M
54. Mbeki, Govan	Qamata, Transkei	M
55. Mbobo, Victor V.	Mount Fletcher, Griqual'd E.	P
56. Mdala, Origen	Port Elizabeth, Cape	M
57. Mdleleni, Letitia	Idutywa, Transkei	W
58. Mdongolo, Joseph	Mount Frere, Transkei	M
59. Mesatywa, Ezra	Maritzburg, Natal	M
60. Methola, Abiel	Herschel, Cape	M
61. Mgobozi, Farrant	Qumbu, Transkei	P
62. Mgudlwa, Halley	Engcobo, Transkei	P
63. Mjamba, Harry	Kentani, Transkei	P
64. Mkentane, Livingstone	Mount Frere, Transkei	M
65. Mlauli, Eugene	Mount Frere, Transkei	A
66. Moalosi, William	Benoni, Transvaal	M
67. Moerane, Manasseh	Far View, Cape	P
68. Moikangoa, Donald	Bloemfontein, O.F.S.	P
69. Mokhehle, William	Teyateyaneng, Basutoland	A
70. Molaba, Bernard	Molsgat, Transvaal	P
71. Moorosi, Matsabisa	Nancefield, Transvaal	M
72. Moretlo, Zachariah	Maseru, Basutoland	A

<i>Name.</i>	<i>Address.</i>	<i>Hostel.</i>
73. Moruri, Paul	Matatiele, Cape	P
74. Mosaka, Paul R.	Nancefield, Transvaal	M
75. Mosená, Dayid	Quthing, Basutoland	A
76. Motsamai, Richard T.	Maseru, Basutoland	P
77. Mpumlwana, Pumelele	Qumbu, Transkei	A
78. Msimang, Walter	Edendale, Natal	M
79. Mzamane, Godfrey	Qumbu, Transkei	A
80. Nazo, Horatio	Cofimvaba, Transkei	A
81. Ndamase, Douglas	Libode, Transkei	A
82. Ngcwabe, Theobert	Germiston, Transvaal	M
83. Ngudle, Belgium	Libode, Transkei	A
84. Nobadula, Barend	Knights, Transvaal	A
85. Noñtso, Elliot	Qumbu, Transkei	M
86. Ntantala, Priscilla	Idutywa, Transkei	W
87. Ntja, Michael	Mafeteng, Basutoland	A
88. Ntloko, Muriel	Tsomo, Transkei	W
89. Ntloko, William	Libode, Transkei	M
90. Ntola, Merriman	Umtata, Transkei	M
91. Ntshona, Adolphus	Umtata, Transkei	M
92. Ntshona, Jellicoe	Umtata, Transkei	M
93. Ntuli, William	Umzimkulu, Griqual'd East	P
94. Parbhoo, Ratilal	Maritzburg, Natal	A
95. Patel, Lalloo	Aliwal North, Cape	A
96. Peterson, Ronald W.	Port Elizabeth, Cape	A
97. Phillips, Andrew E.	Queenstown, Cape	P
98. Phokompe, J.	Bodenstein, Transvaal	M
99. Phooko, Sam Teboho	Matatiele, Cape	P
100. Pitso, Abel	Winburg, O.F.S.	M
101. Putsoa, Abiel	Letsunyane, Basutoland	P
102. Qaba, Gilford	Nqamakwe, Transkei	P
103. Qaba, Lawrence	Nqamakwe, Transkei	P
104. Qunta, Alexander	Engcobo, Transkei	A
105. Qunta, Anders	Engcobo, Transkei	A
106. Raditladi, Lee	Serowe, Bechuanaland	A
107. Rajuili, Solomon	Matatiele, Cape	P
108. Ramfakir, Jhuria	Durban, Natal	A
109. Rozani, Seleton	Umtata, Transkei	P

<i>Name.</i>	<i>Address.</i>	<i>Hostel.</i>
110. Seleoane, Moses	Herschel, Cape	M
111. Sigcau, Desmond	Lusikisiki, Pondoland	M
112. Sikunyana, Abel	Herschel, Cape	A
113. Sililo, Percival T.	Maritzburg, Natal	P
114. Skosana, Moses	Norgoma, Zululand	M
115. Soga, Mary	Lady Frere, Transkei	W
116. Stofile, Don	Umtata, Transkei	M
117. Sukati, Samuel T.	Bremersdorp, Swaziland	M
118. Swaartbooi, Douglas	Idutywa, Transkei	M
119. Tabata, Isaac	Bailey, Cape	A
120. Toni, Morris	Umtata, Transkei	M
121. Tsekiso, John	Ladysmith, Natal	A
122. Tshiki, Lovett	Umtata, Transkei	P
123. Tsotsi, Wycliffe	Umtata, Transkei	P
124. Van der Ross, George	Wynberg, Cape	P
125. Xapile, Wilfred	Ngqeleni, Pondoland	P
126. Yako, Harvey	Umtata, Transkei	M
127. Yako, Percival	Umtata, Transkei	M
128. Yako, Osborne	Umtata, Transkei	M
129. Yusuf, A. Y.	Durban, Natal	A
130. Zwakala, Drummond	Umtata, Transkei	M

Constitution.

1. NAME AND OBJECT OF COLLEGE.

The name of the College (which during the stages preliminary to the adoption of this Constitution has been provisionally called and known as "*The Inter-State Native College*") shall be "*The South African Native College.*"

The College is established primarily for the benefit of the Native races of South Africa.

II. CHRISTIAN CHARACTER OF COLLEGE.

The College shall be a Christian College, and, while no special religious tests may be applied, all members of the staff shall be professing Christians and of missionary sympathies.

III. CONSTITUTION OF COUNCIL.

The College shall be under the control of a Council constituted in the following manner, which shall be styled the "Governing Council of the South African Native College."

A. Representatives of Donors. A Roll of Donors shall be kept on which shall be entered the names of the persons, corporations and societies that have contributed towards the capital funds of the College whether for building or for endowment.

Any person, corporation or society contributing a sum of £5,000 to the capital funds of the College shall be entitled to appoint one member to the Council, and if the sum contributed be £10,000 or more, two members.

All donors contributing amounts of at least £5 or less than £5,000 shall together be entitled to elect one member to represent them on the Council and when their collective contributions shall be £10,000 or more, two members.

The voting powers of these donors shall be as follows:—

Those contributing from	£5	to	£15	one vote each,
"	"	"	£15	to £50 two votes each,
"	"	"	£50	to £100 three votes each,
"	"	"	£100	to £250 four votes each,

and one additional vote for every additional £250.

The methods of election shall be arranged and carried out by the Council.

B. Representatives of the University of South Africa. The University of South Africa shall be entitled to appoint two members to the Council.

C. Representatives of Co-operating Churches, Missionary Societies and other bodies. Any Church, Missionary Society or other body co-operating with the College in any one of the following ways shall be entitled to appoint one member of the Council :—

Alternative Plans of Co-operation.

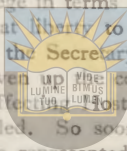
- (a) The erection of a hostel, on plans approved by the Council, of the value of not less than £2,000, together with an undertaking to pay annually to the Council (1) a sum of £150 towards the salary of its Warden, and (2) to maintain the hostel with its grounds and outhouses in a fit state of order and repair, to the satisfaction of the Council, and (3) to fulfil the further conditions specified under the Schedule annexed to this Constitution ; or, (b) An undertaking to pay annually to the Council a sum of not less than £250 towards the funds of the College ; or, (c) Any other plan of co-operation acceptable to the Council as equivalent to one of the above-mentioned plans.

If any two or more Churches, Missionary Societies or other Bodies desire to combine for the purpose of co-operating with the College in terms of any one of the above-mentioned plans, they shall be entitled to do so and to nominate one member to the Council.

While in all cases the right to nominate a member of the Council shall follow the actual fulfilment of some one of the conditions above-mentioned, any Church, Missionary Society or other Body or Union of Churches, Missionary Societies or other Bodies notifying the Secretary of the Council of their

intention to fulfil such conditions shall in the interim be entitled to send a representative to attend all meetings of the Council, to share in its discussions, but without the right to vote provided that if, after such reasonable time has elapsed as in the opinion of the Council is sufficient for the fulfilment of the condition undertaken and that condition be not fulfilled, the right to send a representative to the Council's meetings shall by vote of the Council be abrogated.

Any Church, Missionary Society or other Body or Union of Churches, Missionary Societies or other Bodies desiring to cease co-operating with the College in terms of any one of the above-mentioned plans shall be at liberty to do so, upon giving two years' notice in writing to the Secretary of the Council, and in a case of a hostel being given up the conditions specified in the Schedule of Regulations affecting hostels annexed to the Constitutions being also fulfilled. So soon as the co-operation is withdrawn, the right to be represented upon the Council shall automatically cease.



University of Fort Hare

Together in Excellence

D. Representatives of Native Secondary Education. Those institutions which the Governing Council has accepted as adequately preparing students for any of the entrance tests of the College shall collectively be entitled to elect one member of the Council. The election shall be arranged in the first instance by the Executive Board, and thereafter by the Council.

E. The Principal of the College shall be a member of the Governing Council *ex officio*.

F. Government Representatives. His Excellency the Governor-General may from time to time appoint four members to the Council, and the administration of any State, Colony or Protectorate, making an annual grant of not less than £250 in support of the College, shall during the continuance of the grant be entitled to appoint one member to the Council.

G. Representative of Graduates. Provision shall be made by vote of the Council, at such future time as the Council shall think proper, for the election of an additional member to the Council, or additional members not exceeding three in number, by those

past students who may be graduates of a University or holders of such certificates from the College as shall entitle them, in the opinion of the Council, to be enrolled as voters for the purpose.

H. Alternate Members. All bodies entitled to appoint members of the Governing Council shall have the right to appoint alternates for the same period with full power to act for the primarii whenever these are unable to attend meetings of the Council.

IV. DURATION OF APPOINTMENT TO THE COUNCIL.

Each member of the Council shall hold his seat for three years from the date of his appointment.

In the event of any of the bodies entitled to nominate a member failing to do so the action of the other members forming the Council shall in no way be invalidated by such failure.

The Council at its first meeting shall frame rules for the conduct of its business, and elect a chairman.

V. POWER AND DUTIES OF THE COUNCIL.

(a) All immovable property and fixed assets of the College shall be vested in the Council incorporated by Act of Parliament No. 30 of 1923.

(b) The Council shall from time to time frame such rules, for their own guidance, for the regulation of the affairs of the College and for the discipline and conduct of the students as the said Council shall deem expedient.

(c) The Council shall devise or adopt such entrance tests, courses of study and practical training as in their judgment are suited to the needs of the Native people of South Africa, and are calculated to promote their moral, social, intellectual and industrial advancement. The courses to be provided shall, as occasion and opportunity arise, include preparation for the B.A. or other higher examination of the University of South Africa or other similar final examination of a recognised University.

(d) The Council shall ascertain and consider the views of the Senatus as to the courses of study and practical training.

(e) To appoint the staff.

The power to terminate engagements and to dismiss any member of the staff shall rest with the Council.

(f) Power to alter Constitution.

The Council may, by vote of not less than three-fourths of the members present, amend or add to the provisions of this Constitution, save and except Article II in regard to the Christian character of the College, provided (a) that at least three months previously formal notice of the proposed resolution shall have been sent to all the members and (b) that formal objection is not made within three months of the passing of the resolution by more than one-third of the members of the Council.

(g) Not more than two member of the Senatus other than the Principal shall be eligible for membership of the Council.

University of Fort Hare
Togener Senatus.

Subject to the foregoing provisions the superintendence and regulation of the instruction and discipline in the several departments of the College shall be vested in a Senatus consisting of the Principal, Professors, such Lecturers as the Council shall determine, Wardens of Hostels, and two Members appointed by the Council. The acceptance, rejection or dismissal of students shall rest with the Senatus.

The Senatus shall provide for and arrange a College divine service, which shall not be of a sacramental or sacerdotal character, to be held each Sunday, and for daily morning prayers.

The Senatus may frame, alter or amend rules for the regulation of meetings, conduct of its business and performance of its duties subject to the ratification of the Council.

VII. UNDENOMINATIONAL HOSTEL.

The Council shall make arrangements by which the first hostel shall be undenominational.

The undenominational Hostel shall be under the sole control of the Council, and shall be subject to the conditions specified under Section (a) to (i) of the Schedule of Regulations affecting Hostels.

VIII. LAND FOR HOSTELS.

Any Church, Missionary Society or other Body or Union of Churches, or Missionary Society or other Bodies desiring to cooperate with the College by the erection of a hostel on the terms specified under Article III. and others specified in the Schedule of Regulations affecting Hostels, shall be entitled to receive from the Council land for the said purpose on terms to be determined by the Council.



IX. ACTIONS AT LAW.

All actions and other proceedings at law to be instituted by or against the South African Native College shall so be instituted or brought in the name of the Chairman of the Council of the South African Native College, and all powers of Attorney, contracts and formal documents on behalf of the College shall be signed and executed by the Chairman of the Council and also by the Principal for the time being. The Chairman and Principal shall incur no personal liability in respect of such action or other proceedings and shall in their conduct therein observe all regulations and all directions given by the Council on behalf of the College.

SCHEDULE OF REGULATIONS AFFECTING HOSTELS.

- (a) The Hostel and Land shall be used only for the purposes of the College.
- (b) The Hostel shall be open to inspection by the Council or any deputed member of it at all reasonable hours.

(c) Dormitory accommodation shall be of such extent and so arranged as to satisfy the requirements of the Council.

(d) (1) The Warden shall be appointed by the Council upon the nomination of the body erecting the hostel. He shall thereafter be a member of the College Staff.

(2) If the hostel is also to be used for theological training, the body erecting the hostel shall after consultation with the Council appoint its theological tutor who may thereby be nominated by the body erecting the hostel for appointment to the office of Warden of the hostel by the Council.

(3) Theological tutors and members of the Hostel Staff other than the Warden may be appointed by the body erecting the hostel, subject to confirmation by the Council.

(e) The Warden is expected to take his turn in conducting the College Sunday Service and daily morning prayers as may be arranged by the Senatus.

(f) The Warden shall be responsible for the personal and religious oversight of all the students in his hostel, giving to those students resident therein who belong to the Church which the hostel represents such special religious instruction as the body erecting the hostel may require.

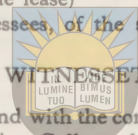
(g) The Warden shall be responsible for the oversight of preparation in the hostel.

(h) No independent tuition or other work shall be undertaken by the Warden without the written sanction of the Council.

(i) In the event of the owners of the hostel ceasing to cooperate in this way with the College, due notice having been given as specified in Article III, Section C. of the Constitution, the land shall revert to the Council and the hostel with its out-houses shall be acquired by the Council at a fair valuation.

HOSTEL LEASE.

AGREEMENT OF LEASE made and entered into by and between A B in his capacity as Chairman of the Council of the South African Native College and C D in his capacity as Principal of the said College, hereinafter called the Lessors, of the first part and G H and J K in their capacity as (here must be inserted the officers of the Church having authority to enter into the lease) hereinafter called the Lessees, of the second part.



that the said Lessors by and with the consent of the Council of the said South African Native College, hereinafter called the said Council, do hereby agree to hire certain lot or lots of ground being portion of the property of the said College situate at Fort Hare, Division of Victoria East, in extent (acres) more fully described in the diagram hereunto annexed, marked "A," upon the following terms and conditions to wit :—

- (1) That the tenancy shall be for a period of fifty (50) years reckoned from the signing of this agreement, with the option of renewal for a like period and which may be renewed at the expiration of every fifty years for a further period of fifty years on the same terms.
- (2) That the rent shall be the sum of ten shillings (10s.) per lot per annum and shall be payable by the said Lessees to the Treasurer to the said Council on the 10th day of January in each and every year.
- (3) That the said Lessees shall pay all rates and taxes which may become due and payable under any Act of Parliament or Divisional Ordinance in respect of the property hereby leased during the existence of this lease.

- (4) That the said Lessees shall erect on the said piece of ground a Hostel for the accommodation exclusively of enrolled students of the said College.
- (5) That such Hostel shall be erected on plans approved by the said Council in writing and at a cost of not less than *two thousand pounds* (£2000) sterling and the said Lessees shall not begin the erection of such hostel or any outbuildings save and except with the written approval of the said Council first had and obtained.
- (6) That the said Lessees shall and will at all times keep and maintain the said hostel and out buildings, fences and ground, in a fit and proper state of order, repair and cleanliness to the satisfaction of the said Council.
- (7) That the dormitory accommodation shall be of such extent and so arranged as to satisfy the requirements of the said Council.
- (8) That the hostel shall be open to inspection by the Council or any deputed member of it at all reasonable hours.
- (9) That the hostel and land shall be used only for the purposes of the College.
- (10) That the said Lessees shall be entitled to cancel this lease at any time upon giving two years' notice thereof in writing to the Secretary of the said Council and upon such cancellation the Lessors shall pay to the said Lessees a fair valuation for the said hostel and its outbuildings.
- (11) That during the continuance of this lease the said Lessees shall be bound to take such electric current as they may require for lighting purposes and such water as may be required for any purpose from the said Council should the said Council be in a position to supply the same and the said Council hereby undertakes to charge the said Lessees a

fair and reasonable price for such electric current and water as also to make all proper and reasonable provision in its power, for an adequate and efficient supply of electricity and water.

- (12) That should the said Council be in the position to supply the necessary sanitary service of the said hostel the said Lessees shall accept the same and shall pay a fair and reasonable price thereof.

In the event of the Council not being in a position to supply such sanitary service the said Lessees shall make provision therefor to the satisfaction of the said Council.

In the event however of the Lessees desiring to provide a separate sanitary service they may do so on obtaining the consent in writing of the Council, subject to the arrangements and execution of the service being to the satisfaction of the Council.

- (13) That the said Lessees shall be bound by all such by-laws and regulations as the said Council has already framed or may in future frame for the good and seemly government of the hostels.
- (14) That the costs of the preparation and registration of this Lease including the costs of survey and diagrams and the stamps to be affixed thereto shall be borne by the said Lessees.
- (15) In this Lease the terms Lessors and Lessees shall be held to include the successors in office of such Lessors and Lessees.

THEOLOGICAL TRAINING.

The following are the arrangements approved by the Council whereby Theological Training may be given in connection with the denominational hostels erected by Churches :—

1. If a Warden is required by his Church to occupy the whole of the teaching period of his day or any part thereof in Theological instruction, the Church concerned

shall meet his salary proportionately, beyond the £150 contributed by it. The Council shall contribute a sum of £50 towards his salary in respect of the supervision of the studies of its students.

2. If a Warden is exclusively engaged in College tutorial work the whole of his salary beyond the £150 shall be met by the College.
3. Theological students on joining the College for studies in connection with a denominational hostel must be duly enrolled as regular students and pay the College fees prescribed in connection with their course. Such students shall submit, before enrolment, a certificate from the authorities of their Church showing that they have been duly accepted for Theological Training.

Churches not maintaining a hostel and desiring Theological Training for students must themselves make the arrangements for such training with one or other of the Churches providing a Theological Course at the College.

4. A preparatory Arts course for candidates for the Ministry is provided by the College, but attendance upon it is not made compulsory by the College.
5. The question of co-operation and the interchange of tutorial services is left to the consideration of the Churches, the College undertaking to provide accommodation for conjoint or separate classes as far as practicable.

RULES FOR PROCEDURE OF COUNCIL.

1. The meetings of the Council shall ordinarily be held at the College. Members of the Council shall receive at least fourteen days notice of meetings. Seven shall constitute a quorum.

2. The Council shall elect a Chairman and a Vice-Chairman. These shall be appointed at the first meeting of each newly-appointed Council and shall hold office for three years or until such time as their successors can be appointed. In the event of an office falling vacant before the expiry of the three years' period, the Council shall make an interim appointment for the unexpired portion of the period.
3. The Chairman shall have a deliberative as well as a casting vote.
4. Statutory meetings shall be held in the first fortnight of March and the first fortnight of November. At the meeting in March, an audited statement of accounts for the preceding year, and at the meeting in November, estimates for the ensuing year, shall be submitted.
5. Special meetings may be called by the Executive or at the request in writing of six members (*primarii*).
6. At special meetings of the Council, business other than that for which the meeting was specially called, of a routine nature, shall be allowed if desired by a majority of the whole Council.
7. All proposals submitted to the Council, other than purely formal or routine, shall be framed in the form of written motions, and the Council shall resolve on such motions by vote.
8. At the first ordinary meeting of each newly-appointed Council, the Council shall appoint an Executive Committee. The Executive Committee shall appoint three of its members, any one of whom will sign cheques along with the Bursar.
9. The Council shall appoint a Secretary to keep the records of the Council.
10. The Council shall appoint a College Bursar. Cheques on the Bankers of the College shall be signed by the Bursar, and by one of the three members appointed as provided for in section 8.

11. At the first ordinary meeting of the year, the Council shall appoint an auditor or auditors for the current year.
12. The Bursar shall at each ordinary meeting present to the Council a short statement of receipts and expenditure for the period since the preceding meeting.
13. The books of the College shall be audited each year and at such other times as the Council may direct.
14. These Rules of Procedure may be amended or enlarged, three months' notice of such proposed change having been given in writing.



RULES AND REGULATIONS OF SENATUS.

1. "The superintendency and regulation of the instruction and discipline in the several departments of the College shall be vested in a Senatus consisting of the Principal, Professors and such Lecturers as the Council shall determine, and Wardens of Hostels.
2. "The acceptance, rejection and dismissal of students shall rest with the Senatus.
3. "The Senatus shall provide for, and arrange a College divine service which shall not be of a sacramental or sacerdotal character, to be held each Sunday, and for daily morning prayers.
4. "The Senatus may frame, alter or amend rules for the regulation of its meetings, conduct of its business and performance of its duties, subject to the ratification of the Council."
(Extract from the College Constitution.)
5. The Senatus shall meet on the third Thursday of every month during terms.
6. At all meetings five members shall form a quorum.

7. A full agenda and documents relating thereto shall be circulated at least two days before any stated meeting of Senatus.
8. Minutes of all proceedings of the Senatus shall be kept by the Secretary.
9. Special meetings may be held at the request, conveyed in writing to the Chairman or Secretary, of any two members, but two clear days' notice of such meeting shall be given. A special meeting may also be summoned at any time at the discretion of the Chairman.
10. At special meetings, only the business on the agenda shall be transacted.
11. The Annual Electoral Meeting shall be the August meeting of the Senatus.
12. At the Annual Electoral Meeting, or as otherwise determined, the University shall appoint a Vice-Chairman and Secretary to hold office for the following academic year.
13. At the Annual Electoral Meeting of the Senatus the Standing Sub-Committees, of which the Principal shall be a member *ex-officio*, shall be appointed.
 - (a) *A Board of Studies* : The Principal and two elected members shall form a Board of Studies and shall have the duty of advising the students with reference to their courses of study.
 - (b) *Library Committee* : The Principal and two elected members shall form a Library Committee and shall be responsible for the management of the Library.
 - (c) *Committee of Wardens* : The Wardens shall form a Committee for drawing up common regulations for hostel government.
 - (d) *Publications Committee* : Two editors of the College Calendar who shall also have oversight of the students' publications shall be appointed.

14. Members of the Staff shall ordinarily obtain leave of absence from the Council. In cases of emergency, however, the Principal shall have power to grant leave of absence not exceeding fourteen days.
15. Members of the Staff who are unable through illness to undertake their duties at the scheduled time shall as soon as possible communicate with the Principal.
16. The Senatus may at its discretion invite any member of the Staff of the College, not a member of the Senatus, to be present during the discussion of any matter.
17. No member of the Staff shall take any step affecting the policy and interests of the College without consulting the sanction of the Senatus or the Principal.
18. The Time-Table for the work of the College classes shall finally be decided upon by the Senatus.
19. The Principal shall be the intermediary between the Senatus and the students in all matters affecting the work of the College.
20. A Register shall be kept of all the students of the College in which shall be entered in the case of each Student such particulars as have been decided upon by the Senatus.
21. A record of attendance, progress and conduct signed by the Principal shall be forwarded to the parent or guardian of each student at the end of every term.
22. The names of students excused from lecture courses for which they have entered shall be submitted to the Senatus.
23. At the ordinary meeting in March, or as otherwise convenient, the Principal shall lay before the Senatus his report of the work of the previous year before submitting it to the Council.
24. The rules and regulations may be amended at a month's notice, and, if the amendment is agreed to by the Senatus, it shall be submitted to the Council at its first meeting for approval.

Report of the Governing Council

FOR THE YEAR ENDING 31st DECEMBER,
1932.

The Hon. the Minister for Education.

Sir,

We have the honour to present the report of the Council of the South African Native College for the year ending 31st December, 1932.

1. *Changes in membership of Council* : A new council having been elected for the period 1932-33-34, at the first meeting of the year a cordial welcome was given to those holding office for the first time : Mr. H. F. G. Huissonke, Chief Inspector of Native Education in the Orange Free State, Professor J. Ewing representing the University of South Africa ; Crs. J. Xakekile and J. J. Xaba representing the Transkeian Territories General Council ; Dr. A. W. Wilkie, Principal of Lovedale, representing the Church of Scotland and Howard Pim, Esq., C.B.E., representing Donors.

During the year the Council lost by death, the Rev. W. A. Goodwin, M.A., representative of the Church of the Province since 1926. It placed on record its sense of loss by passing the following minute at its meeting in November, 1932.

"The Governing Council record with a deep sense of loss the death on 31st August of one of their members, the Rev. W. A. Goodwin. Mr. Goodwin came on the Council in 1926 as representative of the Church of the Province of South Africa. His vigour of mind and his deep and practical sympathy with the aims of the College immediately made themselves felt, and his presence on the Council was a valuable addition to its strength. In the service of his own Church he had acquired much experience in matters connected with education, finance and building. This experience enabled him to enter fully and at once into the questions with which the Governing Council had to deal. The Council had in him one on whose well-informed and sound judgment they could rely.

"Mr. Goodwin impressed himself on his fellow-members as one who possessed in a marked degree a genius for friendship. He was interested in every part of the life of the College and in all whom he met. There was a keenness and freshness in his sympathy which made him a valued friend.

"To his widow and family, and to the Church of the Province of South Africa the Governing Council offer their deep and respectful sympathy."

2. No new Departments, Professorships or Lectureships were instituted during the year.

3. *Staff* : During the year leave was granted to Miss Mary Dick, M.A., to proceed to the United States of America for further study. During the second half of the year her place was filled by Miss Margaret Gane, B.A.

Mrs. Best was appointed temporarily Matron of the Dining Hall.

At the close of the year the Warden of the Anglican Hostel, the Rt. Rev. William Edmund Smyth, M.A., M.B. (Cantab.), resigned on the ground of age. Bishop Smyth had already completed lengthy spells of missionary service in Africa before he was appointed first Warden of the Anglican Hostel at Fort Hare. But he was able to give twelve years service as Warden of the Hostel and to give help upon the teaching staff as well. The Council adopted the following minute recording its gratitude to Bishop Smyth and to his sister Miss Smyth.

"The Governing Council record their appreciation of the notable service Bishop Smyth has rendered as Warden of the Anglican Hostel and as a member of the College during his twelve years at Fort Hare. The College has found in him a great spiritual personality, strong, humble, kind and courteous. In the academic work of the College, he has taken quite a considerable share lecturing especially on scientific subjects, and he has ever been ready to assist in times of emergency. He has been valued as a colleague, and revered and beloved by his students.

"The Council acknowledge their deep indebtedness to Miss Smyth and to her late sister. These gracious and cultured ladies have had a place in the life of the College altogether their own. In

particular they organised classes in art, thus adding a valuable element to the training available at the College.

"The Council wish for Bishop and Miss Smyth that they may have a happy time in their retirement and assure them of their affectionate regard and remembrance."

4. Average number of registered students :

	1931	1932
(a) Following full time courses	142	137
(b) Matriculated :		
Male	28	28
Female	2	2
(c) First year Degree Courses	21	15
Second " "	2	7
Third " "	4	4
(d) Matriculation	109	106
(e) Business	3	2
(f) Agriculture	6	2
(g) Theology	23	27
(h) Teacher Training	21	14



University of Fort Hare
Together in Excellence

5. Number of Lecturers and Students in the various Departments :

Departments	Lecturers		Students	
	Male	Female	1931	1932
	1932			
English	1	2	141	137
Mathematics	1	—	59	66
Physics & Chemistry	1	—	70	57
Botany & Zoology	—	1	60	79
History	—	1	83	75
Afrikaans	—	1	12	8
Bantu Studies & Latin	1	—	132	137
Education & Philosophy	2	—	47	59
Commerce	1 part time		33	34
Agriculture	1 part time		42	34

6. *Number of Degrees and Diplomas conferred and passes obtained :*

	1931	1932
Bachelor of Arts	4	5
Completed Third Year in Arts	5	5
" Second " " "	6	10
" First " " "	10	11
Bachelor of Science : First Year	2	1
College Diploma in Education	7	7
Matriculation	16	24
Commercial Certificate	—	4

7. *Number of Bursaries awarded :*

(a) From Government Sources	—	—
(b) From College Revenue	—	—
(c) From other Sources	59	64

8. *The Library :* There fall to be gratefully acknowledged Donations to the Library from Miss Alice Werner, London ; Mr. Howard Pim, Johannesburg ; Mr. J. B. Watson, Pretoria ; Sir Thomas Muir ; Estate of Dr. Jane Waterston ; Mr. W. P. Bond ; Mr. W. Bennie. There was given to the College by Mrs. D. Douglas and family of East London, the library of the late Rt. Rev. R. B. Douglas, D.D., consisting of over 2,000 volumes of general literature, philosophy, and theology. This is the most considerable gift to the College Library since the beginning of the College. It will be maintained as a separate unit and will be known as the Douglas Library. A portrait of Dr. Douglas kindly presented by his nephew Mr. Alan C. K. Jones has been hung in the Library.

9. The various activities of the students have been carried on as in former years.

10. *Finance :* The grant from the Union Government, which was £5704 in 1930 and £5190 in 1931 was further reduced to £5065 in 1932. In view of the financial situation in the country expenditure for the second year in succession was reduced to a minimum. Underspensing on necessary services, such as

Science equipment, library, repairs was the rule. The result is that the Revenue Account for the year shows a surplus of £462 os. 11d. but this is rather a reflection of uncertainty as to the future than matter for congratulation. It is due to a reduction of 5 p.c. on all salaries, to increased profit on farming operations in spite of falling prices, and to increased surplus on the Dining Hall account because of falling prices and reduction of overhead charges.

The decrease in enrolment, due solely to inability of students to find the money for education, sometimes as in the case of bursars inability to find the small amount necessary for maintenance, brought about a decrease over last year of £108 in tuition fees.

The surplus on the Dining Hall was £167 5s. 2d. and on the Farm £134 8s. 2d.

The deficit on the Women's Hostel was £89 14s. 7d. due to the restriction of the number of women students. There was no deficit on the Agricultural Show, due mainly to the contraction of prize money.

The surplus on the Education and General Account after these surpluses and deficits had been taken account of was, as already stated, £462 os. 11d.

The Property and Assets, excluding Denominational Hostels and the Student Christian Union, are valued at £56,149 7s. 10d.

General : The roll for the first half year was 142 and for the second 132, making an average of 137. The drop in enrolment in the second session was simply due to financial pressure. No extension of work has been possible but considerable thought has been given to possible lines of development, in Bantu Studies, in Science and in Agriculture, as soon as conditions permit.

Of the five students who graduated B.A. last year two, James J. R. Jolobe and George Molefe, deserve special recognition for the manner in which they have surmounted the barriers which lie in the way of those who do not pass through the regular Matriculation curriculum. Both these men are now ministers in the service of a Native Church. The other graduates are members of the teaching profession.

In addition to a marked increase in the number of successful candidates, a noticeable rise in the standard reached at all examinations was registered last year. Besides hard and intelligent work on the part of the students this is an index of persistent and methodical work by the staff, to all of whom we express the thanks of the Council.

We have the honour to be,

Sir,

Your obedient servants,

(Signed) G. F. DINGEMANS, *Chairman*

ALEXANDER KERR, *Principal.*



NOTE: We append to the Report of Council Memoranda on the staffing, accommodation and equipment of the Science Departments and on the development of Bantu Studies. These are matters that call for the immediate attention of all interested in the further progress of the College.

University of Fort Hare
Together in Excellence

Addendum A.

Rhodes University College,
Grahamstown.

5th January, 1933.

The Principal,
South African Native College,
Fort Hare.



Dear Mr. Kerr,

I think the time has come for your College Council to consider seriously the raising of a fund of between say £15,000 and £20,000 for the building of a Science block at Fort Hare. From my conversation with you last November I gather that several Native schools are now doing matriculation work. In order to provide teachers for these schools it is necessary to give Science courses beyond the first year University course and generally speaking if you are thinking of training candidates for the B.Sc. Degree or of giving more useful courses for the B.A. Degree it will be necessary to develop your Science courses beyond the first year. This argument applies more to Chemistry and Botany than it does to Physics but the question can be taken as a whole at present. As it will take time to raise such a fund I think the matter should be given immediate consideration.

As far as Physics goes I am prepared to put any experience of mine at your disposal and I am sure the heads of other Science departments at R.U.C. will do the same.

I am, yours truly,

(Sgd.) R. W. VARDER,

Professor of Physics,

Rhodes University College.

SOUTH AFRICAN NATIVE COLLEGE, FORT HARE.

Faculty of Science.

In September, 1932, the College Senatus recommended to the Governing Council the provision of facilities for more advanced scientific training for Non-European students. This recommendation was approved by the visiting Examiners from Rhodes University College, and was supported by a letter from Professor Varder, in which he urged the need for increased staff and improved laboratory accommodation for the work now being done. The findings of the various Committees which have discussed this proposed development are summarised below :—

I. *Reasons for recommending development of the Faculty of Science :*

- (a) Numerous requests for B.Sc. training have been received from past and present students of the College, and the experience of the College justifies the view that there are Bantu students able to undertake advanced scientific work.
- (b) Non-European High Schools are requiring graduates in Science.
- (c) Development of the Higher Diploma Course at Fort Hare requires the provision of second year courses, at least, in more school teaching subjects. Facilities for B.Sc. training in Mathematics and the Natural Sciences would help to meet this need and to satisfy the demands of the High Schools.
- (d) Trained Agriculturists of University standing will be much more effective in guiding the development of Native Agriculture and Animal Husbandry, than the class of Agriculturist, of approximately Junior Certificate standard, being trained at the Native Schools of Agriculture.
- (e) Scientific education is an essential factor in a balanced educational programme, and this both because of the

content and of the training in method which only adequate laboratory facilities can provide. Experimental science is the basis of all effective work in medicine and agriculture, and is the best antidote to the superstitions prevalent in both these fields. The training of Bantu students in Natural Science should have far-reaching effects upon the attitude of the Bantu masses to such important matters as veld ecology, afforestation, fertilizers, analyses of food stuffs, and so on, all very important factors in the economic development of the country.

II. *Condition of existing Science Departments :*

These departments are under-staffed, and laboratories and lecture rooms are both too small and otherwise unsuited to the work being done in them. See Report and letter from Prof. Varder.

III. *Estimate of cost of providing B.Sc. courses in Physics, Chemistry, Botany, Zoology and Mathematics :*

(a) *Staff :*

Two additional staff members would provide one lecturer in charge of each department, and since the development of these departments will probably coincide with the dropping of the Matriculation classes, addition of two members should be sufficient until such time as the growth of the departments themselves justify further appointments. A laboratory servant would be required by each department.

(b) *Buildings :*

The Heads of the Departments of Physics, Chemistry, Botany and Zoology at Rhodes University College were asked by the Governing Council to outline the accommodation that would be required to provide efficient training to the B.Sc. standard for the number of students indicated. The following are summaries of their estimates :—

(i) *Physics* :

Estimated numbers of students : Course I. 40.

Courses II and III, 8 each.

Note : All first year classes have been estimated at 40 since these classes will include students studying for the B.A. and for the Pre-Medical examination.

	<i>sq. ft. of floor space</i>
Elementary Laboratory, including dark room	2000
Heat, Properties of Matter, Sound	500
Electrical Laboratory	500
Optical Laboratory	400
Preparation Room	150
Workshop	200
Lecture Room, if for Physics alone	700
Accumulator Room	100
Dynamo Room	100
Store Room	100
Private Room	150
Total	4900

(ii) *Chemistry* :

Estimated numbers of students : Course I. 40.

Courses II & III, together 30.

	<i>sq. ft. of floor space</i>
First Year Laboratory	1625
Senior Laboratory	1625
Balance Room, serving (better 550)	400
Lecture Room for 40 students, with demonstration bench	800
Preparation Room, for lecture or practical work	220
Staff Office and Laboratory	380
Storage Room for Apparatus	550
Storage Room for Chemicals	300
Corridors, etc. add	500
Total	6400 sq.ft

Botany :

Estimated number of students : Course I, 40.
 Courses II and III, 16 each.
sq. ft. of floor space

First year Laboratory	2000
Plant Physiology Laboratory	1200
Another small laboratory, Agricultural tendency	1200
Balance Room	100
Small Store Room, chemicals and glassware	80
Laboratory Assistant's and Preparation Room	200
Sterilizing Room	170
Professor's Room and Laboratory	500
Lecturer's Room	300
Small Research Room	175
Dark Room	175
Greenhouse	100
Lecture Room	700
Museum	630

Total 7530 sq.ft.

Zoology :

Estimated number of students : Course I, 40.
 Courses II and III, 16 each.
sq. ft. of floor space

Elementary Laboratory	1800
Senior Laboratory	1200
Lecture Room	700
Staff Office	200
Preparation and Laboratory boy's room	200
Museum	630

Total 4730 sq.ft.

Estimate of Cost :

Total area of class rooms and corridors, probably
 25,000 sq. ft.

Estimated Cost of Building and Equipment £15,000 to
 £20,000.

Addendum B.

SOUTH AFRICAN NATIVE COLLEGE BANTU STUDIES.

1. In the University degree courses, Bantu Studies are thus placed :

- | | | |
|-------------|-----|--|
| Under Group | II. | A Bantu Language (i.e. Zulu, Xosa, Suto, Chwana). |
| „ | „ | III. Native Law. |
| „ | „ | V. Social Anthropology ; Ethnic History of Africa ; South African Archaeology. |
| „ | „ | VIII. Comparative Bantu Philology. |

2. At the present time the Bantu Studies lecturer (Mr. Jabavu) conducts eight classes of the above, namely, Comparative Bantu Philology I and II for Suto and Xosa ; Social Anthropology I and II ; Xosa I and II ; — all within four periods per week.

3. Native Law can only be considered in conjunction with a full-fledged Law Department, and as there are frequent inquiries and applications for it, this should be included in future development schemes. South African Archaeology will need a specialist.

4. The time of four periods a week at present devoted by Mr. Jabavu to this department is exceedingly meagre, due to his carrying all the first and second year Matriculation classes in Chwana, Zulu, Suto and Xosa as well as the first and second year Matriculation Latin.

5. The Committee suggests that, as a beginning, some redistribution of work should be made in 1933 so as to enable Mr. Jabavu to increase his Bantu Studies lectures from four to, say, ten periods a week ; this readjustment to be followed by a gradual change leading to a time when his teaching will be confined entirely to Bantu Studies and Vernaculars.

6. For 1933, or later, the Committee suggests the appointment of a Lecturer in Classics as a step towards relieving Mr. Jabavu of Latin.

7. As Bantu Studies and Vernaculars are an essential feature of this College, and will always be required by students taking the College Diploma Courses in Business, Theology, Agriculture and the Chiefs' Course, the Committee points out that the College, after abolishing the University Matriculation classes, will of necessity retain the sub-Matriculation classes in Vernacular and Bantu Studies for the convenience of students in the Faculties of Business, Theology, Agriculture and the Chief's Course.

Consequently when arrangements are being made to discontinue the Matriculation classes, this factor will have to be taken into account.

8. *Objective :*

(a) Fort Hare should aim at developing a strong centre for the study and teaching of Bantu Languages and of the group of subjects embraced under the general name of Bantu Studies.

(b) The College is a Native College, and it is of high importance that Native students should be trained to scientific observation and reasoned knowledge of their own languages, laws and customs.

(c) Fort Hare offers unique opportunities for research work. The number of African languages spoken by the students and the initial knowledge of Native customs which they possess insure that much valuable exploratory and comparative work can be done at any time at Fort Hare itself.

(d) The College should be a centre for a Bantu Studies Museum and Library: for the registering and preserving of results of Bantu Study, and for the initiation and directing of lines of inquiry as these present themselves.

The Lovedale Press is near at hand, and the question of publication is simplified.

(e) Schools of Bantu Study have been developed at Cape Town, Stellenbosch and Johannesburg, and have received considerable Government support. Hitherto Fort Hare has not been strong enough in this department to claim such support, and there is danger that it may fail to develop the service which its special circumstances should require it to offer.

(f) The Department of Bantu Languages and Studies should be one of the strongest in Fort Hare, staffed and equipped for research and teaching. It should aim at such a standard of work as to entitle it to speak with authority on these subjects.



University of Fort Hare
Together in Excellence


Statistics.

COMPARATIVE STATEMENT FOR THE SIXTEEN YEARS 1916—1932.

—:0:—

I. ROLL.

Total number of Students enrolled during the year.

	Average First 5 years	Average Second 5 years	Average Third 5 years	1931	1932
	38	92	100	160	142
					
II.					
Men	35	82	92	151	133
Women	3	6	8	9	9
University of Fort Hare TRIBE. <i>Together in Excellence</i>					
III.					
Fingo	17	25	24	41	39
Xosa	3	9	16	35	28
Basuto	5	10	21	34	28
Zulu	3	14	17	15	14
Coloured	4	17	10	8	5
Bechuana	2	7	3	4	5
Pondo	1	4	7	13	15
Swazi	1	1	1	1	1
Indian	1	4	3	3	6
Others	—	1	1	—	1

IV. LANGUAGE.

Xosa	22	40	42	76	67
Sesuto	5	10	22	30	24
English	3	5	3	1	2
Zulu	3	15	19	17	14
Sechuana	2	7	3	4	5

	Average First 5 years	Average Second 5 years	Average Third 5 years	1931	1932
Afrikaans ..	3	15	8	7	5
Sepedi ..	—	1	3	6	3
Hindustani ..	—	—	2	3	6
Pondo ..	—	—	4	15	15
Tonga ..	—	—	—	—	1
Kikuyu ..	—	—	—	—	1

V.

RESIDENCE.

Cape Province	8	28	26	37	18
Transkei ..	14	26	35	68	75
Basutoland ..	4	7	8	14	11
Natal ..	5	14	16	18	18
Orange Free State	1	5	3	5	6
Transvaal ..	3	9	9	13	7
Rhodesia ..	—	1	1	2	2
Bechuanaland	—	1	1	2	3
Swaziland ..	—	—	—	1	1
Kenya ..	—	—	—	—	1



University of Fort Hare

Together in Excellence

VI.

DENOMINATION.

Wesleyan ..	14	38	39	75	57
Presbyterian ..	11	21	34	42	43
Anglican ..	4	12	19	27	30
Others ..	6	19	6	16	12

VII.

ENTRANCE QUALIFICATION.

Matriculation	—	—	1	2	3
Junior Cert. ..	11	33	76	120	114
Teachers' Cert.	20	51	23	38	25
Entr. Exam. ..	2	8	—	—	—

VIII.

COURSE.

Post Matric. ..	—	12	20	34	34
Univer. Matric.	26	48	47	75	67
Sen. Leaving Cert.	—	—	5	5	10
Col. Matric. ..	4	19	19	37	27
Business ..	6	7	3	3	2
Agriculture ..	2	5	5	6	2

IX. EXAMINATION RESULTS.

		Total for First 5 years	Total for Second 5 years	Total for Third 5 years	1931	1932
B.A. Degree						
First Year	..	—	16	32	17	11
Second Year	..	—	12	22	8	10
Third Year	..	—	3	15	4	5
College Diploma in Arts						
First Year	..	—	2	—	—	—
Second Year	..	—	2	—	—	—
Third Year	..	—	1	1	—	—
College Diploma in Education	..	—	—	9	7	7
B.Sc. 1st Year					1	—
Pre-Medical	..	—	1	8	1	1
Univer. Matric.	..	13	31	57	15	20
College Matric.	..	1	7	9	3	3
Sen. Leav. Cert.				6	1	4
Business Diploma						
First Class	..	—	3	3	—	—
Second Class	..	3	1	—	—	—
Prelim. Com. Cer.	..	8	8	3	—	—
National Technical Day-School Cert.						
Part I.	..	—	4	—	—	—
„ II.	..	3	4	1	—	—
National Commerce						
Sen. Cert. in Com.		—	—	—	—	1
Jun. „ „ „	..	—	—	1	—	1
Agri. Diploma	..	1	5	6	3	1

University of Fort Hare
Together in Excellence

X. TUITION AND HOSTEL STATISTICS.

I. Average Number of Boarders for Ten Years.

1922	1923	1924	1925	1926	1927
88	96	83	90	88	80
1928	1929	1930	1931	1932	
76	108	130	142	138	

II. Comparative Statement of Dining Room Cost per Student for Ten Years.

<u>1922</u>	<u>1923</u>	<u>1924</u>	<u>1925</u>	<u>1926</u>	<u>1927</u>
£13 15 5	£13 2 5	£14 3 7	£12 10 4	£16 6 0	£18 7 6
<u>1928</u>	<u>1929</u>	<u>1930</u>	<u>1931</u>	<u>1932</u>	
£20 13 0	£16 6 3	£15 10 2	£15 10 6	£14 12 6	

III. Average Cost per student for Education

Average Amount contributed by State	£52 1 0
" " " " College	£30 16 0
" " " " Student	£13 14 6
(including Theological Students)	£ 7 10 6
Percentage of contribution by State	59.2 %
" " " " College	26.4 %
" " " " Student	14.4 %

IV. Fees paid by Students for Ten Years.

<u>1922</u>	<u>1923</u>	<u>1924</u>	<u>1925</u>	<u>1926</u>
£1930 9 3	£2268 19 0	£2062 11 2	£2175 6 9	£2232 4 2
<u>1927</u>	<u>1928</u>	<u>1929</u>	<u>1930</u>	<u>1931</u>
£1755 19 9	£1951 7 6	£2733 3 8	£3319 14 6	£3634 15 0
		<u>1932</u>		
		£3454 5 6		

DONATIONS OF £5 AND OVER TO THE CAPITAL ACCOUNT.

	£	s.	d.
Transkeian General Council	10,000	0	0
United Free Church of Scotland ..	5,000	0	0
De Beers, Kimberley	2,500	0	0
Rhodes Trustees	1,000	0	0
Lady Philipson Stow	500	0	0
Glen Grey District Council	500	0	0
Howard Pim, Esq.	700	0	0
Pondoland General Council	250	0	0
S. A. Races Committee (per A. F. Fox, Esq.)	207	0	0
Joseph Rowantree, Esq.	125	0	0
Francis Oats, Esq.	26	0	0
General Botha	26	5	0
H. Beard, Esq.	25	0	0
Chief Mahupa	26	0	0
Rev. J. Knox Bokwe	12	0	0
H. Hirsch, Esq.	10	10	0
Chief Mangala Ndamase	10	0	0
Mr. Moses Masisi	10	0	0
Mr. J. Makasi	6	6	0
Rev. J. D. Goronyane	5	5	0
Rt. Hon. W. P. Schreiner	5	5	0
Mr. M. Pelem	5	5	0
Rev. E. Sidlai	5	0	0
Senator T. Schreiner	5	0	0
Dr. Claud Taylor	5	0	0
Dr. J. W. Weir	5	0	0
Rev. D. Malgas	5	0	0
Mr. E. Tshongwana	5	0	0
Messrs. Hosken & Co.	5	0	0
Other European Donors	28	6	6
Other Native Donors	186	14	11
	£ 21,200	19	11

Basutoland Administration, a grant of £300 p.a., equal to the interest on a Capital donation of £6,000.

Special grant from the United Free Church of Scotland for survey, fencing, etc., £320.

The following Churches have erected or will erect Hostels :—

1. Methodist Church of South Africa (of value over £14,000.)
2. United Free Church of Scotland (of value £10,000).
3. The Church of the Province.

The following Donations have been made for scholarships :—

	£	s.	d.
The Society of Friends, (per A. J. Hoyland, Birmingham) ..	130	0	0
The Society of Friends (per Miss Impey)	61	0	0
The Society of Friends (per Miss Clarke)	20	0	0
Well Park Sunday School, Greenock (per Mr. McCall)	43	0	0
Mount Park S. School, (per Mr. Marshall) ..	42	0	0
Miss Macvicar, Lovedale	15	0	0
Mr. J. Chalmers, Lovedale	5	0	0
Rt. Hon. W. P. Schreiner	5	5	0
Student Christian Movement	200	0	0
Miss Girdwood	50	0	0
The Society of Friends, (for a Medical student) £40 per annum	200	0	0
Total	£771	5	0

South African Native College.

CALENDAR—APPENDIX 1.

REGULATIONS

UNDER HIGHER EDUCATION ACT,



No. 30 of 1923.

University of Fort Hare

Together in Excellence

***N.B.—All Amendments made up to May, 1929,
have been embodied.***

**REGULATIONS FRAMED UNDER SECTION NINE-
TEEN OF THE HIGHER EDUCATION ACT
No. 30 of 1923.**

Institutions declared to be Places of Higher Education.

I.—Declaration of Minister and Scheme of Government.

1. The provisions of the Act relating to declared institutions shall apply only to institutions specially declared under the Act to be places of higher education.

2. The scheme of government, approval of which is necessary prior to the declaration, shall be deemed to include all provisions of the Act and of these regulations, provided that the Minister may, under the powers conferred in section *nineteen* of the Act, approve of regulations not inconsistent with the Act applicable to a single institution and included in its scheme of government, and such special regulations shall be of effect notwithstanding anything contained in these general regulations.

3. The draft scheme shall be published in the *Gazette* by direction of the Minister not less than thirty days before approval is given, and shall be laid upon the table of both Houses of Parliament within fourteen days of approval or, if Parliament be not sitting, within thirty days of the beginning of the next succeeding session of Parliament.

4. The scheme shall be of effect from the date prescribed in the Minister's declaration of approval, or, if no such date be prescribed, from the date of publication in the *Gazette* of that declaration.

II.—Councils.

5. (i) The scheme shall prescribe the constitution of the Council, in which shall be vested the government and executive control of the institution, and shall indicate the authority responsible for the exercise of the functions of the Council during any period not exceeding three months prior to the first meeting of the Council. The authority aforesaid shall, not more than two

months after his approval of the scheme, inform the Minister of the names of persons appointed to be members of the Council other than those to be appointed by the Minister.

(ii) The Minister shall cause to be published in the *Gazette* the names of persons appointed by him to be members of the Council

(iii) The Council may, subject to the authority of the minister, elect honorary members of Council, who shall not be entitled to vote in meetings of the Council and shall hold office for three years or such other period as may be determined by the Council.

6. Each appointed member of the Council (unless otherwise provided) shall hold office for a period of three years beginning on the first day of January in the year of appointment.

7. Three months before the expiration of the period of office of any member of the Council notice shall be given by the secretary of the Council to the person or body entitled to appoint his successor. If the Secretary do not receive due advice of the appointment of a successor before the date when the office becomes vacant, the Council shall at its next meeting report the vacancy to the Minister and may make a recommendation. The Minister shall then appoint a person to fill the vacancy.

8. An appointed member of Council may resign his office by letter addressed to the secretary; he shall be deemed to have resigned his office if he be absent from three consecutive meetings of Council without leave obtained, or become insolvent, or be convicted of a criminal offence, or become incapacitated from fulfilling the duties of his office by mental or bodily infirmity or disease.

9. Within fourteen days of the receipt of advice of a casual vacancy the secretary shall notify the vacancy to the person or body responsible for the appointment, who shall appoint a successor to hold office during the remainder of the period for which the retiring member was appointed. If a successor is not appointed within three months of his notification the Council shall at its next succeeding meeting report the vacancy to the Minister and may make a recommendation. The Minister shall then appoint a person to fill the vacancy.

10. The secretary shall report to the Minister all changes in the membership of the Council.

11. The Council shall submit for the approval of the Minister—

- (i) standing orders prescribing the procedure in Council meetings, the method of appointment and powers of committees, and the financial arrangements of the institution ;
 - (ii) conditions of service of the teaching and administrative staffs ;
 - (iii) the constitution of the Board of Studies and the powers and functions delegated thereto ;
 - (iv) the creation of any department or of any teaching or administrative post ;
 - (v) the names of persons proposed to be appointed as honorary or assessor members of Council under section 56(ii) of the Act ;
 - (vi) conditions for any certificates or diplomas to be awarded by the institution ;
 - (vii) any scheme for joint control with another body or a portion of the work of the institution ;
 - (viii) the name of the auditor or auditors who will sign the annual financial statements ;
 - (ix) the name of any person to be appointed as principal of the Institution or to a full-time teaching post on the staff of the Institution ;
- and shall forward for his information records of its proceedings.

III.—Boards of Studies.

12. The Board of Studies shall consist of the principal, who shall be chairman, such members of the teaching staff as shall be decided by the Council, and two persons who are not members of the full-time teaching staff and are appointed by the Council from among the members of the Council.

The powers and functions of the Board shall be decided by the Council with the approval of the Minister.

13. The Board of Studies shall elect annually two of its members to the Council who shall hold office for a period of one year.

IV.—Conditions of Service.

14. For the purpose of Regulations 15 to 21 inclusive, "officer" shall mean a member of the permanent full-time teaching staff.

15. Every officer shall receive notice of his appointment signed by the chairman of the Council, which notice shall indicate the rate of remuneration.

16. The appointment of any officer may be terminated by notice in writing on either side of three months ending on 30th June or 31st December, unless the Minister has approved of any other period or date agreed upon by the Council and the officer ;

(i) provided that notice of termination of contract as herein provided shall not be given by the Council to any officer unless the consent of the Minister has first been obtained.

(ii) Whenever a Council applies to the Minister for his consent to give notice to an officer of the termination of his contract the officer concerned shall be notified of the fact and such officer may within 14 days after the date of such notification by the Council to him submit to the Minister any written representations which he may desire to make on his own behalf.

17. The Council shall have the right to dismiss without notice at any time an officer who is guilty of serious misconduct or gross neglect of duty or is convicted of a criminal offence. The Principal shall have power to suspend from duty any officer if he consider such suspension necessary in the interest of the institution, but his action must be confirmed within fourteen days by the Council or the chairman acting for the Council.

18. An officer discharged by the Council for any reason other than the termination of his contract shall have the right to appeal to the Minister, whose decision shall be final. Notice of intention to appeal shall be given to the Minister and to the Council within fourteen days of the receipt of notice from the Council.

19. In the case of officers appointed on transfer from any public education service in South Africa, and assuming duty not later than the first working day in the quarter, salary shall be paid from the beginning of the calendar quarter in which service begins. If such appointment is made from overseas, such

allowance shall be paid for transport prior to the assumption of duty as the Council may determine.

20. Every officer shall perform such duties during college vacations as may be required by the Council, provided that not less than six weeks in each calendar year shall be left to his personal disposal.

21. (i) Subject to the exigencies of the college work and suitable provision for the duties of his office, an officer may be granted special leave of absence for a period not exceeding one month for each year of completed service on such terms as the Council may appoint, but full salary shall not be paid for a period of more than three consecutive months during such leave without the approval of the Minister.

(ii) In applying this regulation the Council may give recognition to periods of teaching service in other institutions.

(iii) In cases of incapacity through ill-health, sick leave may be granted on such conditions as the Council may prescribe in each case.

University of Pretoria V.—Existing Rights.

22. Nothing in these regulations contained shall be deemed to deprive any officer duly appointed before the date prescribed under regulation 4 and holding office at that date of any rights previously obtained by agreement between him and the authority governing the institution at that date.

VI.—Inspection.

23. The Minister may from time to time cause an inspection to be made on the premises, administration, and instruction of an institution, and may require defects in these respects to be remedied as a condition of the grant-in-aid, of which the whole or part may be withheld until he is satisfied that proper steps have been taken to meet his requirements.

VII.—Grants-in-Aid.

24. After 1st April, 1924, the General Purpose grant to an institution shall for each financial year be based on the fee income and other revenue of the preceding calendar year.

Provided that in the first year in which a grant is made under these regulations the amount shall be determined by the Minister after consultation with the Treasury.

On fee income the grant shall be at the rate of £3 to £1 on the first £10,000, £2 to £1 on the following £5,000 and thereafter £1 to £1.

On other revenue the grant shall be at the rate of £2 to £1 on the first £2,000, and thereafter £1 to £1; provided that on fee income derived from bursaries granted out of the general revenue of an institution the grant shall not be more than £1 to £1.

25. The Minister may, with the consent of the Treasury and from funds provided by Parliament, make—

- (a) special grants for equipment or maintenance of departments in which expenditure is of necessity relatively high, or for other special purposes;
 - (b) an annual additional grant diminishing by such amounts as he shall prescribe in the case of a new or rapidly developing institution, provided that in an institution receiving such additional grant no new posts qualifying for membership of the provident scheme shall be created and the grade of no existing post shall be raised without the consent of the Minister.
26. Notwithstanding anything contained in these regulations
- (a) the grant for any financial year in the period ending 31st March, 1928, shall not be less for any institution than the amount voted by Parliament for the year ending 31st March, 1924;
 - (b) if the grant in any financial year shall be shown by the audited accounts to exceed three-fourths of the expenditure on salaries, maintenance, and debt charges during the calendar year ending 31st December in that financial year, the Minister may deduct such excess from the grant payable in the following financial year;
 - (c) if the effect of the application of regulation 24 is to cause the grant in any financial year to exceed that of the preceding financial year by more than one-twentieth of the latter, the special consent of the Minister shall be necessary for such excess of increase;
 - (d) in the event of the creation of a teaching or administrative post without the approval of the Minister as required under regulation No. 11, the Minister may abate the

General Purposes Grant to the extent of the salary of the incumbent of such professorship or lectureship.

In this regulation the word "grant" shall mean the sum of the General Purposes grant and the additional grant.

VIII.—Report and Accounts.

27. The Council shall present the Minister a report on the work of the institution for each calendar year not later than 31st March in the following year accompanied by an audited financial statement for the same purpose.

The financial statement shall include a balance-sheet as at 31st December and an income and expenditure account for the year.

The Minister may prescribe a form for this account, and may require an auditor's certificate of the observance of any regulation.

28. The Council shall insure and keep insured against loss by fire in an approved insurance company or companies all buildings and any other property liable to loss by fire, and, in the case of property specially mortgaged under any loan granted under the Act, shall duly cede such policy or policies to the Government as collateral security for the loan.

29. All transactions for the acquisition of property and for the erection of buildings, and for the carrying out of work which are to be the subject of a Government loan under the Act, must be to the satisfaction of the Minister.

30. No building or erection or other work done shall become the subject of a loan under this Act without a certificate being first obtained from the Public Works Department approving of the technical details of the construction and the materials thereof.

No instalments shall be paid without a certificate from the architect employed by the Council.

31. The Minister may issue such instructions as he may deem necessary or desirable as to the procedure to be followed in regard to the application for and other arrangements in connection with any loan not inconsistent with the provisions of the Act.

32. The Council shall maintain and keep in good repair to the satisfaction of the Minister or his representative all buildings and other security given in respect of any loan under this Act.

33. No Government loan shall be issued in respect of any hostel not vested in the Council of the institution.

X.—Provident Fund.

(i) *Membership.*

34. Membership of this fund shall be compulsory for all full-time members of the permanent teaching staff whose posts have been approved by the Minister and the holders of such administrative posts as are approved for the purpose by the Minister taking up an appointment on or after 1st April, 1923, and for such full-time eligible officers in service on that date as shall before 1st October, 1923, have declared to the Secretary for Education in writing their intention to become members.

Provided that an officer to whom section *twelve* of Act No. 43 of 1925 is applicable will retain his existing conditions of contribution and pension unless he elects membership of this fund.

35. On the recommendation of a Council the Minister may admit to membership other officers of the institution, but Government contributions shall be made only on salary earned in respect of service which if full-time service would render membership compulsory.

36. An officer who at the time of appointment is a member of a Government pension scheme shall be credited in the Provident Fund with such an amount representing his interest in that scheme as may be provided under any law, or, if not so provided, as may be determined by the Treasury.

(ii) *Contributions.*

37. The member's normal annual contribution shall be 6 per cent. of his salary as on the first day of April in each year.

The Government shall contribute an amount equal to three-fourths and the Council shall contribute an amount equal to one-fourth of the member's normal contribution.

A Council or member may, with the approval of the Minister, make excess contributions.

38. (1) The annual contributions of the member and Council shall be deducted in three equal parts from the instalments of grants paid by the Government to the Council next succeeding the first days of April, August, and December in each year.

(2) An officer making the declaration referred to in regulation 35 may elect that his first half-yearly normal contribution payable on 1st October, 1923, shall be 6 per cent. of his salary at 1st April, 1923.

(iii) *Application of Contributions.*

39. All contributions by and in respect of members (except as hereafter provided) shall be paid by the Government to the Public Debt Commissioners, and shall be by them invested on behalf of the Provident Fund. All interest earned on the amounts invested by the Commissioners shall be added to the fund, a dividend being added yearly as at 31st March to each member's credit, calculated at a rate which shall not be less than 4 per cent. and shall not (except with the consent of the Treasury) exceed 5 per cent. on the amount standing to his credit on that date.

Provided that on sums received in terms of Regulations Nos. 36, 37 (third paragraph), or 43 (3), and paid to the Public Debt Commissioners on behalf of the Provident Fund, the dividend shall be calculated as from the date of such payment.

40. On the termination of membership there shall be paid to the retiring member or his legal representatives the accumulated sum standing to his credit, provided that if the period of membership has not exceeded two years and where such termination of membership is due to the resignation, discharge, or dismissal of the officer within the said two years, the sum so payable shall be the member's own contribution only without dividend, and the balance of his accumulated amount shall be credited to the income of the fund.

For the purpose of this regulation the period of membership shall be deemed to include the previous period of membership in any other pension or provident scheme or schemes established under any law, provided that membership in the schemes has been continuous.

Payments under this regulation may, unless the Minister direct otherwise, be deferred until the deduction specified in Regulation No. 38 (1) next succeeding the acceptance of the claim, and shall include interest at the rate of 4 per cent. per annum for the period intervening between the previous crediting of dividend under Regulation No. 39 and the date of payment.

(iv) *Assurance Policies.*

41. Notwithstanding anything in the preceding regulations contained, a member may elect that the whole or part of the contributions made by or in respect of him shall be applied to the payment of the annual premium on (a) a policy of assurance against death before the age of sixty, or (b) an endowment assurance policy maturing at the age of sixty. Every such assurance shall be effected by the Government with a company approved by the Minister, and the annual premium shall be payable and shall be paid by the Government on the first day of April, August, or December.

42. An officer may, on first becoming a member, submit for recognition an assurance policy already existing and, if this be accepted, shall be deemed to satisfy the condition of the preceding regulation.

43. (1) During the continuance of membership any policy of assurance effected and recognized under the preceding regulations shall remain in the possession of the Government, and shall be transferred to the retiring member or his representatives only on repayment of any amount advanced in excess of the amount that would have been payable under Regulation No. 40.

(2) Any bonus or other benefit accrued on any such policy of assurance shall not be payable to the member during the continuance of membership.

(3) Whenever such a policy of assurance matures before the termination of membership of an officer, the proceeds of the said policy shall be paid to the credit of the member in the Provident Fund.

(v) *Termination of Membership.*

44. A member of the scheme shall cease to be such when he shall cease to be an officer.

45. Government contributions shall not as a rule be continued beyond the calendar year in which the member attains the age of sixty. The Minister may, however, approve such continuance from year to year on the recommendation of the contributing Council.

46. A Council proposing to grant a pension or gratuity to a retiring or retired officer, or to the estate of a deceased officer

additional to the benefits (if any) obtained under this scheme may apply to the Government for a grant on the pound for pound principle. Such a grant may be made by the Minister subject to the condition that the whole pension provided by Government shall not exceed eight pounds for each year of approved service. For the purpose of this regulation it shall be assumed that the value of an immediate annuity of one pound in the case of men at the age of sixty is ten pounds and at any other age is six shillings more or less than that value for each year by which the age is less or more than sixty years ; further, it shall be assumed that the value of an annuity payable to a woman is fifteen shillings for each pound of annuity greater than the value of an annuity payable to a man and beginning at the same age.

(vi) *Women Members.*

47. In the case of women Regulations Nos. 41 and 45 shall apply with the substitution in each case of fifty-five for sixty.

(vii) *Acting Appointments.*

48. Contributions shall not, except with the special approval of the Minister, be made during an acting or temporary appointment, but if such appointment is converted into a full appointment the officer may elect to make contributions for the period during which such appointment was an acting or temporary one, and in this event Government and Council contributions shall be paid as prescribed under Regulation No. 37.

(viii) *Administration.*

49. All expenditure in connection with the administration of the scheme shall be borne by the Government.

XI.—Interpretation of Terms.

50. In these regulations, unless inconsistent with the context—

“ the Act ” shall mean the Higher Education Act, 1923 ;

“ secretary ” shall mean the person appointed by the Council to perform the duties assigned to the secretary in these regulations ;

“ officer ” shall mean a duly appointed member of the teaching or administrative staff of a declared institution ;

- “ salary ” shall in Regulation No. 37 mean the salary approved by the Minister for the purpose of the Provident Fund ;
- “ fee income ” shall mean the whole revenue contributed to the institution by students in the form of fees for tuition, for use of laboratories, for registration, or as compulsory subscriptions to college institutions ;
- “ other revenue ” shall mean revenue (other than Government grants and fee income) which is available for ordinary recurrent expenditure and is not applied to the provision of bursaries ; provided that the Minister shall not recognise as “ other revenue ” for the purpose of grant any sums received by the institution which in his opinion should be applied to the capital endowment ;
- “ general revenue ” shall mean the sum of “ fee income ” and other revenue.

XII.—Courses of Instruction.

51. Where application is made to the Minister for recognition under section *twenty* of the Act of any course of instruction as included in higher education full particulars shall be furnished of—

- (a) the subjects and grade of instruction and number and duration of class meetings ;
- (b) the minimum qualifications, as regards standard of education and age, for admission to the course ;
- (c) the scale of students' fees ;
- (d) the estimated enrolment ;
- (e) the conditions of employments of teachers and/or instructors conducting the course ;
- (f) the estimated revenue and expenditure involved ;
- (g) the constitution of the committee under whose control the proposed course will fall.

52. No recognition will be accorded to any course which is not placed under the control of a committee consisting of at least three persons, of whom one-third may be nominated by the Minister.

53. No recognition will be accorded to any course which is conducted either wholly or partly for private profit.

54. The Minister may out of funds provided by Parliament for the purpose make such grant-in-aid in respect of any recognized course as he may deem fit.

55. Where a grant-in-aid is given to any committee in control of a recognized course such committee shall submit to the Minister annually between the 1st and 15th October, a detailed statement of its estimated revenue and expenditure for the ensuing calendar year, in such form as may from time to time be prescribed by the Department.

56. The Minister may in making a grant-in-aid in respect of any recognized course attach such further conditions to the payment of the grant as he may consider necessary in each case.

57. Where any committee in receipt of a grant-in-aid for a recognized course fails to abide by any condition attaching to the payment of the grant or fails to comply with any instruction given by the Minister in regard to any matter connected with the course the Minister may withhold payment of the whole or any portion of the grant-in-aid which may be due.

58. The powers vested in the Minister by these regulations may be delegated by him to any officer of the Department.

XIII.—Bursaries.

59. The Minister may make available out of funds provided by Parliament annually bursaries tenable at declared institutions.

60. The award of such bursaries shall be made by the Department and may be granted—

- (a) to students following a course with a view to obtaining a teacher's or instructor's diploma or certificate or
- (b) to students following such other course at the declared institution as the Department may approve.

61. A bursary granted under Regulation 60 (a) shall not exceed £60 per annum and a bursary granted under Regulation 60 (b) shall not exceed £48 per annum. No student shall be granted a bursary under both Regulations 60 (a) and 60 (b).

62. No bursary shall be awarded to a student—

- (a) whose parents or who himself is not in such need of pecuniary assistance that without such assistance he would not be able to prosecute his studies ;
- (b) who does not produce satisfactory proof of habits of application and generally of merit and good conduct.

63. Bursaries shall ordinarily be tenable for a calendar year and subject to satisfactory reports of progress and good conduct may be renewed from year to year. A bursary may be withdrawn at any time if the diligence, behaviour or progress of the holder is unsatisfactory.

64. Holders of bursaries granted in terms of Regulation 60 (a) shall sign an agreement to the satisfaction of the Department undertaking to refund all moneys expended on them under the said regulation—

- (a) if owing to any other cause than illness they fail to complete their course of University of Fort Hare
- (b) if having completed their course they fail to serve continuously as teachers in a school under the Department for a period at least equal to the period of training for which the bursary was paid.

The Department may grant exemption from the undertaking referred to in this regulation in any case where in its opinion the circumstances justify such exemption.

ACT.

To make provision for the better financial control of higher education and to validate the reduction of subsidies payable to certain institutions in respect of the financial years ended the thirty-first day of March, 1931, and the thirty-first day of March, 1932, respectively.

BE IT ENACTED by the King's Most Excellent Majesty, the Senate and the House of Assembly of the Union of South Africa, as follows :—

ESTIMATES OF REVENUE AND EXPENDITURE OF INSTITUTIONS.

1. (1) The council or other governing authority of any institution shall submit to the Minister between the first and fifteenth day of October in each year a detailed statement of the estimated revenue and expenditure of the institution for the ensuing calendar year in such form as may from time to time be prescribed by regulation.

(2) The Minister may at any time call upon the council or other governing authority of any institution to furnish him with such information in regard to the finances of the institution as he considers necessary.

WHAT ESTIMATES ARE SUBJECT TO APPROVAL OF MINISTER.

2. (1) Subject to the provisions of sub-section (2) all statements submitted to the Minister in terms of sub-section (1) of section one shall be subject to his approval.

(2) Whenever it appears that in respect of the two consecutive years immediately preceding the year in respect of which a statement is submitted to the Minister in terms of sub-section (1) of section one, the grant-in-aid voted by Parliament in respect of the institution in question did not, in respect of the first of those two years exceed the amount of the income of such institution from sources other than the Consolidated Revenue Fund, and in

respect of the last of those two years did not exceed the estimated amount of the income of such institution for such year from sources other than the Consolidated Revenue Fund as set forth in the statement in respect of such year submitted to the Minister in terms of sub-section (1) of section one and whenever the first-mentioned statement so submitted shows that such grant-in-aid is not expected to exceed the amount of its income for the ensuing year from sources other than the Consolidated Revenue Fund the Minister shall, at the request of the council or governing authority of such institution, exempt such institution from the necessity of securing his approval for such statement.

RESULT OF FAILURE OF INSTITUTION TO COMPLY WITH LAW.

3. If the Minister does not approve of any statement of estimated revenue and expenditure submitted to him by the council or other governing authority of any institution in terms of section one and subject to his approval in terms of section two or if any such council or other governing authority has failed to comply with any of the provisions of this Act or the regulations made thereunder or any other Act or regulations under which grants-in-aid from the Consolidated Revenue Fund are paid to institutions the Minister may give notice to such council or governing authority calling upon it to amend the said statement or to comply with the said provisions within a specified period and if such council or other governing authority after such notice fails to amend the said statement to the satisfaction of the Minister or to comply with the said provisions the Minister may, notwithstanding anything in any other law contained, withhold payment of the whole or any portion of the grant-in-aid voted by Parliament in respect of the institution: Provided that the Minister's approval shall not be withheld nor shall he require amendment of any such statement on account of anything done or to be done in respect of the administration of any private benefaction which is specifically made whether direct or through trustees for any of the purposes of such institution when such administration is being carried on under the provision and within the terms of direction or authority laid down or conferred in writing by the person making such benefaction: Provided further that in each

and every case, where the whole or any portion of the grant-in-aid voted by Parliament has been withheld by the Minister, he shall report the matter to Parliament with his reason for so withholding payment within fourteen days of his having notified the institution concerned of his intention so to withhold payment, if Parliament be then in session, or, if Parliament be not in session, within fourteen days of the commencement of the next ensuing session thereof.

APPROVAL OF MINISTER TO BE OBTAINED IN CERTAIN CASES.

4. Notwithstanding anything in any law contained the council or other governing authority of any institution shall not without having first obtained the written approval of the Minister

- (a) if such institution is a university or college establish or create any faculty, department, professorship or lectureship not specifically authorized by any law or statute of such institution before the commencement of this Act or not fully endowed by benefaction;
- (b) incur any expenditure not provided for in estimates of expenditure approved by the Minister in terms of section two: Provided that the Minister may by regulation provide for the use without his approval of savings under any item in such estimates to defray any excess expenditure under any other item in such estimates and for the manner and circumstances in which this may be done: Provided further that approval of such expenditure shall not be required where the money for such expenditure is specially to be obtained from private benefactions or special contributions made for the purpose for which such expenditure is desired by the institution.

REGULATIONS.

5. The Minister may make regulations not inconsistent with this Act in respect of the following matters:—

- (a) The form in which the estimates of revenue and expenditure and the information referred to in section one shall be framed;

- (b) the basis to be adopted in determining what percentage the grant-in-aid paid to an institution in any year is of the total income of the institution for the same year ;
- (c) to give effect to the proviso to paragraph (b) of section four ;
- (d) the basis to be adopted in determining whether any faculty, department, professorship or lectureship has been fully endowed by benefaction for the purpose of paragraph (a) of section four.

SUBSIDIES TO INSTITUTIONS FOR YEARS 1930-'31 AND 1931-'32.

6. Notwithstanding anything in any law contained the amounts payable to institutions from public funds in respect of the financial years 1930-'31 and 1931-'32 shall be the amounts appropriated for the purpose by Parliament in respect of those years.

AMENDMENT OF SECTION 12 OF ACT 20 OF 1917.

7. Paragraphs (b) (c) and (d) of sub-section (1) of section twelve of the Higher Education Additional Provision Act, 1917 are hereby deleted.

AMENDMENT OF SECTION 19 OF ACT 30 OF 1923.

8. Paragraph (d) of sub-section (1) of section nineteen of the Higher Education Act, 1923, is hereby deleted.

DETERMINATION OF AMOUNT OF SUBSIDY BY MINISTER.

9. (1) After consideration, in the case of each institution, of the statement submitted to him in terms of sub-section (1) of section one in respect of such institution, and with due regard to the requirement of such institutions in relation to the general requirements of higher education in the Union, the Minister shall determine the amount which he considers it necessary to place on the Estimates of Expenditure for the ensuing year as a grant-in-aid to such institution, and in or about the month of December of each year he shall advise the council or other

governing authority of such institution of the amount which he has so determined.

(2) When in any case the amount determined by the Minister under the provisions of sub-section (1) in respect of any institution differs from the amount of the last grant-in-aid voted by Parliament to such institution, he shall specifically and in reasonable detail state the reasons for such difference, and he shall further lay such statement on the Tables of both Houses of Parliament within fourteen days after he advised such institution of the amount determined by him, if Parliament be then in session, or, if Parliament be not then in session, within fourteen days of the commencement of the next ensuing session thereof.

SUBSIDY TO BE VOTED BY PARLIAMENT.

10. In each financial year after that commencing on the first day of April, 1932, there shall be paid to each institution subject to the provisions of section three, a grant-in-aid of such amount as may be voted by Parliament in respect of such institution.

INTERPRETATION OF TERMS.

11. In this Act unless inconsistent with the context—

“Minister” means the Minister of Education or any other Minister to whom the Governor-General may assign the administration of matters relating to higher education in the Union;

“institution” means a university or college as defined in section one of the Higher Education Additional Provision Act, 1917 (Act No. 20 of 1917), or a declared institution as defined in sub-section (1) of section one of the Higher Education Act, 1923 (Act No. 30 of 1923), and shall include the University of South Africa.

SHORT TITLE.

12. This Act may be cited as the Higher Education Financial Provision Act, 1931.

REGULATIONS.

Framed under section five of the Higher Education Financial Provision Act No. 27 of 1931.

1. Every institution shall frame its estimates of revenue and expenditure required to be submitted in terms of section one of the Act as indicated in the form set out in Schedule "A" of these regulations.

2. Every institution shall submit with the estimates of revenue and expenditure referred to in regulation one a copy of the audited balance-sheet and financial statements for the immediately preceding year; together with a statement showing the staff of the institution and the salaries paid in the form set out in Schedule "B" of these regulations.

3. Between the 1st and 7th September in each year every institution shall submit to the Minister a statement of revised revenue and expenditure for the current year in the form set out in Schedule "C" of these regulations.

4. In determining what percentage the grant-in-aid paid to an institution in any year is of the total income of that institution for the same year the following principles shall be observed:—

(a) As income shall be included only such amounts as have actually been received or are expected to be received during the year in respect of which the determination is made for the purpose of meeting the ordinary current expenditure of the institution for that year.

(b) Any amount in excess of £500 whether received in one instalment or in instalments spread over a period of years shall be regarded as capital endowment and shall not be included in determining the ordinary income for the year unless it is clear from the terms of the gift that the grant is intended for meeting ordinary current expenditure.

5. Before determining what percentage the grant-in-aid paid or to be paid to an institution in any year is of the total income of that institution the Minister shall submit the percentage he proposes to determine to such institution for its consideration and shall afford it an opportunity within a specified time to make

such representations to him in regard to such percentage as it may desire and the Minister shall thereupon after the expiration of such specified time and after due consideration of such representations, if any, advise the institution what percentage the grant-in-aid according to his determination forms of the total income of the institution for that year.

6. The percentage figure as advised to each institution in terms of the preceding paragraph shall be accepted as correct but shall be subject to revision when the audited accounts of the institution for that year are available and the institution after consideration by the Minister of such representations as it may have submitted shall be advised by him of any amendment of such figure that may be decided on by him and such amended figure shall thereupon be deemed to be the correct figure in respect of that particular year.

7. Where an institution has a saving on any item of expenditure such saving may without the approval of the Minister be used to meet excess expenditure on any other item classified under the same head but no saving on an item under one head shall be regarded as available to meet an excess on an item under another head until the approval of the Minister so to utilize such saving has been obtained.

8. No faculty, department, professorship or lectureship shall be regarded as fully endowed by benefaction unless the following conditions are satisfied :—

- (a) The endowment must be of a permanent nature.
- (b) The funds available from the endowment must be sufficient to meet.
 - (i) all salary payments in respect of such faculty, department, professorship or lectureship ;
 - (ii) All other expenditure directly incurred or to be incurred by the institution as a result of the establishment of such faculty, department, professorship or lectureship.

Printed by the Lovedale Press.



University of Fort Hare
Together in Excellence

Balance Sheet as at 31st December, 1932.

CAPITAL AND LIABILITIES.						PROPERTY AND ASSETS.													
			£ s. d.			£ s. d.			£ s. d.			£ s. d.							
<i>Union of South Africa: Loans—</i>						<i>Buildings and Ground—</i>													
Loan 1920/1960	10,000	0	0			As per last Balance Sheet	43,671	14	4										
Less repayment of Principal	1375	3	11	8624	16	1	Expended during the year	260	17	6									
	<hr/>																		
Loan 1922/1962	800	0	0				Less Reserve for Depreciation	£43,932	11	10									
Less repayment of Principal	92	19	3	707	0	9	of Buildings	658	9	6	43,274	2	4						
	<hr/>																		
Loan 1923/1963	3200	0	0				<i>Water Scheme—</i>												
Less repayment of Principal	267	11	4	2932	8	8	As per last Balance Sheet	2717	13	9									
	<hr/>																		
Loan 1926/1966	12,000	0	0				Less Written off for the year	34	12	11	2683	0	10						
Less repayment of Principal	731	9	7	11,268	10	5	<i>Furniture and Stock—</i>												
	<hr/>																		
Loan 1927/1967	1290	0	0				College	3742	0	11									
Less repayment of Principal	71	13	2	1218	6	10	College Dining Hall	288	0	0									
Loan Native Affairs Department				4000	0	0	College (Women's) Hostel	15	0	0	4045	0	11						
	<hr/>																		
						28,751	2	9	<i>Farm Stock</i>										
<i>Sundry Creditors—</i>						<i>Livestock, Produce, Implements, etc.</i>													
Amounts Owing and Sundry Balances ..				460	16	7													
Union of South Africa: Interest and Principal on Loans				988	10	8													
„ : Education Department:																			
General Purposes Grant paid in advance				1211	5	0	2660	12	3										
	<hr/>																		
<i>Educational Loans Fund—</i>							328	5	0										
<i>Greenslade Medical Scholarship Fund—</i>							1000	0	0										
<i>Tengo Jabavu Scholarship Fund—</i>							125	13	9										
<i>William Girdwood Memorial Scholarship—</i>							105	0	0										
	<hr/>																		
<i>Capital Account—</i>						<i>Educational Loans—</i>													
As per last Balance Sheet				22,716	13	2													
Surplus for the last year transferred from							<i>As per last Balance Sheet</i>												
Revenue Account				462	0	11	23,178	14	1	<i>Less Repaid and Amount written off during the year</i>									
	<hr/>																		
										121	7	0	1519	2	1				
	<hr/>																		
										<i>Sundry Debtors—</i>									
										Students' Fees	321	5	2						
										Sundry Balances, etc. ..	220	6	3	541	11	5			
	<hr/>																		
										<i>Greenslade Medical Scholarship Investment—</i>									
										Union of South Africa 5% Local Registered Stock 1940/1950				1000	0	0			
										<i>Tengo Jabavu Scholarship Investment—</i>									
										British Kaffrarian Savings Bank				125	13	9			
										<i>Cash and Bank Balances—</i>									
										Standard Bank of South Africa Limited	105	10	0						
										Cash in Hand	28	4	9	133	14	9			
										<hr/>									
														£56,149	7	10			
														<hr/>					
														£56,149	7	10			


Audited and found correct,

JOHN W. M. WILLIAMSON, C.A.

17th February, 1933.

Form of Bequest to the College.

I bequeath the sum of _____
Pounds Sterling free of Legacy Duty to the
South African Native College, to be paid for
the purpose of the said College to the Bursar
for the time being thereof, whose Receipt shall
be a good discharge for the same.



The logo of the University of Fort Hare is a circular emblem. It features a yellow sun with rays at the top. Below the sun is an open book with the Latin motto 'IN LUMINE TUO' on the left page and 'DEUS LUMEN' on the right page. The entire emblem is set against a blue background.

University of Fort Hare
Together in Excellence