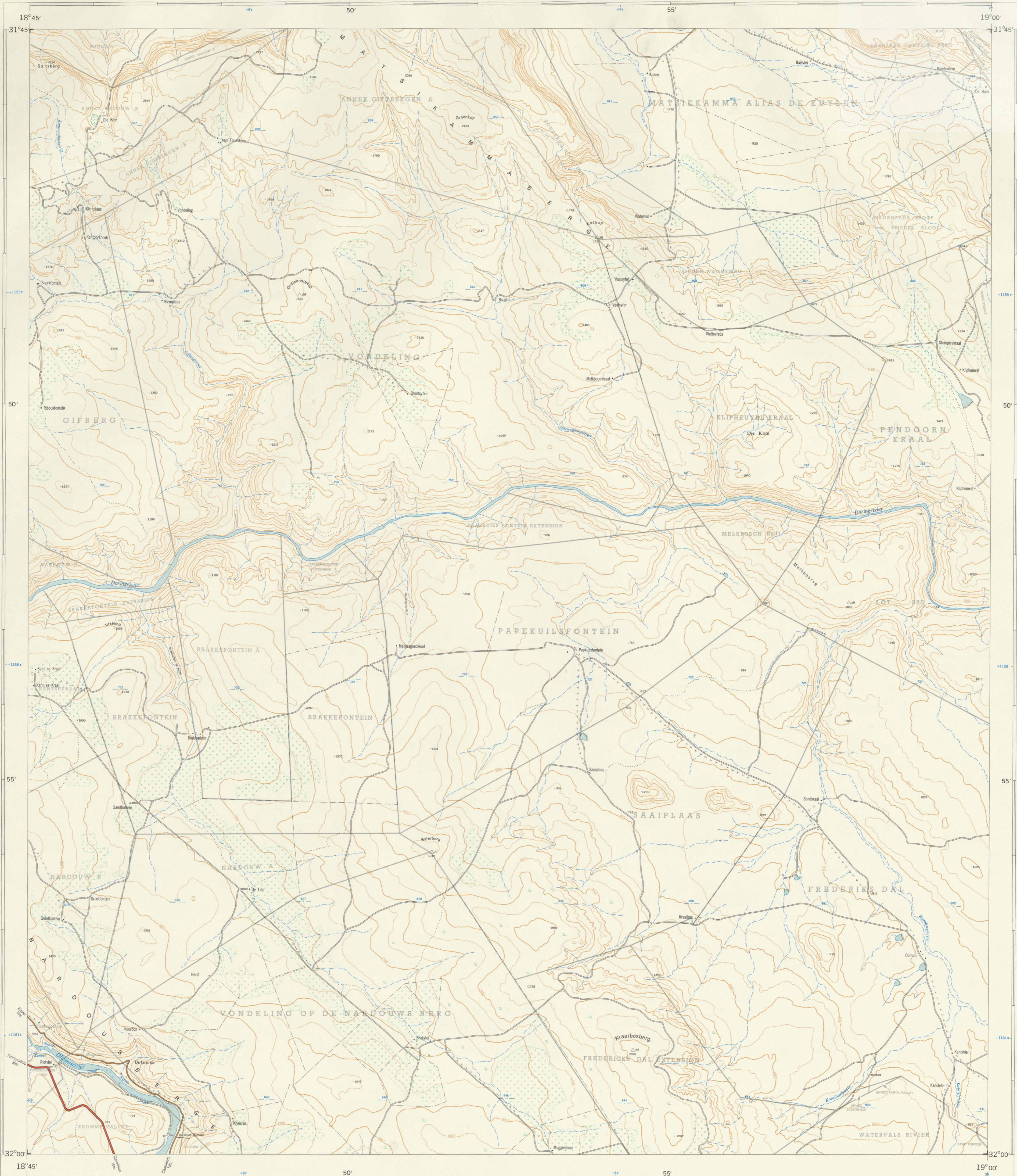




1:50,000 SUID-AFRIKA SOUTH AFRICA

3118DD BULSHOEK

Verwys na hierdie Kaart as SUID-AFRIKA 1:50,000 No. 3118DD BULSHOEK Hare
Refer to this Map as SOUTH AFRICA 1:50,000 No. 3118DD BULSHOEK Hare
Together in Excellence



Lugfoto's 1951. Opgeneem in 1955 en geteken in 1957 deur die Driehoeksmetingskantoor.
Air Photography 1951. Surveyed in 1955 and drawn in 1957 by the Triangometrical Survey Office.

Kontourruimte 100 Engelse Voet

1:50,000

Contour Interval 100 English Feet

Gedruk en Uitgees in die Republiek van Suid-Afrika deur die Staatsdrukker, Pretoria. 1957
Printed and Published in the Republic of South Africa by the Government Printer, Pretoria. 1957

T.S.O. 200/2791

VERKLARING	REFERENCE
Internasionale Grense	International Boundaries
Provinsiale Grense	Provincial Boundaries
Veelvoelige Spoorlyne	Multiple Track Railways
Enkelspoorlyne	Single Track Railways
Gelêktrifiseerde Spoorlyne	Electrified Railways
Smalspoorlyne	Narrow Gauge Railways
Dienspoorlyne	Service Railways
Nasionale Paale	National Roads
Hoofpaale	Main Roads
Sekondêre Paale	Secondary Roads
Ander Paale	Other Roads
Doewe Paale en Voetpaale	Tracks and Footpaths
Kraglyne	Power Lines
Telefoon- en Telegraaflyne	Telephone and Telegraph Lines
Post- en Telegraafkantore, Polisie stasies en -poste, Winkels, Hotelle, Skole en Plekke van Aanbidding	Post and Telegraph Offices, Police Stations and Posts, Stores, Hotels, Schools and Places of Worship
Vuurtoerrens en Seewaartligte	Lighthouses and Marine Lights
Driehoeksbakens (Nummer regs en hoogte onder)	Trig. Beacons (Number to right and height below)

Die ruitlyne van die Suid-Afrikaanse Koordinatstelsel word in die kante van die kaart aangegee deur kort swart lyne, 30,000 Engelse Voet van mekaar, met koordegetalle in eenheids van 10,000 Engelse Voet in blou.

Alle hoogtes word in Engelse Voet tot op grondhoogte aangegee. All heights are given in English Feet to ground level.

Gous se Kofompe Projekie, Modelmeridiaan 17° Oos. Gauss Conform Projection, Central Meridian 17° East.

The grid lines of the South African Co-ordinate System are indicated in the margin by short black lines at 30,000 English Feet intervals, with co-ordinate values in units of 10,000 English Feet in blue.

INDEKS VAN VELLE	INDEX TO SHEETS	
3118DA	3118DB	3118DC
3118DD	3118DE	3118DF
3218DA	3218DB	3218DC

Kaartreëlrigting verskaf deur die Landmeter-Generaal, Kaap. Orientation given by the Survey-General, Cape.

Geografiese inligting verskaf deur die Landmeter-Generaal, Kaap. Geographical information supplied by the Survey-General, Cape.

PRYS PER VEL 60c PRICE PER SHEET
KOPIEREG COPYRIGHT

VERKLARING REFERENCE

Magnetiese Stasies en Grondtekens	Magnetic Stations and Ground Signs
Wette	Wells
Monumente	Monuments
Dipbakke	Dipping Tanks
Windpompe	Windmills
Mure	Walls
Grondbewaringswalle	Anti-erosion Walls
Uitgrawings	Excavations
Staanhouende Water	Perennial Water
Nie-staanhouende Water	Non-perennial Water
Droë Panne	Dry Pans
Fonteinne, Watergate en Putte	Fountains, Springs, Waterholes and Wells
Moerasse en Vleie	Marshes, Swamps and Vlees
Pyplyne	Pipelines
Fotometriepunte	Photo Centres
Uitsaande Klipballe	Prominent Rock Outcrops
Terrasse	Terraces
Bewerkte Lande	Cultivated Lands
Boorde en Wingerde	Orchards and Vineyards
Bome en Bos	Trees and Bush

3118DD BULSHOEK EERSTE UITGAWE FIRST EDITION