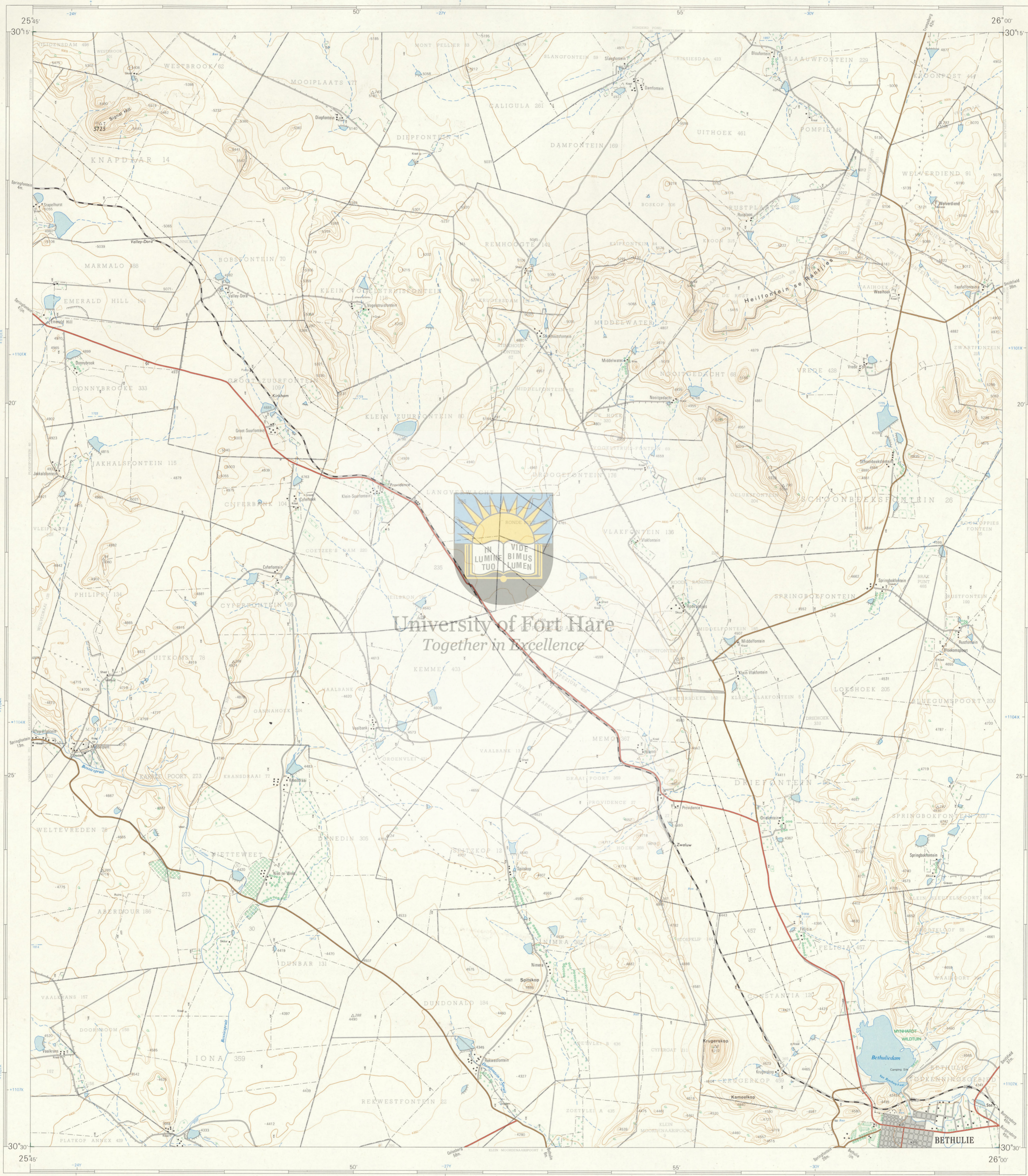




1:50 000 SUID-AFRIKA SOUTH AFRICA

3025BD BETHULIE

Verwys na hierdie Kaart as SUID-AFRIKA 1:50 000 Vel Refer to this Map as SOUTH AFRICA 1:50 000 Sheet 3025BD BETHULIE EERSTE UITGAWE FIRST EDITION



University of Fort Hare Together in Excellence

Vertical text on the left margin: 'Main magnetic declination 207.1 West of True North (1971) (0 No annual magnetic change) (1966-1970)'

OMSETTINGSTAFEL CONVERSION TABLE

VOET FEET	METER METRES
11 000	3 300
10 000	3 000
9 000	2 700
8 000	2 400
7 000	2 100
6 000	1 800
5 000	1 500
4 000	1 200
3 000	900
2 000	600
1 000	300
0	0

Lugtopografie 1963. (Tafel No. 276/63). Opgeniet in 1969 en geteken in 1971 deur die Driehoeksmetingkantoor. Air Photography 1963. (Job No. 476/63). Surveyed in 1969 and drawn in 1971 by the Triangometrical Survey Office. TSO 200/4904. Kontourruimte 50 Engelse Voet. 1:50 000. CONTOUR INTERVAL 50 ENGLISH FEET. Uitgegee in die Republiek van Suid-Afrika deur die Staatsruiter, Pretoria, 1971. Published in the Republic of South Africa by the Government Printer, Pretoria, 1971.

VERKLARING REFERENCE

VERKLARING	REFERENCE
Internasionale Grense	International Boundaries
Provisoriese Grense	Provisional Boundaries
Veevoldige Spoorlyne	Multiple Track Railways
Enkelspoorlyne	Single Track Railways
Gelikeleernde Spoorlyne	Electrified Railways
Smalspoorlyne	Narrow Gauge Railways
Dienisspoorlyne	Service Railways
Nasionale Paas	National Roads
Hooppaas	Main Roads
Sekondêre Paas	Secondary Roads
Ander Paas	Other Roads
Donner Paas en Voetpaas	Tracts and Footpaths
Kraglyne	Power Lines
Telefoonlyne	Telephone Lines
Poskantore, Polisieostasies en -poste, Winkels, Hotelle, Skole en Plekke van Aanbidding	Post Offices, Police Stations and Posts, Stores, Hotels, Schools and Places of Worship
Vuursigings en Seewaartings	Lighthouses and Marine Lights
Seewaartings	Marine Beacons
Trig. Bakens (Nommer regs en hoogte onder)	Trig. Beacons (Number to right and height below)

Die ruitjies van die Suid-Afrikaanse Koordinatstelsel word in die kaartuumre aangegee deur kort swart strepe 30 000 Engelse Voet van mekaar met koordeintervalle van 10 000 Engelse Voet in blou. Die ruitjies van die aangrensende ruitjies word op dieselfde manier aan die buitekant van die graadnet aangegee.

Hoogtes is in Engelse Voet op grondhoogte. Elevations are in English Feet to ground level.

Gauss se Konforme Projeksie, Middellandse 25° Oos, Clarke 1880 Stelsel. Gauss Conform Projection, Central Meridian 25° East, Clarke 1880 Spheroid.

Kadastrale inligting verskaf deur die Landmeter-generaal, O.V.S. Cadastral information supplied by the Surveyor-General, O.F.S.

INDEKS VAN VELLE INDEX TO SHEETS

3025BA	3025BB	3025BC	3025BD	3025BE

VERKLARING REFERENCE

VERKLARING	REFERENCE
Magnetiese Stasies en Grondtekens	Magnetic Stations and Ground Signs
Hulle	Monuments
Dipbakke	Dipping Tanks
Windpompe	Windmills
Grondbou-waarskuwingswalle	Anti-erosion Walls
Uitgrawings	Excavations
Standhoudende Water	Perennial Water
Nie-standhoudende Water	Non-perennial Water
Droë Panne	Dry Pans
Fonteinne, Watergate en Putte	Springs, Waterholes and Wells
Moerasse en Vleie	Marshes, Swamps and Vlees
Pyplyne	Pipelines
Fotomiddelede	Photo Centres
Prominente Klipbanke	Prominent Rock Outcrops
Terrasse	Terraces
Bewaaierde Lande	Cultivated Lands
Boorde en Wingerde	Orchards and Vineyards
Bome en Bos	Trees and Bush