

---

**UNIVERSITY OF FORT HARE  
ALICE CAMPUS**

ESP 122

**SECOND SEMESTER  
SUPPLEMENTARY EXAMINATIONS 2018**

Time: 3 HOURS

Marks: 100

**ENGLISH FOR SPECIFIC PURPOSES**

There are EIGHT pages including the cover page.

**INTERNAL EXAMINERS:**

**Dr Nhlandla Landa  
Ms Robyn Dixon  
Dr Sindiso Zhou**

**INSTRUCTIONS**

1. Answer all questions.
2. Encircle your lecturer's name on this cover.
3. Write your lecturer's name on the cover sheet of your answer book.
4. Place your question paper (with your annotated text) inside your answer book, and hand both in at the end of the exam.

**Question One****Comprehension****40 Marks**

Read the article below, entitled: 'Crime Prevention' and answer the questions which follow.

**Crime Prevention**

A recent survey of crime statistics shows that we are more likely to be burgled now than 20 years ago, and the police advise everyone to take a few simple precautions to protect their homes.

The first fact is that burglars and other intruders prefer easy opportunities, like a house which is very obviously empty. This is much less of a challenge than an occupied house, and one which is well-protected. A burglar will wonder whether it is worth the bother.

There are some general tips on how to avoid your home becoming another crime statistic. Avoid leaving signs that your house is empty. When you have to go out, leave at least one light on as well as a radio or television, and do not leave any curtains wide open. The sight of your latest music centre or computer is enough to tempt any burglar.

Never leave a spare key in a convenient hiding place. The first place a burglar will look is under the doormat or in a flower pot and even somewhere more 'imaginative' could soon be uncovered by the intruder. It is much safer to leave a key with a neighbour you can trust. But if your house is in a quiet, desolate area be aware that this will be a burglar's dream, so deter any potential criminal from approaching the house by fitting security lights to the outside of your house.

But what could happen if, in spite of the aforementioned precautions, a burglar or intruder has decided to target your home? Windows are usually the first point of entry for many intruders. Downstairs windows provide easy access while upstairs windows can be reached with a ladder or by climbing up the drainpipe. Before going to bed, you should double-check that all windows and shutters are locked. No matter how small your windows may be, it is surprising what a narrow gap a determined burglar can manage to get through. For extra security, fit window locks to the inside of the window.

What about entry via doors? Your back door and patio doors, which are easily forced open, should have top quality security locks fitted. Even though this is expensive, it will be money well spent. Install a burglar alarm if you can afford it as another line of defence against intruders.

A sobering fact is that not all intruders have to break and enter into a property. Why go to the trouble of breaking in if you can just knock and be invited in? Beware of bogus officials or workmen and, particularly if you are elderly, fit a chain and an eye hole so that you can scrutinise callers at your leisure. When you do have callers never let anybody into your home unless you are absolutely sure they are genuine. Ask to see an identity card, for example.

If you are in the frightening position of waking in the middle of the night and think you can hear an intruder, then on no account should you approach the intruder. Far better to telephone the police and wait for help.

1. Annotate the text, demonstrating your understanding of it (5)
2. Identify five linking words/transitions used in the text. (5)
3. Select the answers from the options given. Only write the number and the letter you have chosen in your answer book. (16)
4. A well protected house
  - a) is less likely to be burgled
  - b) is regarded as a challenge to most burglars
  - c) is a lot of bother to maintain
  - d) is very likely to be burgled
5. According to the author, we should:
  - a) avoid leaving our house empty
  - b) only go out when we have to
  - c) always keep the curtains closed
  - d) give the impression that our house is occupied when we go out
6. The writer thinks that hiding the key under the doormat or flower pot
  - a) is a predictable place to hide it
  - b) is a useful place to hide it
  - c) is imaginative
  - d) is where you always find a spare key
7. The 'aforementioned precautions' refer to steps that:
  - a) will tell a burglar if your house is empty
  - b) are the most important precautions to make your home safe
  - c) will stop a potential burglar
  - d) will stop an intruder if he has decided to try and enter your home
8. Gaining entrance through a small window
  - a) is surprisingly difficult
  - b) is not as difficult as people think
  - c) is less likely than gaining entry through a door
  - d) is tried only by very determined burglars

9. According to the writer, window locks, security locks and burglar alarms
- cost a lot of money but are worth it
  - are good value for money
  - are luxury items
  - are absolutely essential items
10. The writer argues that fitting a chain and eye hole
- will prevent your home being burgled
  - avoids you having to invite people into your home
  - is only necessary for elderly people
  - give you time to check if the visitor is genuine
11. The best title for the text is:
- increasing household crime
  - protecting your home from intruders
  - what to do if a burglar breaks into your home/
  - burglary statistics
12. Look for synonyms (words with the same or similar meanings) in the passage for the following words. The relevant paragraphs are indicated. (14)
- Indicates (para 1)
  - Suggestions (para 3)
  - Unwelcome visitor (para 4)
  - Rely on (para 4)
  - Quiet/unpopulated (para 4)
  - Entry (para 5)
  - Pricey (para 6)

**Question Two**

**Writing an Introduction**

**15 Marks**

In no more than 80 words write a good introduction to the following topic:

**'Males are a distraction and should not be allowed into female residences'**

Your introduction must have the following parts:

- A topic sentence
- Lead into the thesis of the essay (one to two sentences)
- The thesis statement

MARKS WILL BE DEDUCTED FOR NOT ADHERING TO WORD COUNT RESTRICTIONS.

**Question Three**

**Correction of Errors**

**15 Marks**

Rewrite the following sentence, correcting the tautology. (5)

3.1 Despite the fact that I answered with an affirmative 'yes', she persisted with her nagging.

3.2 It was a sudden and unexpected surprise.

3.3 It looks as if it will be a busy weekend on the beachfront on Saturday and Sunday.

3.4 I can be able to meet you tomorrow, but 6 a.m. in the morning is a bit early.

Correct the following, selecting the correct options: (10)

3.5 I need to (lend/borrow) R10.00 from you. Can you (lend/borrow) it to me?

3.6 The (effect/affect) of the hurricane was devastating.

The hurricane (effected/affected) the town badly

3.7 I do not (except/accept) your excuse for being so late.

3.8(They're/there/their/they) so happy to be (there/their). They brought (they're/their their/they) whole family.

3.9 I miss you (a lot/alot).

3.10 Of (coarse/course) I'll miss you next year.

#### Question Four

#### Business Communication

15 Marks

You wish to apply for a lectureship in the faculty of your choice at the University of Fort Hare. Write the covering letter you would send, to which you would attach your CV.

DO NOT WRITE YOUR CV.

In your covering letter, include the following:

- Why you are applying to work with that institution
- Highlight key elements in your background contained in the CV, which are important factors in your suitability as a candidate
- Politely convince the addressee that you are the best person for the position

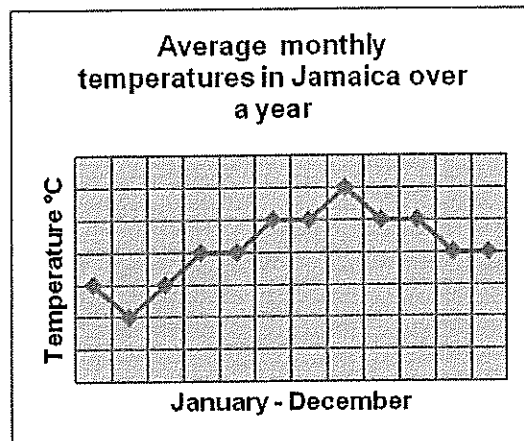
Your covering letter must be sent to: The Human Resources Manager at the following email address: [recruit2@ufh.ac.za](mailto:recruit2@ufh.ac.za). The subject line should clearly specify the post for which you are applying.

**Question Five**

**Interpretation of Text**

**15 Marks**

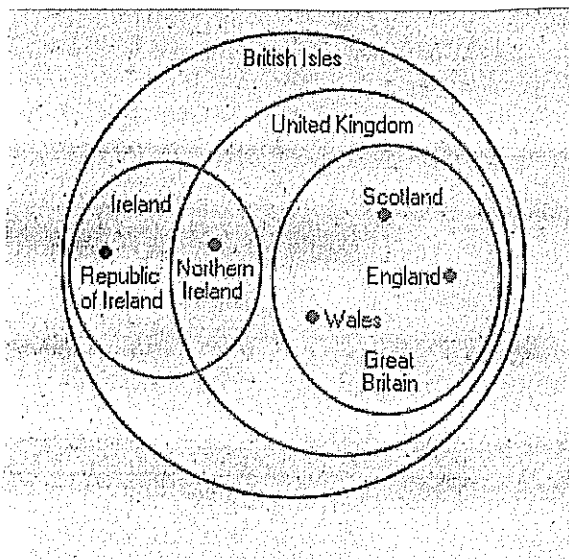
Look at the graph of monthly average temperatures recorded in Jamaica over a year and answer the questions that follow. (3)



- 5.1 Which month had the highest average temperature?
- 5.2 Which month had the lowest average temperature?
- 5.3 Which months have the same average temperature as April and May?

Look at the diagram below and answer the questions that follow.

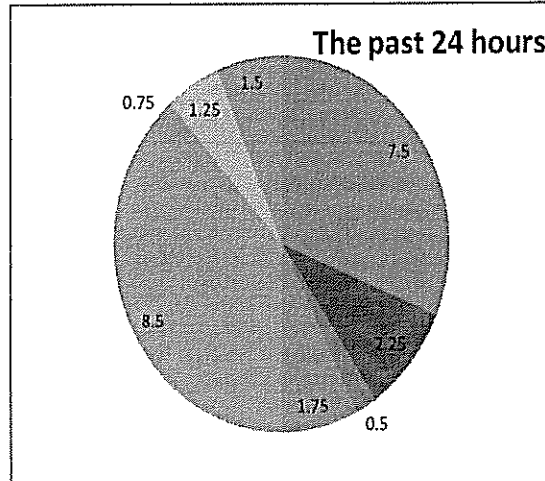
(4)



- 5.4 Which country is in the United Kingdom but not in Great Britain?
- 5.5 How many countries are included in the United Kingdom?
- 5.6 From the diagram, identify the 2 nations that make up the British Isles.
- 5.7 Is the following statement True or False?  
Northern Ireland is part of Ireland as well as the United Kingdom.

The following pie chart and table represents how I spent the last 24 hours. With reference to both, answer the questions which follow. (4)

The past 24 hours	
Sleeping	7.5
All meals	2.25
getting dressed	0.5
Travel	1.75
Work	8.5
Swimming	0.75
Household chores	1.25
Watching TV	1.5
Total	24



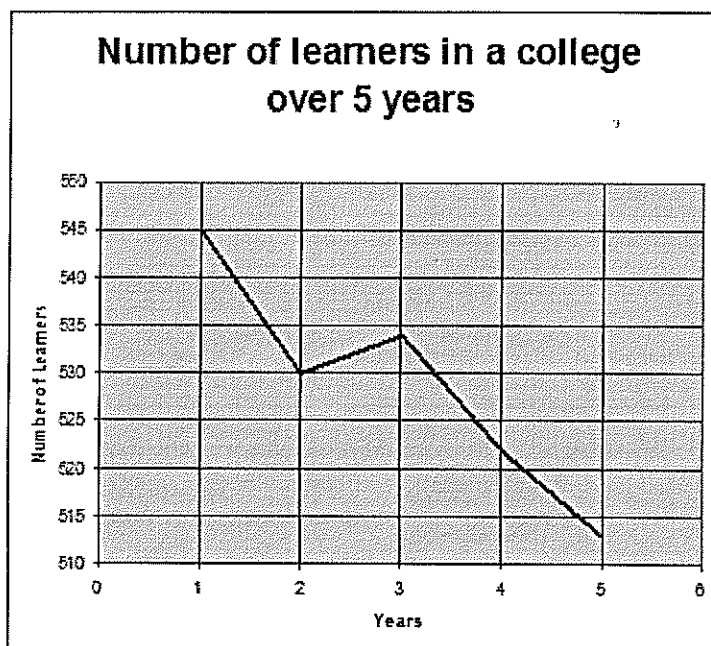
5.8 What did I spend the most time on?

5.9 Indicate whether the following sentences are True or False.

- a) I spent more time on meals than on travel, and getting dressed combined.
- b) I spent less time watching TV than on doing my household chores.

5.10 What did I spend the least amount of time doing?

Refer to the graph below and answer the questions that follow. (4)



5.11 Identify the sentence which most accurately describes what is shown in the graph.

- a) The number of learners we've had in our college has dropped significantly over the last five years.
- b) There has been a small decrease in the number of students in our college over the last five years.
- c) There has been no significant change in the number of learners in the last five years.

5.12 From the graph, give the decrease in the number of learners between years 2 and 3.

5.13 Between which years was there a slight increase in numbers of learners?

5.14 State whether the following statement is True or False:

The number of students has dropped by over 100 over the last 5 years.