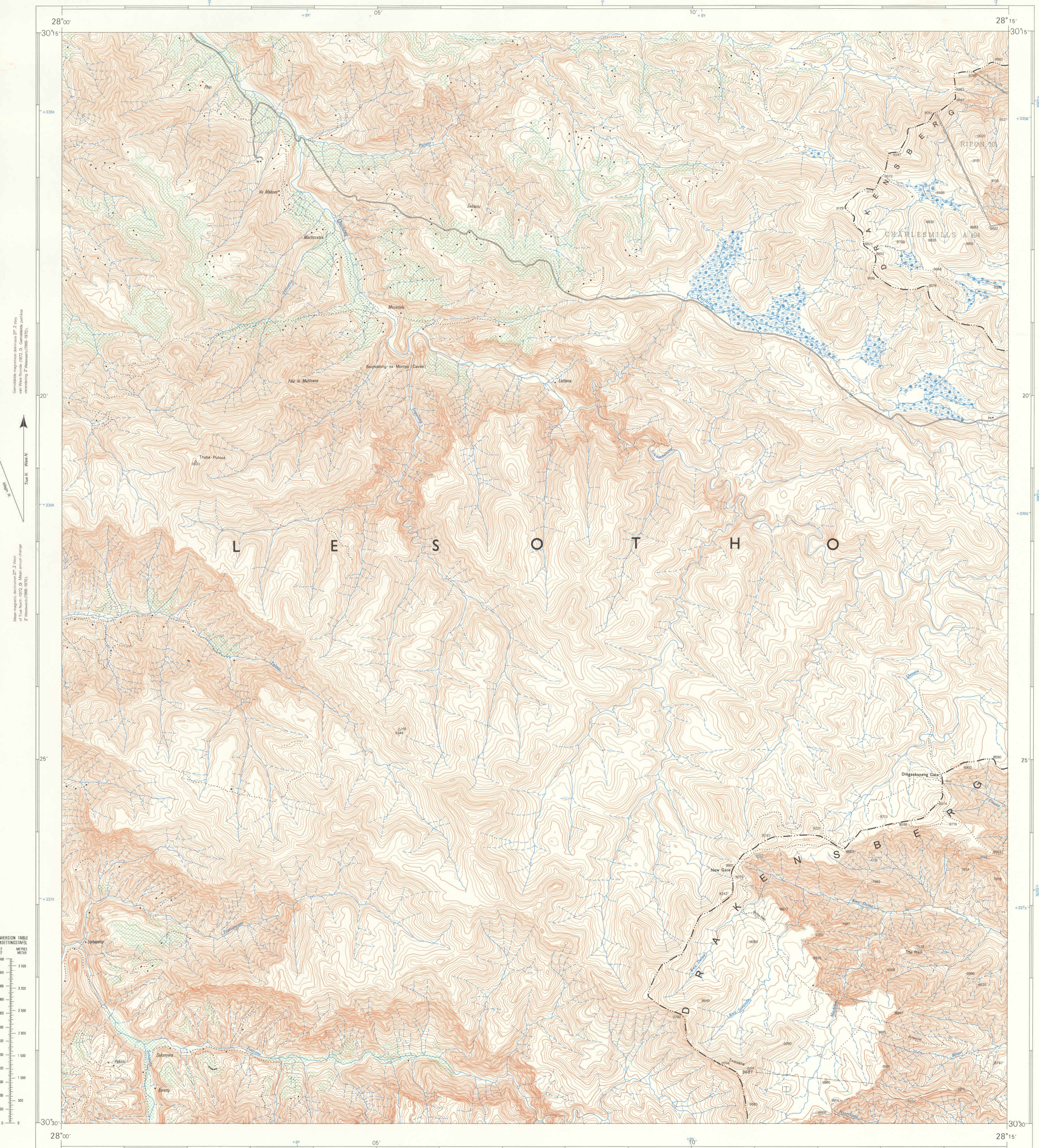


University of Fort Hare  
Together in Excellence

1:50 000 SOUTH AFRICA  
SUID-AFRIKA

3028 AC DIKGAEBANENG

Refer to this Map as SOUTH AFRICA 1:50 000 Sheet 3028 AC DIKGAEBANENG  
Verwys na hierdie Kaart as SUID-AFRIKA 1:50 000 Vei 3028 AC DIKGAEBANENG  
FIRST EDITION EERSTE UITGAWE



Grondreëlse magnetiese deklinasie 27,2 W. van Wye Noorde (1972, D. Grondreëlse jaarlike verandering 2,2 westwaarts (1966-1971)).  
 Mean magnetic declination 27,2 W. of True North (1972, D. Mean annual change 2,2 westwaarts (1966-1971)).

**CONVERSION TABLE**  
**OMREKENINGSSTAFEL**

Feet	Meters
0	0
500	152,4
1 000	304,8
1 500	457,2
2 000	609,6
2 500	762,0
3 000	914,4
3 500	1 066,8
4 000	1 219,2
4 500	1 371,6
5 000	1 524,0

Air Photography 1966 (Lot No. 665/186). Surveyed in 1931 and drawn in 1973 by the Topographical Survey Office, Lufsigdale 1966 (Taan No. 565/186). Oorgeneem in 1971 en geteken in 1973 deur die Topografiese Kantoor.

T.S.O. 300/5674

CONTOUR INTERVAL 50 ENGLISH FEET

1:50 000

CONTOURTOESNOMMER 50 ENGLSE VOET

Printed and published by the Government Printer, Private Bag X85, Pretoria 1973.  
Gedruk en uitgegee deur die Staatsdrukker, Privaatboks X85, Pretoria 1973.

**REFERENCE VERKLARING**

International Boundaries	Internasionale Grense
Provincial Boundaries	Provinsiale Grense
Multiple Track Railways	Veelvoudige Spoorlyne
Single Track Railways	Enkelspoorlyne
Electrified Railways	Geëlektrifiseerde Spoorlyne
Narrow Gauge Railways	Smalspoorlyne
Service Railways	Diensspoorlyne
Aerial Roads	Hooftverkeerspaaie
Main Roads	Groenpaaie
Secondary Roads	Sekondêre Paaie
Other Roads	Ander Paaie
Tracks and Footpaths	Dowwe Paaie en Voetspaaie
Power Lines	Stroomlyne
Telephone Lines	Telefoonlyne
Post Offices, Police Stations and Posts	Poskantore, Polisiestasies en poste
Stores, Hotels, Schools and Places of Worship	Winkels, Hotelle, Skole en Plaaske van Aanbidding
Lighthouses and Marine Lights	Vuurtoringe en Seewarltligte
Lighthouse Beacons	Seewarltligte
Trig Beacons (Number to right and height below)	Trig Baken (Nommer regs en hoogte onder)

The grid lines of the South African Co-ordinate System are indicated in the margin by short black ticks at 10 000 metre intervals, with co-ordinate values in units of 10 000 metres in blue.

The grid lines of the adjoining grid system are indicated similarly on the outside of the gazetteure dicing.

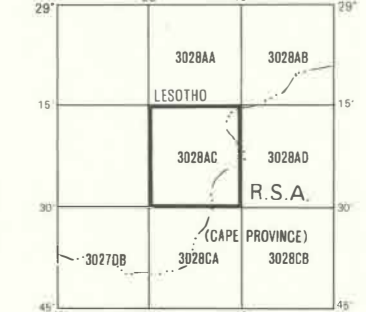
Elevations are in English Feet to ground level. Hoogtes is in Engelse Voet op grondhoogte.

Die ruitlyne van die Suid-Afrikaanse Koordinatstelsel word in die kante van die kaart aangedui deur kort swart strepe, 10 000 metre van mekaar met koördinaatwaardes in eenhede van 10 000 metre in blou.

Die ruitlyne van die aangrensende ruitstelsel word op dieselfde manier aan die buitekant van die kaart aangedui.

Gauss Conform Projection, Central Meridian 29° East, Clarke 1880 Spheroid  
Gauss se Konforme Projeksie, Middelleraans 29° Oos, Clarke 1880 Sferoïed

**INDEX TO SHEETS** **INDIJS VAN VELLE**



**REFERENCE VERKLARING**

Magnetic Stations and Ground Signs	Magnetiese Stasies en Grondtekens
Hills	Heulle
Monuments	Monumente
Dipping Tanks	Dipbakke
Windmills	Windpompe
Walls	Mure
Anti-erosion Walls	Grondbewaringswalle
Excavations	Uitgrawings
Perennial Water	Standhoudende Water
Non-perennial Water	Nie-standhoudende Water
Dry Pans	Droë Panne
Springs, Waterholes and Wells	Fonteinne, Watergate en Putte
Marshes, Swamps and Vies	Moerasse en Viee
Pipelines	Pyplyne
Photo Centres	Fotomiddelstasie
Prominent Rock Outcrops	Prominente Klipbanke
Terraces	Bewerkte Lande
Cultivated Lands	Boorde en Wingerde
Orchards and Vineyards	Bome en Bos
Trees and Bush	

**ACKNOWLEDGEMENT NOTE**  
Topographical detail in Lesotho supplied by Directorate of Overseas Surveys, England, as shown on Basutoiland sheet 3028AC 1964.

**ERKENNINGSNOTA**  
Topografiese detail in Lesotho deur „Directorate of Overseas Surveys, England,” verskaf soos dit op Basutoiland vel 3028AC 1964 voorkom.

COPYRIGHT KOPIEREG

3028 AC DIKGAEBANENG FIRST EDITION EERSTE UITGAWE