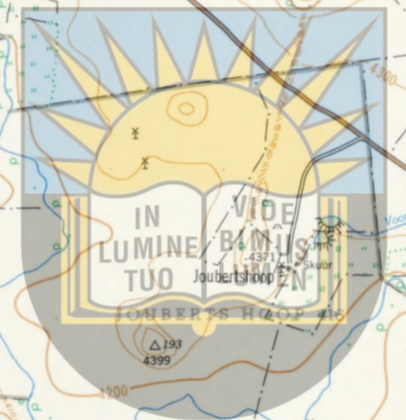
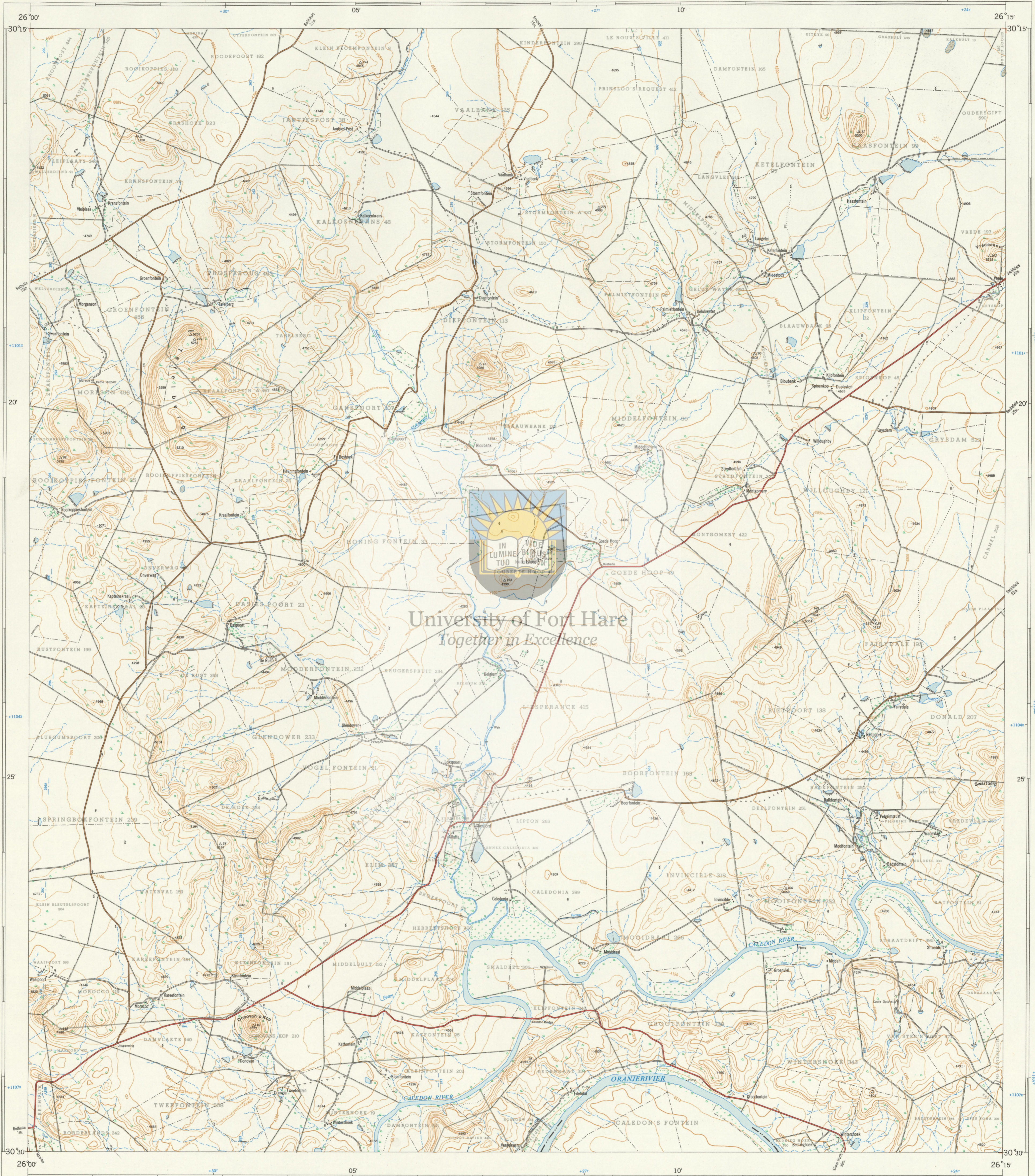




1:50,000 SOUTH AFRICA SUID-AFRIKA

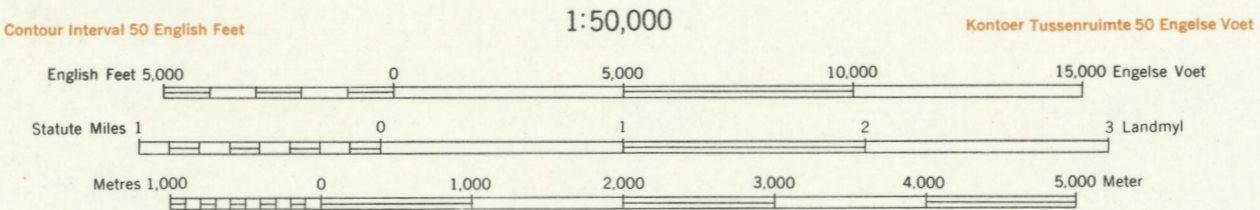
3026AC DUPELSTON

Refer to this Map as SOUTH AFRICA 1:50,000 Sheet 3026AC DUPELSTON



University of Fort Hare Together in Excellence

Air Photography 1951. Surveyed in 1954 and drawn in 1965 by the Trigonometer Survey Office.



Printed and Published in the Republic of South Africa by the Government Printer, Pretoria, 1965.

REFERENCE VERKLARING table with symbols for boundaries, railways, roads, and other features.

The grid lines of the South African Co-ordinate System are indicated in the margin by short black lines at 20,000 English Feet intervals...

All heights are given in English Feet to ground level. Alle hoogtes word in Engelse Voet tot op grondhoogte aangegeef.

INDEX TO SHEETS INDEKS VAN VELLE grid showing surrounding map sheets.

REFERENCE VERKLARING table with symbols for magnetic stations, huts, monuments, and other landmarks.