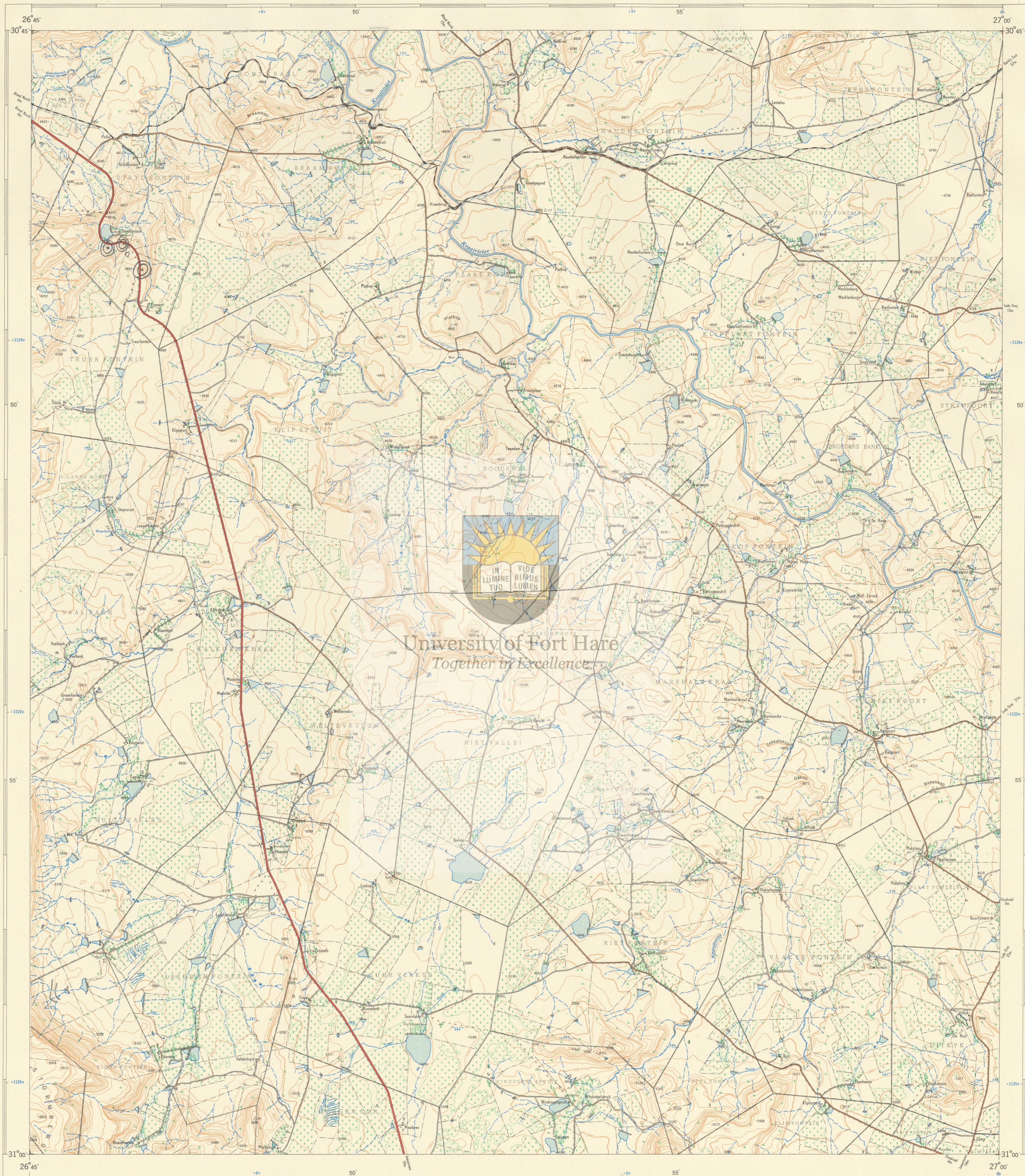




1:50,000 SUID-AFRIKA SOUTH AFRICA

3026DD VINEYARD

Verwys na hierdie Kaart as SUID-AFRIKA 1:50,000 Vel 3026DD VINEYARD Refer to this Map as SOUTH AFRICA 1:50,000 Sheet EERSTE UITGAWE FIRST EDITION



University of Fort Hare Together in Excellence

Magnetiese buidings (1950) in omtrent
vanaf 1:27,000 West of True North.
Annual change 3" Westwards.

Magnetiese buidings (1950) in omtrent
vanaf 1:27,000 West of True North.
Jaarlike verandering 3" Westwaarts.

VERTIKALE
SKALF
TABLE
METER
METRES

Lugfoto's 1949. Orgaanet in 1956 en geteken in 1959 deur die Driehoeksmetingkantoor.
Air Photography 1949. Surveyed in 1956 and drawn in 1959 by the Trigonometrical Survey Office.

Hoogte lyn Tussenruimte 50 Engelse Voet

1:50,000

Contour Interval 50 English Feet

Gedruk en Uitgegeen in die Unie van Suid-Afrika deur die Staatsdrukker, Pretoria 1959.
Printed and Published in the Union of South Africa by the Government Printer, Pretoria, 1959.

VERKLARING REFERENCE

Internasionale Grense	International Boundaries
Provisoriale Grense	Provincial Boundaries
Veelvoudige Spoorlyne	Multiple Track Railways
Enkelspoorlyne	Single Track Railways
Gelektreïseerde Spoorlyne	Electrified Railways
Smalspoorlyne	Narrow Gauge Railways
Sukkerriet- en Minerale Spoorlyne	Cane and Mineral Tracks
Nasionale Paale	National Roads
Hooppaale	Main Roads
Sekondêre Paale	Secondary Roads
Ander Paale	Other Roads
Downe Paale en Voetpaale	Tracks and Footpaths
Kraglyne	Power Lines
Telefoon- en Telegraaflyne	Telephone and Telegraph Lines
Pos- en Telegraafkantore, Polisie-stasies en poste, Winkels, Hotelle, Skole en Plekke van Aandbidding	Post and Telegraph Offices, Police Stations and Posts, Stores, Hotels, Schools and Places of Worship
Vuurtoerings en Sewaartligte	Lighthouses and Marine Lights
Sewaartbakke	Marine Beacons
Driehoeksbakke (Nommer regs en hoogte onder)	Trig. Beacons (number to right and height below)

Die rolyne van die Suid-Afrikaanse Koordinaatstelsel word in die kantlynne
aangegee deur kort naart toe 20,000 Engelse Voet en met
kordinaatwaardes in eenhede van 10,000 Engelse Voet in blou.

Alle hoogtes word in Engelse Voet tot op grondhoeë aangegee.
All heights are given in English Feet to ground level.
Gauss in Konforme Projeksie. Middellandse 27° Oos.
Gauss Conform Projection. Central Meridian 27° East.

The grid lines of the South African Co-ordinate System are indicated in the
margin by short black lines at 30,000 English Feet intervals with co-ordinate
values in units of 10,000 English Feet in blue.

INDEKS VAN VELLE INDEX TO SHEETS

3026 DA	3026 DB	3027 CA
3026 DC	3026 DD	3027 CC
3126 BA	3126 BB	3127 MA

Cadastral information supplied by the Surveyor-General, Cape.
Original Farms.....

VERKLARING REFERENCE

Magnetiese Stasies en Grondtekens	Magnetic Stations and Ground Signs
Naturelthutte	Native Huts
Vee- en Vendusidraale	Cattle Kraals and Stock Pens
Dipbakke	Dipping Tanks
Windpompe	Windmills
Klipmure	Stone Walls
Groenbewaringswalle	Anti-erosion Walls
Uitgrawings	Excavations
Standhouende Water	Perennial Water
Nie-standhouende Water	Non-perennial Water
Droë Panne	Dry Pans
Fonteinne, Watergate en Putte	Fountains, Springs, Waterholes and Wells
Moorasse en Vieë	Marshes, Swamps and Vies
Pypjone	Pipelines
Fotomiddelplaatjies	Photo Centres
Uitstaande Klipbanke	Prominent Rock Outcrops
Terasse	Terraces
Bewerkte Lande	Cultivated Lands
Boorde en Wingerde	Orchards and Vineyards
Lane, Windskerms en Heininge	Avenues, Windbreaks and Hedges

PRYS PER VEL 6/- PRICE PER SHEET
KOPIEREG COPYRIGHT

3026DD VINEYARD EERSTE UITGAWE FIRST EDITION