

UNIVERSITY OF FORT HARE

XHS211E/XHS211

DEGREE EXAMINATIONS JUNE 2017

.....
Ixesha: 3 HOURS

Isifundo: Linguistics

Amanqaku: 100

This paper consists of 9 pages including cover page

Internal Examiners

Dr N.Z.Gxekwa

Ms N.Kapa

Mrs M. Ganiso

Imiyalelo/ Instructions

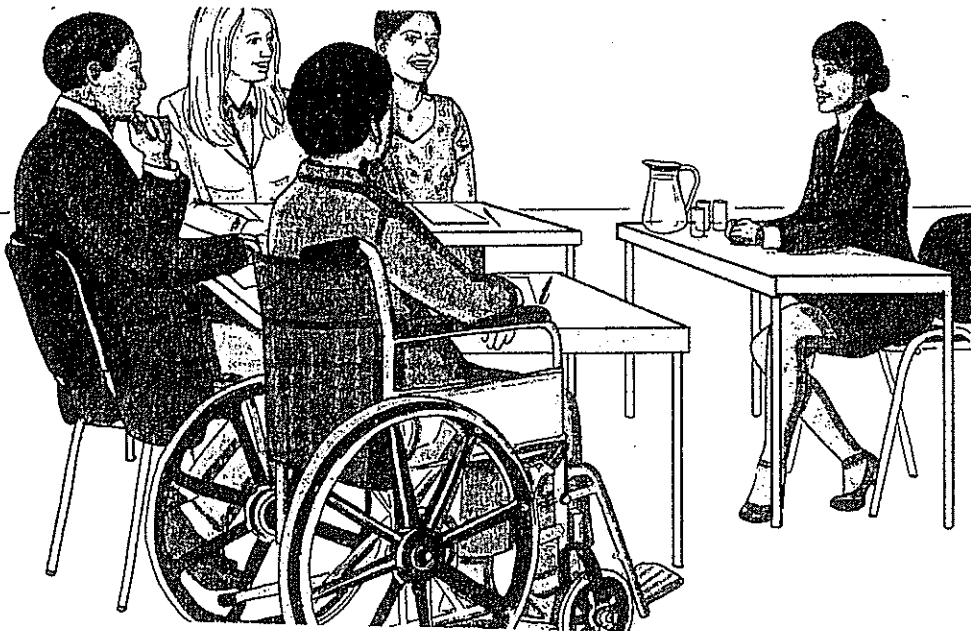
Phendula OMNYE kwicandelo ngalinye. MINE imibuzo ekufuneka uyiphendule

ICANDELO A: IFONETIKI NEFOLOJI

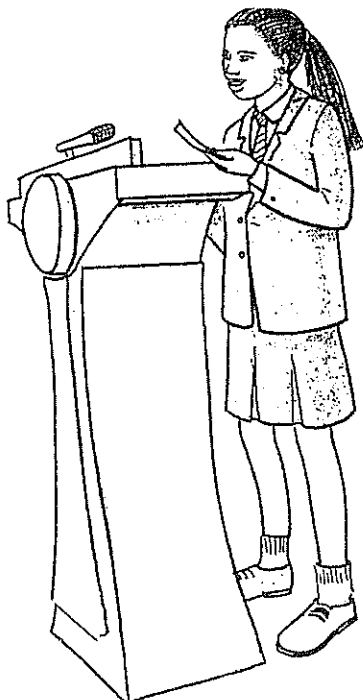
Umbuzo 1

1.1 Jonga kwimifanekiso oyinikiweyo uxele udidi ngalunye lwefonetiki olusetyenziswayo . Xhasa impendulo yakho .

Umfanekiso 1



Umfanekiso 2



Umfanekiso 3



(6)

- 1.2 Nika izandi zibe mbini ngokwefonetiki ezibonisa unxulumano lomthombo wesandi olungcangcazelo lwemiphimbo nalowo wethabhulanti . (02)
- 1.3 Yintoni le yaziwa ngokuba ngumlinganiselo weliza .? (02)
- 1.4 Chaza iyantlukwano kwizidubuleli ngaphandle zesiXhosa nesiZulu (06)
- 1.5 Yenza imatriksi yezikhamiso zesiXhosa nesiZulu . (04)
- 1.6 Imithombo yesandi mithathu ,yixele . (03)
- 1.7 KwisiZulu kukho isidubuli –sifutho secala samakhuhlangubo esinxulumana neso sesiXhosa . Sixele . (02)

(25)

OKANYE

IFONETIKI NEFONOLOJI

Umbuzo 2

1.1 Luyintoni utolo kumgaqo wefonoloji?

(2)

1.2 Nika izandi zibe **mbini** ngokwefonetiki ezibonisa unxulumano lomthombo wesandi olungcangcazelo lwemiphimbo nalowo wethebhulanti.

(2)

1.3 Unxulumene njani umjikelo nee-amplityhudi?

(2)

1.4 Nika isizathu esibangela ukuba kuthiwe izikhamiso kwisiXhosa nesiZulu

zi- [+ bulungu]?

(2)

1.5 Nika izizathu **ezibini** ezibangela ukuba kuthiwe kwindlela yesandi yesiXhosa kunye neyesiZulu, oosingankamiso basebenza njengamaqabane.

(4)

1.6 Yintoni le yaziwa ngokuba ngumlinganiselo weliza?

(2)

1.7 Nika izandi zibe **ntathu** ngokwefonetiki, ezifunyanwa kwisiXhosa kuphela ezingafunyanwayo kwisiZulu.

(3)

1.8 Yenza **imatriksi** yezikhamiso zesiXhosa nesiZulu.

(4)

1.9 Nika imigaqo yefonoloji ibe **mibini**.

(2)

1.10 Ngowuphi umlinganiselo onguwona ungqamene ngokuthe ngqo nemvakalo-sandi eyandileyo?

(2)

(25)

OKANYE

Umbuzo 3

Chaza indlela iimo-maza ezibumbeka ngayo.

(25)

ICANDELO B: ISINTAKSI

Umbuzo 4

Yakha isivakalisi ze usifake emthini obonisa isakhiwo sesivakalisi. Wakugqiba ubethe koomofu ngokwenzekileyo xa usifaka emthini isivakalisi.

(5)

Umbuzo 5

UDoke kwithiyori yakhe uyatsho ukuba lubalulekile ulwazi lwamacandelo ohlukileyo olwimi ekwakhweni kwesivakalisi. Chonga icandelo le Fonoloji ze ubonakalise ulwazi lwayo ekuguqulweni kwezivakalisi. Yakha izivakalisi eziNTLANU uze uziguqule kubekho inguqulelo ethile kwigama elithile kwisivakalisi ngasinye.

(20)

(25)

OKANYE

Umbuzo 6

Cacisa eli gama lithi “imo-zivakalisi.” (2)

Yintoni umsebenzi wooguqula kwisivakalisi? (4)

Zoba imo-mthi yesi sivakalisi silandelayo:

Zonke ezi zinja zileqa inyamakazi le. (10)

Ngokwethiyori ye-T.G., ungaluchaza ulwimi uthini? (2)

Yintoni ibinzana? (2)

Zoba imvelaphi yesi sivakalisi:

Abazali babathethelele abantwana. (5)

(25)

OKANYE

Umbuzo 7

Xhentsa uzomnbelela ucacisa onke amanqaku okuveliswa kwezivakalisi engqondweni yomthethi ngokwethiyori ye-T.G.

(25)

ICANDELO C

ISEMANTIKI

Umbuzo 8

Yintoni iSemantiki? (2)

Yintoni umehluko phakathi kwesaci neqhaloi? (4)

Nika intsingiselo yezi zaci zilandelayo:

Ukuza kuka Nxele (2)

- b) Ukubambisa iliwa (2)
- c) Ukuthetha uNongqawuse (2)
- d) Unyawo lwemfene (2)
- e) Yangena intaka endlwini (2)

Nika intsingiselo yala magama alandelayo:

- a) inombe (2)
- b) ityhagi (2)
- c) inteleko (2)
- d) imvotho (2)

Nika umzekelo ubemnye wegama elakhiwe ngokulinganisa isandi (1)

(25)

OKANYE

Umbuzo 9

Nika iintsingiselo zoku kulandelayo:

(a) Ilanga alitshoni lingaphumi.
(2)

(b) Umlomo awubekwa siziba.
(2)

(c) Ukuba ngamaphuthi ahlathinye.
(2)

(d) Ukuhanjelwa ngumzimba. (2)

(e) Ukubeka inqawa.
(2)

Nika imizekelo ibe **mine** yamagama awalatha umsebenzi wento. (4)

Nika imizekelo ibe **mithathu** yamagama akhiwe ngokulinganisa isandi esenziwa yinto ethile.

(6)

Nika umahluko phakathi kwesaci neqhalo. (4)

Yintoni inteleko? (1)

(25)

OKANYE

Umbuzo 10

Tyatyadula ngeendidi zezafobe zesiXhosa, unike nemizekelo.

(25)

ICANDELO D

IMOFOLOJI

Umbuzo 11

Xoxa kuvokotheke malunga nemigaqo yokwakha amagama apha esiXhoseni. Xhasa iphendulo ngokuthi unike imizekelo kangangoko ukubonisa ulwazi lwakho ngolwakhiwo lwamagama.

OKANYE

(25)

Umbuzo 12

Nika iindidi zezichazi esiXhoseni (6)

Yintoni isichazi? (4)

Hlahlela apha, unike ihlelo isimaphambili nesiqu:

ubumnandi, amakhwenkwe, isehlo, unyaka

(12)

Khawuchaze ukuba yintoni umahluko phakathi kwesimnini ncam nesochazo

(3)

(25)

OKANYE

Umbuzo 13

Chaza konke ngezichazi unike nemizekelo kangangoko.

(25)